

# District Profile

## USD 365 Garnett

---

### Table of Contents:

#### Census Demographics:

County Profile Information  
Census Data - Geographic Comparison City, District, County, and State

#### School District Demographics:

Enrollment Trends by Type, Race, and Lunch Status  
Student-Teacher Ratio / Dropouts  
Trends in Attendance Rates  
Trends in Graduation Cohort Groups

#### College and Career Readiness - Assessments and Achievement:

ACT Scores  
Postsecondary Progress  
District Reading Scores by Proficiency Level, Subgroup, and Grade  
District Math Scores by Proficiency Level, Subgroup, and Grade

#### District Comparisons:

US Census / American Community Survey Data  
KSDE Data

### Data Provided by:



# County Profile Information

## Anderson County, Kansas

According to figures provided in the Kansas Statistical Abstract, the population of Anderson county was approximately 7827 in 2016. This represents a -3.39% change or net migration since the 2010 United States Census. With a total number of 579.6 square miles in the county, the population density for the county is 13.5 people per square mile. This places the county in the KDHE population peer group of a Rural area. According to projections reported in the Kansas Statistical Abstract, the percentage change in total population through the year 2040 is estimated at -10.55 for the county.

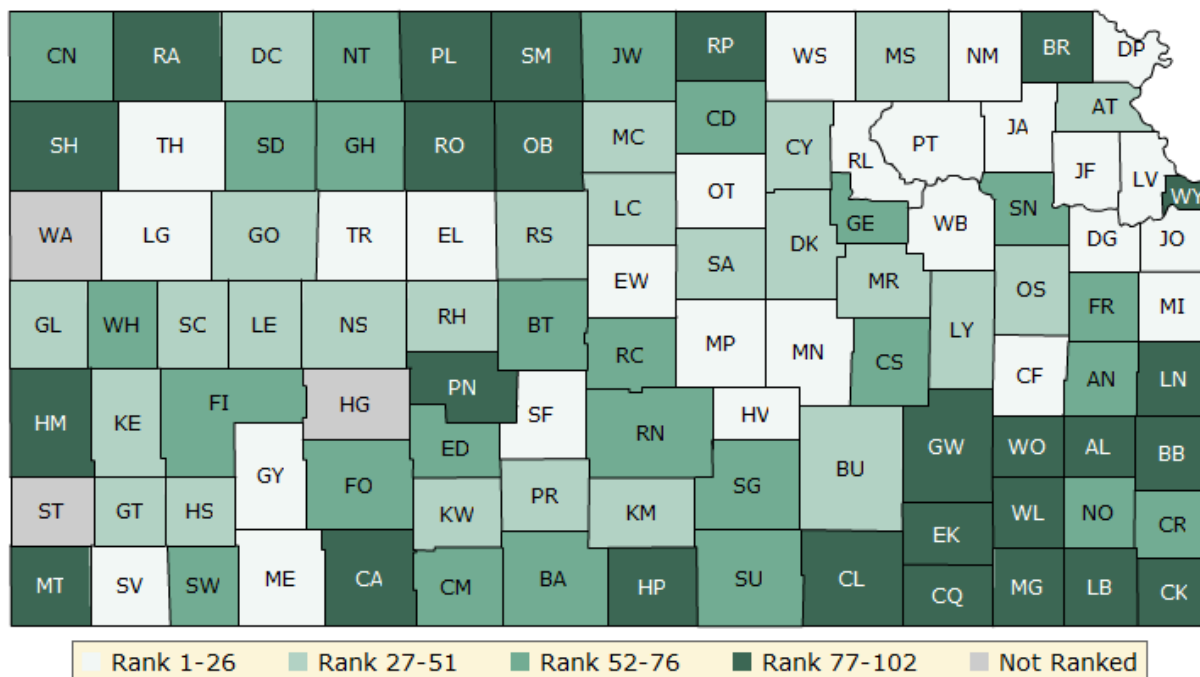
## County Health Rankings:

The County Health Rankings (provided by the Robert Wood Johnson Foundation) measure the health of nearly all counties in the nation and rank them within states. The Rankings are compiled using county-level measures from a variety of national and state data sources with 1 being the best.

The overall rankings in health factors represent what influences the health of a county. They are an estimate of the future health of counties as compared to other counties within a state. The ranks are based on four types of measures: health behaviors, clinical care, social and economic, and physical environment factors.

Details regarding this data can be found at: <http://www.countyhealthrankings.org/#app/>

### Anderson County Health Factor Ranking 2017: 52 / 102



# US Census: County / District Comparison

US Census: American Community Survey  
5-Year Data 2016

Garnett

District  
365

ANDERSON  
County

Kansas

## FAMILY INCOME:

Median Family Income	\$47,105	\$42,172	\$58,750	\$68,231
Mean Family Income	\$54,426	\$52,564	\$62,669	\$86,732
Percent of families with children in poverty	60.8	25.2	11	15.4
Percent of households with Public Asst income	2.1	2.2	2.2	1.9
Percent of households with Food Stamp benefits	13.9	9.8	9.2	9.1

## EDUCATIONAL ATTAINMENT: Population over 25 years old - percent

Less than 9th grade	1.4	4.2	3.7	3.8
9th to 12th grade - No Diploma	5.3	4.8	5.5	5.9
Total with No High School Diploma / GED	6.7	9	9.2	9.7
High School Diploma or Equivalency	34.6	36.5	37	26.6
Bachelor's Degree or More	9.4	11	10.2	31.6

## HOUSEHOLD COMPOSITION:

Percent of households that are families	56.5	64.7	66.2	65.4
Average family size	2.91	2.99	3.02	3.12
Married couple families (children under 18)	16.3	19.4	18.7	20.8
Single parent household- female only	9	6.5	6.3	6.3
Single parent household- male only	0.7	0.7	2.3	2.5

## HOUSING DATA:

Year housing built - median age / years	56	49	50	44
Median value of owner-occupied homes	\$83,200	\$99,200	\$91,200	\$135,300
Vacancy rate of all housing units	11.7	12.2	10.7	10.7

## UNEMPLOYMENT DATA:

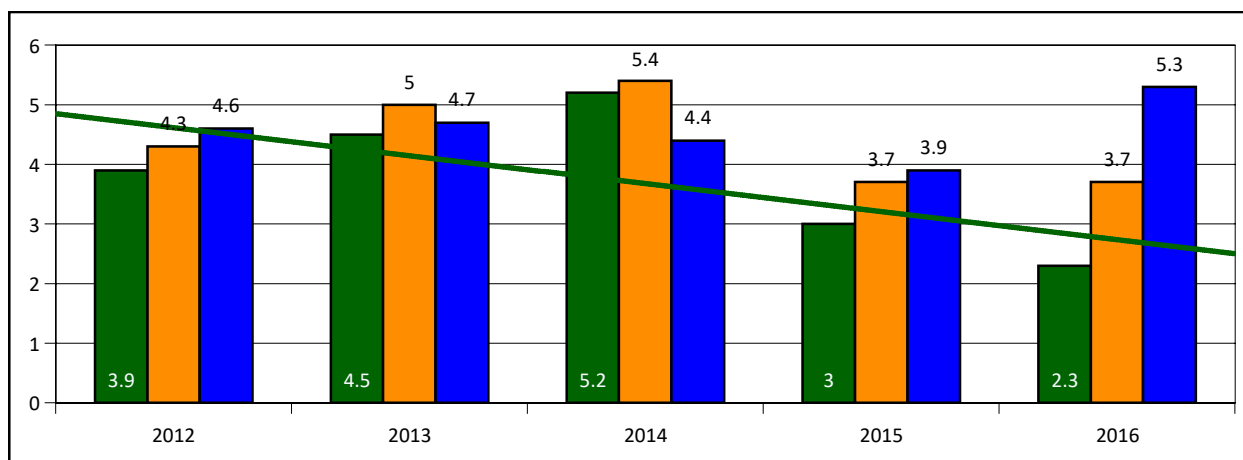
District Rate



County Rate



State Rate



\*Source: American Community Survey 5-Year Estimates

EMPLOYMENT STATUS - % Population over 16 who are in the civilian labor force and not employed

# US Census: County / District Comparison

US Census: American Community Survey  
5-Year Data 2016

Greeley

District  
365

ANDERSON  
County

Kansas

## FAMILY INCOME:

Median Family Income	\$49,167	\$42,172	\$58,750	\$68,231
Mean Family Income	\$53,880	\$52,564	\$62,669	\$86,732
Percent of families with children in poverty	0	25.2	11	15.4
Percent of households with Public Asst income	0	2.2	2.2	1.9
Percent of households with Food Stamp benefits	8.7	9.8	9.2	9.1

## EDUCATIONAL ATTAINMENT: Population over 25 years old - percent

Less than 9th grade	0.5	4.2	3.7	3.8
9th to 12th grade - No Diploma	4.8	4.8	5.5	5.9
Total with No High School Diploma / GED	5.3	9	9.2	9.7
High School Diploma or Equivalency	53.4	36.5	37	26.6
Bachelor's Degree or More	4.8	11	10.2	31.6

## HOUSEHOLD COMPOSITION:

Percent of households that are families	58.3	64.7	66.2	65.4
Average family size	2.99	2.99	3.02	3.12
Married couple families (children under 18)	12.6	19.4	18.7	20.8
Single parent household- female only	7.1	6.5	6.3	6.3
Single parent household- male only	3.9	0.7	2.3	2.5

## HOUSING DATA:

Year housing built - median age / years	77	49	50	44
Median value of owner-occupied homes	\$61,800	\$99,200	\$91,200	\$135,300
Vacancy rate of all housing units	17	12.2	10.7	10.7

## UNEMPLOYMENT DATA:

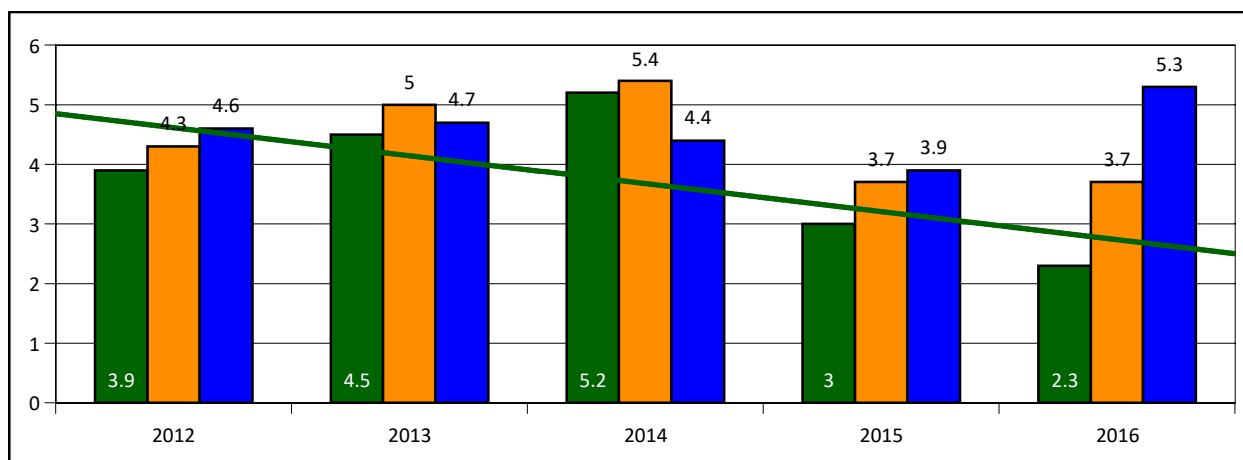
District Rate



County Rate



State Rate



\*Source: American Community Survey 5-Year Estimates

EMPLOYMENT STATUS - % Population over 16 who are in the civilian labor force and not employed

# US Census: County / District Comparison

US Census: American Community Survey  
5-Year Data 2016

Westphalia      District 365      ANDERSON County      Kansas

## FAMILY INCOME:

Median Family Income	\$38,250	\$42,172	\$58,750	\$68,231
Mean Family Income	\$45,293	\$52,564	\$62,669	\$86,732
Percent of families with children in poverty	0	25.2	11	15.4
Percent of households with Public Asst income	2.5	2.2	2.2	1.9
Percent of households with Food Stamp benefits	13.6	9.8	9.2	9.1

## EDUCATIONAL ATTAINMENT: Population over 25 years old - percent

Less than 9th grade	12.7	4.2	3.7	3.8
9th to 12th grade - No Diploma	3.5	4.8	5.5	5.9
Total with No High School Diploma / GED	16.2	9	9.2	9.7
High School Diploma or Equivalency	46.5	36.5	37	26.6
Bachelor's Degree or More	7	11	10.2	31.6

## HOUSEHOLD COMPOSITION:

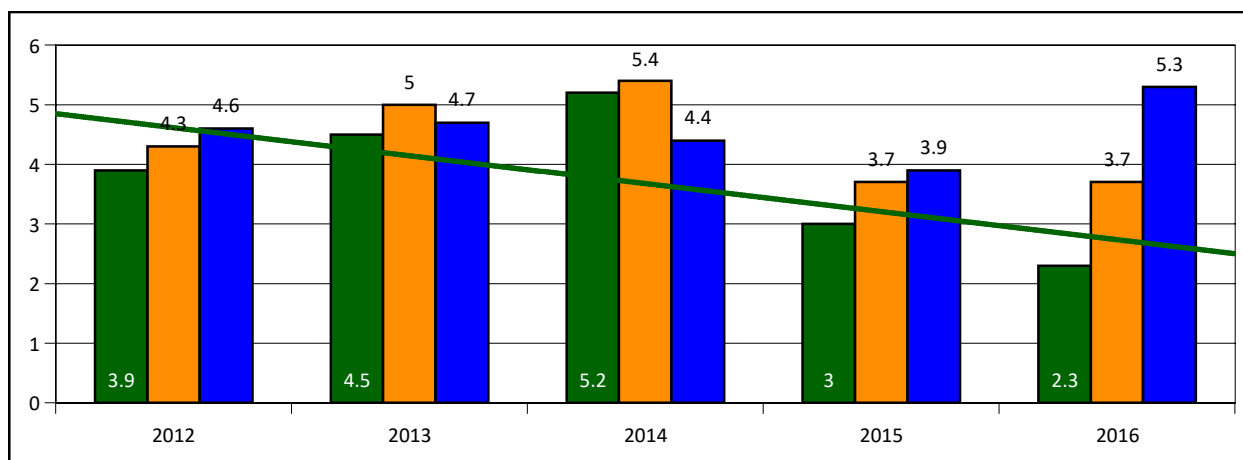
Percent of households that are families	82.7	64.7	66.2	65.4
Average family size	2.82	2.99	3.02	3.12
Married couple families (children under 18)	24.7	19.4	18.7	20.8
Single parent household- female only	19.8	6.5	6.3	6.3
Single parent household- male only	4.9	0.7	2.3	2.5

## HOUSING DATA:

Year housing built - median age / years	77	49	50	44
Median value of owner-occupied homes	\$45,800	\$99,200	\$91,200	\$135,300
Vacancy rate of all housing units	10	12.2	10.7	10.7

## UNEMPLOYMENT DATA:

District Rate      County Rate      State Rate

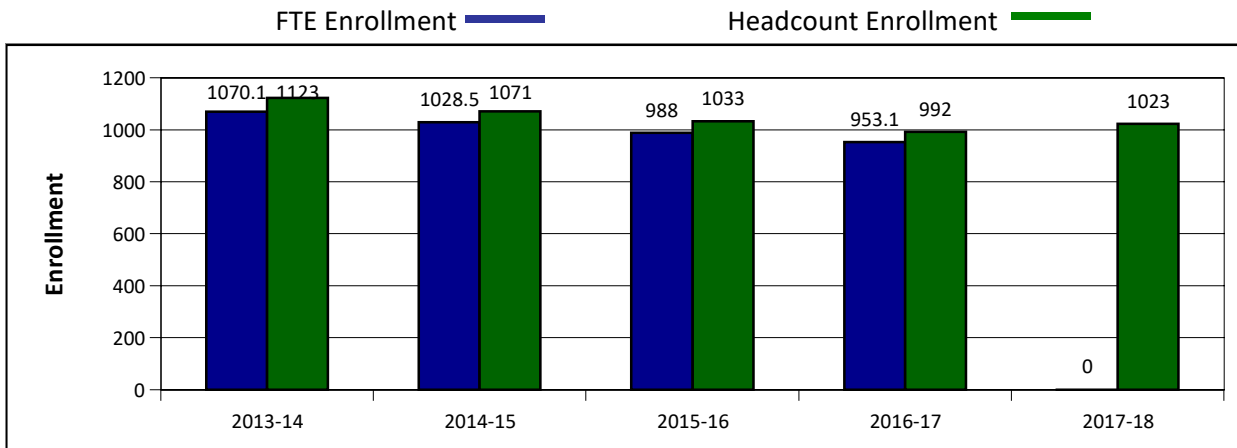


\*Source: American Community Survey 5-Year Estimates

EMPLOYMENT STATUS - % Population over 16 who are in the civilian labor force and not employed

# District Demographics

## DISTRICT ENROLLMENT TRENDS:

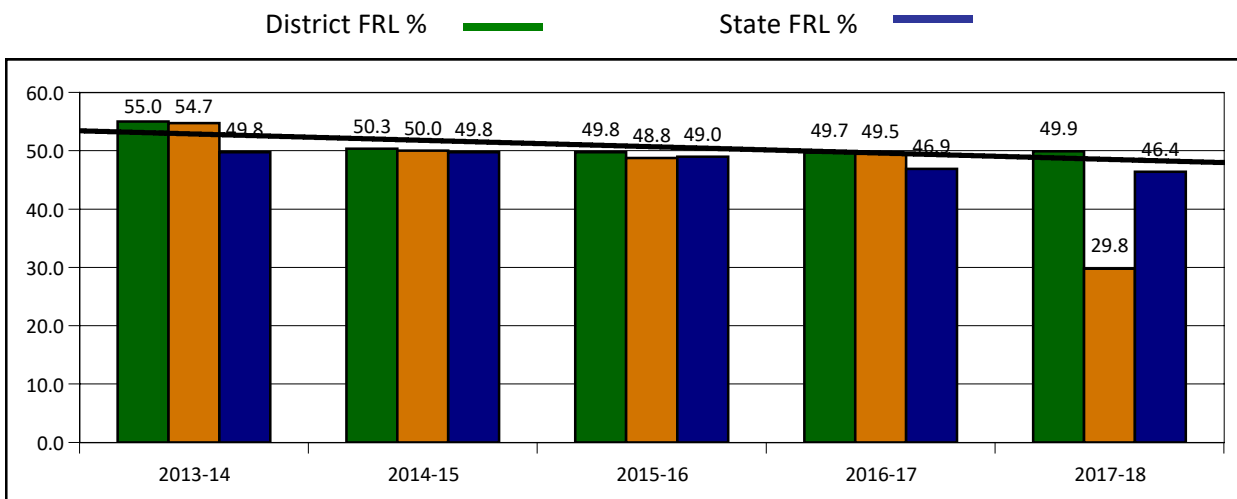


\*SOURCE: KSDE Comparative Performance Fiscal System

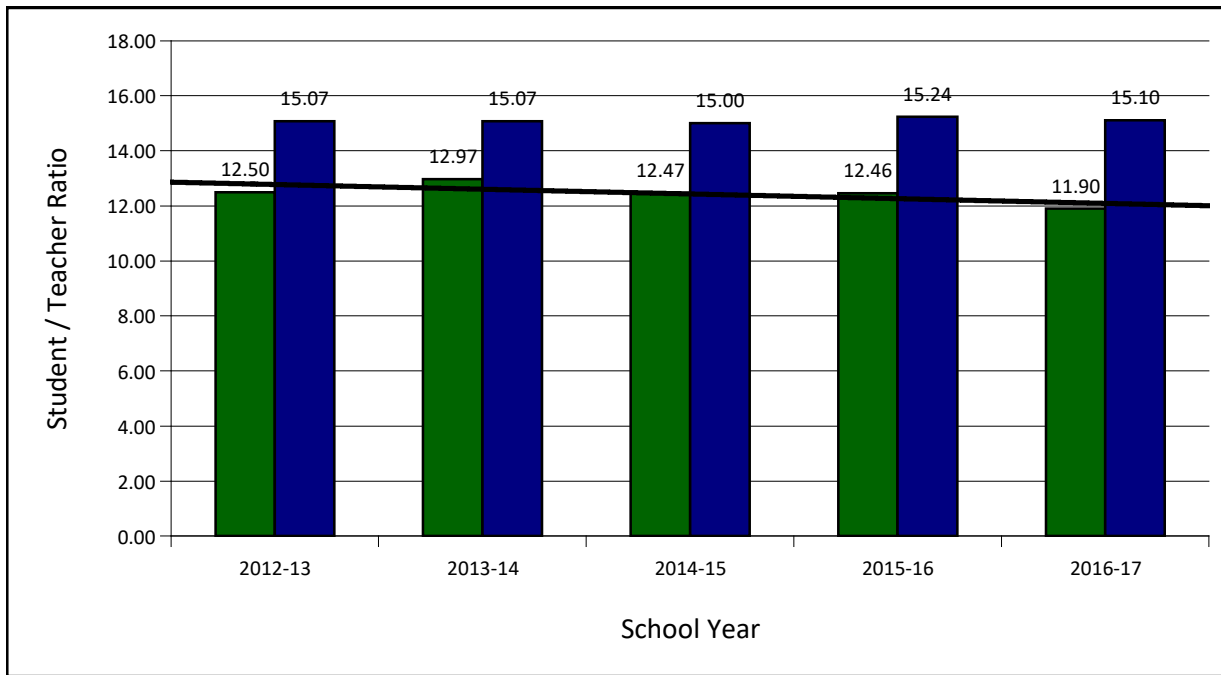
## COMPARATIVE HISTORY ENROLLMENT DEMOGRAPHICS:

YEAR	WHITE	AFRICAN-AMERICAN	HISPANIC	OTHER	STUDENTS WITH DISABILITIES	ELL
2012-13	93.90%	0.90%	2.30%	2.80%	15.14%	0.00%
2013-14	94.30%	1.00%	2.30%	2.40%	17.19%	0.28%
2014-15	92.80%	0.20%	2.50%	4.50%	16.53%	0.00%
2015-16	91.70%	0.10%	3.40%	4.80%	16.07%	0.00%
2016-17	94.20%	0.30%	2.50%	3.00%	17.14%	0.00%
<b>KS 2016-17</b>	<b>65.00%</b>	<b>7.00%</b>	<b>20.00%</b>	<b>9.00%</b>	<b>14.42%</b>	<b>11.70%</b>

## COMPARATIVE HISTORY FREE REDUCED LUNCH ELIGIBILITY:



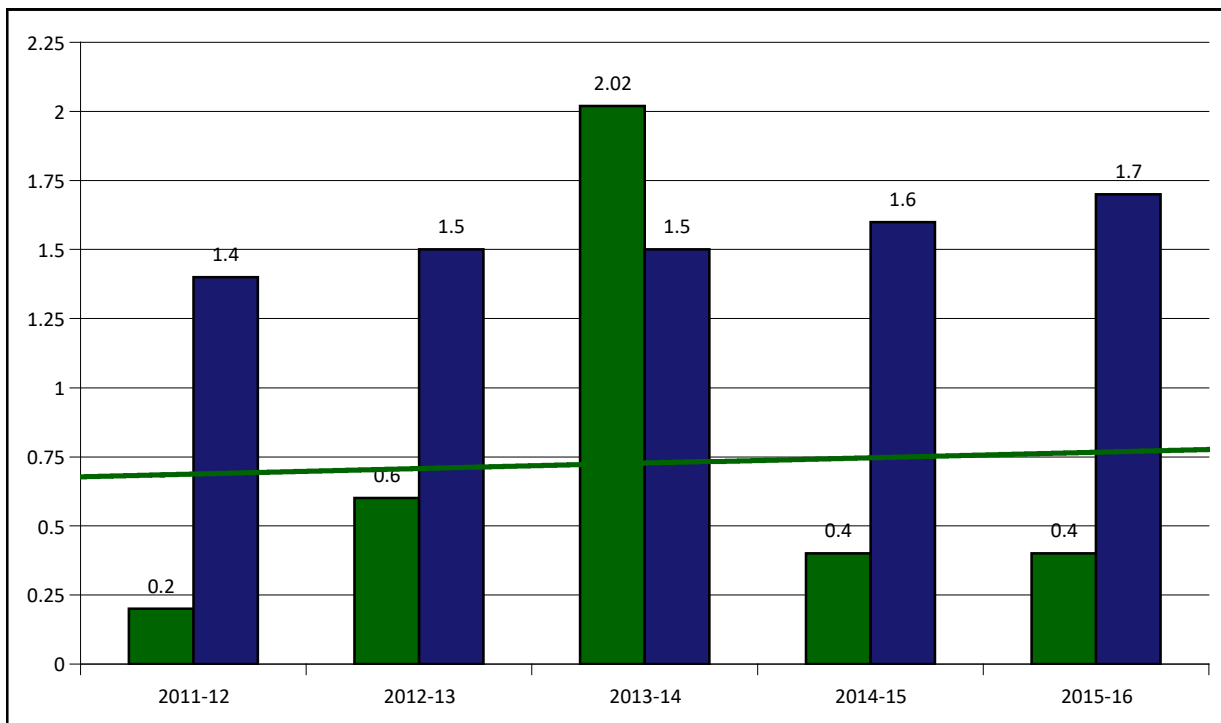
**STUDENT / TEACHER RATIO:**



\*SOURCE: KSDE School Finance Publications - Selected School Stats

District Data █ State Data █

**DROPOUT RATES (ALL STUDENTS):**

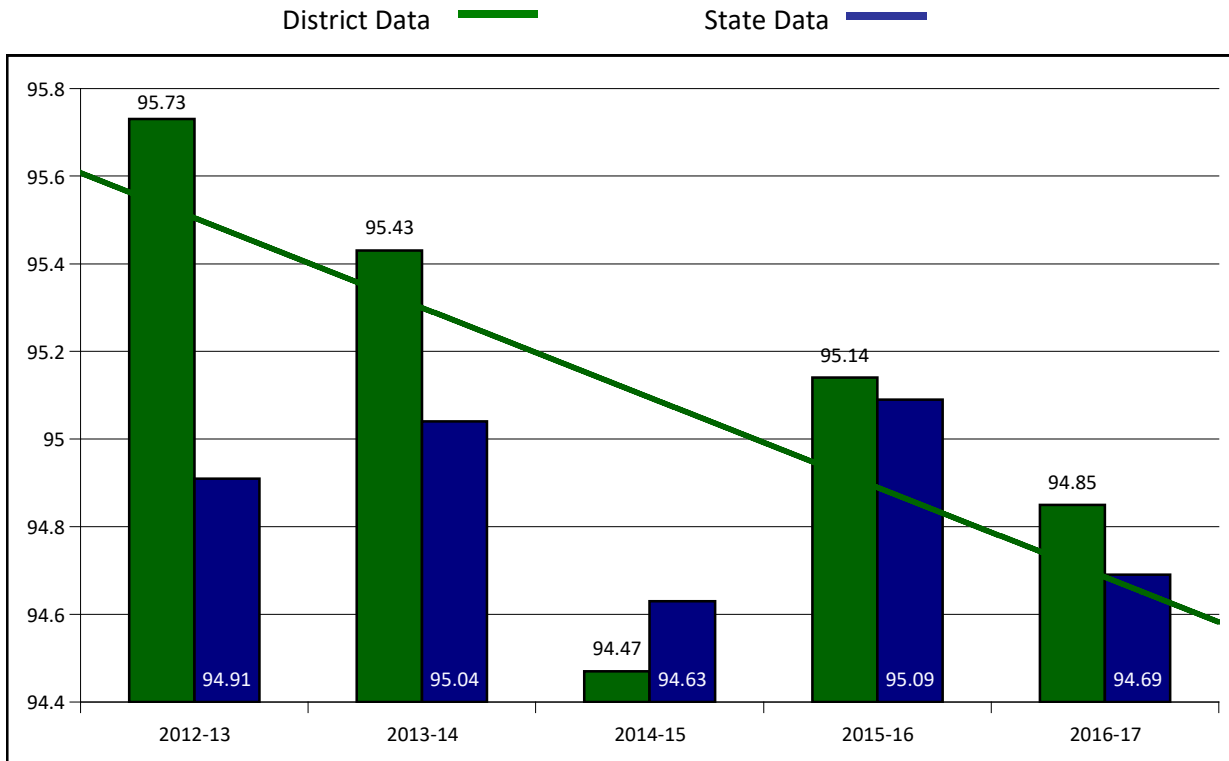


\*SOURCE: KSDE K-12 School Reports - Dropouts by Grade, Race, and Gender

## ATTENDANCE

Attendance rate in the following chart includes both Kindergarten and Grades 1-12 Average Daily Attendance. Rates have been suppressed if either group has average daily membership of between one and nine students due to FERPA regulations.

### K-12 ATTENDANCE RATES (ALL STUDENTS):



\*SOURCE: KSDE K-12 School Reports

### ATTENDANCE RATES BY DISAGGREGATED GROUP:

Subgroup rates calculated as follows:

$$\frac{\text{Grades 1-12 Avg Daily Attendance (MALE)} + \text{Grades 1-12 Avg Daily Attendance (FEMALE)}}{\text{Grades 1-12 Avg Daily Membership (MALE)} + \text{Grades 1-12 Avg Daily Membership (FEMALE)}}$$

YEAR	MALE	FEMALE	FRL	SpEd	WHITE	BLACK	HISPANIC	MULTI-RACE	NATIVE AMERICAN
2011-12	95.1%	95.3%	94.1%	93.9%	95.2%	96.1%	93.9%	96.7%	96.0%
2012-13	95.9%	95.5%	94.7%	95.3%	95.8%	95.7%	94.5%	97.2%	93.9%
2013-14	95.8%	95.2%	94.5%	94.8%	95.6%	95.1%	95.6%		93.5%
2014-15	94.7%	94.2%	93.4%	92.0%	94.5%		94.1%		
2015-16	95.2%	94.9%	94.2%	95.1%	95.2%		94.1%		

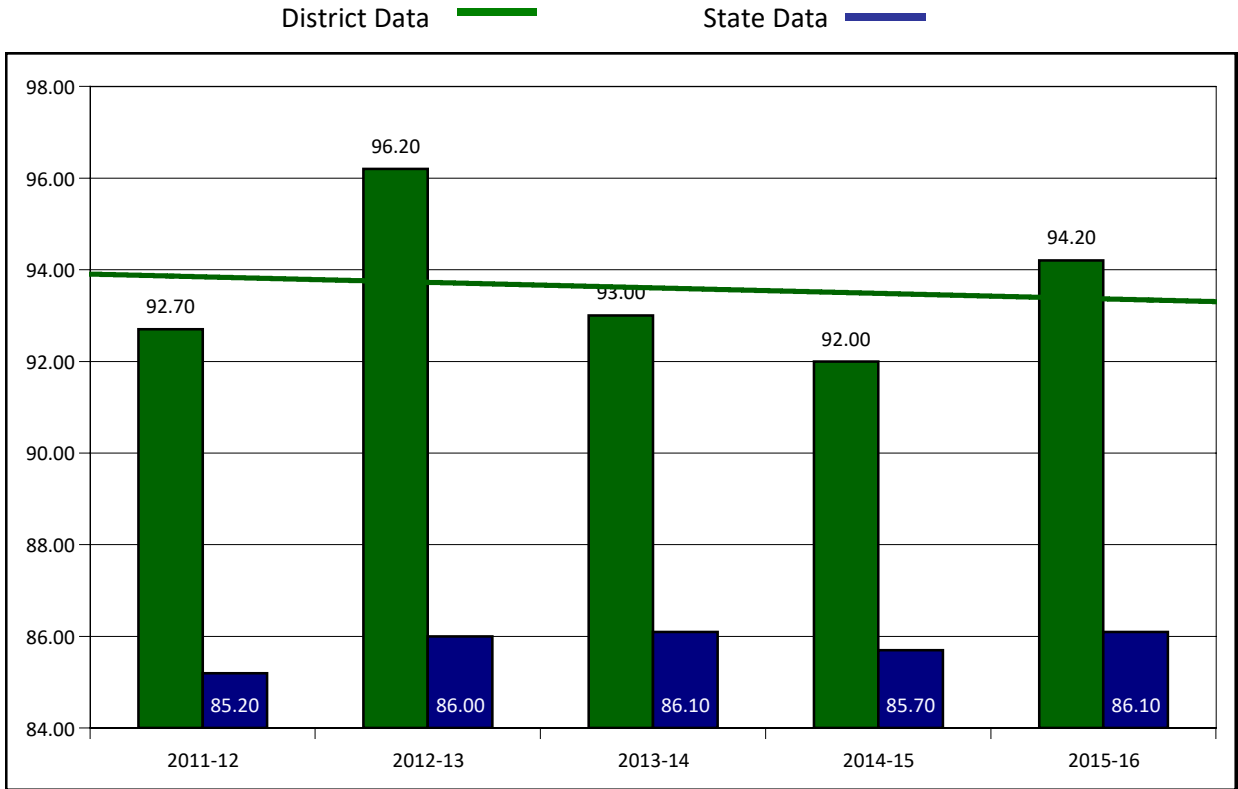
\*Blanks indicate data suppression for <10 students for gender in subgroup



**GRADUATION RATES BY COHORT**

Graduation data prior to 2008-2009 used the National Center for Education Statistics (NCES) formula. 2008-2009 graduation data used the No Child Left Behind (NCLB) formula. 2009-2010 graduation data and beyond will use the Four-Year Adjusted Cohort formulas. As a result, it is imperative that no comparisons be made between graduation data from 2009 and earlier and graduation data from 2010 and beyond.

**4-YEAR COHORT GRADUATION RATES (ALL STUDENTS):**



\*SOURCE: KSDE Kansans CAN Building Report Card: Graduation Indicators - 4 Year By Subgroup

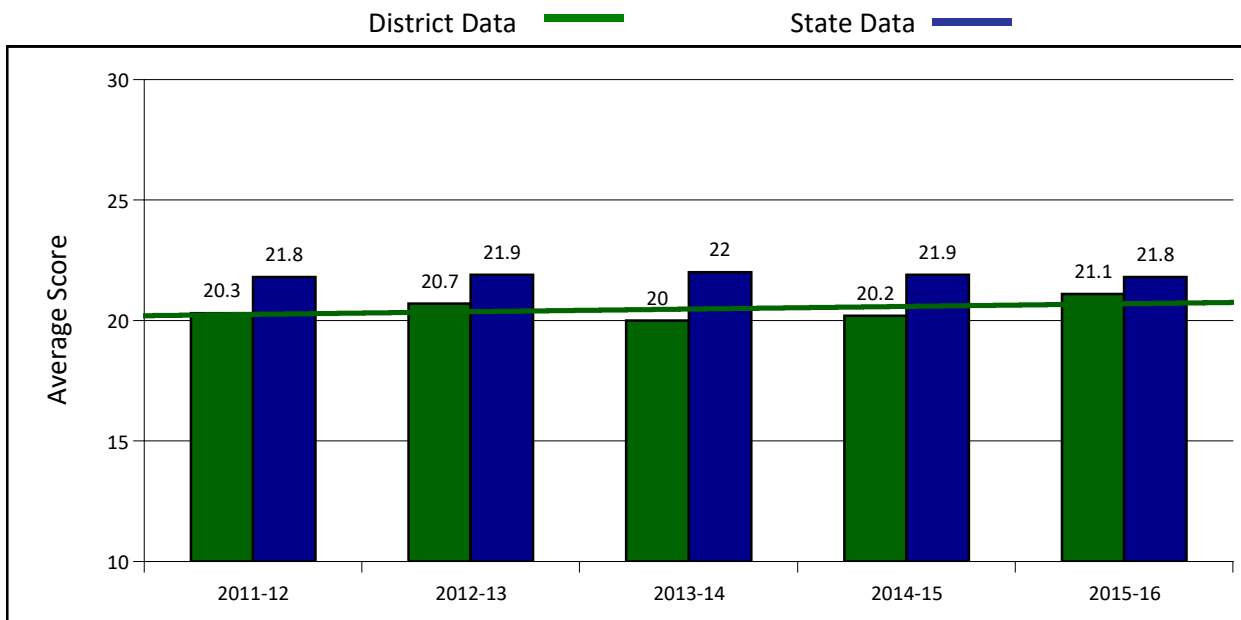
**4-YEAR COHORT GRADUATION RATES BY DISAGGREGATED GROUP:**

YEAR	ALL STUDENTS	FRL	SpEd	WHITE	BLACK	HISPANIC	MULTI-RACE	NATIVE AMERICAN	ELL
2011-12	92.7	88.5	100.0	93.3		100.0		66.7	
2012-13	96.2	93.3	100.0	95.8	100.0	100.0		100.0	
2013-14	93.0	87.2	66.7	92.6	0.0	100.0	0.0	100.0	0.0
2014-15	92.0	91.8	77.8	91.7	0.0	100.0	100.0	100.0	0.0
2015-16	94.2	90.2	77.8	94.8	0.0	100.0	100.0	50.0	0.0

\*Blanks indicate data suppression for <10 students in subgroup.

# College and Career Readiness

## AVERAGE ACT SCORES:



\*SOURCE: KSDE Kansans CAN - ACT Scores

## POSTSECONDARY SUCCESS:

### SUCCESS RATE:

A student must meet one of the four following outcomes within two years of High School graduation.

1. Student earned an industry recognized certification while in high school
2. Student earned a postsecondary certification
3. Student earned a postsecondary degree
4. Student enrolled in postsecondary in both the first and second year following high school graduation

### EFFECTIVE RATE:

A student must meet one of the four following outcomes within two years of High School graduation.

The calculated Graduation Rate multiplied by the calculated Success Rate.

YEAR	SUCCESS RATE		EFFECTIVE RATE	
	District	State	District	State
2011	34.4	54.8	33.4	45.6
2012	49.4	54.0	45.8	46.0
2013	48.0	55.5	46.2	47.6
2014	40.9	56.1	38.0	48.3
2015	42.0	50.9	38.7	43.6

\*SOURCE: KSDE KansansCAN - Board Goals / Postsecondary Success

## Reading Assessments Data

### ASSESSMENT SCORING EFFECTIVE 2014-15 SCHOOL YEAR

Level 1: Student is not performing at grade-level standards.

Level 2: Student is doing grade-level work as defined by the standards but not at the depth or level of rigor to be considered on-track for college success.

Level 3: Student is performing at expectation for that grade and is on track to being college ready.

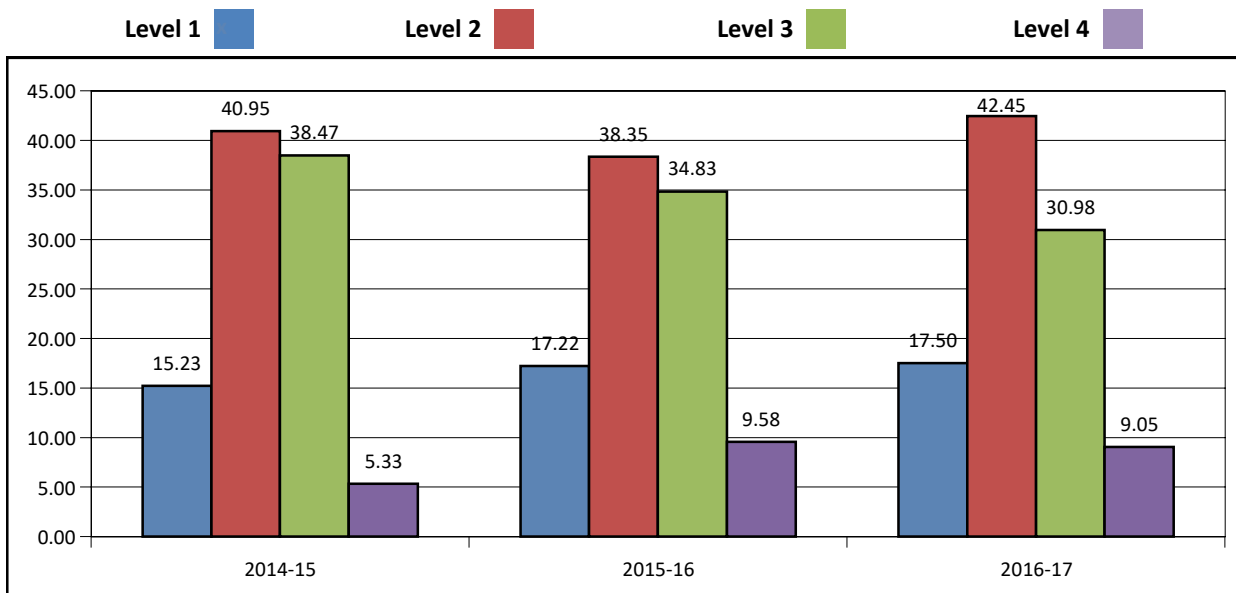
Level 4: Student is performing above expectations and is on-track to being college.

### PERCENT SCORING AT OR ABOVE GRADE LEVEL (ALL STUDENTS)

Numbers below represent the percent of students scoring in Level 2 or above. Groups with less than 10 students assessed for any given grade or year will be blank.

School Year	All USD	3rd	4th	5th	6th	7th	8th	High School
2014-15	84.75	96.03	98.60	88.67	86.51	74.69	86.99	63.36
2015-16	82.76	95.37	97.17	81.42	79.23	81.31	70.91	77.32
2016-17	82.48	89.02	89.54	83.08	82.34	73.67	82.93	75.32

### PERCENT BY SCORE LEVEL: ALL STUDENTS DISTRICT AVERAGE

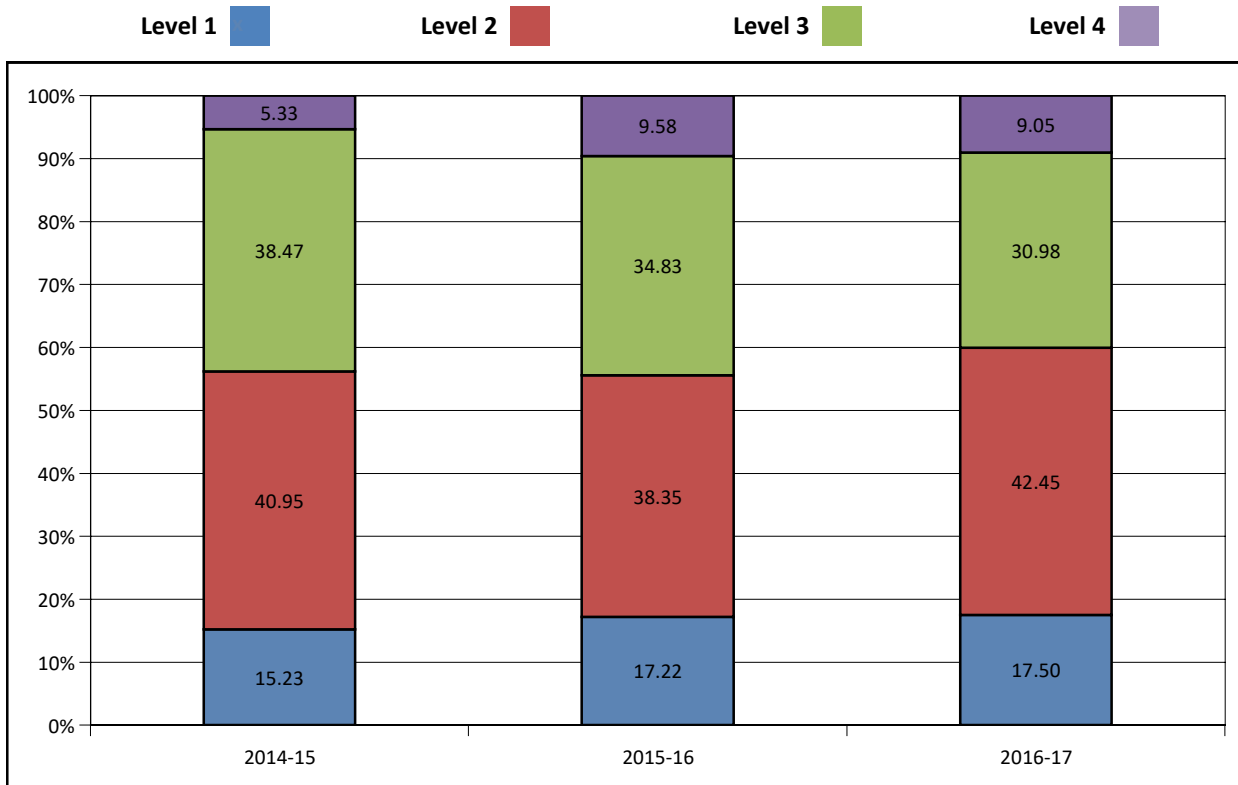


### SCORES BY SUBGROUP (ALL GRADES)

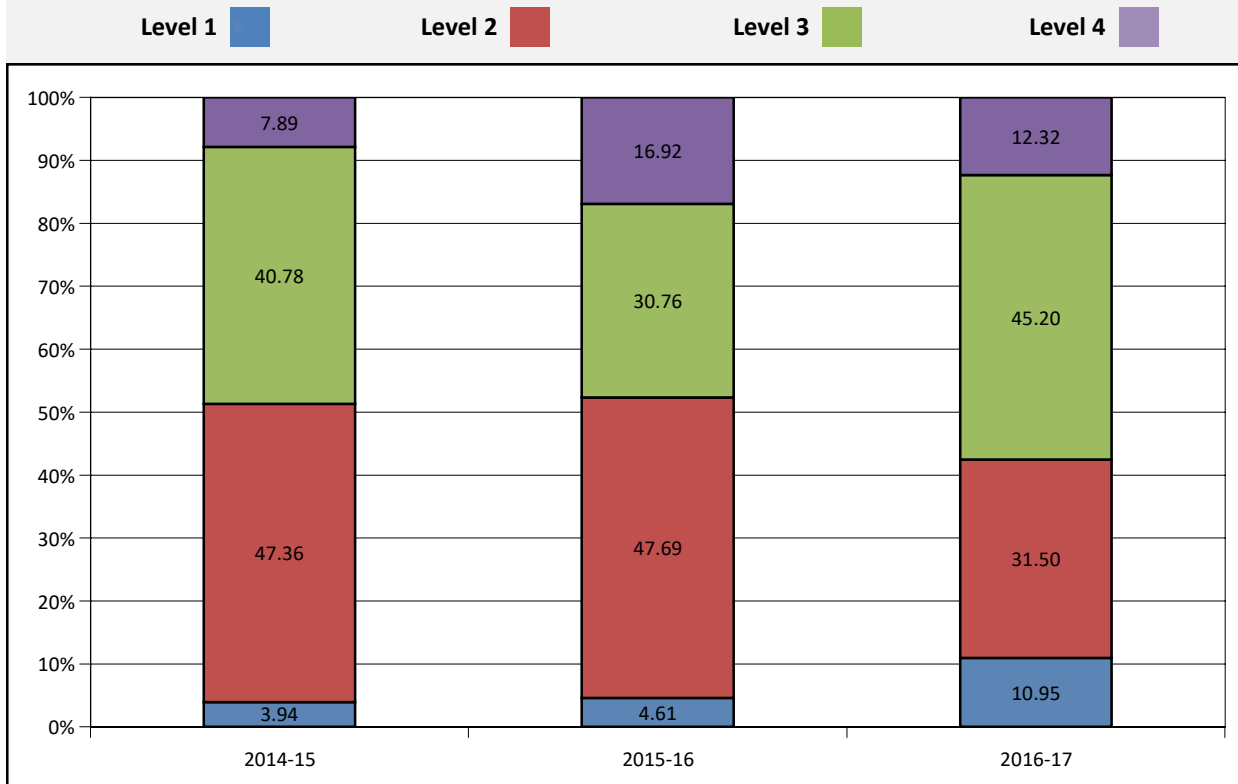
Numbers below represent the percent of students scoring in Level 2 or above. Groups with less than 10 students assessed for any given year will be blank.

School Year	All USD	All KS	FRL	SpEd	White	African American	Hispanic	Multi-Race
2014-15	84.75	79.26	57.88	68.51	84.11		93.32	99.99
2015-16	82.76	76.65	71.05	57.8	82.26		99.99	79.99
2016-17	82.48	72.63	77.76	54.99	82.18		79.99	

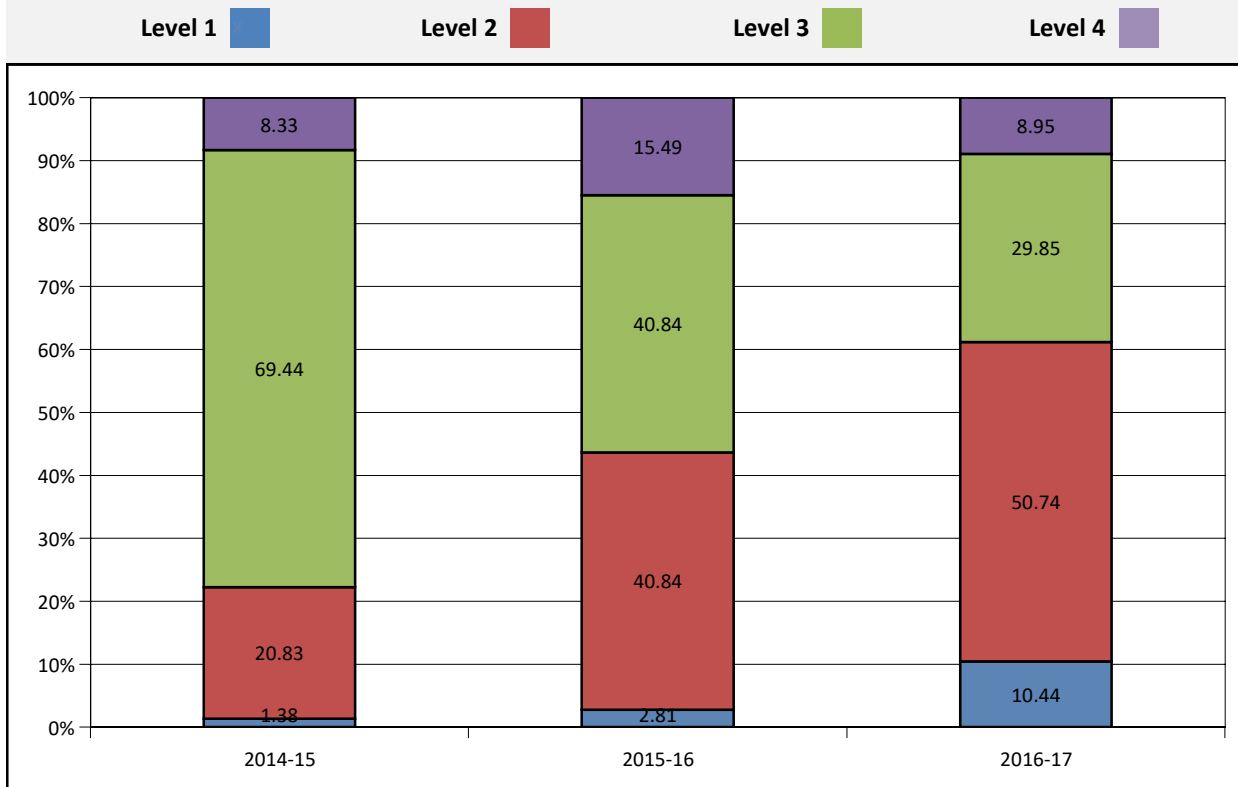
## District Average Reading Assessments Data



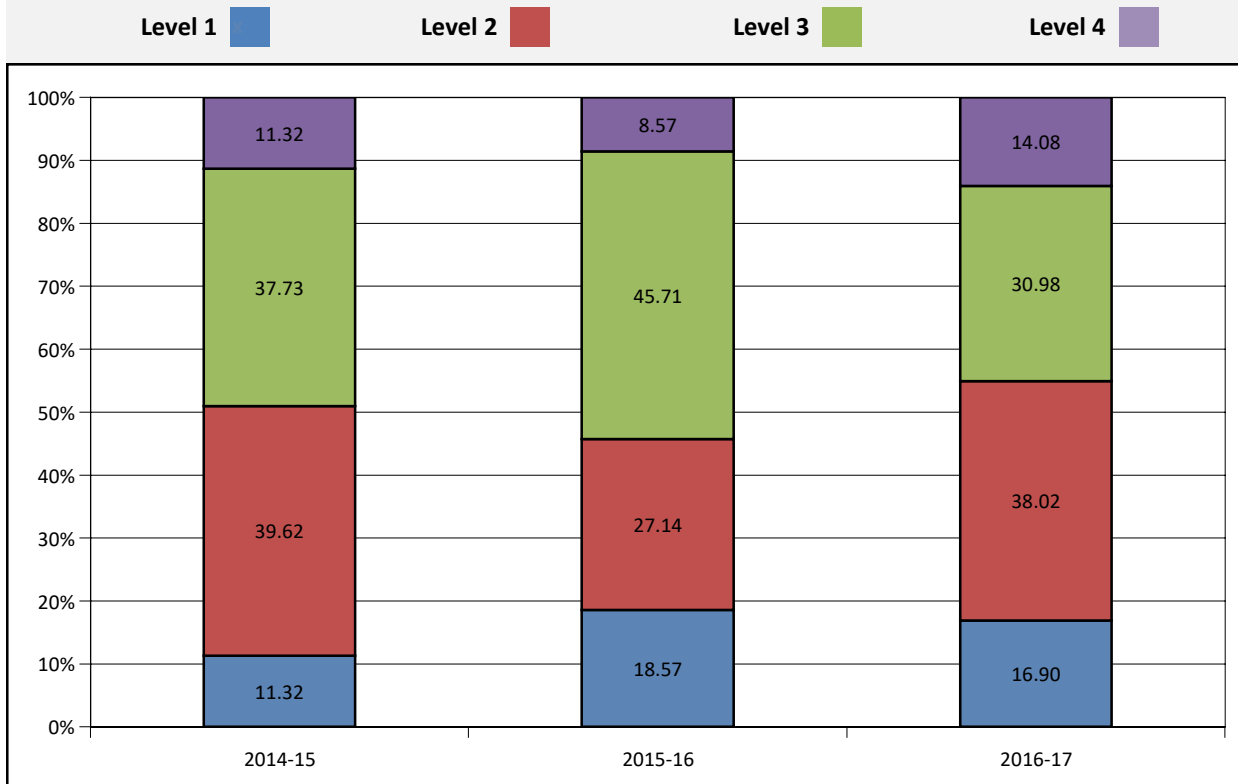
## 03 Reading Assessments Data



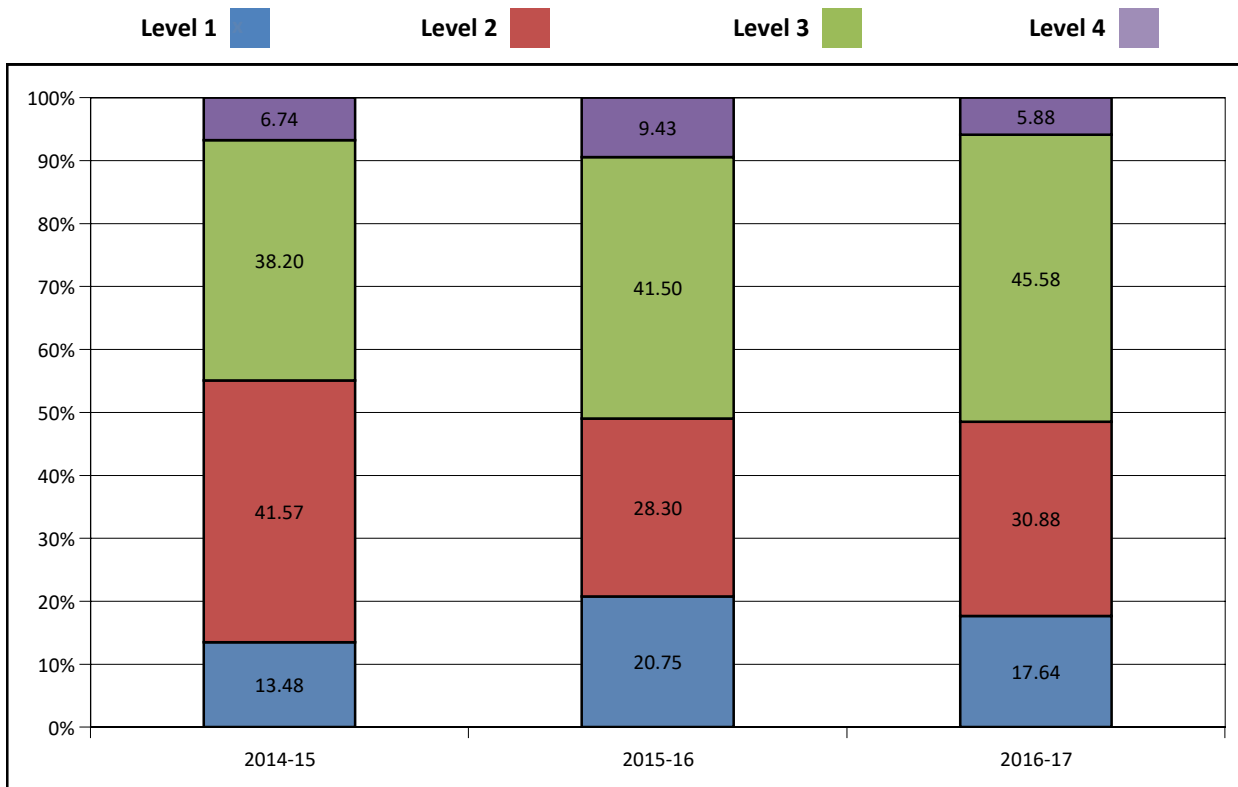
## 04 Reading Assessments Data



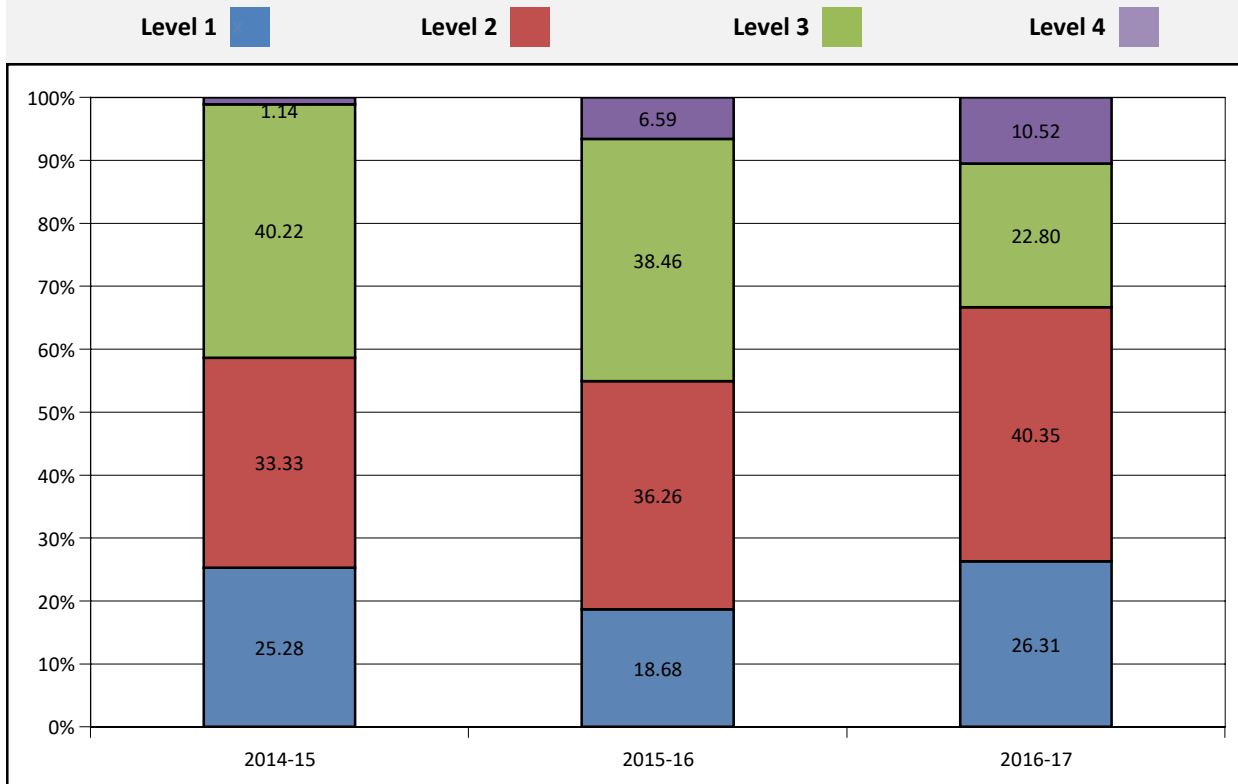
## 05 Reading Assessments Data



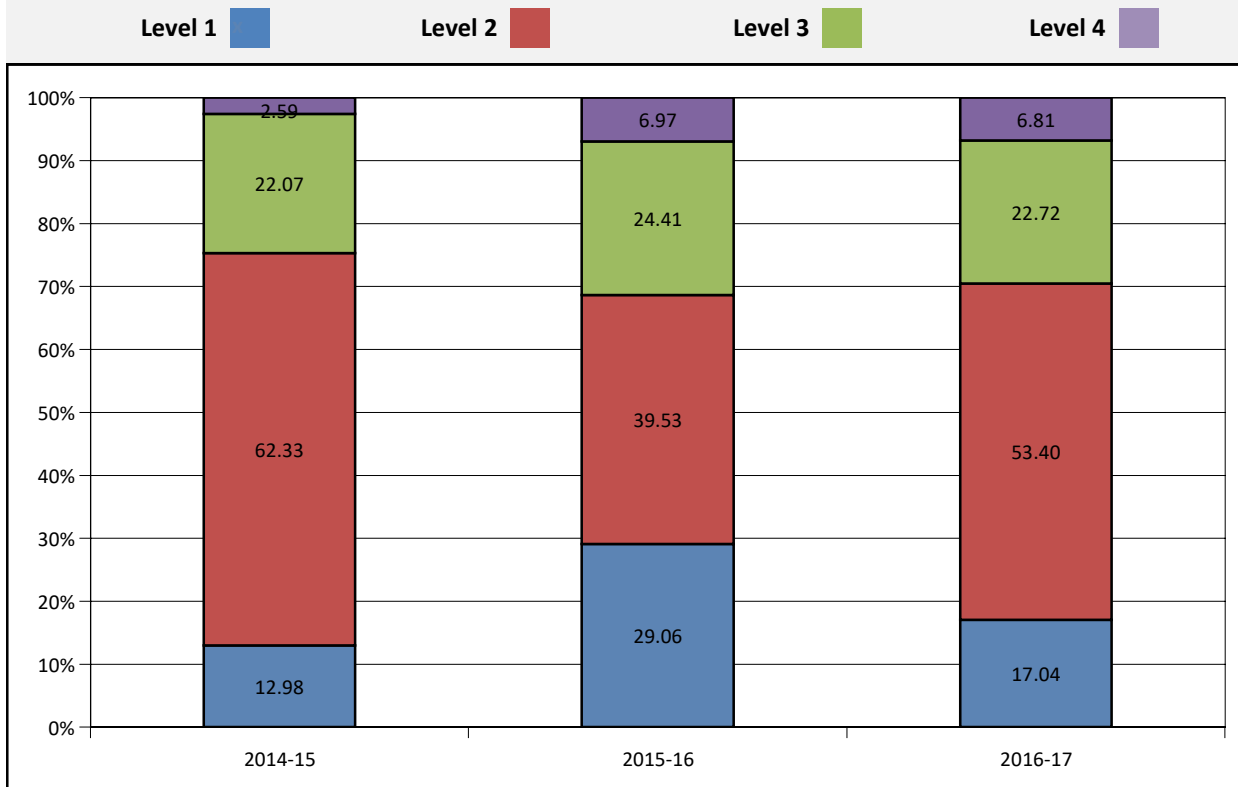
## 06 Reading Assessments Data



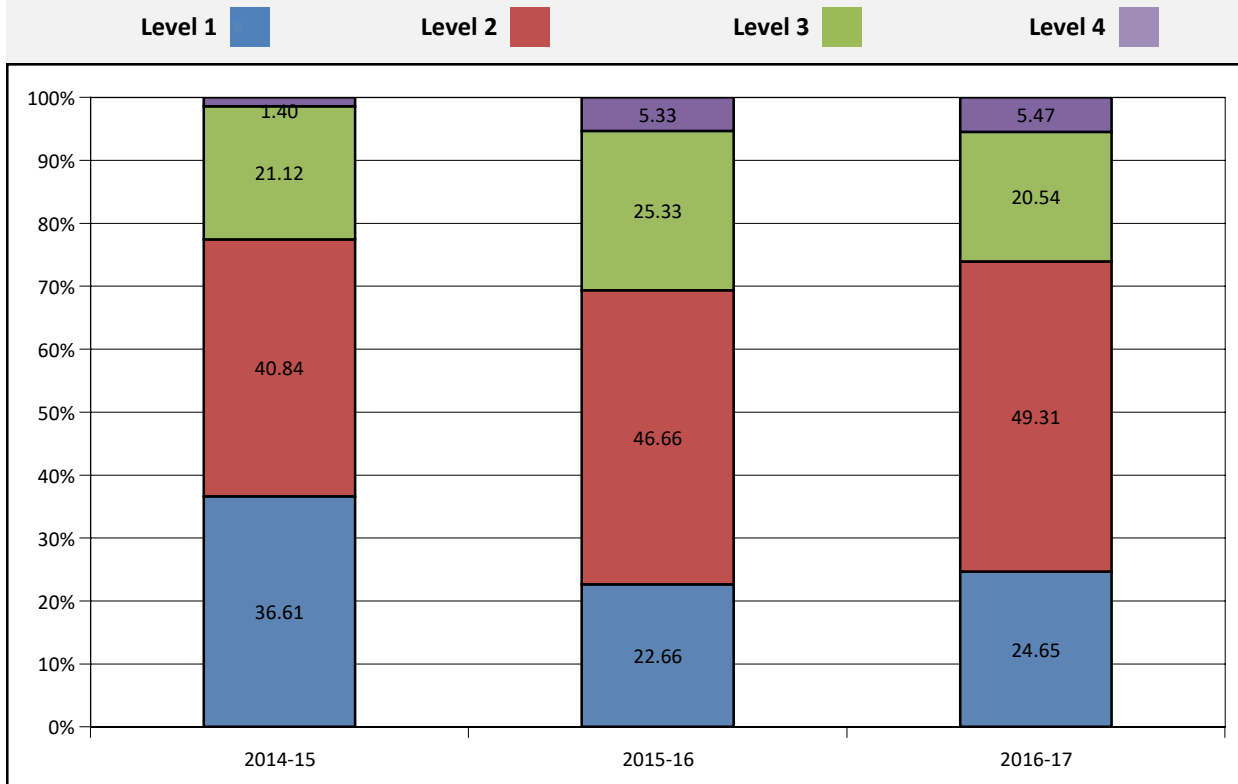
## 07 Reading Assessments Data



## 08 Reading Assessments Data



## HS Reading Assessments Data



## Math Assessments Data

### ASSESSMENT SCORING EFFECTIVE 2014-15 SCHOOL YEAR

Level 1: Student is not performing at grade-level standards.

Level 2: Student is doing grade-level work as defined by the standards but not at the depth or level of rigor to be considered on-track for college success.

Level 3: Student is performing at expectation for that grade and is on track to being college ready.

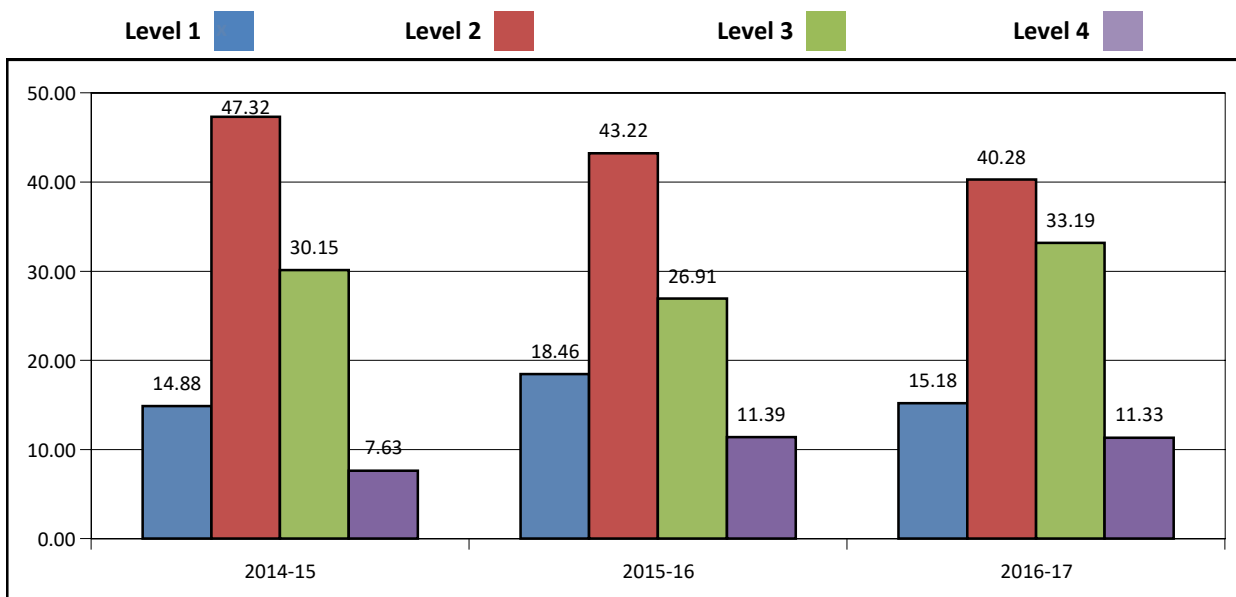
Level 4: Student is performing above expectations and is on-track to being college.

### PERCENT SCORING AT OR ABOVE GRADE LEVEL (ALL STUDENTS)

Numbers below represent the percent of students scoring in Level 2 or above. Groups with less than 10 students assessed for any given grade or year will be blank.

School Year	All USD	3rd	4th	5th	6th	7th	8th	High School
2014-15	85.10	99.99	95.82	92.44	89.75	81.59	83.10	53.51
2015-16	81.52	98.45	98.58	84.27	96.21	84.43	61.15	57.32
2016-17	84.80	95.87	94.02	88.72	91.16	89.27	82.75	54.15

### PERCENT BY SCORE LEVEL: ALL STUDENTS DISTRICT AVERAGE



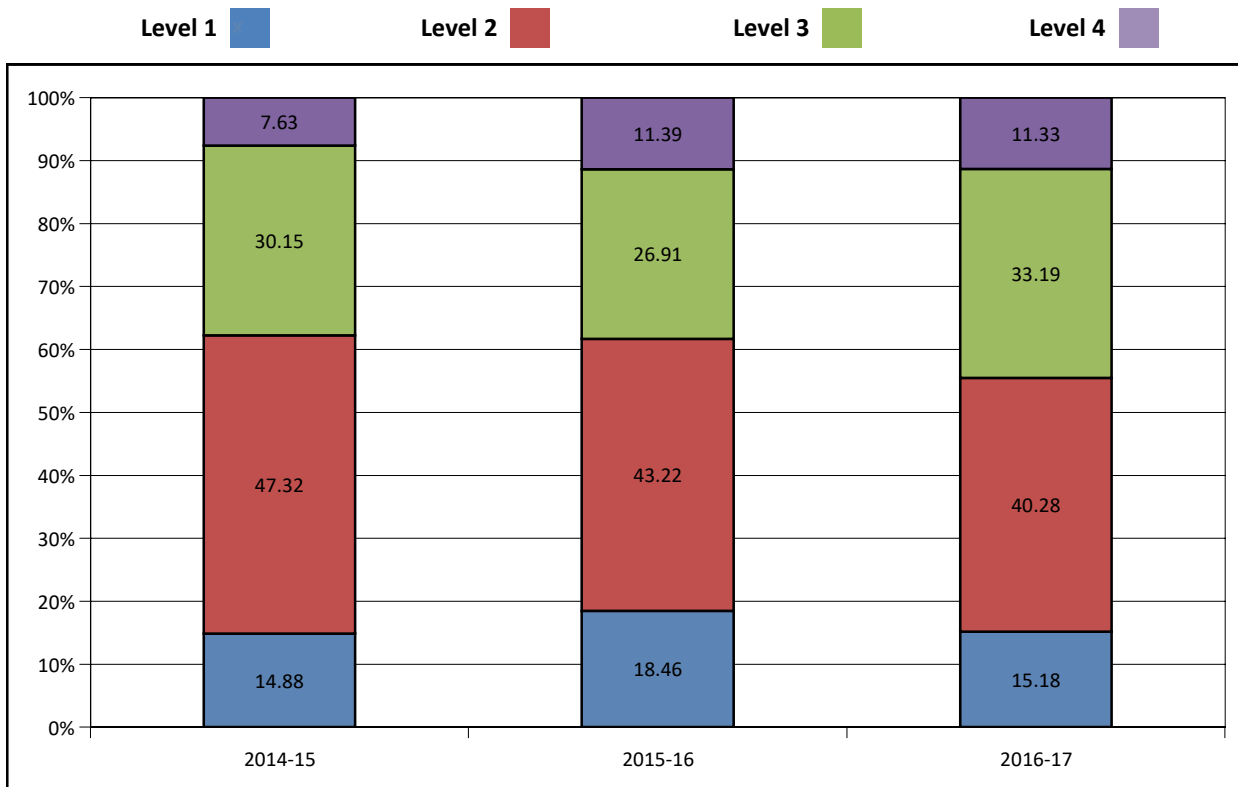
### SCORES BY SUBGROUP (ALL GRADES)

Numbers below represent the percent of students scoring in Level 2 or above. Groups with less than 10 students assessed for any given year will be blank.

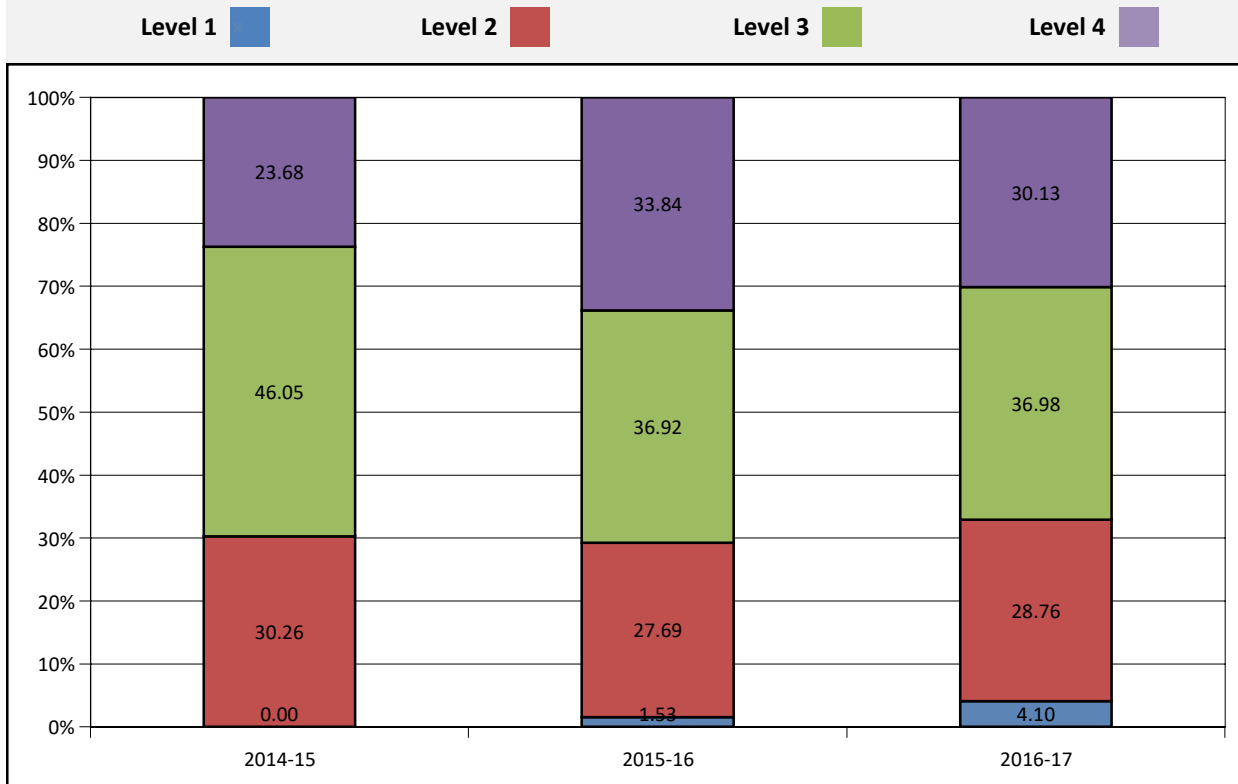
School Year	All USD	All KS	FRL	SpEd	White	African American	Hispanic	Multi-Race
2014-15	85.1	77.23	47.36	66.02	84.7		79.99	99.99
2015-16	81.52	73.65	39.46	56.44	81.97		83.33	66.65
2016-17	84.8	72.34	66.65	62.69	84.65		79.99	



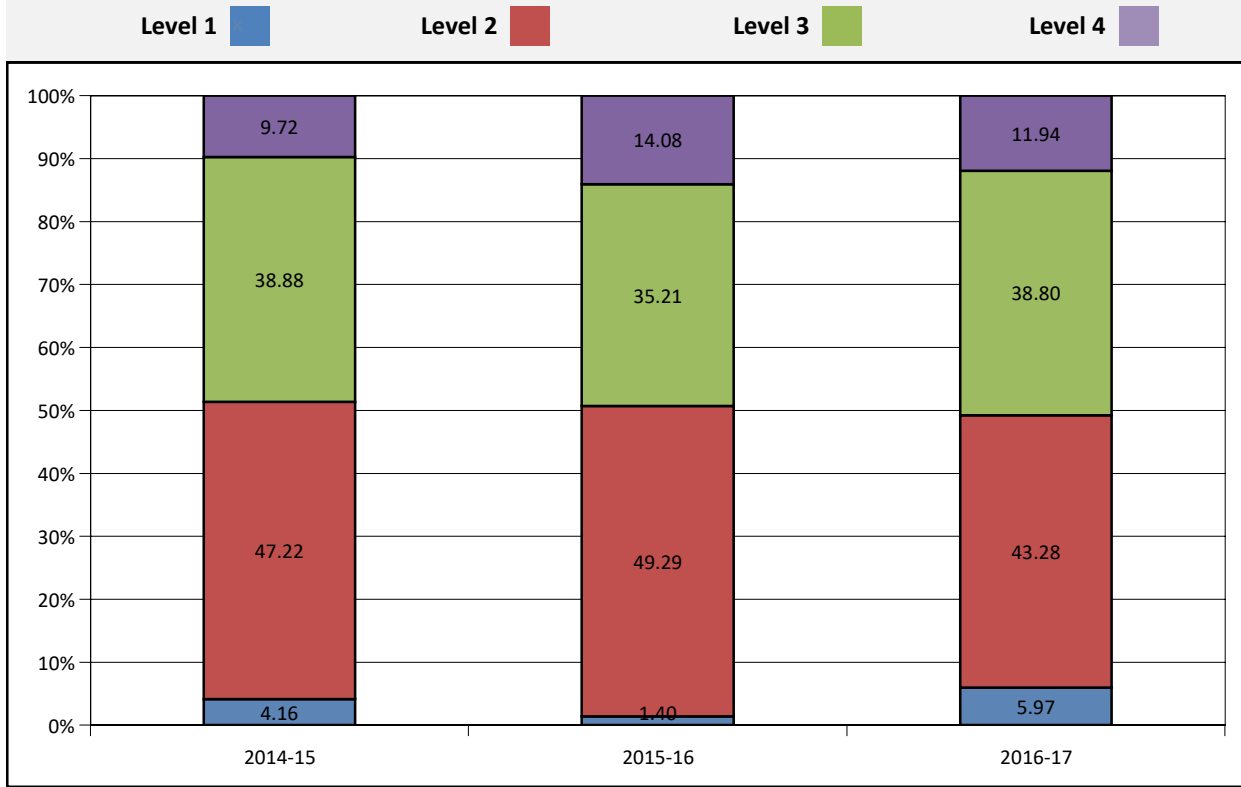
## District Average Math Assessments Data



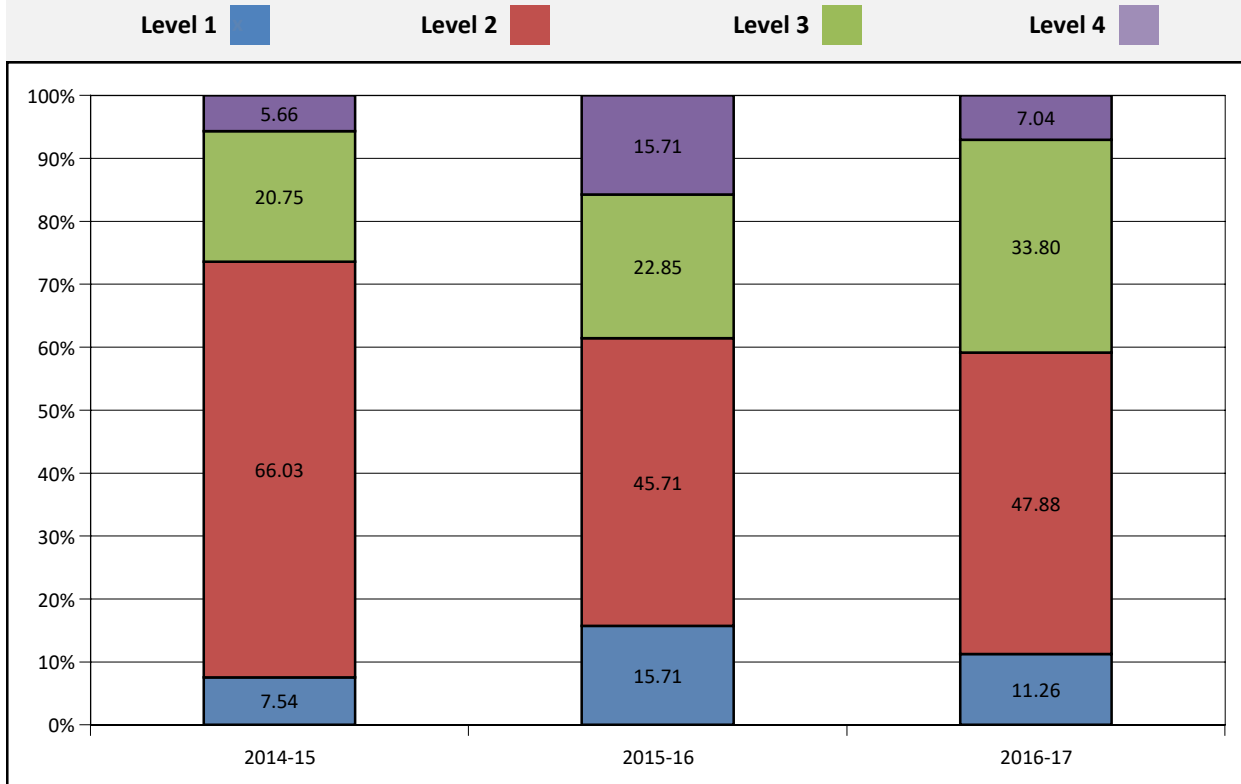
## 03 Math Assessments Data



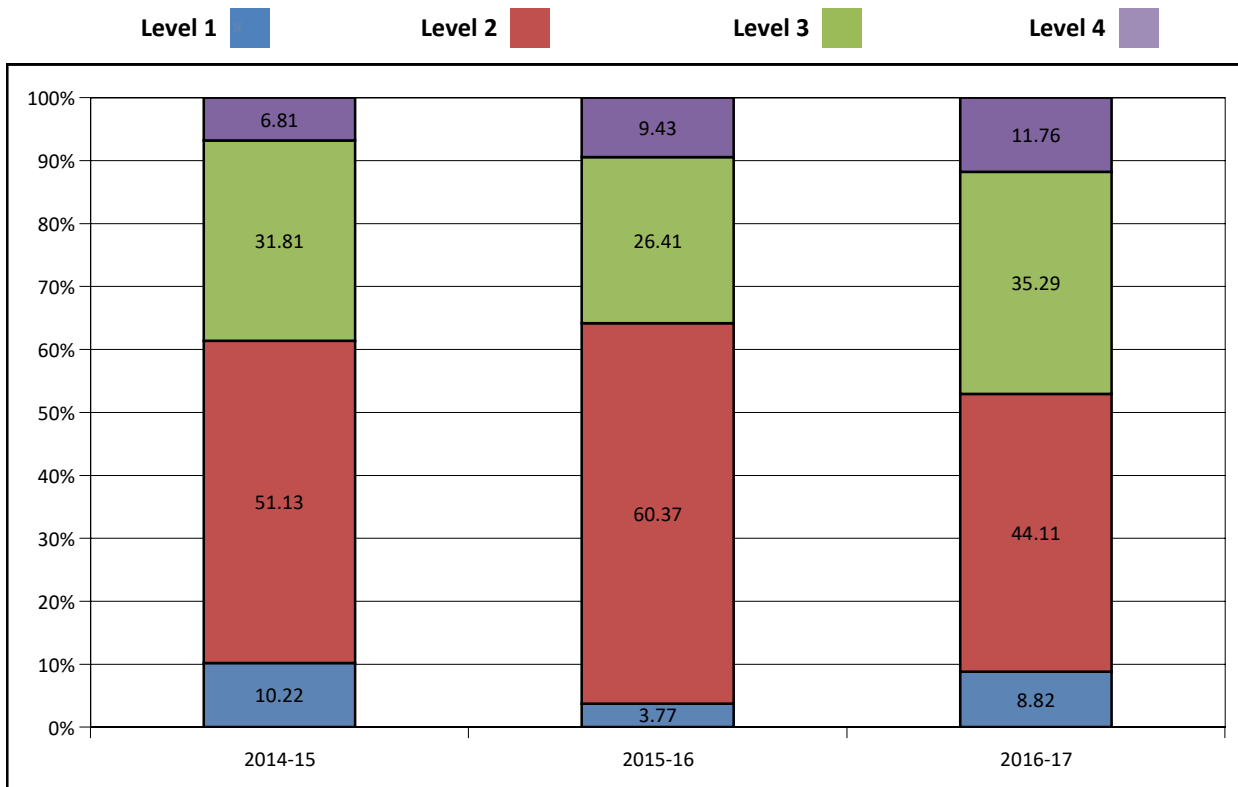
## 04 Math Assessments Data



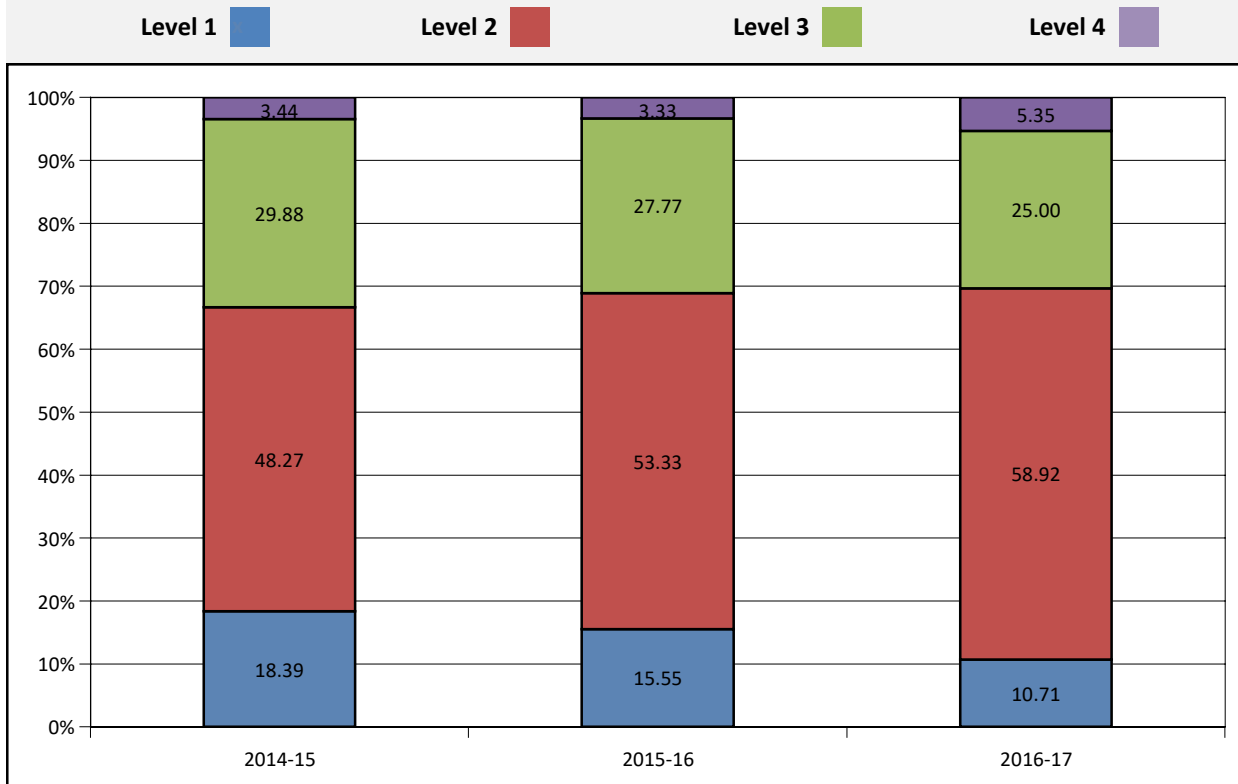
## 05 Math Assessments Data



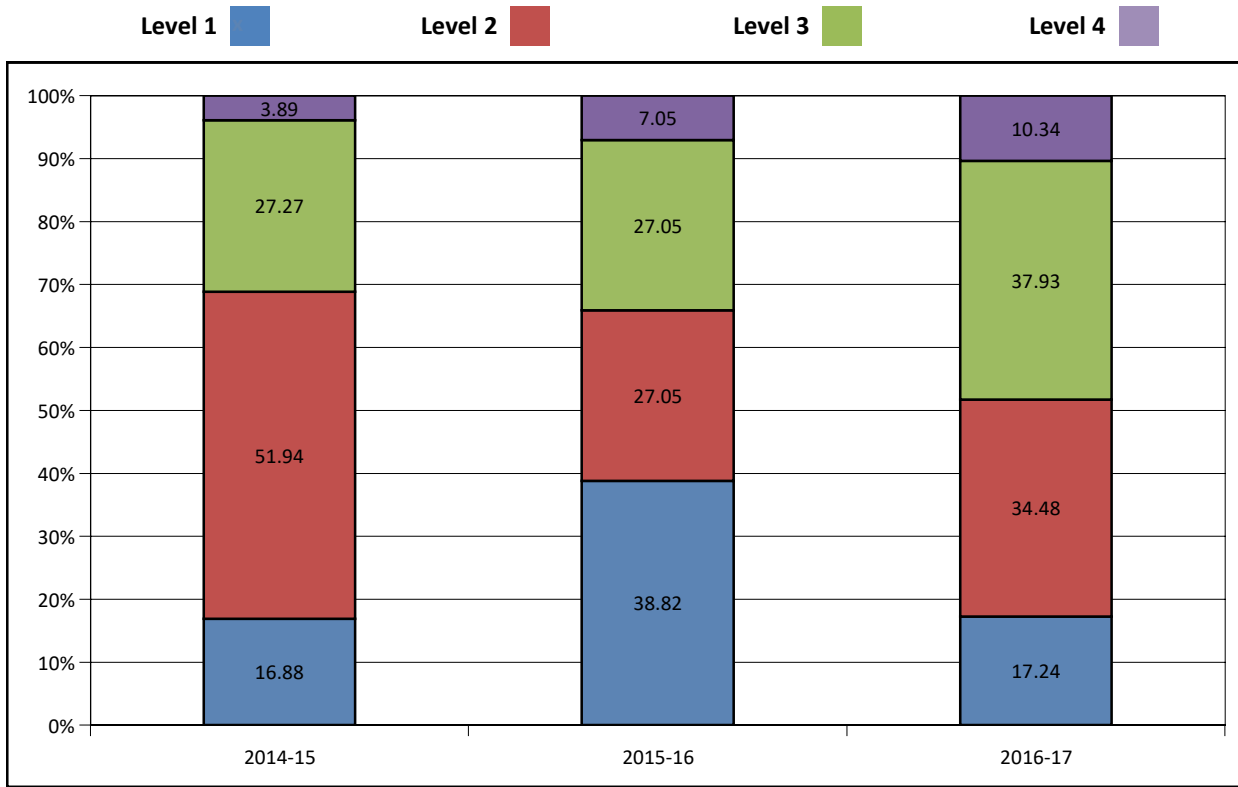
## 06 Math Assessments Data



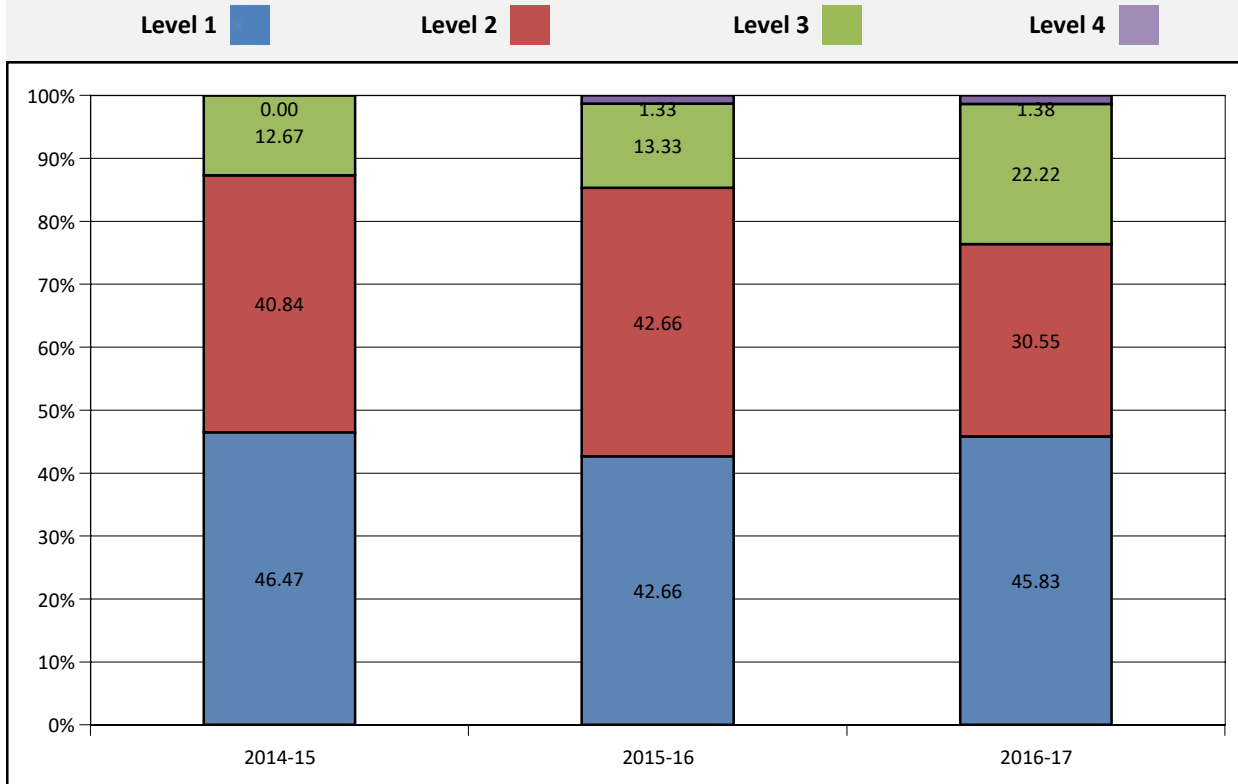
## 07 Math Assessments Data



## 08 Math Assessments Data



## HS Math Assessments Data



# District Comparisons

**US Census: American Community Survey**      District      USD 362      USD 288      USD 479 Crest  
**5-Year Data 2015**      365      Prairie View      Central Heights

## FAMILY INCOME:

Median Family Income	\$57,500	\$60,975	\$60,500	\$47,813
Mean Family Income	\$62,258	\$70,133	\$68,074	\$55,443
Percent of families with children in poverty	29.1	10.4	26.1	33.5
Percent of households with Public Asst income	2.5	1.2	3.2	3.1
Percent of households with Food Stamp benefits	10.7	7.3	10.6	7

## EDUCATIONAL ATTAINMENT:

### Population over 25 years old - percent

Less than 9th grade	3.8	4	1.2	1
9th to 12th grade - No Diploma	5.6	7.5	5.7	7.4
High School Diploma or Equivalency	38	37	40.7	40.8
Bachelor's Degree or More	11.7	11.3	9.6	9.9

## HOUSEHOLD COMPOSITION:

Percent of households that are families	64.4	71.5	76.2	74.4
Average family size	2.98	2.7	2.85	2.91
Married couple families (children under 18)	19.8	17.2	17.4	20.2
Single parent household- female only	6	5.4	6.6	2.7
Single parent household- male only	1.1	5	3.9	3.6

## Kansas State Department of Education Data

### HEADCOUNT ENROLLMENT:

Headcount Enrollment (2017-18)	1023	891	555	221
Free or reduced lunch students (%)	34.1	38.2	51.7	36.7
FTE Enrollment (2016-17)	953	881	531	210
Student / Teacher Ratio (2016-17)	11.9	14.2	11.7	11.1

### FUNDING: 2016-17

Assessed Valuation per Pupil	\$80,836	\$190,834	\$49,015	\$83,569
Expenditure per Pupil	\$13,505	\$15,528	\$14,532	\$12,851

### GRADUATION / DROPOUTS:

4-Year Cohort Graduation Rate (2015-16)	94.2	90.5	92.7	93.8
Dropout Rate (2015-16)	0.4	2.4	1.1	0

### ASSESSMENTS (% Levels 2,3,4): 2016-17

Reading Assessments (All Students)	38.2	28.2	43.7	40.3
Math Assessments (All Students)	43.4	24.6	36.1	24.2