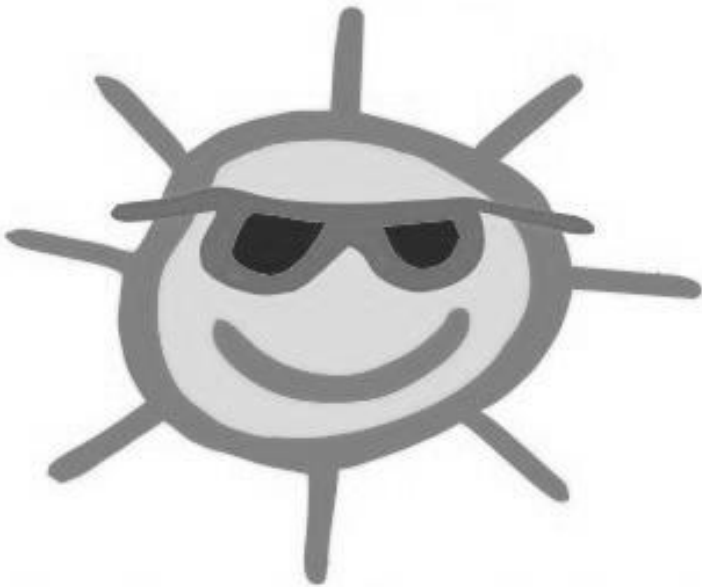


# Camp Raider's

After School Program &  
Summer Day Camp



Sponsored By  
Nettleton Public Schools  
3300 One Place  
Jonesboro, Arkansas



## **PROGRAMS**

The Nettleton child care programs include: Camp Raider's After School Child Care Program which operates from the time school is dismissed each day until 5:30 p.m.; Camp Raider's Summer Child Care Program which operates in the summer months from 6:30 a.m. until 5:30 p.m.

## **PHILOSOPHY**

The Camp Raider child care programs offer quality supervised activities and a stimulating environment for children Kindergarten through the Sixth grades as an exciting alternative to "just babysitting". The programs provide a variety of educational, recreational, and developmental activities, both active and passive.

A concerned and caring staff will help the children become self-directed and self-disciplined individuals. Each child will be valued as a unique person capable of worthy ideas and actions. A major objective will be to provide a caring and supportive social/emotional climate to help children develop self-respect for their own ideas and abilities.

## **OBJECTIVE**

To provide an environment and schedule where children can work as individuals, in small groups, and in large groups to verify their sense and understanding of self-worth. Children will be provided with an opportunity to relate positively to persons of several age groups.

To provide an environment, activities, and equipment to help a child develop his/her intellectual skills. Time and supplies will be available so the child can try out new ideas and utilize previous learning experiences logically as a basis for new experiences.

To provide the space, time, and guidance to help each child develop large and small body muscles.

To provide information to the parents relative to the child's development in the program and to his/her adaptability to the program.

## **GOALS**

Encourage the children to express themselves through materials, movement, and language by providing them the time and opportunity in the following manner.

- ◇ Develop a positive self-image.
- ◇ Provide opportunities to develop whole bodies through:
  1. First-hand experience in social relationships;
  2. Physical development of large and small muscle groups;
  3. Finding acceptable outlets for emotions;
  4. Stimulating experiences;
  5. Encourage them to think, analyze problems, and arrive at different possible solutions.
- ◇ Stimulate language development by hearing and using language skills.
- ◇ Encourage independence.
- ◇ Help them increase their knowledge by asking questions and exploring their environment.
- ◇ Develop curiosity.
- ◇ Give basic experiences for future learning.
- ◇ Provide experience with other children.
- ◇ Meet the children's needs as individuals and as a group.
- ◇ Develop a positive attitude toward school and home.
- ◇ Know there are friendly adults outside of the home.
- ◇ Provide experiences they do not have at home.

## CALENDAR

On days the school is scheduled to be closed, such as parent/teacher conferences, teacher in-service days, and flex days, the Camp Raider program will offer an "All Day Care" day. The program will be open from 7:00 a.m. until 5:30 p.m. If school is in session for half the day, the program will operate immediately after school is dismissed until 5:30 p.m. There will be no additional charge for these days. During Christmas Vacation and Spring Break, the program will operate all day, and the fee will be adjusted accordingly. On an "All Day Care" day, the children are required to bring a nutritious sack lunch (**no microwavable items please**), and the program will provide two snacks.

\*Any time the regular school day is cancelled because of inclement weather, Camp Raider Programs will be closed.

## SCHEDULES

### AFTER SCHOOL SCHEDULE

Students will remain in their regular class with their teacher until they are released to Camp Raider's After School Program.

3:00-4:00 = Arrival time and check attendance, snacks, arts, crafts, and projects

4:00-5:00 = Free time, finish projects, structured playtime, outside activity

5:00-5:30 = Homework, quiet time, clean up

5:30 = Camp Raider After School Program closes

### CAMP RAIDER'S SUMMER SCHEDULE

Camp Raider operates during the summer vacation period. The program opens at 6:30 a.m. and closes at 5:30 p.m. The daily schedule includes various activities including, but not limited to, swimming, literature experiences, guest speakers, field trips, movies, supervised play, and sports. Breakfast, a nutritious lunch and an afternoon snack are included.

## FEES

### AFTER SCHOOL PROGRAM FEES

The fee for this service is \$50.00 per week for one child; \$95.00 per week for two children; \$135 per week for three children. Scholarship assistance is available on a "*first come, first served*" basis.

\*Nettleton staff members will receive an employee discount.

### CAMP RAIDER'S SUMMER PROGRAM FEES

The fee for this service is \$130.00 per week for one child; \$250 per week for two children; \$365 per week for three children. Scholarship assistance is available on a "*first come, first served*" basis.

\*Nettleton staff members will receive an employee discount.

## **PAYMENTS FOR ALL CHILD CARE PROGRAMS**

The Camp Raider child care programs operate as self-supporting, non-profit programs financed by enrollment fees. Weekly fees will be charged regardless of absences as there are no part-time positions. Understanding that unexpected events may occur resulting in long-term absences from the program, charges acquired during this time are at the discretion of the director. During the summer months, participants who take vacations may have one week without payment. The director must receive a written notice of dates the child will be absent at least one week prior to the event, or normal charges will apply.

All payments must be online. Any accounts more than four weeks past due are subject to immediate dismissal.

***The program will not send out end-of-the-year tax statements.***

## **LATE PICK-UP**

The Camp Raider child care program ends at 5:30 p.m. A late fee of \$1.00 per child will be assessed every minute past 5:30 the child remains at the program. The late fee is payable immediately to the staff person on duty when the child is picked up. This fee represents a small portion of the actual costs for keeping the building open. Please try to be prompt. Repeated lateness will result in dismissal.

## **PROGRAMS**

Children in the Camp Raider child care programs will be supervised by a well trained, caring staff. A stimulating program geared to the child's development and age, which includes a variety of experiences related to large motor skills, small motor skills, creative art, and books will be offered at the school. The staff will work with the children in a positive manner. Teachers will be alert to disturbing situations and attempt to intervene before they become a problem. ***Children attending must be able to eat solid food and be independently toilet trained.*** Staff and/or the director will be available if parents wish to schedule a conference. Parents may call the program whenever necessary. Parents are encouraged to participate in the program. Suggestions to improve the program are always welcome.

## **ACTIVITIES**

Children will enjoy a variety of recreational, educational, and developmental activities with a minimum of formal structure in a well supervised and comfortable environment. Children take part in many group and individual experiences which encourage the child's physical, intellectual, and social development. Every effort is made to provide children with a safe and nurturing environment that will assist in positive emotional development. The program will offer activities that include art and crafts projects, games and toys, sports, storytelling, books, films, guest speakers, field trips, and special projects. All activities are designed to complement, without duplicating, the traditional school day experience.

## **STAFF**

The Camp Raider child care program will be under the direction of the Superintendent of the Nettleton Public School System, Mr. James Dunivan, the Camp Raider Program Director, Renée Robinson, and a qualified and caring staff who are sensitive to children's needs. The Camp Raider staff are required by law to report anything suspicious by nature to the Child Abuse Hotline. Children may be interviewed by Child Care Licensing Specialists, Investigators or Law Enforcement Officials.

## **LOCATION**

The Camp Raider child care programs will be located at the Nettleton Pre-K Center. All children from Fox Meadow Elementary, Fox Meadow Intermediate, University Heights Elementary and University Heights Intermediate will be bused to the Pre-K Center by Nettleton buses with Camp Raider staff riding. All children from the Nettleton Steam School will be walked over by the Camp Raider staff.

## **PARENT'S TABLE**

Please familiarize yourself with the Parent's table in the entrance hallway. The Sign In/Out sheet and other information will be placed here for you.

NOTE: An information sheet for each child must be on file with the director.

## ADMISSION AND GENERAL POLICIES

Children ages 5 – 12 years will be served (Grades K-6). Children of all races, religion, and creed will be accepted in the program.

Camp Raider's After School Program will be open Monday through Friday, after school until 5:30 p.m. A nutritious snack will be provided daily in the afternoon.

Camp Raider's Summer Program hours are 6:30 a.m. until 5:30 p.m. and includes breakfast, a nutritious lunch and an afternoon snack.

All registration forms must be on file at the school prior to the child's attendance in the program. A health care form must be completed for each child.

Children must check out with a teacher or aide before leaving the center for the day. Children walking home must bring written permission from the parent/guardian to the teacher. All persons who pick up each child must be authorized to do so by the person enrolling the child. ***Any person not recognized by the staff, must show a form of picture identification.***

Student belongings should be labeled. The program will not be responsible for lost articles or toys.

The school carries liability insurance to protect its interests. Parents who wish health and accident coverage on individual children should consult insurance agents or take out additional coverage through the school.

It is the parent's responsibility to notify the school when the child will be absent. Calls can be made directly to the school that the child attends or to the program director.

## CAMP RAIDER'S SUMMER PROGRAM

All rules of the Camp Raider After School Program will be in effect.

All personal items (including swimsuits, towels, sunscreen, etc.) should be labeled in a permanent way.

T-shirts, to be worn over swimsuits, are recommended for those who sunburn easily.

Camp Raider will walk next door to the Nettleton Intermediate Center for lunch daily supervised by Camp Raider staff.

When Camp Raider is away from the building for outings, notices will be placed on the entrance doors. Outings are generally concluded by 4:00 p.m.



## **DISCIPLINE**

Behavior standards for children will be the same as the regular school day. Constant failure to meet these standards will result in dismissal from the program.

The basic rule is: Any behavior which may hurt one's own person, someone else, or the equipment will not be permitted. This *does* include verbal abuse. Poor behavior will be handled by the loss of the privilege of participating in the activity the children are involved in when the misbehavior occurs. In cases involving the use of equipment, the child will lose the right to use equipment for that day. Time out or time away from the group will be used until the child regains control of his/her temper. Each child will be dealt with as an individual, and we find that different things work with different children.

## **BEHAVIOR RULES**

1. All children must follow the directions of the teachers.
2. No cursing, teasing, or threatening will be allowed.
3. Each child must show proper respect to others and respect the rights and property of all students.
4. All materials must be returned to their proper place when an activity is concluded.
5. All children must keep hands, feet, and objects to themselves and should not interfere with others.
6. Children may not leave assigned area without permission.

## **POSITIVE CONSEQUENCES MAY INCLUDE**

Verbal praise and immediate feedback  
Positive comments to parents  
Participation in special activities or events  
Special privileges granted

## **NEGATIVE CONSEQUENCES FOR BREAKING THE RULES**

Time out or time away from the group. Teachers and child may discuss the child's behavioral problems.

Child will lose play and/or recreational privileges.

Conference between child, parent, and teacher.

Dismissal from the program, immediate or with notice, at the discretion of the director.

## **SUSPENSION**

Children enrolled in the Camp Raider programs are expected to be responsible for their own behavior and to respect the rights of others. The teachers encourage each child to learn from mistakes and to find acceptable ways to handle stressful or difficult situations. Time out or time away from the group allows the child time to calm down, to reflect on behavior, and to evaluate the alternatives.

Parental help will be requested with behavior problems that cannot be solved by time out. We reserve the right to suspend a child from the program. The suspension period will vary, depending upon the offense. Regular weekly fees will apply during suspension.

## **EXPULSION**

We reserve the right to expel a child from the program, after all positive efforts have been made, and the child cannot conform to the required behavior. Dismissal may be immediate or with notice. The child will not be allowed to re-enter the program.

## **MEDICAL AND EMERGENCY**

Children entering the program must have current immunization records. All medical and personal history forms must be completed before the child enters the program.

Prescription and over the counter medications will be given with written instructions and permission from the parent/guardian. Parents must bring the medication in the original prescription bottle with complete instructions that include the name of the prescription, why the prescription is needed, what time the medication should be given, and how much medicine is to be given to the child. The parent or guardian will be requested to get written permission from the doctor for long-term medications that need to be administered for longer than 10 days.

An approved first-aid kit will be available at the school for treating minor emergencies. In case of more serious emergencies requiring the attention of a physician, parents will be notified and be responsible for taking their child to a physician. In case of a life-saving emergency, a child will be taken directly to a physician or hospital.

## SCHOOL CLOSING

In the event of an emergency school closing, the procedures listed below will be followed:

The Camp Raider child care programs will not be held when all other school activities have been cancelled due to an emergency or inclement weather. The decision to close the school is made by the Nettleton Public Schools Superintendent and is based on the safety risk involved for students and staff to reach the school building.

If school is dismissed during the school day due to bad weather, Camp Raider students will sent home at the same time all other students are released.

If school is cancelled the night before or in the early morning before school begins because of inclement weather, Camp Raider ***will be closed***. Parents should view the Nettleton Public Schools website as all updates are on the main webpage. The school closings will also be listed on the television station KAIT TV and their web site at [www.kait8.com](http://www.kait8.com).

## EQUITY GUIDELINES

It shall be the policy of the board of Education that the School District shall place an equal emphasis upon the nondiscriminatory provision of educational opportunities for children, and no person shall be denied the benefits of any educational program or activity on the basis of race, color, handicap, creed, national origin, age, or sex. All programs offered by schools within the School District shall be open to all students in compliance with statutory and judicial requirements.

## PARENT QUESTIONS OR COMMENTS

Parents who need to contact the director, Renée Robinson, may do so at the following email, [campraider@nettletonschools.net](mailto:campraider@nettletonschools.net) or visit our website [www.campraider.com](http://www.campraider.com). Other important Camp Raider phone numbers are as follows:

Cell phone: 870-530-0137

Cell phone: 870-530-0182

