

HOORAY!



I'M A SENIOR!!!

Packets contain . . .



Transcript

Credit Check

Schedule with your required classes highlighted and awards to put on resume'

College Visit Sheet

Senior Year Calendar

E-mail form to receive *Senior Scoop* newsletter and other pertinent information

Financial Aid Flyer

Social Studies State Assessment Results

If taking ACC class(es) this fall . . .

ACC payment information – classes must be paid for **ASAP!!!** If you hadn't paid already, your statement was stapled to your schedule at enrollment. If you added class(es) or changed any, please check your statement in your account under the Finances tab!

ACC online class information – you must log into your class on **AUGUST 20th!!!**

ACC night class information – General Psychology begins **AUGUST 20th**, 6 pm, Mrs. Loucks' room

CURRICULUM PROGRAMS



- ➡ **BHS GRADUATION**
- ➡ **QUALIFIED ADMISSIONS**
- ➡ **KANSAS SCHOLARS CURRICULUM**
- ➡ **NCAA – DIVISION I and II ELIGIBILITY**
- ➡ **NAIA ELIGIBILITY**

NCAA – DIVISION I and II

www.eligibilitycenter.org

Cost: \$80.00

You will get an e-mail with directions on completing your registration. Have the Guidance Office send a transcript now and again after you have graduated!

ACT score must be sent directly from ACT; their code number is 9999. Have your scores sent each time you take the ACT!

Amateurism form must be submitted as well; information relating to it is available in your NCAA account, and it is available in April.

NAIA ELIGIBILITY

www.playnaia.org Cost: \$80.00

To be eligible, you must graduate from high school and meet TWO of the following:

Earn a composite of 18 or higher on the ACT or
earn 860 on the SAT critical reading and math

Earn a minimum cumulative GPA of 2.0 on a 4.0 scale

Rank in the top 50% of your graduating class

ACT score must come from them directly; use code 9876 when registering for the test!

STUDENT ATHLETES and CHEERLEADERS

Wendy's High School Heisman Award

Must be a senior

Must have a minimum GPA of 3.0

Must participate in a high school sport or cheerleading

The online application is available now at

<https://www.wendyshighschoolheisman.com/>

**Your application must be completed by 5 pm,
OCTOBER 17, 2018.**

I have to review them by 5 pm, OCTOBER 19, 2018.

You are allowed to name your own reviewer, but it would be best if you all named me because the reviewer checks grades, GPA, etc. Also, if I am the reviewer, I can keep a list of everyone who applies and not miss recognizing someone at Senior Honors Night!

The first 1,000 students to complete an application will receive a \$10 Wendy's gift card.

All applicants will receive a certificate at Senior Honors Night in May.

The company will choose one male and one female school winner. They will be entered into the state finalist pool from which one male and one female applicant will be chosen to go to the national level. State winners who do not go on to the next level receive a \$500 scholarship, a silver medal, and a Wendy's High School Heisman State Winner Patch.

The two state winners will move on to Nationals and could become either National Finalists or National Winners. Winners could be awarded up to \$5,000 in scholarship money!



HONORS GRADUATION REQUIREMENTS

BASED ON 7th SEMESTER GPA!!!!!!

CUM LAUDE –

cumulative GPA of 3.2 – 3.49

MAGNA CUM LAUDE –

cumulative GPA of 3.5 – 3.79

SUMMA CUM LAUDE –

cumulative GPA of 3.8 – 4.00


TRANSCRIPTS

- ➡ **Classes and semester grades earned 9-12** make up the official high school transcript
- ➡ **Unweighted GPA** on a 4.0 scale
- ➡ **Class rank-** 82 in your senior class as of today (top 1/3 would be top 27 students)
- ➡ **6 semester transcript** is what you have now
- ➡ **7 semester transcript** available in January
- ➡ **8 semester transcript** will be your final one available the week after graduation

TRANSCRIPT REQUESTS

See Mrs. Parks in the Guidance Office to request any transcripts you might need for college, university, or scholarship applications. You may request more than one at a time!

If you go into your ACC account and print an unofficial transcript, Mrs. Parks will be happy to mail it with your BHS one to any colleges you need it sent to!



Looking ahead; what do you want to be or do when you grow up???

High school is a time to explore your passion, interests, things you are good at, etc.

We will continue to use **Career Cruising** this year!

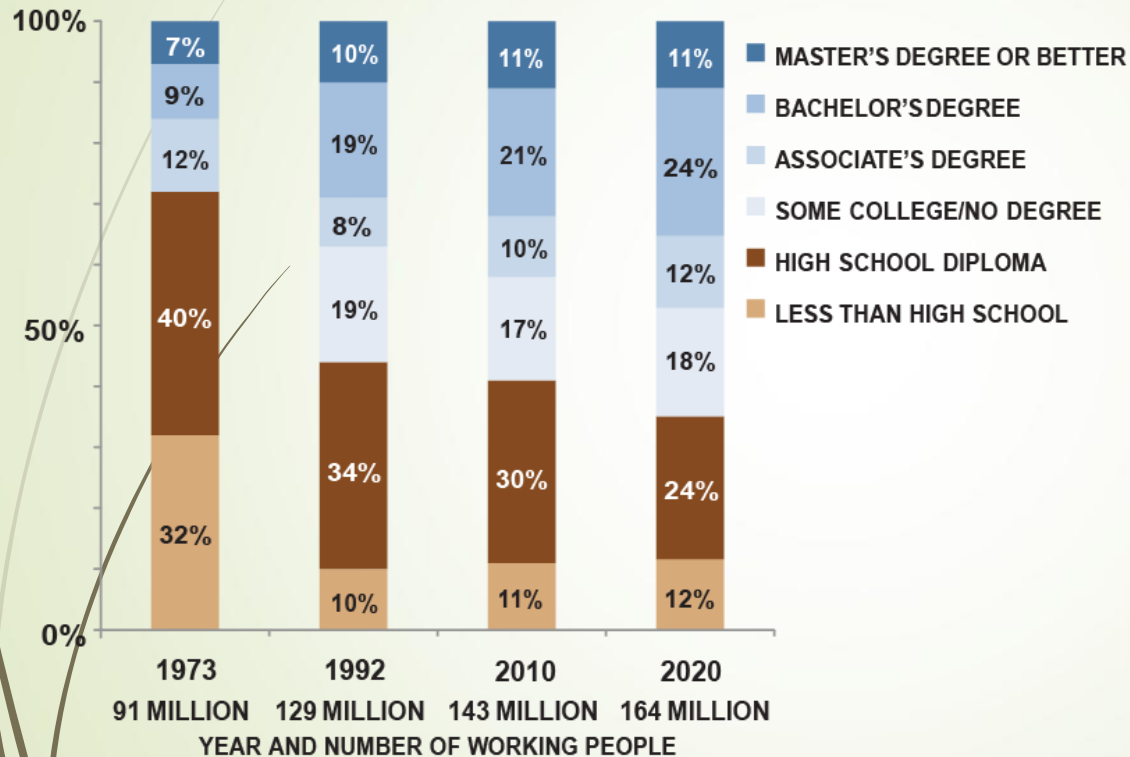
Determine best way to reach your career goal!

Is your goal to enter the **military**, enter the **workforce**, attend a **vocational/technical/trade school**, or attend a 2 or 4 year **college/university**???

2020 Workforce

USA

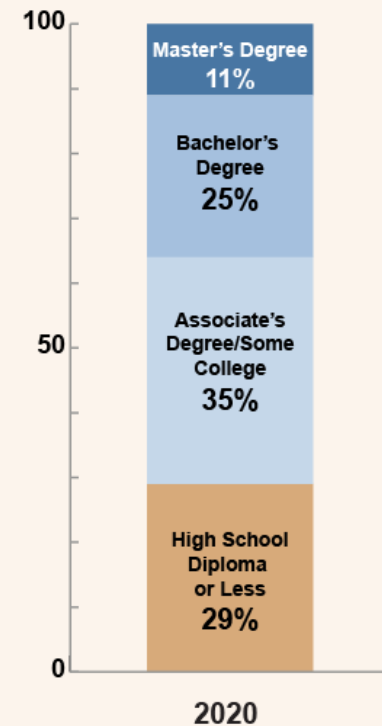
EDUCATIONAL DEMAND FOR JOBS, VARIOUS YEARS



Source: Georgetown Center on Education and the Workforce analysis
Note: Numbers may not sum to 100 percent due to rounding.

KANSAS

EDUCATIONAL DEMAND FOR JOBS, 2020



US SERVICE ACADEMIES

US Military Academy, West Point, New York

<http://www.westpoint.edu/SitePages/Home.aspx>

US Naval Academy, Annapolis, Maryland

<https://www.usna.edu/homepage.php>

US Air Force Academy, Denver, Colorado

<http://www.academyadmissions.com/?gclid=ClGZpMmLss4CFQEaaQodC6QDYA&gclsrc=aw.ds&dclid=CLKms8mLss4CFQx9AQodqlgN2w>

US SERVICE ACADEMIES

**US Merchant Marine Academy, Kings Point,
New York**

<https://www.usmma.edu/>

**US Coast Guard Academy, New London,
Connecticut**

<http://www.uscga.edu/>

- Senator Pat Roberts: www.roberts.senate.gov; the nomination information is available under the “Students” tab. Deadline is October 1st to submit all materials.
- Senator Jerry Moran: www.moran.senate.gov; the nomination information is available under the “Services” tab. Deadline is September 8th to submit all materials.
- Congresswoman Lynn Jenkins: <http://lynnjenkins.house.gov>; the nomination information is available under the “Constituent Services” tab. Call her office to get the submission deadline date.

HOW DO I CHOOSE?

Consider...

- Student population (size and diversity)
- Location
- Your comfort level/personality
- Major course of study
- Financial aid/support



***VISIT THE CAMPUS BEFORE MAKING
THE FINAL PLUNGE.....***

CAMPUS VISITS

You are allowed to make campus visits and not have them affect your attendance if . . .

you complete a Campus Visit Form PRIOR to your visit

and

you bring in proof of your visit within two school days of the visit!

TYPES of POST-SECONDARY SCHOOLS

- 
- ➡ **CAREER and TECHNICAL COLLEGES**
 - ➡ **COMMUNITY COLLEGES**
 - ➡ **PUBLIC COLLEGES and UNIVERSITIES**
 - ➡ **PRIVATE COLLEGES and UNIVERSITIES**
- 

THE COLLEGE SEARCH . . .

Run your own internet search by college name-

- ➡ check out admission criteria & deadlines, financial aid/scholarship information, majors offered, activities available, student population, total costs, set up campus visits, etc.

Sign up in the Guidance Office to visit with college reps when they come to our school – listen to the announcements!

- Read the *Wildcat Senior Scoop* for the latest in college, scholarship, and financial aid information. Posted online every Friday and e-mailed to those who request it.
- Talk to others who have attended the colleges you are considering.
- Attend **College/Career Planning Conference** at EHS in October and/or attend **Wrangler Rally Day** at FHTC on November 15th! Check out their programs! Also, talk to the **reps who are at our conferences** on September 17th!

NATIONAL COLLEGE FAIR - KANSAS CITY

October 16, 2018

Details and additional information can be found at
www.nationalcollegefairs.org.

You must pre-register by creating an account!!

You will receive a bar code that college representatives can scan to get your basic information. It will save you tons of time by not having to fill out numerous information cards!

Please take your barcode registration with you if you attend the fair! This barcode can be used at ANY college fair!



QUALIFIED ADMISSIONS

Students have to meet certain criteria/requirements order to qualify for admission to a Kansas Regents University

Emporia State Univ.

Fort Hays State Univ.

Kansas State Univ.

Pittsburg State Univ.

University of Kansas

Wichita State Univ.

QUALIFIED ADMISSIONS

All students must complete the core curriculum with a 2.0 GPA and meet ONE of the following:

21 on ACT OR

980 on the SAT (math and reading) OR

Top 1/3 of class

****KU has higher admissions standards;
see the bottom of your credit check form.**

TO BE ADMITTED . . .

For most colleges, a complete admissions file would include the following:

Application for admission

Application fee

High school transcript**

Standardized test scores (ACT and/or SAT)**



****Many colleges are now going to self-reporting of grades and test scores; requesting only a final copy of your transcript if you do attend their school!**



COMMON APPLICATION

www.commonapp.org



STANDARDIZED TESTING

Test scores can be used for . . .

college admission

course placement

scholarships



ACT (American College Test)

Test of choice for schools in the mid-west

English, Math, Science, Reading

Writing – optional (schools in Kansas do NOT require it)

September, October, December, February,
April, June, July* (BHS offers all test dates,
except for July)

Register online at www.actstudent.org



COST: \$50.50 for the ACT

\$67.00 for the ACT with Writing

**Late fee: additional \$30.00 if you miss the deadline
but register by the late fee deadline**

**Standby fee: additional \$53.00 if you miss both
deadlines but still want to test; there is a standby fee
deadline**

REGISTRATION TIDBITS

Upload or mail in a head and shoulders photo

USE YOUR LEGAL NAME!!! Name on ID and admission ticket must match!

On test day . . .

MUST have registration ticket and

MUST have photo ID

If you don't have both of those items,
you **CANNOT** test!

SAT Reasoning Test (Scholastic Aptitude Test)

Test of choice for schools on the east and west coasts and for schools who have more highly selective admission policies

Reading, Math, Writing/Language

October, November, December, January, March, May, and June

COST: \$47.40

COST with ESSAY: \$64.50

Register online at www.sat.collegeboard.com.

SAT Subject Tests

Some colleges require subject tests in addition to the ACT or the SAT Reasoning Test.

Check with your college or university to see if they also require the subject tests.

ENGLISH

Literature

HISTORY and SOCIAL STUDIES

US History

World History

MATH

Level 1

Level 2

LANGUAGES

Chinese

Korean

French

Latin

German

Spanish

Italian

Japanese

Modern Hebrew


SCIENCE

Biology

Chemistry

Physics

FEE WAIVERS



If you qualify for the free/reduced lunch program . . .

- you can take the ACT for free twice while an upper classman.
- you can take the SAT Reasoning test for free twice and take two SAT Subject Tests for free while an upper classman.
- you can send in a form asking the college or university to waive your application fee.

TEST PREP RESOURCES

SAT: www.sat.collegeboard.com

ACT: www.actstudent.org

BOTH: www.number2.com


www.testprepreview.com

www.testanxietytips.com

Test prep books at book stores

Test prep booklets that come with the registration packet

Evening sessions offered by BHS teachers



Kansas Public Higher Education & Training Program Search

This free search tool enables you to quickly search program and training opportunities available from the 32 Kansas public higher education institutions. The database includes information submitted by the state's public higher education institutions, which may not include all programs offered in all locations (including online or satellite campuses).

http://www.kansasregents.org/academic_affairs/program_search



Search

[Contact Us](#) | [Site Map](#) | [Quick Links](#)

[ABOUT](#) [ACADEMIC AFFAIRS](#) [DATA](#) [STUDENTS](#) [UNIVERSITIES & COLLEGES](#) [WORKFORCE DEVELOPMENT](#)

IN THIS SECTION:

- Credit for Prior Learning
- Developmental Education
- Employer Recognition
- Kansas EPSCoR/IDeA
- Michael Tilford Conference
- New Program Approval
- Performance Agreements

> Program Search

- Private/Out-of-State
- Qualified Admissions
- Reverse Transfer
- SARA
- Teacher Education Initiatives
- Transfer & Articulation
- Academic Calendars
- Adult Education

[Home](#) > [Academic Affairs](#) > Program Search

KANSAS PUBLIC HIGHER EDUCATION & TRAINING PROGRAM SEARCH

This free search tool enables you to quickly search program and training opportunities available from the 32 Kansas public higher education institutions. The database includes information submitted by the state's public higher education institutions, which may not include all programs offered in all locations (including online or satellite campuses).

If you cannot find a specific program at an institution using this search tool, please contact the institution(s) directly to learn more about educational opportunities available in your area.

[Click here](#) to review a PDF overview which outlines how to perform both a basic and advanced search using this tool, modify the display order, and how to download and print search results.

ENTER THE NAME OF THE DEGREE PROGRAM YOU WANT TO FIND (i.e. "nursing" or "engineering"):



- Private/Out-of-State
- Qualified Admissions
- Reverse Transfer
- SARA
- Teacher Education Initiatives
- Transfer & Articulation
- Academic Calendars
- Adult Education

ENTER THE NAME OF THE DEGREE PROGRAM YOU WANT TO FIND (i.e. "nursing" or "engineering"):

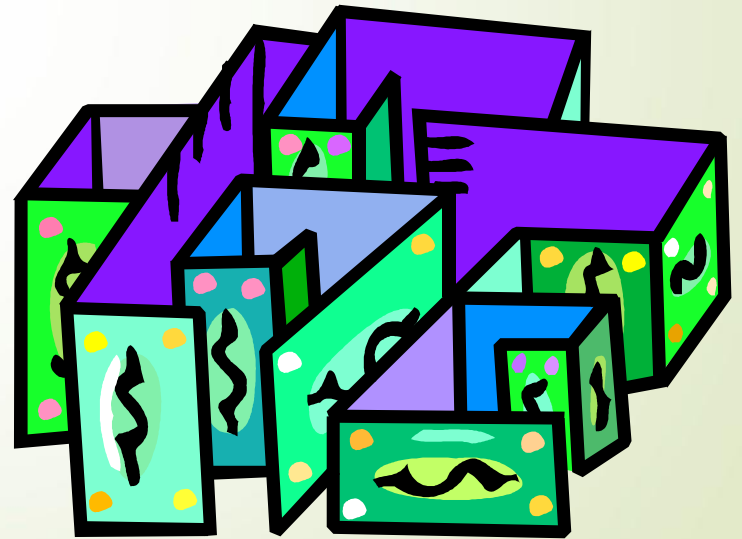
Show entries

Institution Name	Program Title	Award	Hours
<input type="text"/>	<input type="text"/>	<input type="text"/>	<input type="text"/>
Johnson County Community College	ASL-ENGLISH INTERPRETING PREPARATION	Associate Degree - AAS	65
University of Kansas	ENGLISH	Bachelor Degree - BGS	120
Fort Hays State University	ENGLISH	Master Degree - MA	30
Kansas State University	ENGLISH	Bachelor Degree - BA	120
Kansas State University	ENGLISH	Master Degree - MA	30
Washburn University	ENGLISH	Bachelor Degree - BA	124
Pittsburg State University	ENGLISH	Bachelor Degree - BSE	137
Emporia State University	ENGLISH	Bachelor Degree - BA	120
Emporia State University	ENGLISH	Bachelor Degree - BSE	120
University of Kansas	ENGLISH	Bachelor Degree - BA	120

Showing 1 to 10 of 29 entries

COLLEGE MONEY MAZE . . .

I've been admitted to college;
now how do I pay for it??



TOP FORMS of FINANCIAL ASSISTANCE:

- GRANTS- “FREE MONEY” - money given to you - mostly based on financial need
- SCHOLARSHIPS- “EARNED FREE MONEY” - money given to you because of exceptional academic achievement, an outstanding talent/skill, or financial need
- WORK STUDY- “Self-help” - money the student earns by working on campus
- LOANS- “Self/Parent Help” - borrowed money student/parents must repay

Grants, loans, and work study are awarded per the results of the FAFSA,
Free Application for Federal Student Aid

It must be submitted each year you want to apply for federal aid



SCHOLARSHIPS

Students are encouraged to apply for any and all scholarships they meet the criteria for.

As scholarship opportunities come into the Guidance Office, they will be relayed to the students via the bulletin, web site, Career Cruising, and/or Wildcat Senior Scoop!

STUDENT TIP:

Create a separate e-mail account just for scholarships and colleges! This will help you to find them more easily rather than having them mixed in with your personal e-mail messages!!

Don't forget to check it often!!

FAFSA – Free Application

for Federal Student Aid

➔ Can submit beginning October 1 of your senior year

➔ Paper application or online at www.fafsa.ed.gov

➔ If applying online, get a Federal Student Aid ID (FSA ID) for your electronic signature
<https://fsaid.ed.gov/npas/index.htm>

➔ Student and at least one parent need an FSA ID number



BHS will host **Financial Aid Night on
Monday, **October 1st**, 6 pm,
BHS multimedia room!**

**There will be a short 7-minute
youtube video, then financial aid
officers will be here to help you
actually file the FAFSA!! More
details coming soon!**

SELECTIVE SERVICES

MALES only -


If you do not register with the Selective Service within thirty days of your 18th birthday, you could be denied federal financial aid.

Register through the FAFSA, at www.sss.gov, or pick up a paper form from the post office

APPLY FOR ADMISSION EARLY!!!



It is best to apply as soon as possible so you receive information about Residential Life, Financial Aid, Scholarships, and Pre-Enrollment Events as soon as it is available!





EMPORIA STATE UNIVERSITY

Complete application for admission

**Complete application for scholarships –
priority deadline is February 1st.**

www.emporia.edu



FORT HAYS STATE UNIVERSITY

PRIORITY SCHOLARSHIP DEADLINE:

November 15

FINAL SCHOLARSHIP DEADLINE: February 15

Complete application for admission

Complete application for scholarships

www.fhsu.edu

KANSAS STATE UNIVERSITY

**PRIORITY DEADLINE for KSU's premiere
scholarships: NOVEMBER 1**

**Complete combined application for
admission and scholarships**

**The last ACT they accept for scholarship
purposes is the October test date.**

www.k-state.edu



PITTSBURG STATE UNIVERSITY

SCHOLARSHIP DEADLINE: February 1

Complete application for admission

Complete application for scholarships

www.pittstate.edu



UNIVERSITY of KANSAS

SCHOLARSHIP DEADLINE: November 1

The last ACT they accept for scholarship purposes is the December test date.

Details can be found at

<https://admissions.ku.edu/tuition-scholarship/freshman>



WICHITA STATE UNIVERSITY

WSU begins awarding scholarship money as freshman applications come in!

[http://webs.wichita.edu/?u=FINAID SCHOLARSHIPS&p=/incoming/](http://webs.wichita.edu/?u=FINAID_SCHOLARSHIPS&p=/incoming/)

WSU – Distinguished Scholarship Invitational (DSI)

To participate, you must:

- have a 3.50 grade point average OR
- earn a 27 or higher composite on the ACT 1280 (*taken on the SAT (critical reading and math sections only)*) OR
- be in the top 10 percent of your senior class

AND

- Be admitted to WSU by **OCTOBER 15, 2018**. Students should visit wichita.edu/apply to complete the admissions application.
- Submit scholarship competition materials by **NOVEMBER 1, 2018**.



WSU - DSI Competition

\$48,000 Clay Barton Scholarship, business major

\$60,000 Harry Gore Scholarship for leadership and academics

Ten \$28,000 Wallace Scholarships, engineering majors

Many more!

Competition will be held November 17, 2018.

<https://www.wichita.edu/admissions/ugrad/dsi/generalinfo.php>



WASHBURN UNIVERSITY

Scholarship deadline: December 1, but money is awarded on a first-come, first-serve basis

Complete application for admission

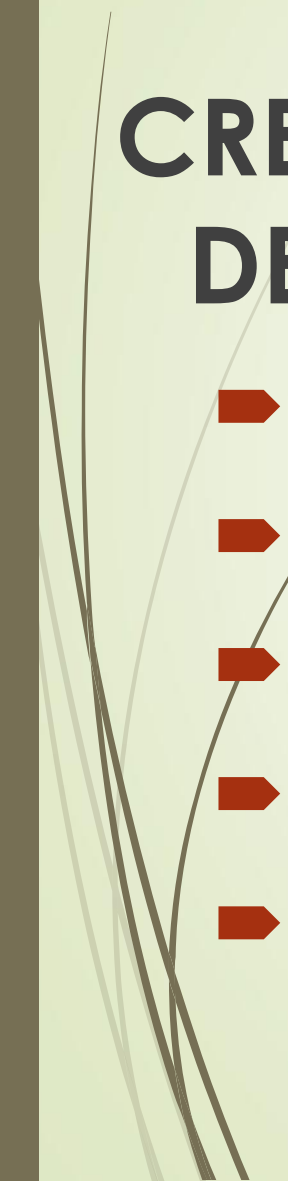
Complete scholarship application after you have been admitted

www.washburn.edu

THE GAME PLAN...



CREATE a MASTER CALENDAR of DEADLINES and CHECK IT OFTEN!

- College applications
 - Test dates and registration deadlines
 - Scholarship applications
 - Housing applications
 - Financial aid
- 

THE GAME PLAN...

- **Narrow college selection** and **request** college applications, financial aid, scholarship, and housing applications
- **Visit** the college before making a final decision
- Prepare your **RESUME'**
- Take the **ACT**- September, October or December
- Take the **SAT**- October, November, December
- **ASK for letters of recommendation** from teachers, coaches, counselor, administrators, and community contacts (gather at least 3-5)
- **FINALIZE** college essay - personal statement
- **READ** the *Senior Scoop* for college, scholarship, and financial aid information



KEEPING TRACK . . .

Get a wide 3-ring notebook and several page protectors

SECTIONS:

Senior Scoop

College Apps

Scholarship Apps

Resume'

Letters of Recommendation

Continue to participate in Community Service activities! These activities could be the difference between getting a scholarship or not!



www.usd244ks.org

**schools, Burlington High School,
Guidance Center**

Just for Juniors

Senior Scoop

Scholarships

Daily Bulletin

Questions/Answers Useful Links

Power Point Presentations



***Don't hesitate to contact me if
you need anything!***

Mrs. Bolen

dbolen@usd244ks.org

364-8672, ext 4005