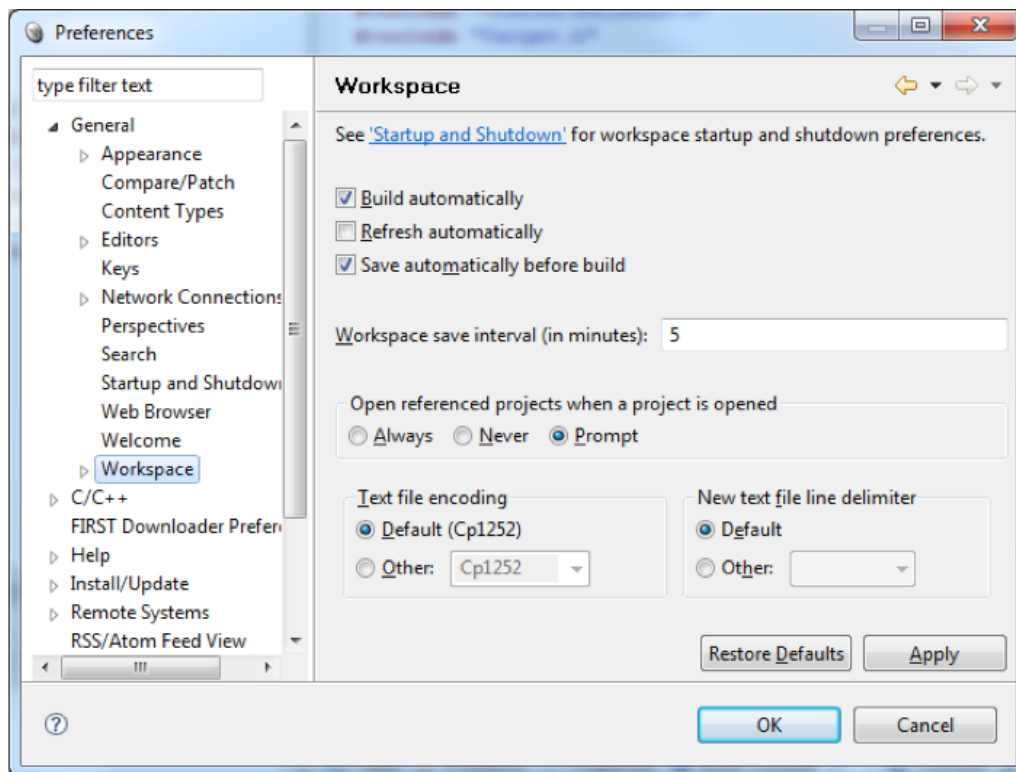


Setting the project to automatically build in Wind River Workbench

Setting the project to automatically build in Wind River Workbench

WindRiver Workbench can automatically rebuild projects as files are edited and saved. This is often convenient to get more immediate feedback as the project is changed.

Enabling Automatic Building of a project



Another way of building the project is to use Workbench's "automatic rebuild" feature. It will rebuild the project automatically whenever you save a source file. To enable this feature:

1. Select Window > Preferences.
2. In the Preferences panel, expand "General," then click "Workspace," and check the "Build automatically" option. Quickly save an edited file via the Ctrl-S keyboard shortcut, or save all open files at once using the Save All shortcut, Ctrl-Shift-S.

Setting the project to automatically build in Wind River Workbench

Tip: Also turn on "Save automatically before build." Then Workbench will save your changes to all files before building. Otherwise it might build with only some of your edits, which doesn't work very well.