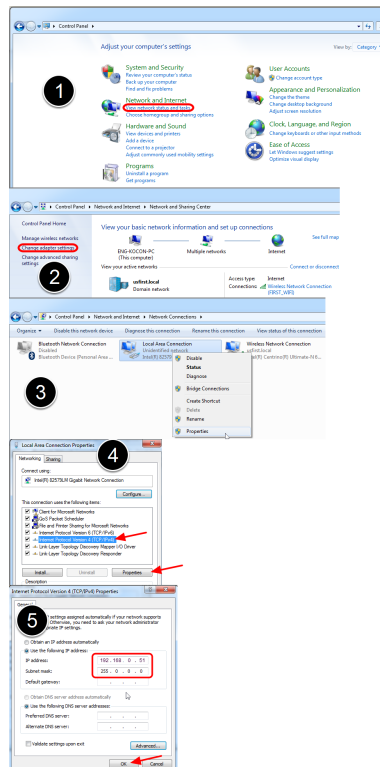


Manual Radio Configuration

This article describes how to manually configure a DAP1522 Rev B. for a competition

Configure computer IP



1. Click Start >> Control Panel to open the Control Panel. Then click View network status and tasks.
2. Select Change Adapter Settings.
3. Right-click on the appropriate adapter (typically Local Area Connection) and select Properties.
4. Click on the Internet Protocol Version 4 line to highlight it, then click Properties.
5. Select Use the following IP address, then enter the IP 192.168.0.51 and the Subnet Mask 255.0.0.0. Then click OK.

Manual Radio Configuration

Reset the DAP1522

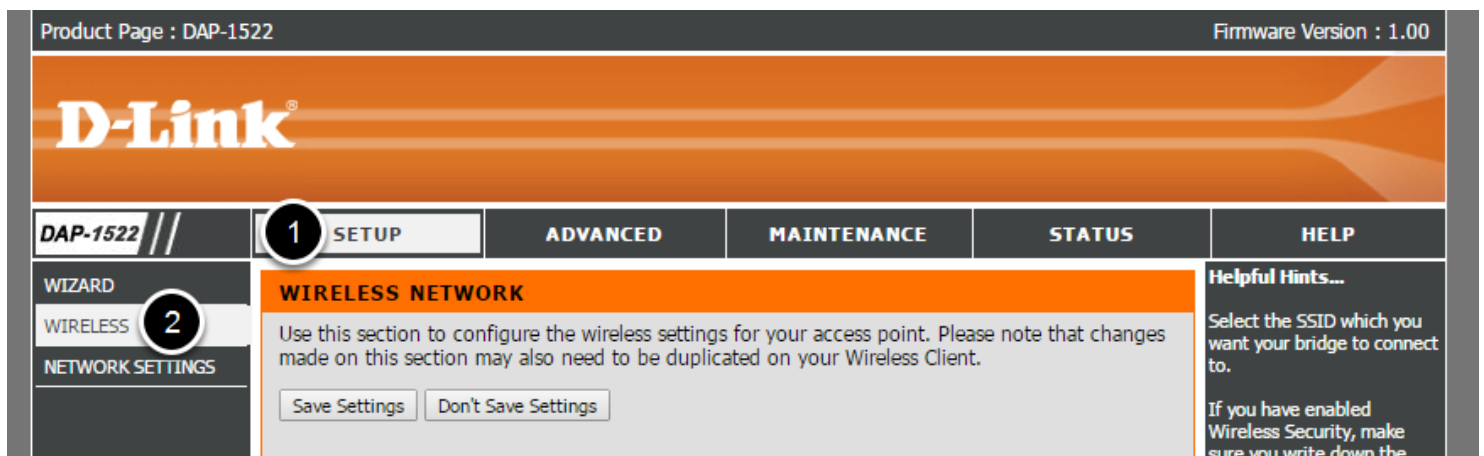


Reset your DAP1522 to factory settings using the following procedure:

1. Switch your D-Link unit to **Bridge** mode using the switch on the back (the wireless bridge should always be in bridge mode at competition)
2. Plug in the power and Ethernet connections
3. Wait for the either the orange Bridge light or blue Access Point light to begin flashing
4. Hold the reset button (on the back of the unit) for 10 seconds then release
5. Wait for the light to stop flashing (this signals the wireless bridge is starting to reset)
6. Wait for the light to resume flashing, your wireless bridge is now reset

Connect the wireless bridge to your computer using an Ethernet cable

Connect to the Bridge



Start Internet Explorer and type in an address of 192.168.0.50

- Username = admin

Manual Radio Configuration

- Password = blank

Click on the Setup tab on the top menu bar. Click on the Wireless tab on the left side of the page.

Configure Wireless Settings

The screenshot shows the 'WIRELESS NETWORK' configuration page. At the top, there's a header 'WIRELESS NETWORK' with a sub-note: 'Use this section to configure the wireless settings for your access point. Please note that changes made on this section may also need to be duplicated on your Wireless Client.' Below this are 'Save Settings' and 'Don't Save Settings' buttons. A circled '6' points to the 'Save Settings' button. The main section is 'WIRELESS NETWORK SETTINGS'. It includes: 'Wireless Mode' set to 'Bridge Mode' with a 'Site Survey' button; 'Enable Wireless' checked; 'Wireless Network Name' set to '9999' (circled '1'); '802.11 Band' set to '2.4GHz/5GHz'; '802.11 Mode' set to 'Mixed 802.11 abgn'; 'Enable Auto Channel Scan' unchecked; 'Wireless Channel' set to '6'; 'Transmission Rate' set to 'Best(automatic)'; 'Channel Width' set to '20 MHz'; and 'Visibility Status' set to 'Visible'. Below this is 'WIRELESS SECURITY MODE' with 'Security Mode' set to 'WPA-Personal' (circled '2'). The 'WPA' section has 'WPA Mode' set to 'WPA2 Only' (circled '3') and 'Cipher Type' set to 'AES'. The 'PRE-SHARED KEY' section has 'Passphrase' set to '9999WPAKey' (circled '4'). The 'WI-FI PROTECTED SETUP (ALSO CALLED WCN 2.0 IN WINDOWS VISTA)' section has 'Enable' unchecked (circled '5').

Configure the wireless settings:

1. Set the **Wireless Network Name** to your team number.
2. Set the **Wireless Security Mode** to **WPA-Personal**.
3. Set the **WPA Mode** to **WPA2 Only** and the **Cipher Type** to **AES**
4. Set the **Passphrase** to the WPA key for the event (obtain from the FTA)
5. Uncheck the box to disable **Wi-Fi Protected Setup**
6. Click **Save Settings**

Manual Radio Configuration

Configure Network Settings

LAN SETTINGS

Use this section to configure the internal network settings of your access point. The IP Address that is configured here is the IP Address that you use to access the Web-based management interface. If you change the IP Address here, you may need to adjust your PC's network settings to access the network again.

LAN Connection Type :	Static IP	Set the IP address to 10.xx.yy.1 where <u>xyxy</u> is your team number
Access Point IP Address :	10.19.95.1	
Subnet Mask :	255.0.0.0	Set the Subnet Mask to 255.0.0.0
Default Gateway :	10.19.95.4	Set the Default Gateway to 10.xx.yy.4

Click Network Settings from the left sidebar.

1. Set the IP to 10.xx.yy.1 where XYYY is your team number
2. Set the Subnet Mask to 255.0.0.0
3. Set the Default Gateway to 10.xx.yy.4
4. Click Save Settings