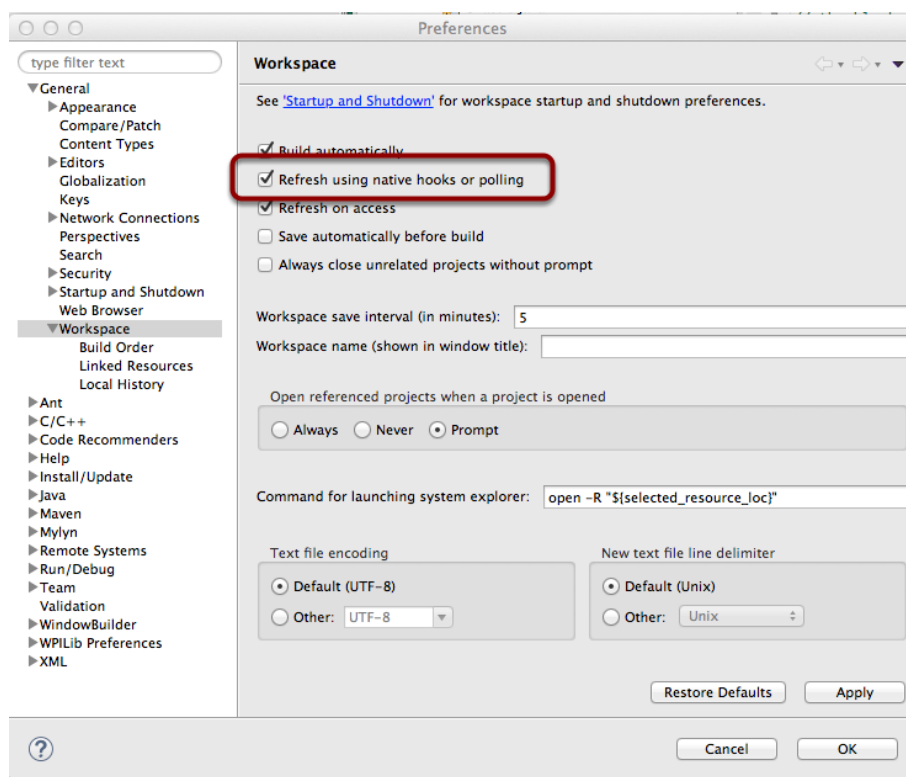


Setting up the robot project

Setting up the robot project

The RobotBuilder program has some default properties that need to be set up so the generated program and other generated files work properly. This setup information is stored in the properties for robot description (the first line).

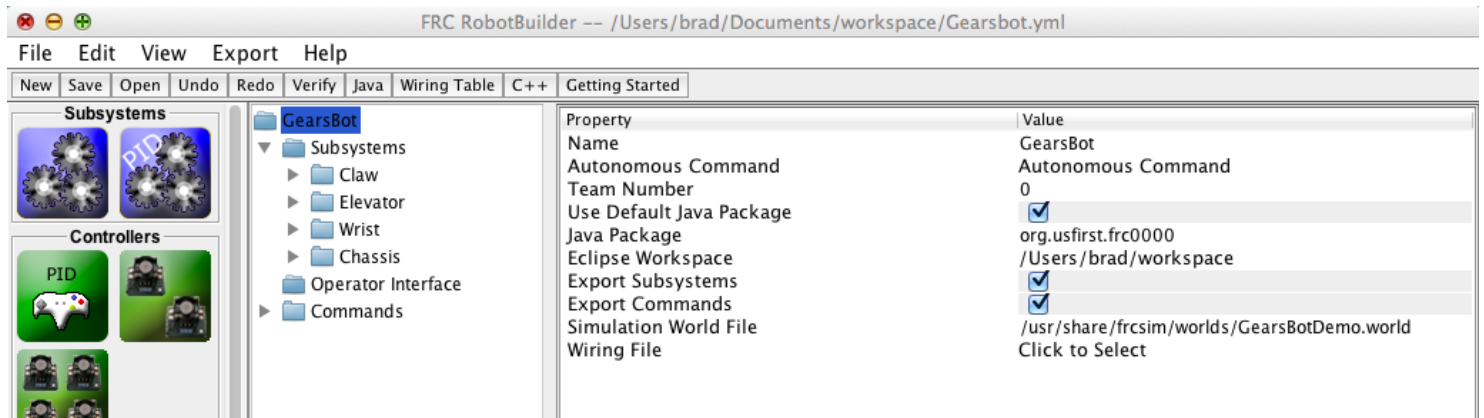
Using RobotBuilder with Eclipse



When using RobotBuilder files are saved inside the RobotBuilder interface and also from the Eclipse interface. It is important to keep the files in sync. To get eclipse to automatically notice that RobotBuilder has saved new versions of the project files and automatically load them check the "Refresh using native hooks or polling" option in the Workspace preferences under General as shown here. With this option checked, the source files open in the Eclipse editor will automatically be refreshed when RobotBuilder generates new files.

Setting up the robot project

Robot project properties



The properties that describe the robot are:

Name - The name of the robot project that is created

Autonomous Command - the command that will run by default when the program is placed in autonomous mode

Team Number - the team number is used for creating the package names

Java Project - The folder that the java project is generated into when Export to Java is selected

Use Default Java Package - If checked RobotBuilder will use the default package (org.usfirst.frc####). Otherwise you can specify a custom package name to be used.

Java Package - The name of the generated Java package used when generating the project code

Eclipse Workspace - The location of the Eclipse workspace that your project should be saved to

Export Subsystems - Checked if RobotBuilder should export the Subsystem classes from your project

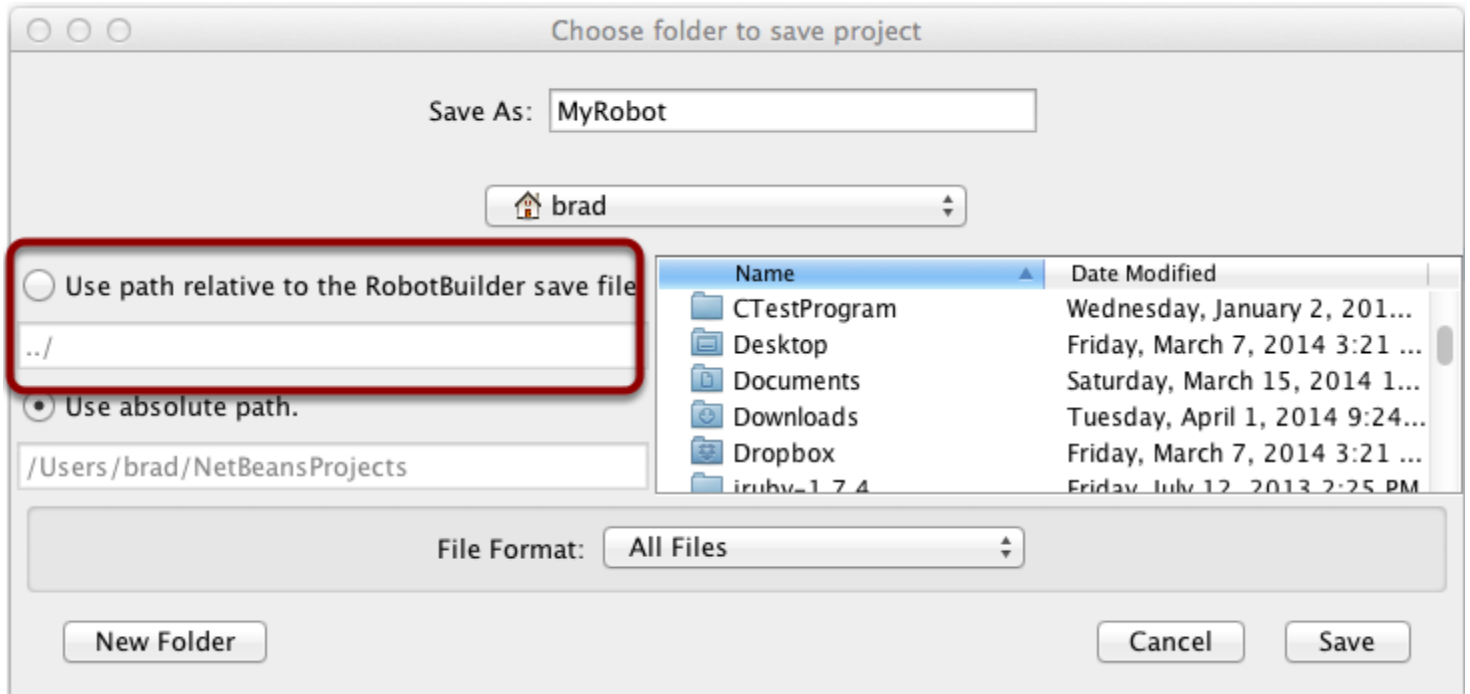
Export Commands - Checked if RobotBuilder should export the Command classes from your project

Simulation World File - The World File that is used for simulation of your robot project

Wiring File - the location of the html file that contains the wiring diagram for your robot

Setting up the robot project

Using source control with the RobotBuilder project



When using source control the project will typically be used on a number of computers and the path to the project directory might be different from one users computer to another. If the RobotBuilder project file is stored using an absolute path, it will typically contain the user name and won't be usable across multiple computers. To make this work, select "relative path" and specify the path as an directory offset from the project files. In the above example, the project file is stored in the folder just above the project files in the file hierarchy. In this case, the user name is not part of the path and it will be portable across all of your computers.