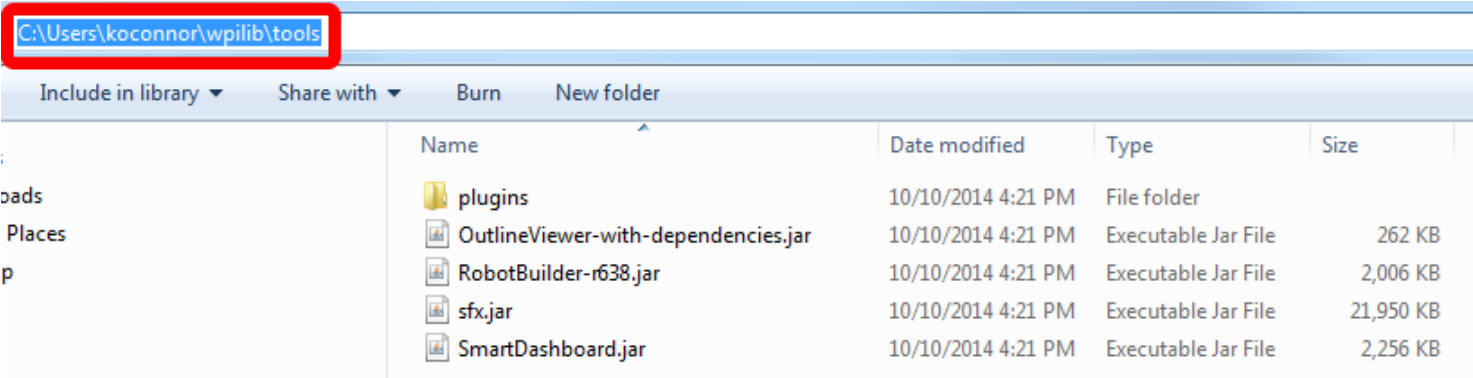


Setting SFX to Launch with the DS

The C++ and Java Dashboard buttons in the Driver Station link to the previously existing SmartDashboard for the 2015 season. This article details how to set up the DS to launch SFX instead.

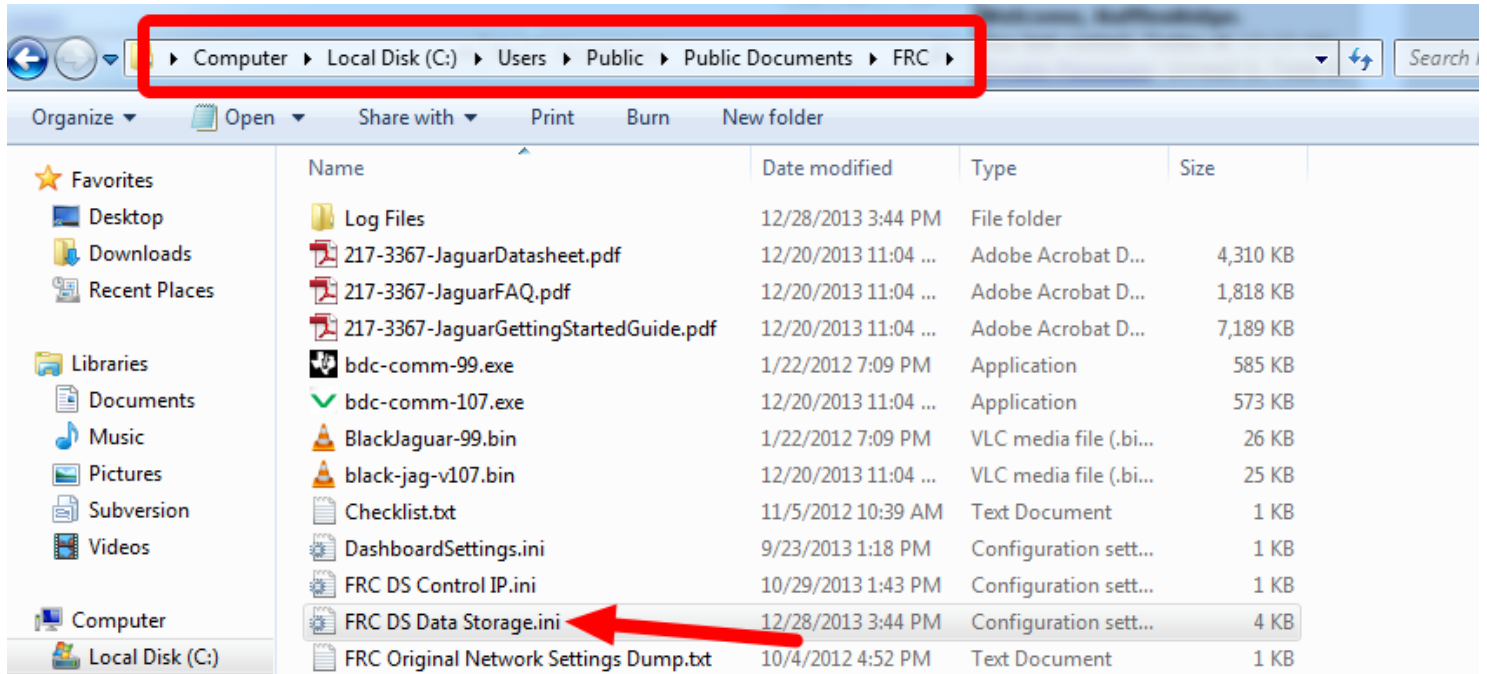
Locate SFX



Locate the path to the SFX jar file on your system. It is likely C:\Users\USERNAME\wpilib\tools. Note the full path to the sfx.jar file this will be needed later.

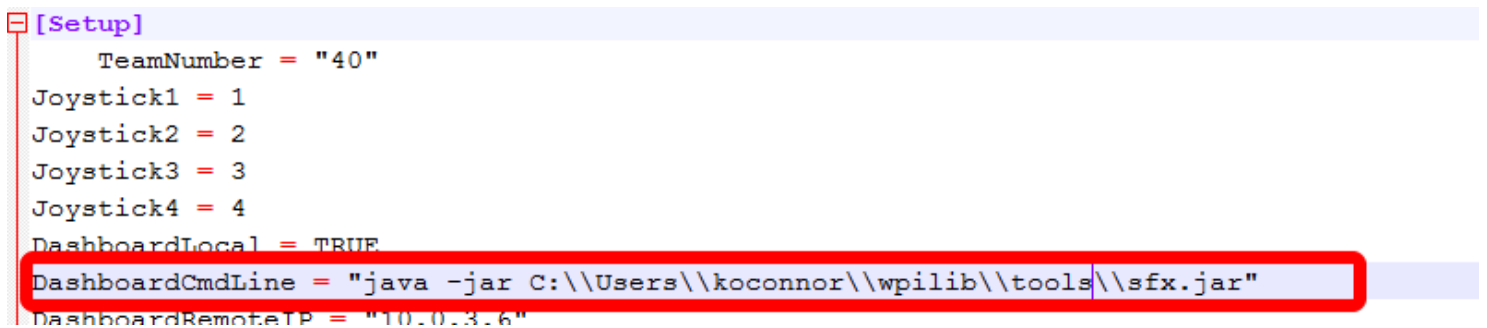
Setting SFX to Launch with the DS

Open FRC DS Data Storage



Make sure the Driver Station is not open, then locate and open FRC DS Data Storage.ini. On Windows 7 machines this will be in the C:\Users\Public\Documents\FRC folder.

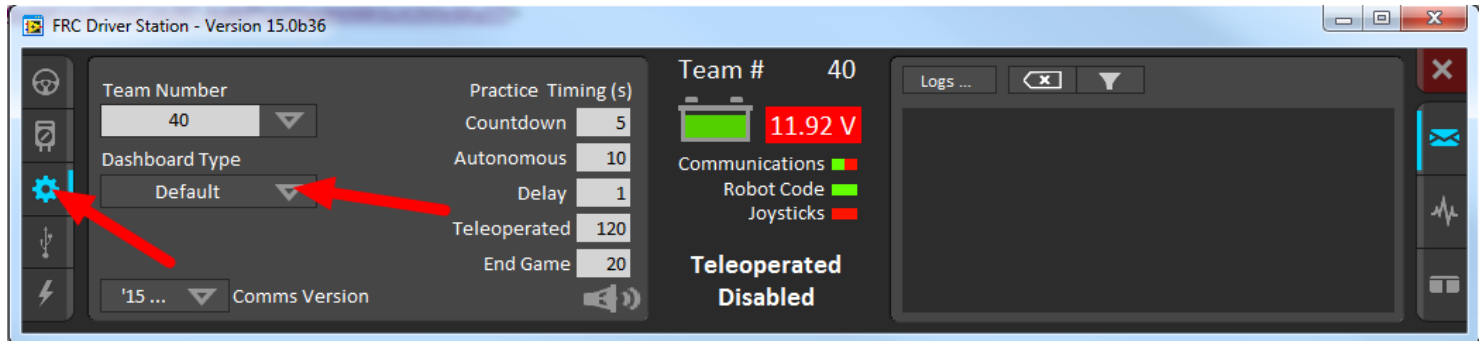
Set Dashboard path



Locate the line that starts with DashboardCmdLine = and replace the value in quotes with "java -jar SFXPATH" where SFXPATH is the path you noted earlier with all backspaces doubled. An example of this for the user "koconnor" is shown in the image above. Save and close the document.

Setting SFX to Launch with the DS

Set the DS Dashboard Setting



Launch the Driver Station and select the Setup tab. Change the Dashboard Type setting to Default. This should launch the SFX dashboard. If it does not try closing the DS and re-opening.

Troubleshooting

If the SFX Dashboard does not launch with the DS after following the above steps, try the following:

1. Verify that SFX launches when you double click on the JAR file.
2. Return to the DS Data Storage file and verify that the path there is correct.
3. Open a Command Prompt by clicking Start and typing "cmd" in the box, then clicking Enter. Copy the path from the DS Data Storage file (including the "java -jar" part) and paste it into the Command Prompt by right-clicking and selecting Paste. Press Enter and verify that SFX launches. If it does not you may have an issue with your Java version or the environment variables which point to the Java install. If this is the case it is recommended to uninstall Java and complete a fresh install of [Java Runtime Engine version 7](#).