

Installing LabVIEW for FRC 2018 (LabVIEW only)

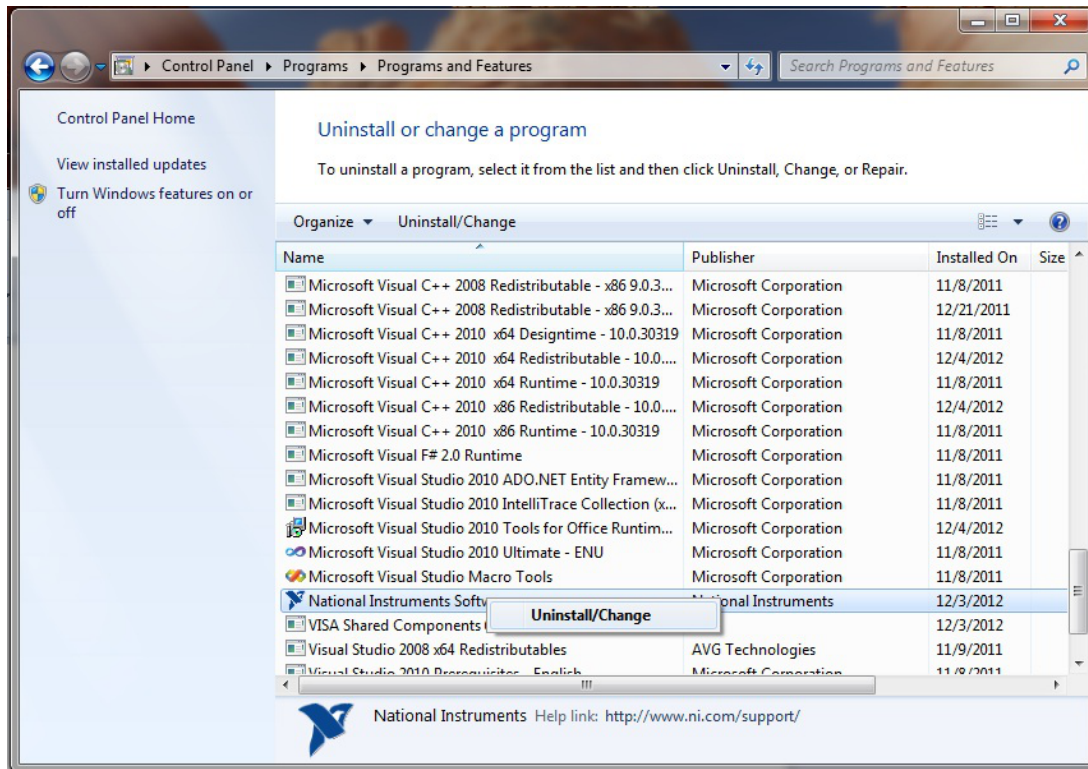


Note: This installation is for teams programming in LabVIEW or using NI Vision Assistant only. C++ and Java teams not using these features do not need to install from the DVD.

Download and installation times will vary widely with computer and internet connection specifications, however note that this process involves a large file download and installation and will likely take at least an hour to complete.

Installing LabVIEW for FRC 2018 (LabVIEW only)

Uninstall Old Versions (Recommended)

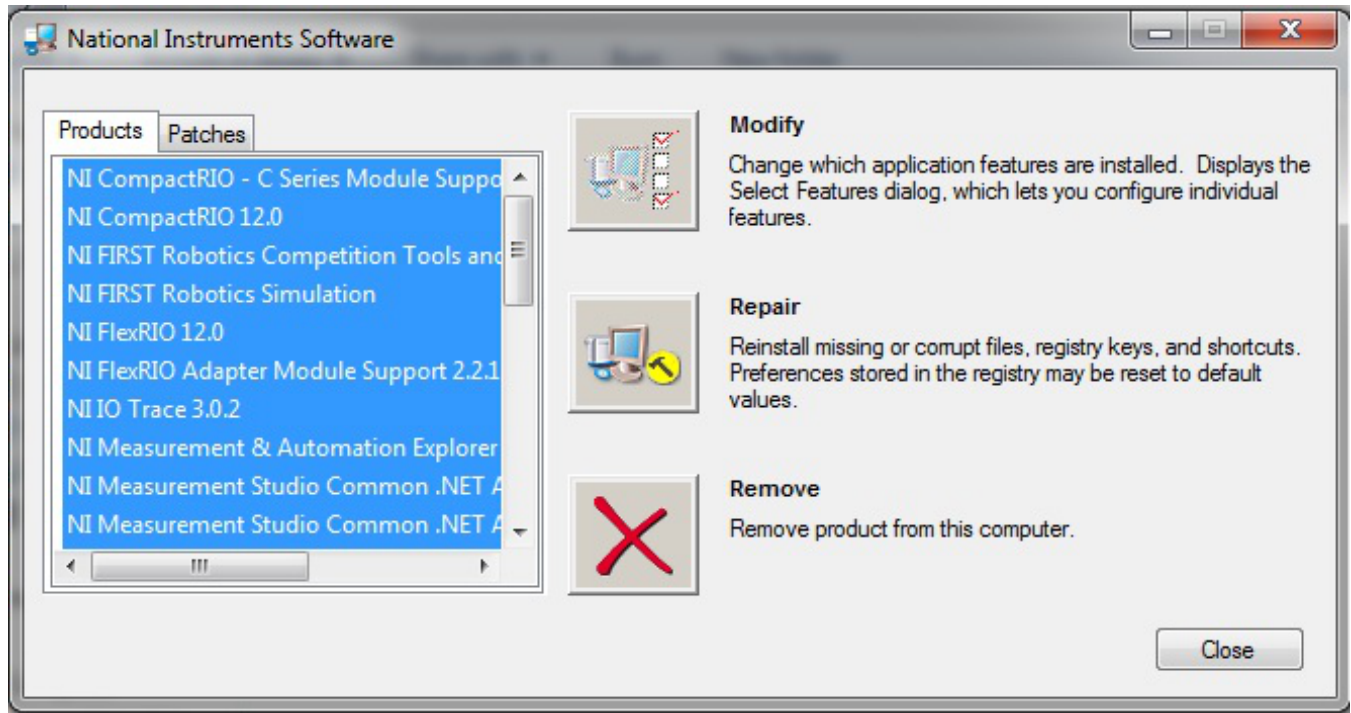


NOTE: If you wish to keep programming cRIOs you will need to maintain an install of LabVIEW for FRC 2014. The LabVIEW for FRC 2014 license has been extended. While these versions should be able to co-exist on a single computer, this is not a configuration that has been extensively tested.

Before installing the new version of LabVIEW it is recommended to remove any old versions. The new version will likely co-exist with the old version, but all testing has been done with FRC 2017 only. Make sure to back up any team code located in the "User\LabVIEW Data" directory before uninstalling. Then click Start >> Control Panel >> Uninstall a Program. Locate the entry labeled "National Instruments Software", right-click on it and select Uninstall/Change.

Installing LabVIEW for FRC 2018 (LabVIEW only)

Select Components to Uninstall



In the left pane of the dialog box that appears, select all entries. The easiest way to do this is to click the top entry to highlight it, then scroll down to the bottom entry, press and hold shift and click on the last entry then release shift. Click **Remove**. Wait for the uninstaller to complete and reboot if prompted.

Getting LabVIEW Installer

Either locate and insert the LabVIEW DVD or download the LabVIEW 2018 installer from <http://www.ni.com/download/labview-for-frc-17.0/7185/en/>

If downloaded, right click on the downloaded file (NI_FRC2018.zip) and select Extract All.

Note: This is a large download (~4GB). It is recommended to use a fast internet connection and to use the NI Downloader to allow the download to resume if interrupted.

Installing LabVIEW for FRC 2018 (LabVIEW only)

Installing LabVIEW

National Instruments LabVIEW requires a license. Each season's license is active until January 31st of the following year (e.g. the license for the 2018 season expires on January 31, 2019)

Teams are permitted to install the software on as many team computers as needed, subject to the restrictions and license terms that accompany the applicable software, and provided that only team members or mentors use the software, and solely for FRC. Rights to use LabVIEW are governed solely by the terms of the license agreements that are shown during the installation of the applicable software.

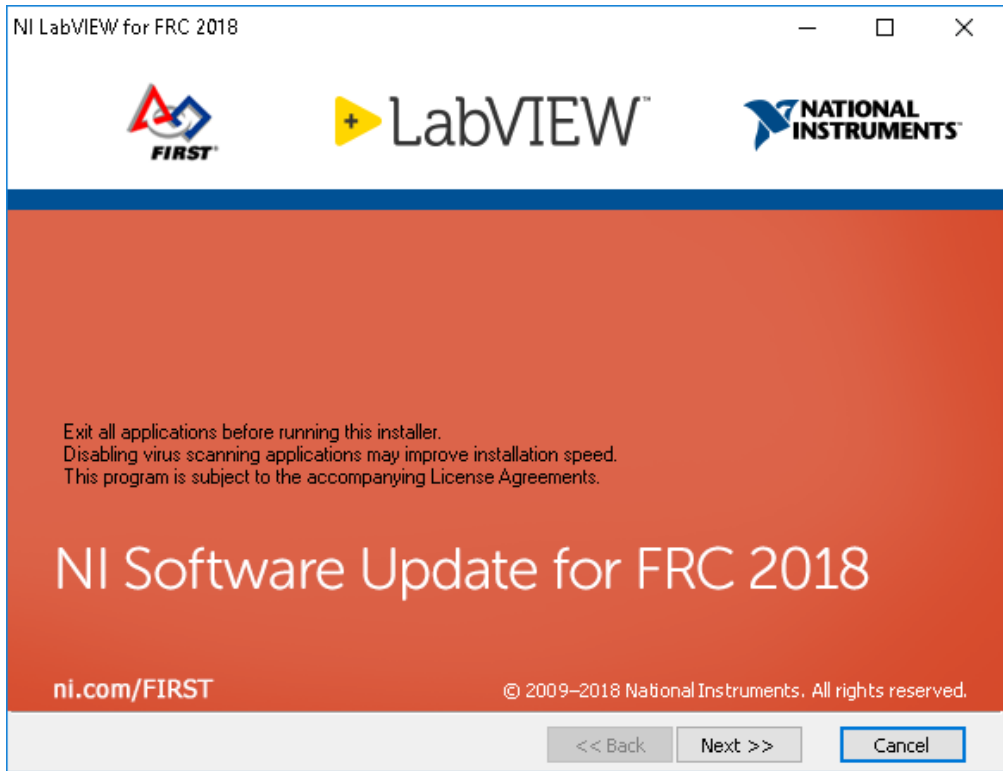
Welcome



Double click on **autorun.exe** to launch the installer. If prompted to allow changes click Yes. To install LabVIEW to program your FRC robot, click the top option **Install Everything for LabVIEW Development**. To install only NI Vision Assistant for use with C++ or Java, click **Install Only NI Vision Development Module**.

Installing LabVIEW for FRC 2018 (LabVIEW only)

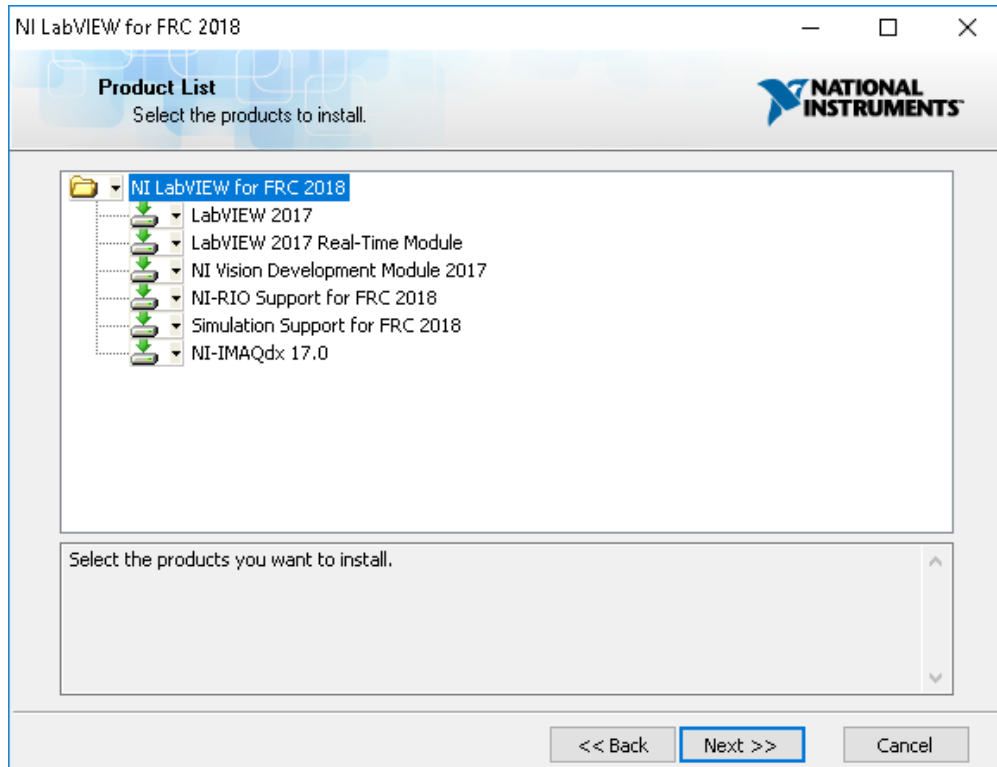
Warnings



Click "Next"

Installing LabVIEW for FRC 2018 (LabVIEW only)

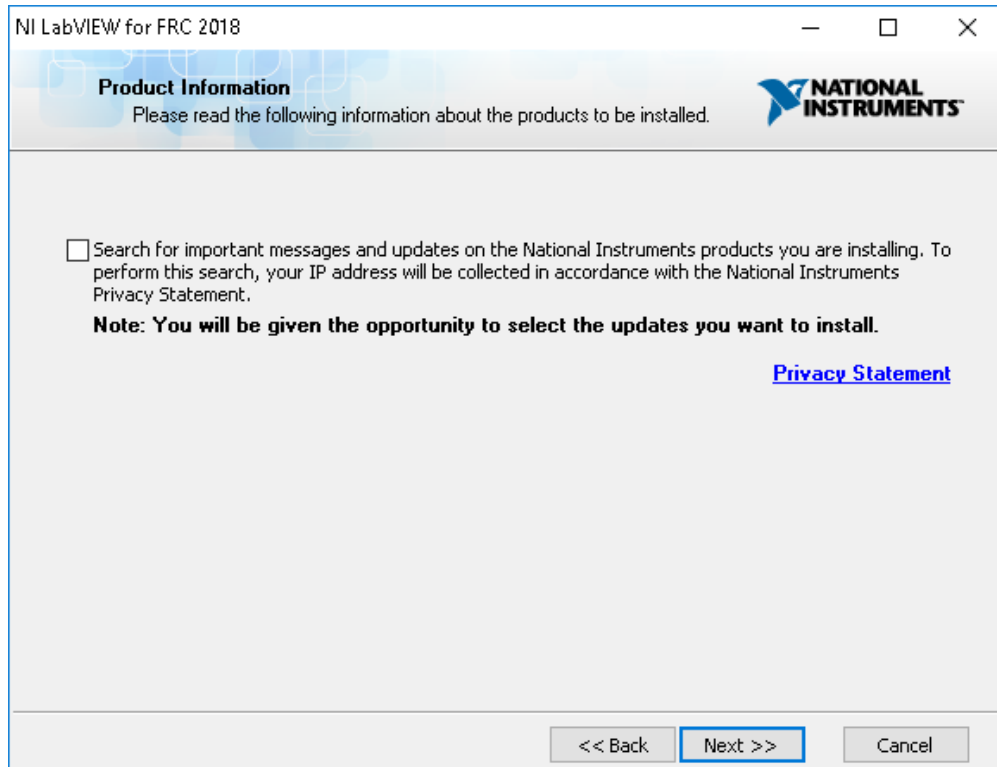
Product List



Click "Next"

Installing LabVIEW for FRC 2018 (LabVIEW only)

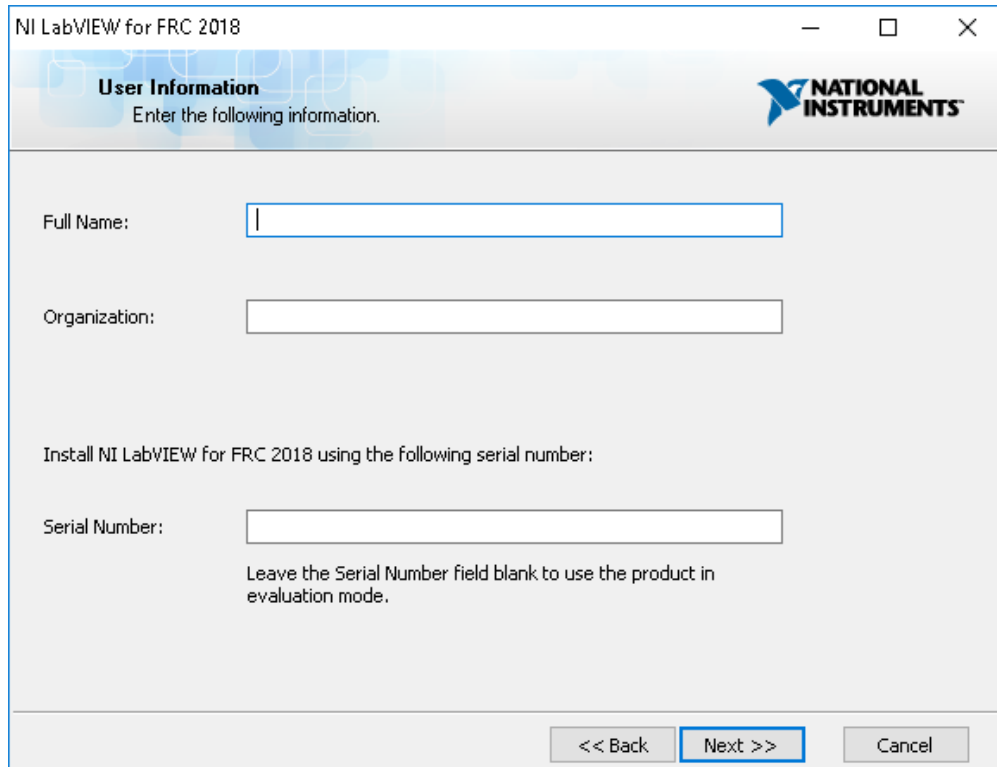
Product Information



Un-check the box, then click "Next"

Installing LabVIEW for FRC 2018 (LabVIEW only)

User Information

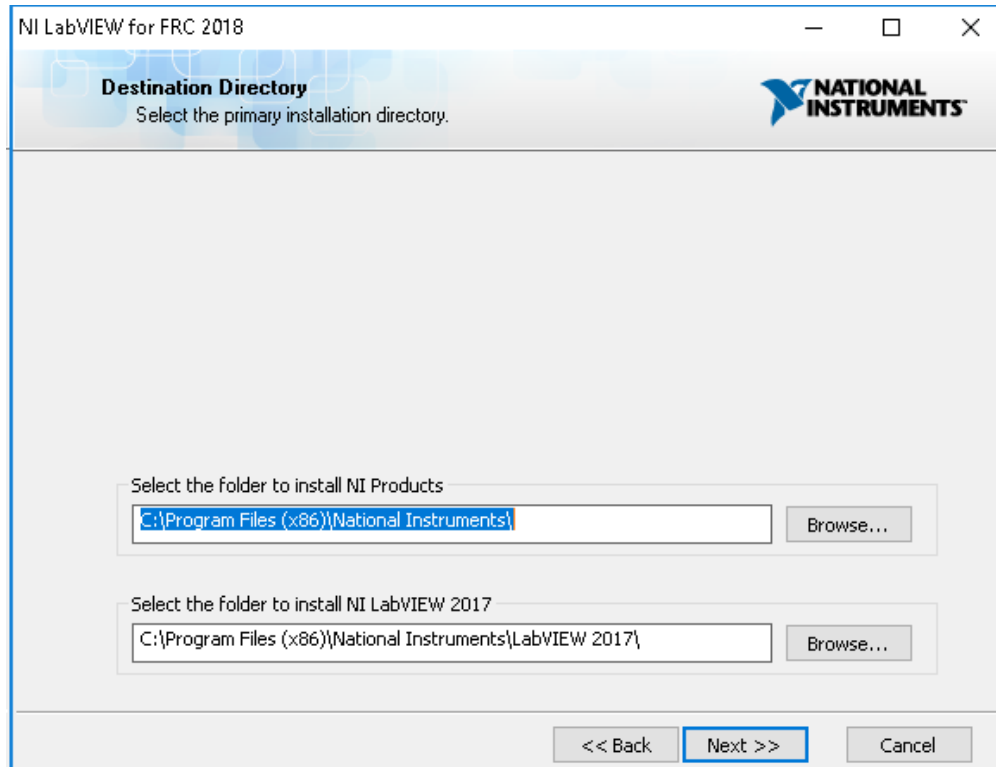


The image shows a Windows-style dialog box titled "NI LabVIEW for FRC 2018". The dialog has a header bar with the title and standard window controls (minimize, maximize, close). Below the header, the text "User Information" is displayed in bold, followed by "Enter the following information." and the National Instruments logo. The main area contains three input fields: "Full Name:" with a text box, "Organization:" with a text box, and "Serial Number:" with a text box. Below the "Serial Number" field, there is a note: "Leave the Serial Number field blank to use the product in evaluation mode." At the bottom of the dialog, there are three buttons: "<< Back", "Next >>" (which is highlighted with a blue border), and "Cancel".

Enter name, organization, and the serial number from the LabVIEW packet in your KOP. Click "Next". If you cannot find your serial number, please reach out to National Instruments at www.ni.com/frc/needhelp.

Installing LabVIEW for FRC 2018 (LabVIEW only)

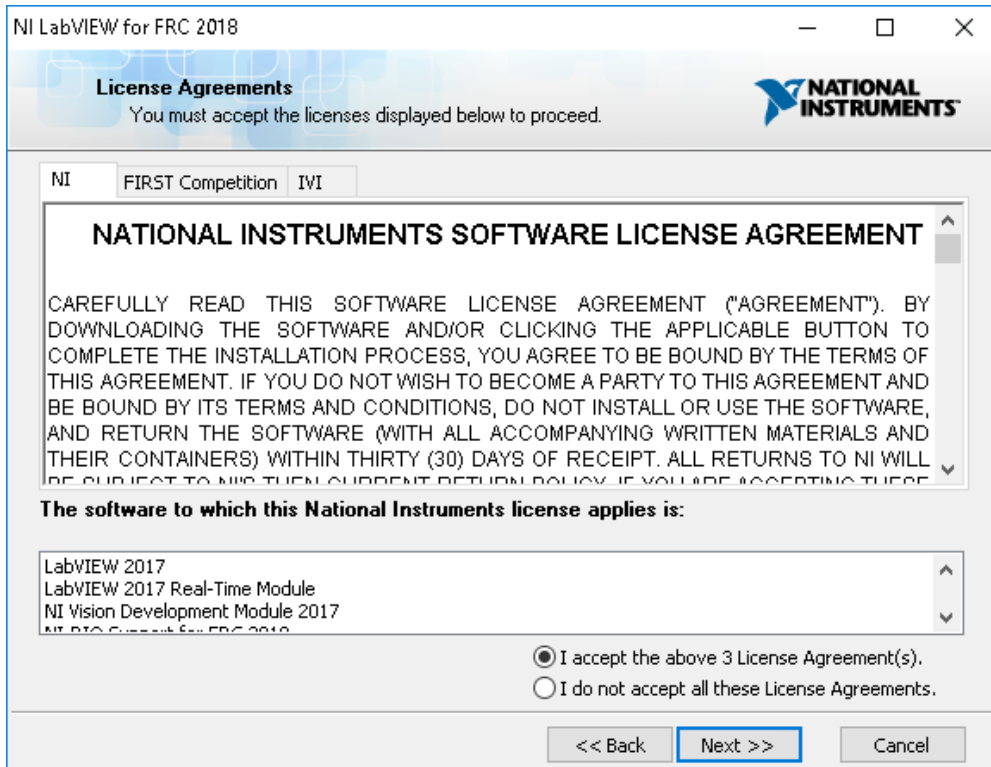
Destination Directory



Click "Next"

Installing LabVIEW for FRC 2018 (LabVIEW only)

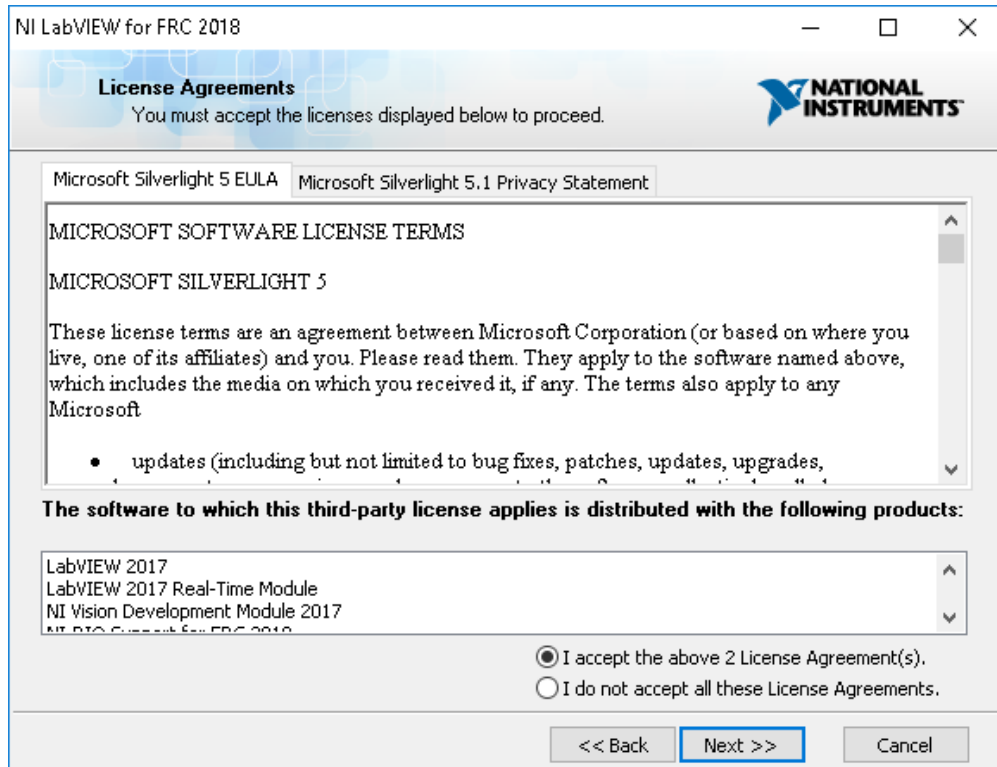
License Agreements (1)



Check "I accept..." then Click "Next"

Installing LabVIEW for FRC 2018 (LabVIEW only)

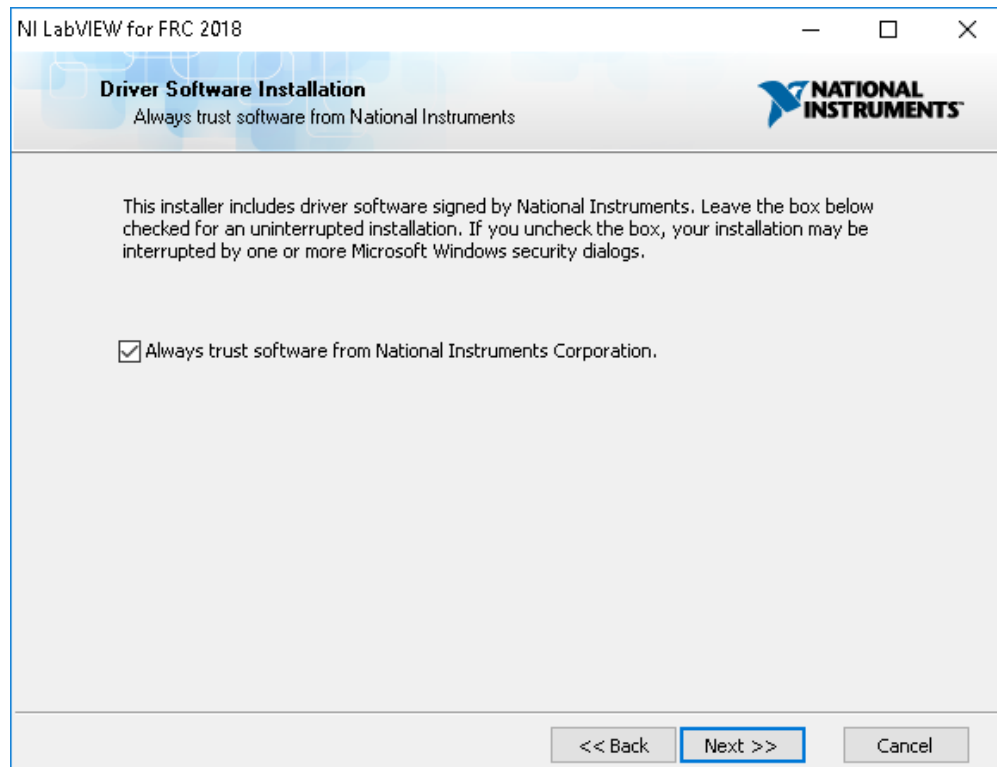
License Agreements (2)



Check "I accept..." then Click "Next"

Installing LabVIEW for FRC 2018 (LabVIEW only)

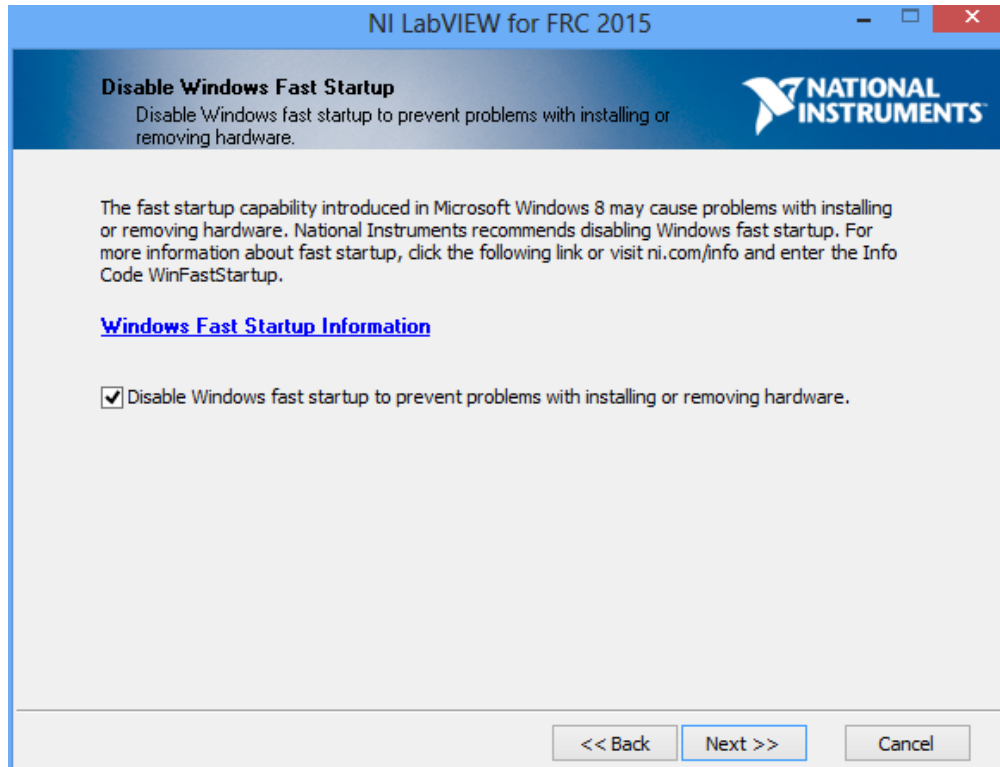
Driver Software Installation



If you see this screen, Click "Next"

Installing LabVIEW for FRC 2018 (LabVIEW only)

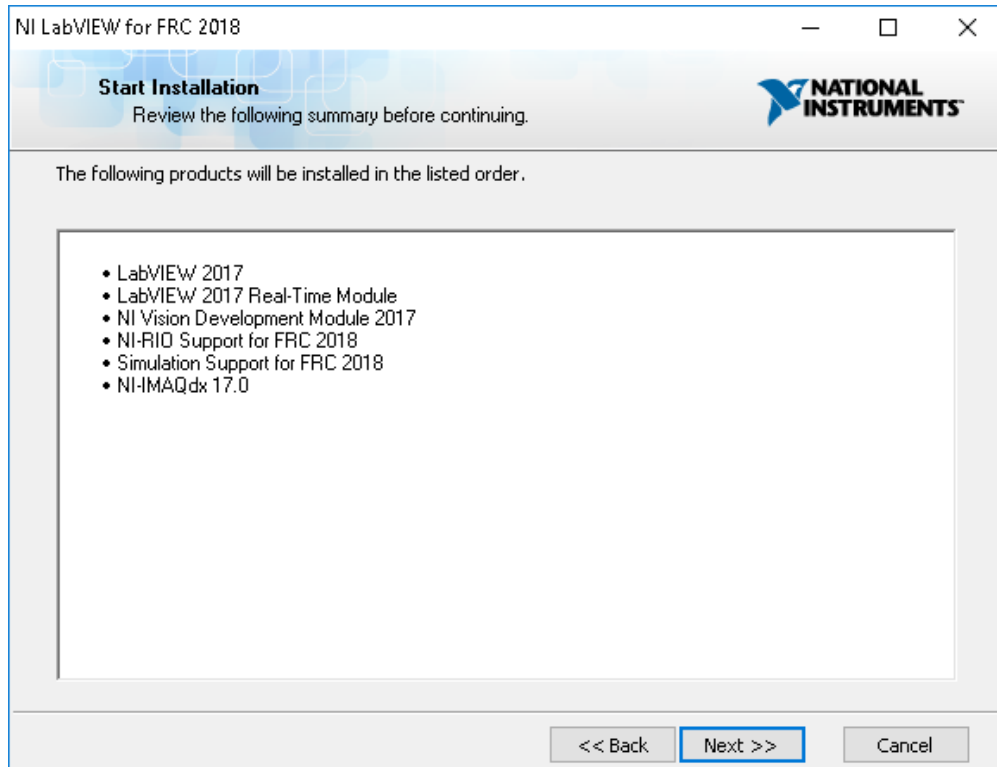
Disable Windows Fast Startup



If you see this screen, click "Next"

Installing LabVIEW for FRC 2018 (LabVIEW only)

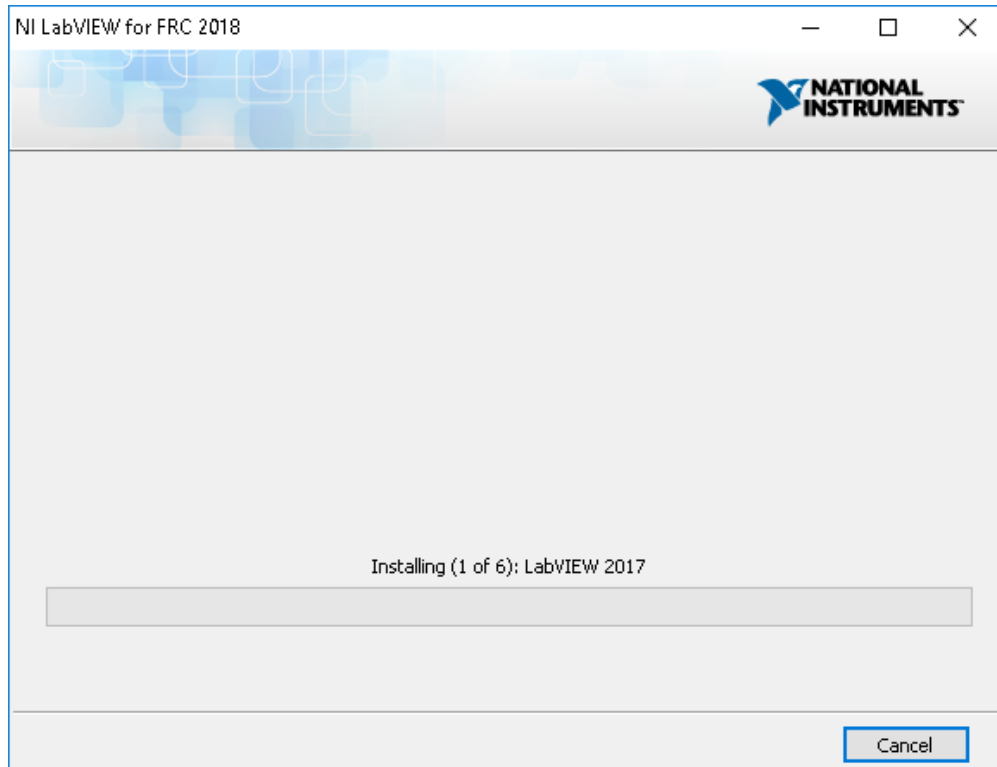
Start Installation



Click "Next"

Installing LabVIEW for FRC 2018 (LabVIEW only)

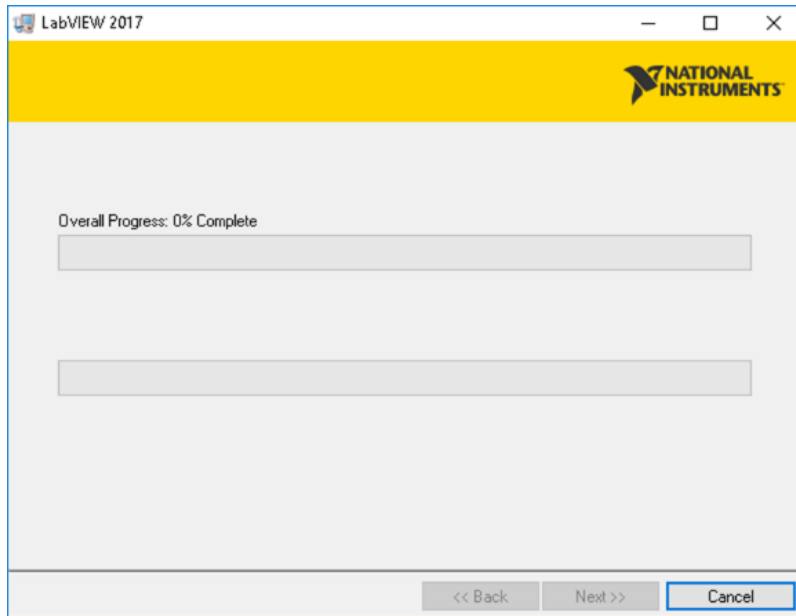
Overall Progress



Overall installation progress will be tracked in this window

Installing LabVIEW for FRC 2018 (LabVIEW only)

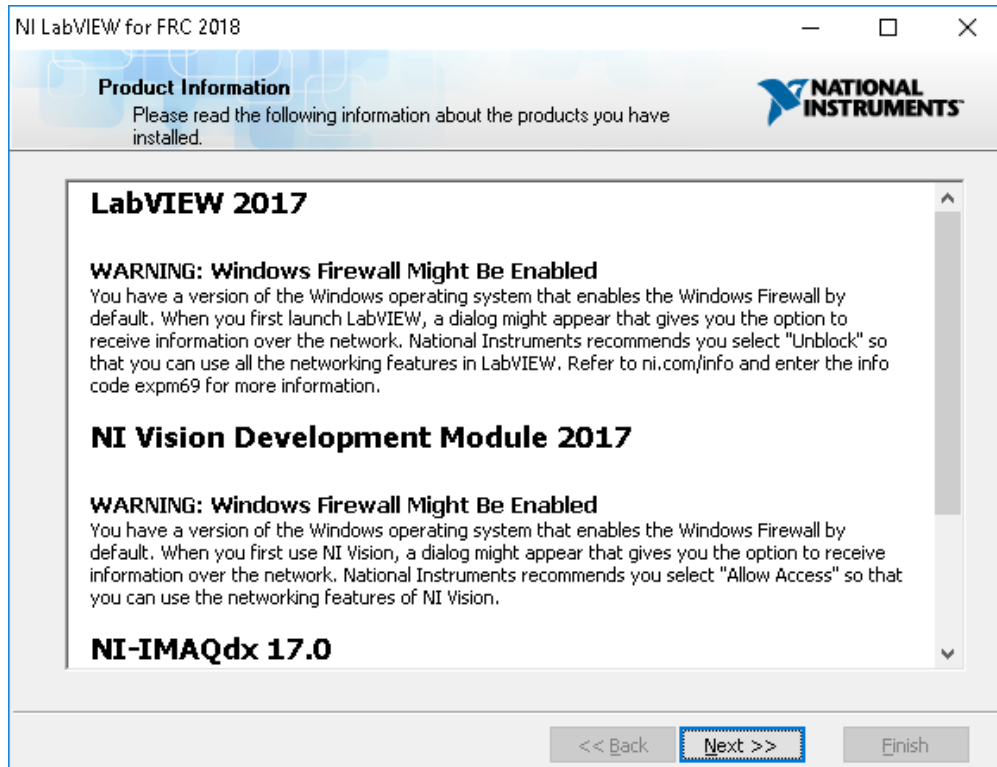
Individual Product Progress



Each product installed will also create an individual progress window like the one shown above.

Installing LabVIEW for FRC 2018 (LabVIEW only)

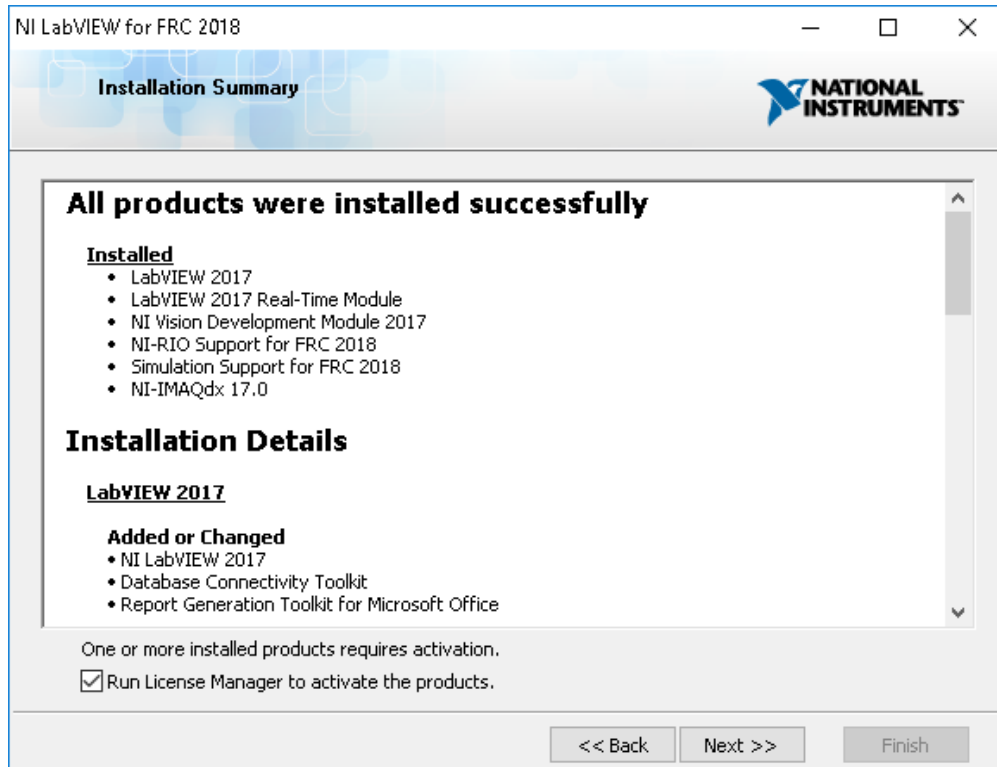
Product Information



Click "Next"

Installing LabVIEW for FRC 2018 (LabVIEW only)

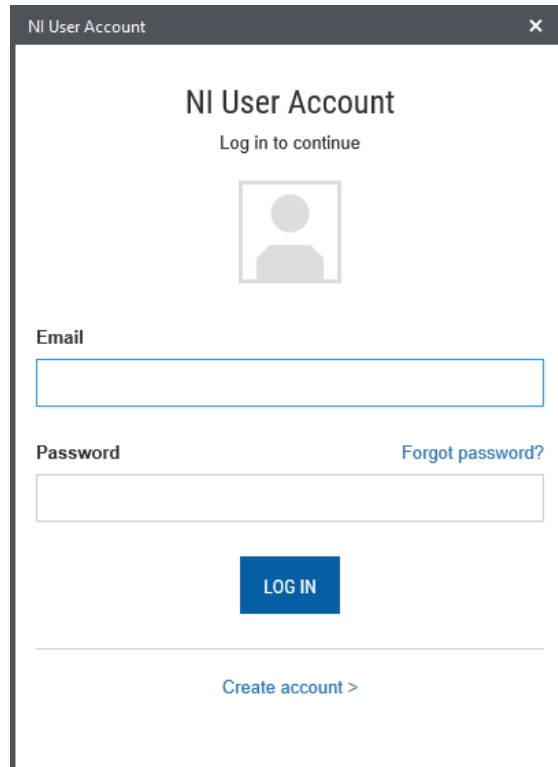
Installation Summary



If internet access is available and you are ready to activate, click "Next"; otherwise uncheck the "Run License Manager..." and click "Next".

Installing LabVIEW for FRC 2018 (LabVIEW only)

NI Activation Wizard



The image shows a screenshot of the 'NI User Account' login window. The window has a dark title bar with the text 'NI User Account' and a close button. The main content area is white and contains the following elements: the title 'NI User Account', the instruction 'Log in to continue', a placeholder for a user profile picture, an 'Email' label above a text input field, a 'Password' label above a text input field, a 'Forgot password?' link, a blue 'LOG IN' button, and a 'Create account >' link at the bottom.

NI User Account

Log in to continue

Email

Password

Forgot password?

LOG IN

Create account >

Log into your ni.com account. If you don't have an account, select 'Create account' to create a free account.

Installing LabVIEW for FRC 2018 (LabVIEW only)

NI Activation Wizard (2)

NI Licensing Wizard

?

Enter serial numbers of products to activate

Serial Number

LabVIEW 2017 Base Development System	
LabVIEW 2017 Database Connectivity Toolkit	XXXXXXXXXX
LabVIEW 2017 Full Development System	XXXXXXXXXX
LabVIEW 2017 Home Edition	XXXXXXXXXX
LabVIEW 2017 Debug Deployment System	XXXXXXXXXX
LabVIEW 2017 Professional Development System	XXXXXXXXXX
LabVIEW 2017 LabVIEW Robotics FRC Simulation	XXXXXXXXXX
LabVIEW 2017 Real-Time Debug Deployment	XXXXXXXXXX
LabVIEW 2017 Real-Time Development	XXXXXXXXXX

Enter Activation Codes

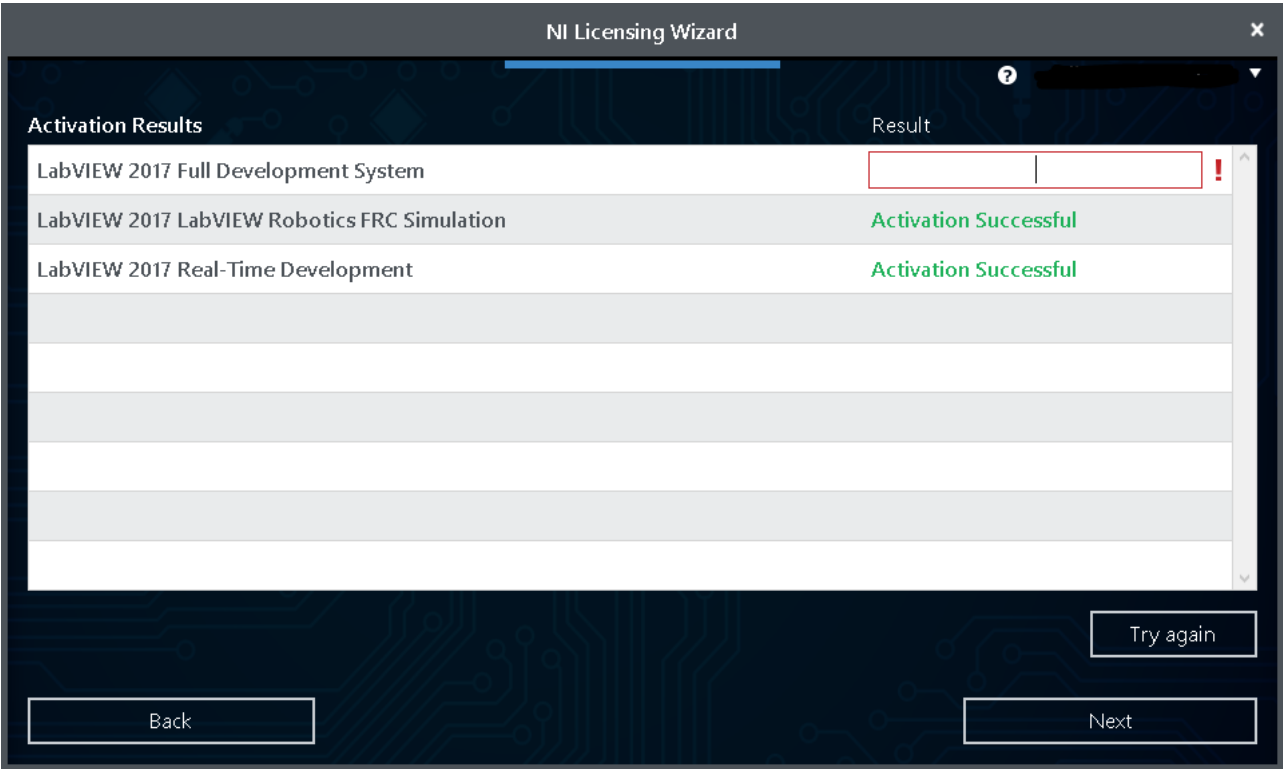
Refresh

Activate

The serial number you entered at the "User Information" screen should appear in all of the text boxes, if it doesn't, enter it now. Click "Activate".

Installing LabVIEW for FRC 2018 (LabVIEW only)

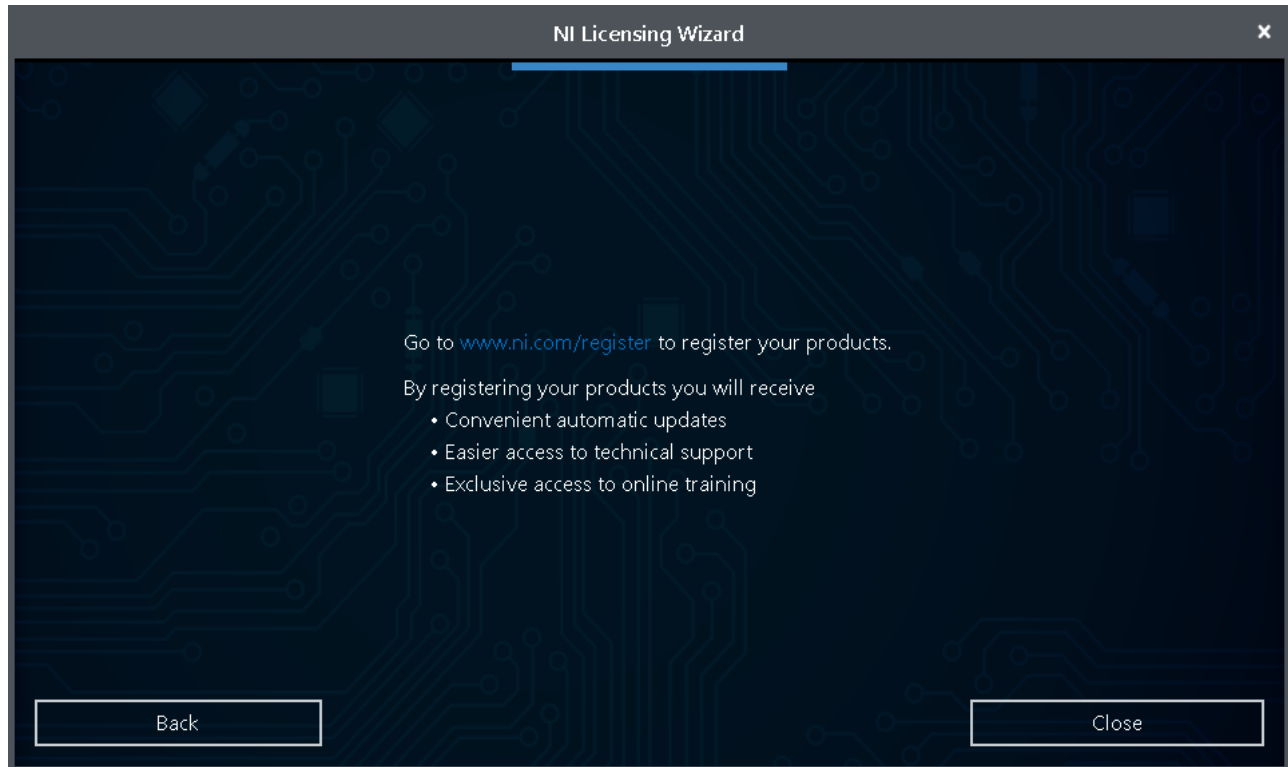
NI Activation Wizard (3)



If your products activate successfully, an “Activation Successful” message will appear. If the serial number was incorrect, it will give you a text box and you can re-enter the number and select “Try Again”. If everything activated successfully, click “Next”.

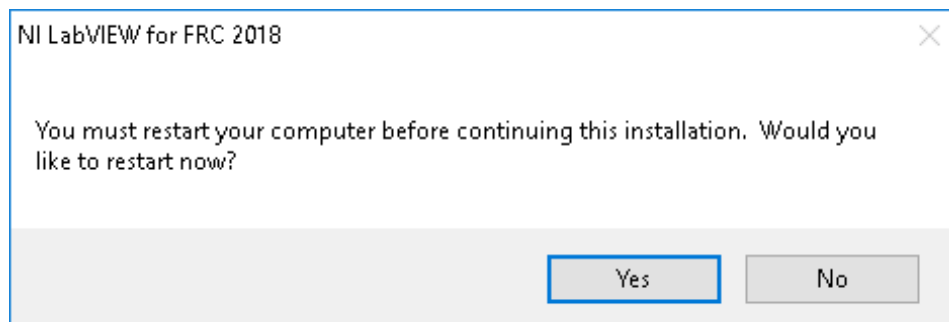
Installing LabVIEW for FRC 2018 (LabVIEW only)

NI Activation Wizard (4)



Click "Close".

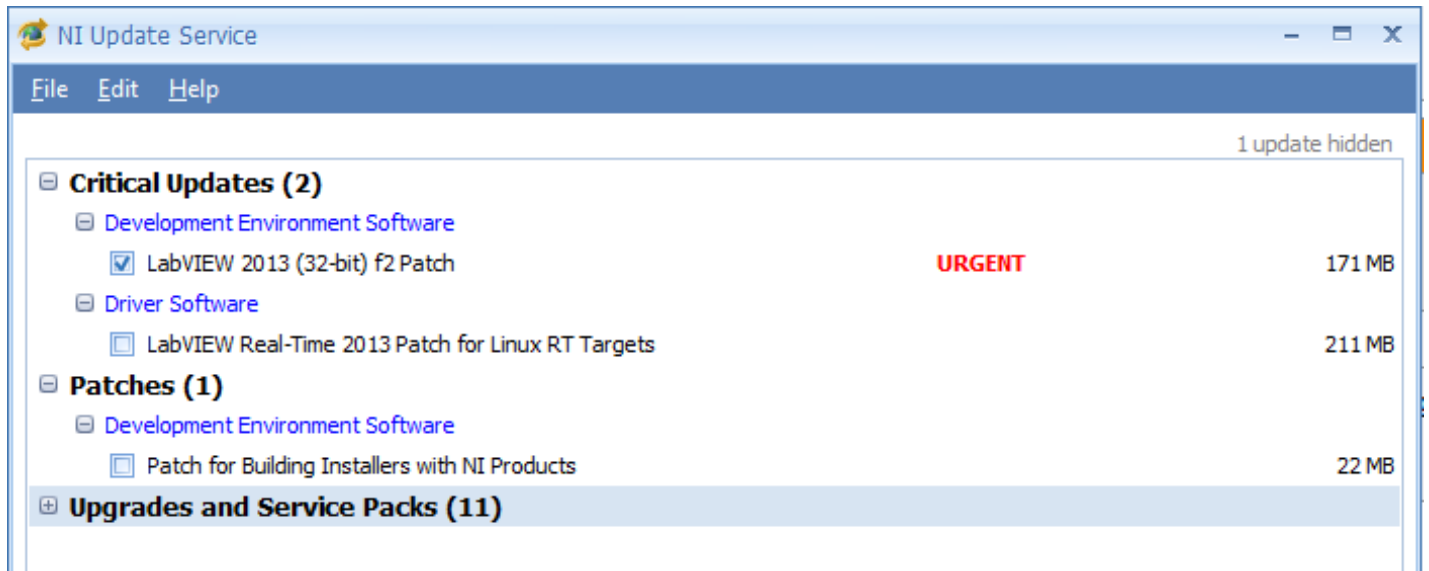
Restart Message



Select "Yes"

Installing LabVIEW for FRC 2018 (LabVIEW only)

NI Update Service



On occasion you may see alerts from the NI Update Service about patches to LabVIEW. **It is not recommended to install these updates unless directed by FRC through our usual communication channels (Frank's Blog, Team Updates or E-mail Blasts).**