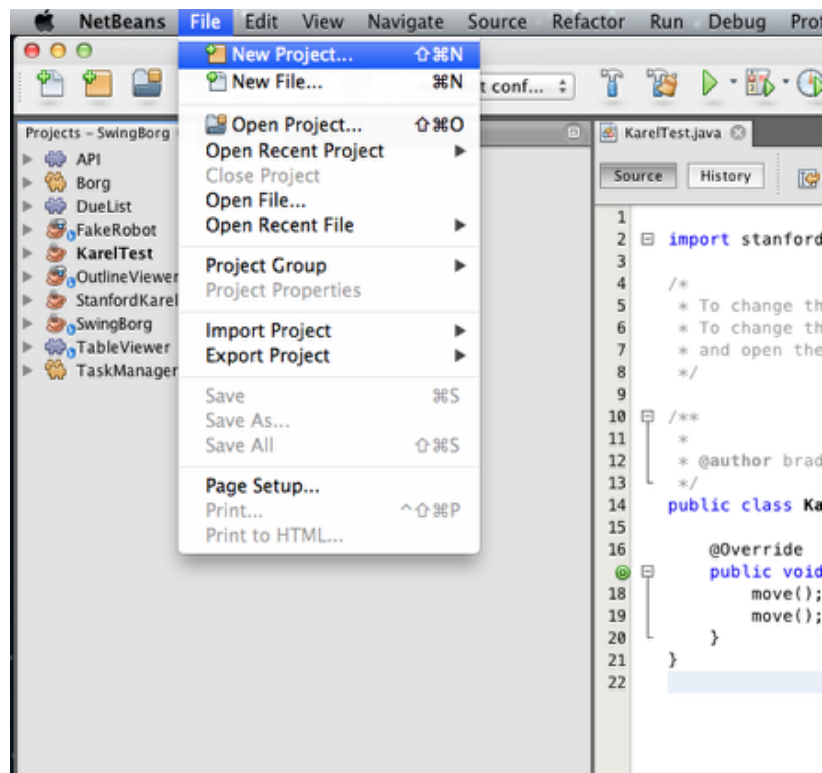


Creating a robot project - Java

Creating a robot project - Java

This article is about command based programming in Java, if you are programming in C++ click [here](#) to skip ahead to learning about subsystems.

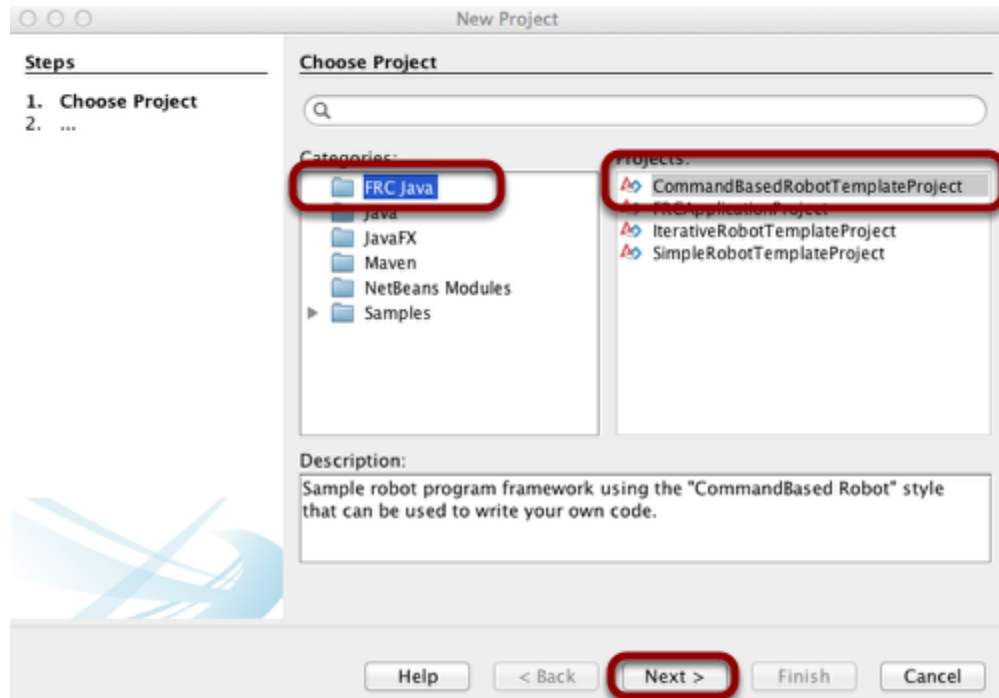
Create a new project



Create the project in NetBeans by selecting File then New Project...

Creating a robot project - Java

Choose project type



Select the project type to create. In this case since we are creating a command based robot project, select FRC Java for the category, then CommandBasedRobotTemplateProject from the list of project types and select Next. All the base files will be automatically created for you.

Creating a robot project - Java

Name the project and set parameters for create

The screenshot shows the 'New Project' dialog box in NetBeans, specifically the 'Name and Location' tab. The dialog is titled 'New Project' and has a 'Steps' panel on the left with two steps: '1. Choose Project' and '2. Name and Location'. The 'Name and Location' panel contains the following fields and buttons:

- Project Name:** MyFRCRobot
- Project Location:** /Users/brad/NetBeansProjects (with a 'Browse...' button)
- Project Folder:** /Users/brad/NetBeansProjects/MyFRCRobot
- Project Package:** edu.wpi.first.wpilibj.templates
- Robot Class:** Team190Robot

At the bottom of the dialog, there are five buttons: 'Help', '< Back', 'Next >', 'Finish', and 'Cancel'. The 'Finish' button is highlighted with a red box.

Here you can specify a project name and location where it will be stored. In addition you can supply a name for the base robot class. The Package should be something that uniquely identifies your team or organization. The package declaration qualifies all the code in the project so that code could be shared between organizations without conflicts.

After you hit Finish, the project will be created.