

Windows Firewall Configuration

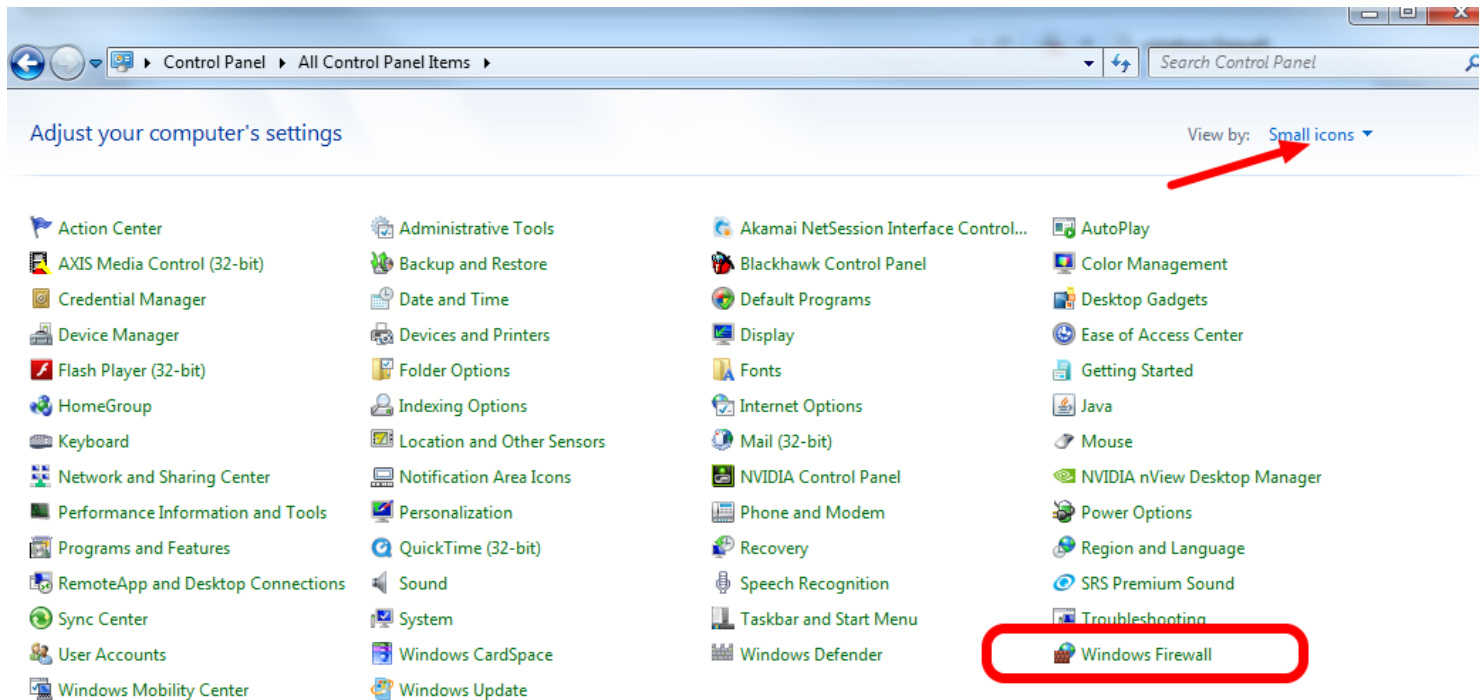
Windows Firewall Configuration

Many of the programming tools used in FRC need network access for various reasons. Depending on the exact configuration, the Windows Firewall may potentially interfere with this access for one or more of these programs. This document describes procedures for Windows 7, but Windows 8 should be similar.

Disabling Windows Firewall

The easiest solution is to disable the Windows Firewall. Teams should beware that this does make the PC potentially more vulnerable to malware attacks if connecting to the internet.

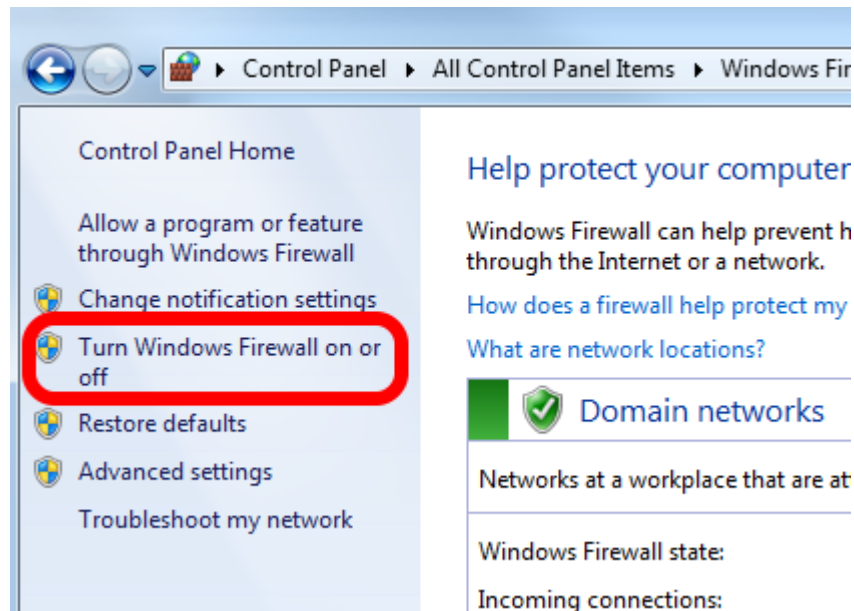
Control Panel



Click Start->Control Panel to open the Control Panel. Click the dropdown next to **View by:** and select **Small icons** then click **Windows Firewall**.

Windows Firewall Configuration

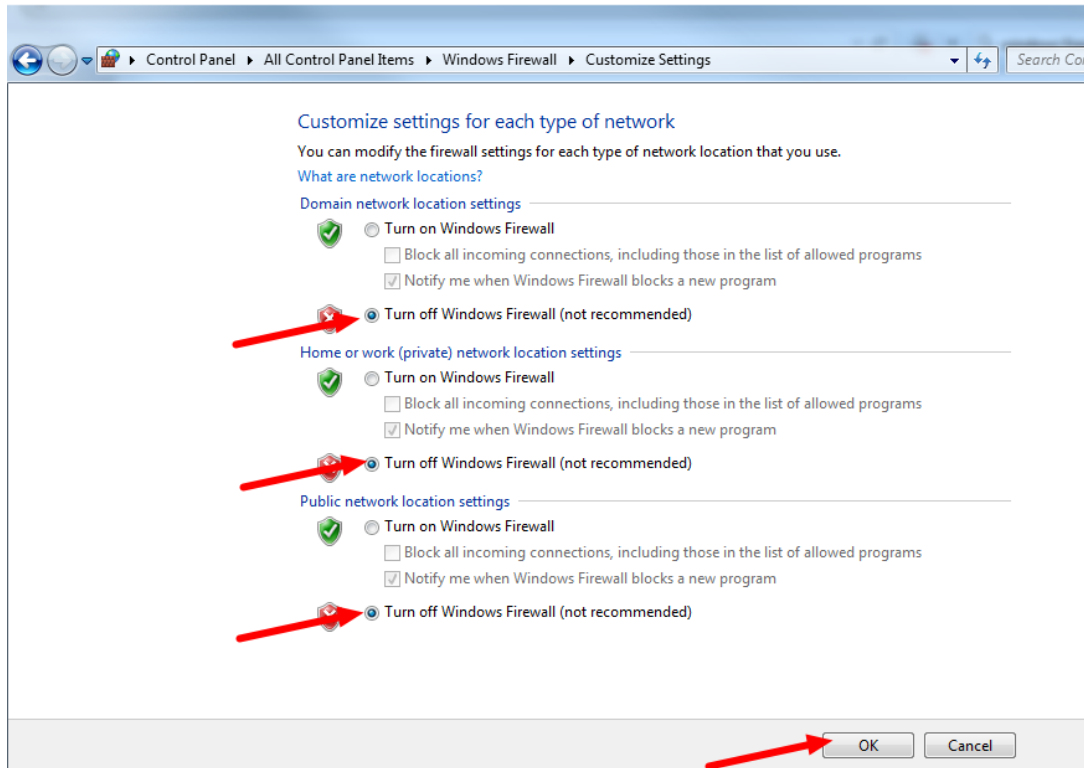
Turn Windows Firewall on or off



In the left pane, click **Turn Windows Firewall on or off**, and click yes or enter your Administrator password if a dialog appears.

Windows Firewall Configuration

Disable the Firewall



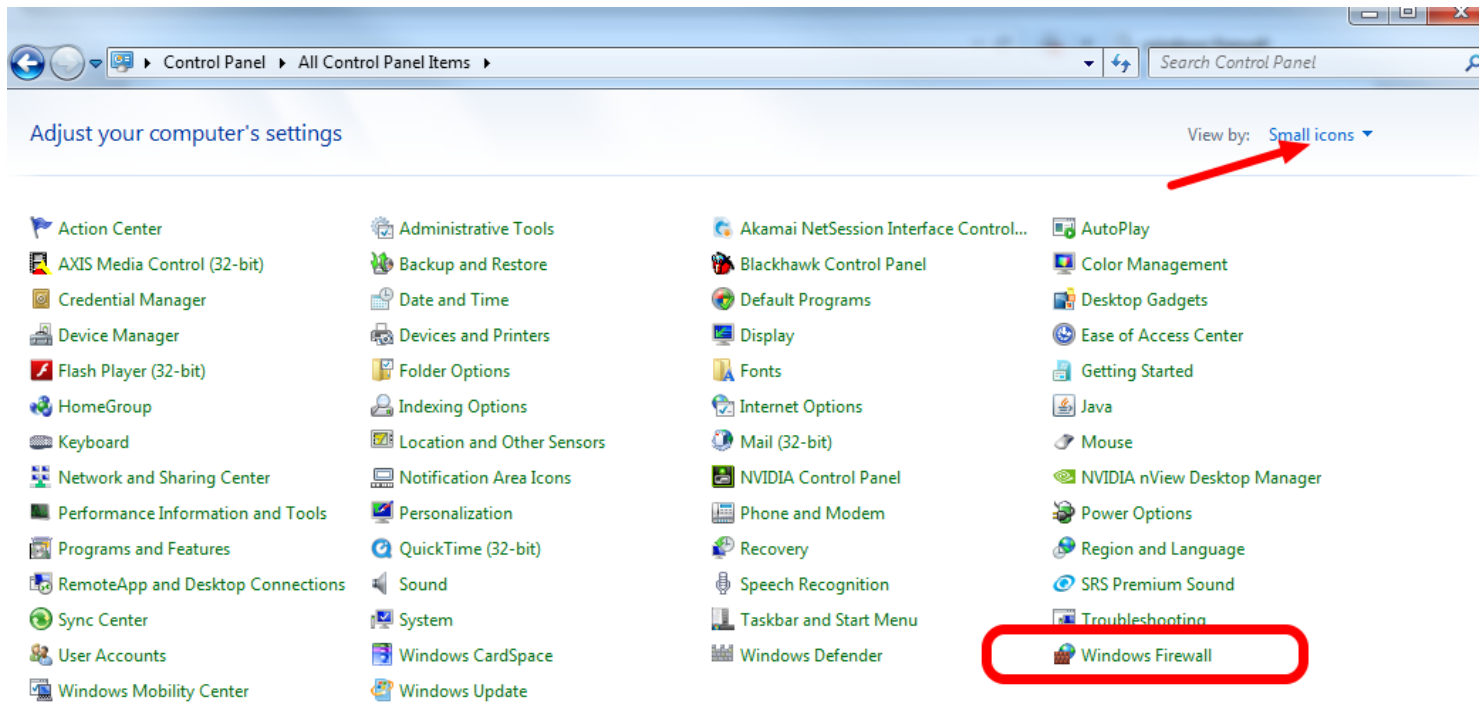
For each category, select the radio button to **Turn off Windows Firewall**. Then click **OK**.

Configure the firewall

Alternatively, you can add exceptions to the Firewall for any FRC programs you are having issues with.

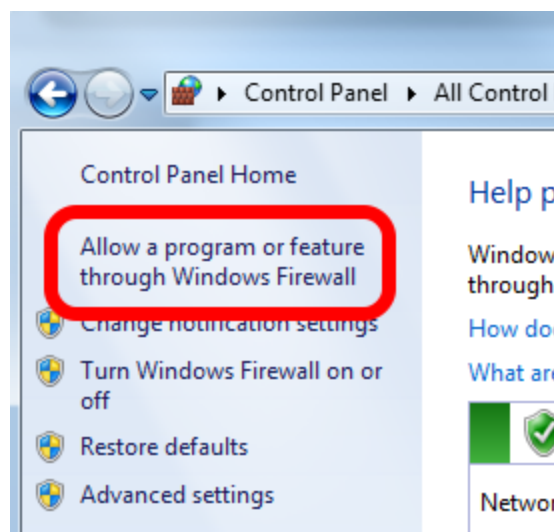
Windows Firewall Configuration

Control Panel



Click Start->Control Panel to open the Control Panel. Click the dropdown next to View by: and select Small icons then click Windows Firewall.

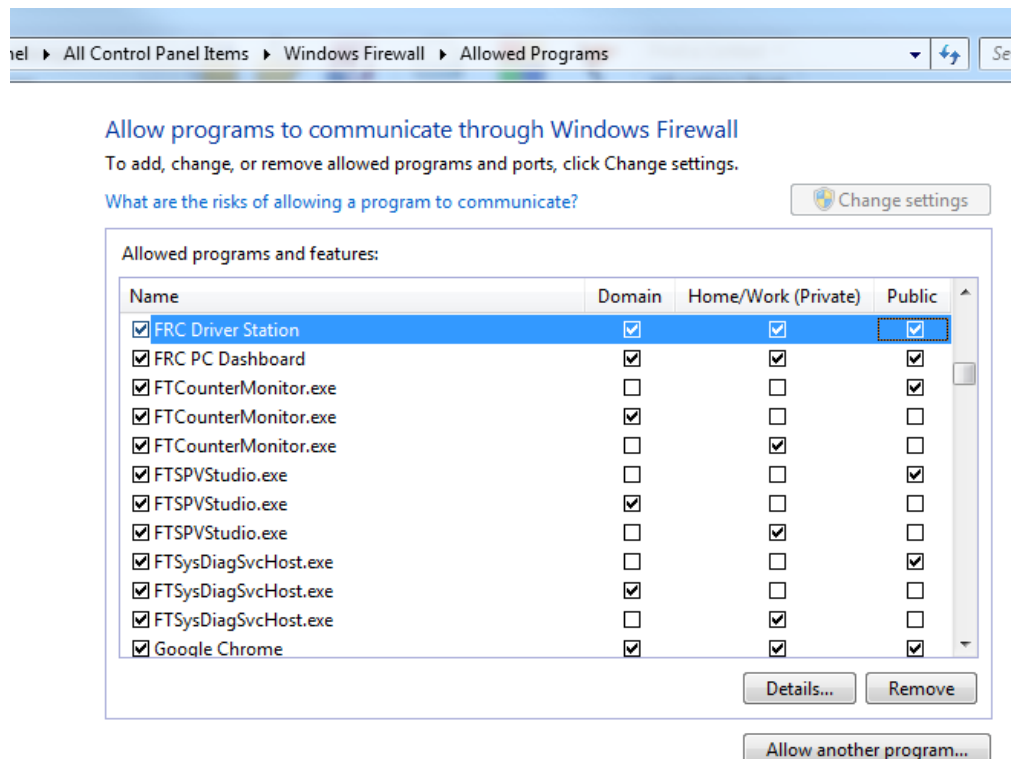
Allow a program...



In the left pane, click Allow a program or feature through Windows Firewall

Windows Firewall Configuration

Allowed Programs



For each FRC program you are having an issue with, make sure that it appears in the list and that it has a check in each of the 3 columns. If you need to change a setting, you made need to click the **Change settings** button in the top right before changing the settings. If the program is not in the list at all, click the **Allow another program...** button and browse to the location of the program to add it.