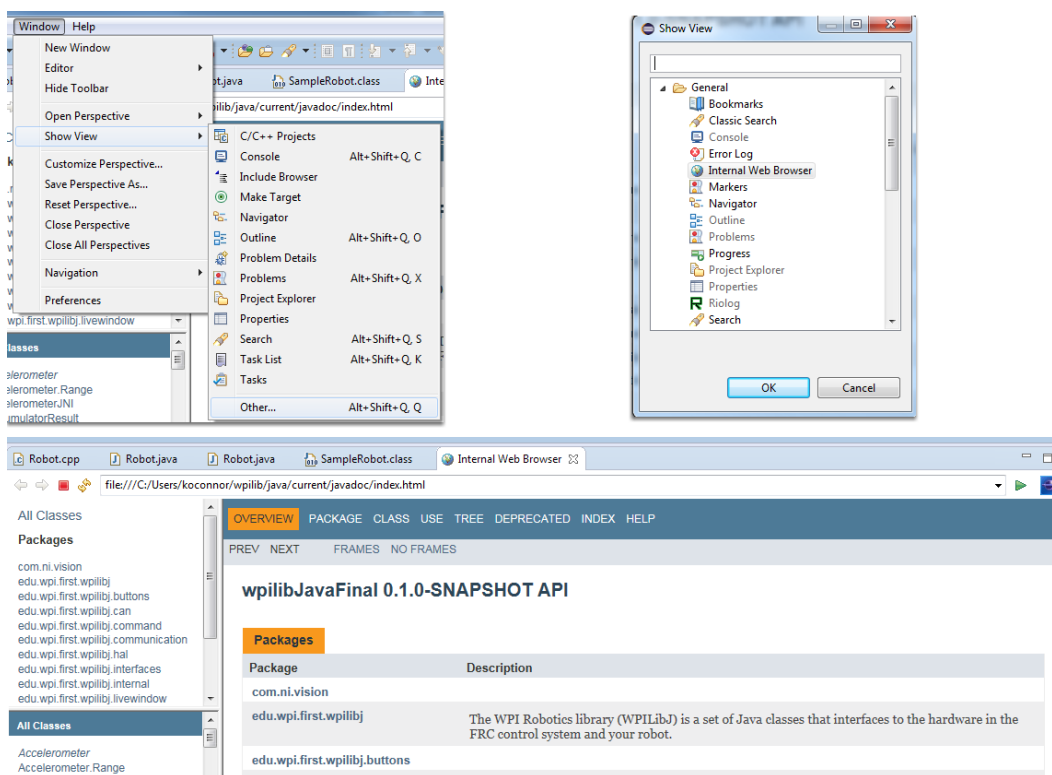


## FRC Java WPILib API Documentation

### Online Documentation

<http://first.wpi.edu/FRC/roborio/release/docs/java/>

### Local Javadoc



The Eclipse plugins also install a local copy of the Javadocs for the library. You can view the Javadoc comments for a particular class or method by hovering over the method in your code. You can also view the complete Javadoc in Eclipse using the built-in web browser. To do this, click Window -> Show View -> Other -> Internal Web Browser then enter the URL USERHOME/wpilib/java/current/javadoc/index.html (USERHOME on Windows is typically C:\Users\USERNAME)