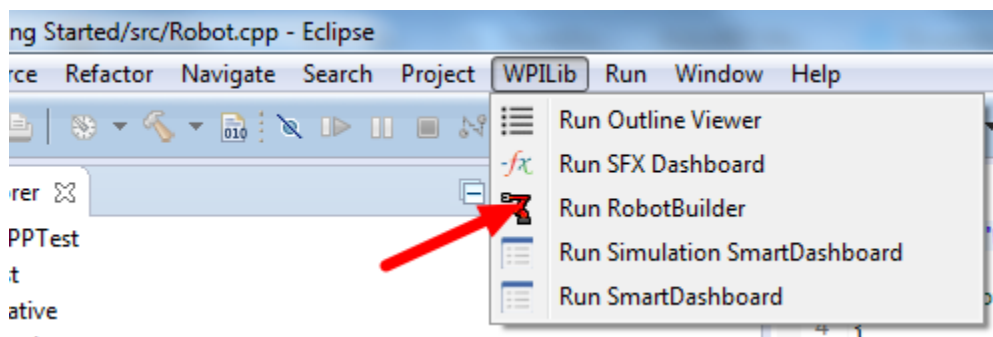


Starting RobotBuilder

Starting RobotBuilder

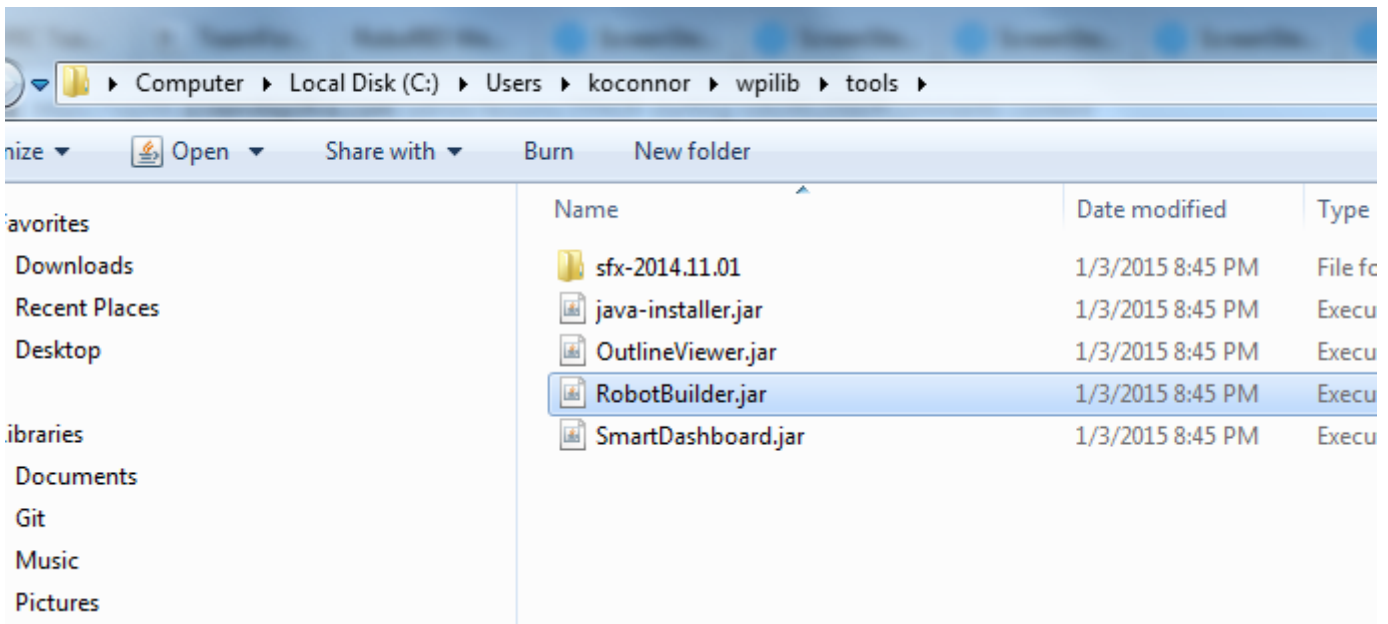
RobotBuilder is a Java program and as such should be able to run on any platform that is supported by Java. We have been running RobotBuilder on Mac OS X, Windows 7, and various versions of Linux successfully.

Option 1 - Starting RobotBuilder from Eclipse



RobotBuilder can be launched directly from Eclipse by clicking on the WPILib menu and selecting Run RobotBuilder.

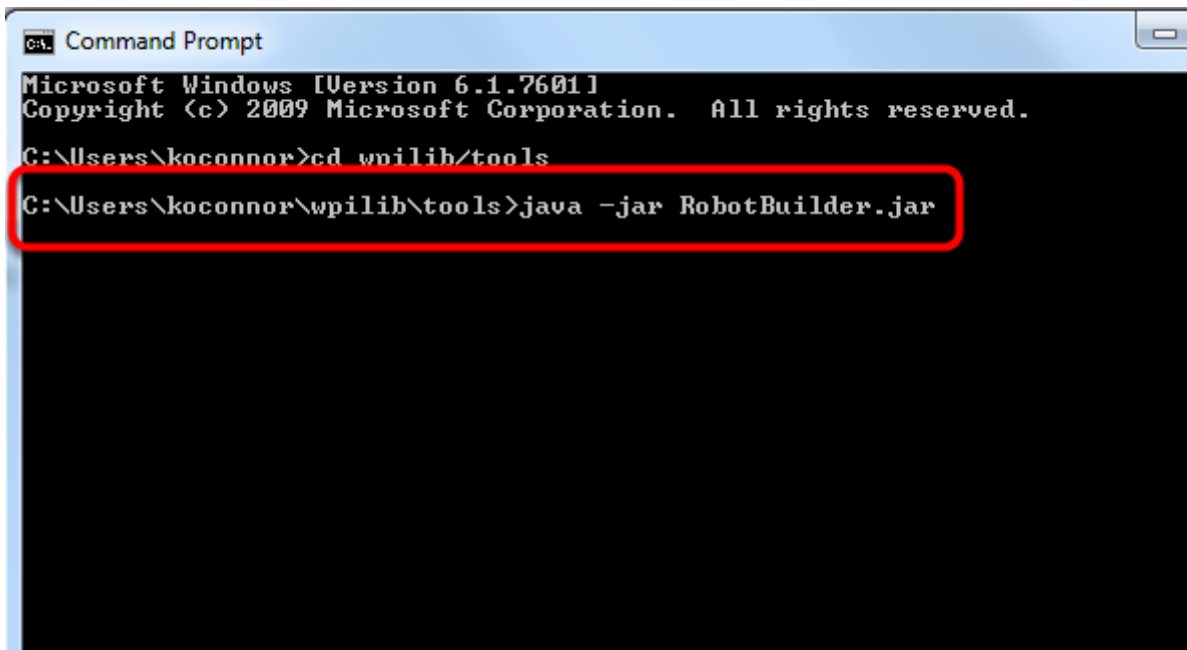
Option 2 - Locating the RobotBuilder .jar file



Starting RobotBuilder

RobotBuilder is shipped as a .jar file (Java archive) included with the Eclipse plugins. In most cases you can simply double-click on the file in a graphical file browser for your operating system and it will start. For both languages, RobotBuilder is located in the wpilib/tools directory. This directory is in your user home directory, usually something like /Users/<username>/wpilib.

Option 3- Starting RobotBuilder from the command line

A screenshot of a Windows Command Prompt window. The title bar says "Command Prompt". The text inside shows the following commands and output:

```
Microsoft Windows [Version 6.1.7601]
Copyright (c) 2009 Microsoft Corporation. All rights reserved.

C:\Users\koconnor>cd wpilib/tools
C:\Users\koconnor\wpilib\tools>java -jar RobotBuilder.jar
```

The command `java -jar RobotBuilder.jar` is highlighted with a red rectangle.

In some cases Java and your file browser might not be properly configured to run the .jar file by double-clicking. Simply type "java -jar RobotBuilder.jar" from the directory that contains RobotBuilder.