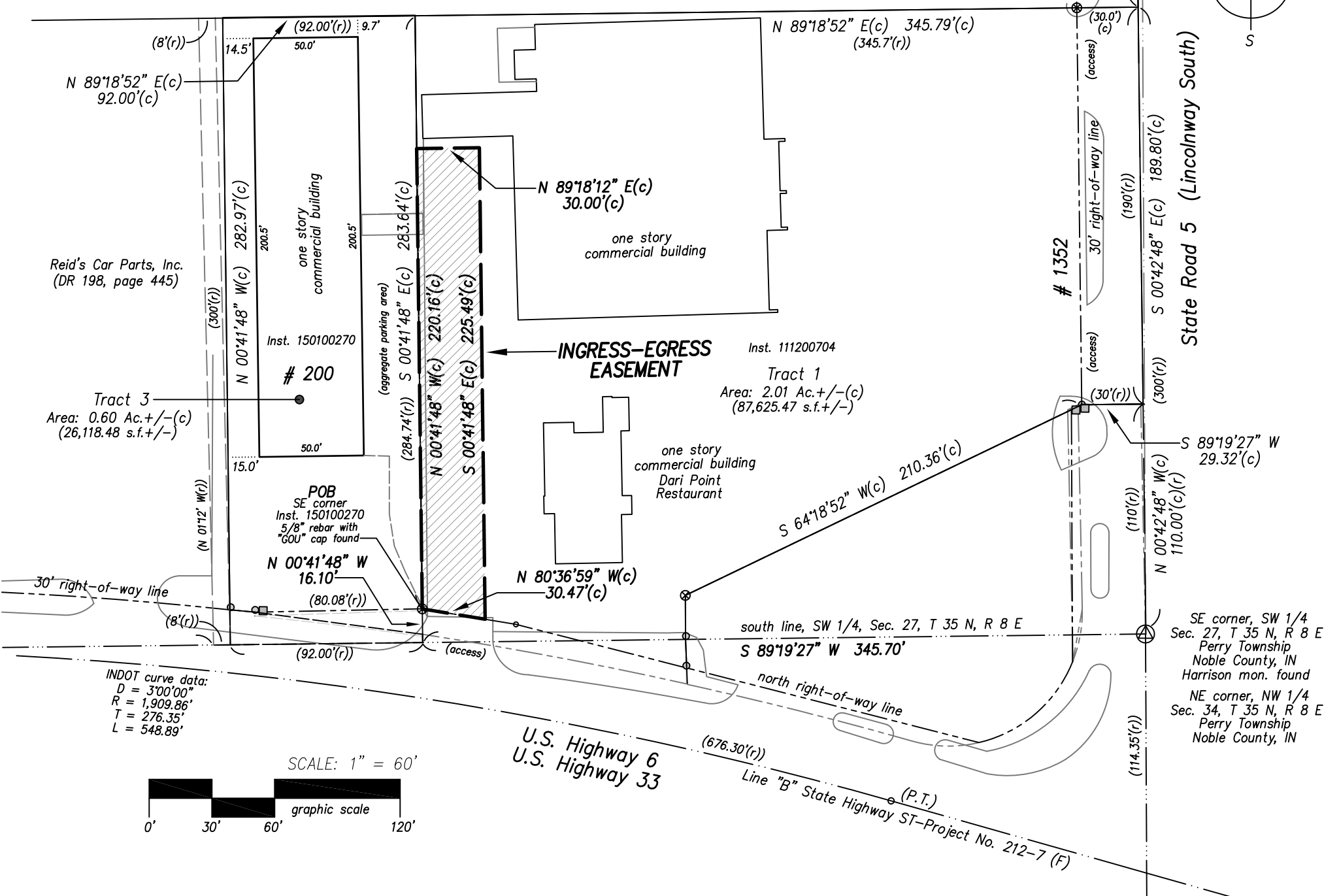
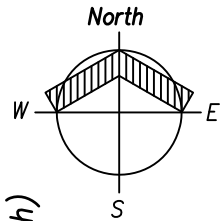


# Exhibit for Ingress-Egress Easement



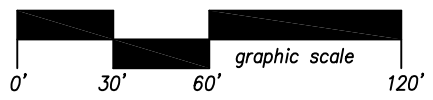
Reid's Car Parts, Inc.  
(DR 198, page 445)

Tract 3  
Area: 0.60 Ac. +/- (c)  
(26,118.48 s.f. +/-)

Inst. 111200704  
Tract 1  
Area: 2.01 Ac. +/- (c)  
(87,625.47 s.f. +/-)

INDOT curve data:  
D = 3°00'00"  
R = 1,909.86'  
T = 276.35'  
L = 548.89'

SCALE: 1" = 60'



SE corner, SW 1/4  
Sec. 27, T 35 N, R 8 E  
Perry Township  
Noble County, IN  
Harrison mon. found

NE corner, NW 1/4  
Sec. 34, T 35 N, R 8 E  
Perry Township  
Noble County, IN

Line "B" State Highway ST-Project No. 212-7 (F)