



Scheerer McCulloch Auctioneers
 4420 Ardmore Ave., Fort Wayne, Indiana 46809
 260.441.8636 • www.scheerermcculloch.com • info@smauctioneers.com



The
 Robert Wilson & Pat Bonsib
 Art Collection



Robert Wilson & Pat Bonsib Art Collection

Featuring over 100 paintings and 35 sculptures (including many signed pieces, 13 pieces of Lalique, 7 pieces of Murano and 15 various sculptures), vintage Stelthorn Hardware storefront items, COLORLESS 1.34 carat diamond ring, sterling silver and more.

AUCTION SCHEDULE

Wednesday, February 21, 2018

5 - 8:00 PM Fine Art Showing, Hors d'oeuvres

Friday, February 23, 2018

11 AM - 3:00 PM Pre-Auction Showing, Fork & Fiddle Food Truck

Saturday, February 24, 2018

8 - 9 AM Early Bird Live Auction

9 AM Live + Online Art & Collectibles Auction

Auctioneer's Note: Artwork and items displayed in brochure are a selection of pieces from all collections.

Jewelry, Murano, Lalique,

Art Glass and Sculptures



- 1 -
COLORLESS 1.34 carat diamond in a 14K white gold setting. Men's Scottish Rite ring with double eagle on each side set with a brilliant cut diamond weighing approx. 1.34 carat. This ring was appraised by a reputable gemologist who gave the diamond a clarity of VS-1 and color E-F.

- 2 -
Chinese Ching Dynasty (Tung Chih Period) porcelain parrot - measures 9" tall.

- 3 -
Signed John Littleton and Kate Vogel 1987 blown glass art sculpture titled "Bagged Bags" 16 1/2"

- 4 -
Auguste Moreau nude woman sculpture in bronze on a marble base - measures approx. 33" tall

- 5 -
Original Milton Hebard bronze sculpture titled "First Love" of a young man and woman in a loving embrace - measures 25 1/4" tall.

- 6 -
Signed Licio Zanetti hand blown glass vase from Murano, Italy 18 1/2"

- 7 -
Pair baluster Asian hand painted enamel vases with floral motif and Chinese dragons on a yellow and blue background.

- 8 -
Lalique France crystal swan, frosted to clear, stylized feathers - measures 15" x 8" x 7" H.

- 9 -
Signed Lladro Daisa girl on ball sculpture, gres finish. Measures 19.5" H x 17" x 12".

- 10 -
Herend Geisha; hand painted and glazed porcelain figurine - measures 13.5" H.

- 11 -
Bernard Simon green onyx carved statue of a peaceful female face - measure 16" tall.

- 1 -
Le Pho - titled Parmi les Fleurs (Among the Flowers) - oil on canvas. This traditional painting by Pho depicts two Vietnamese women among brightly colored flowers. Pho is said to have had the first one man art show in Paris in 1938. His works are extremely desirable. SLR, Art Dim: 31 1/2" x 39" Frame Dim: 39" x 46 1/2".

- 2 -
Samuel Edmund Oppenheim - titled "The Boudoir" Considered to be the foremost American Portraitist here we have a young lady holding a pink flower in her long black dress within a Victorian interior. The mood is solemn and one can't help but wonder what thoughts might be flowing through her mind. SUL, Art Dim: 11 1/2" x 8 1/2" Frame Dim: 25" x 21".

- 3 -
Rodolfo Dotti - oil on canvas - titled "Dune dei Gabbiani" A gallery favorite this bright colored painting depicts a young woman walking the beach with a flock of seagulls overhead. This is a simple painting however the thick textures and heavy brushstrokes are mesmerizing. SLL, Art Dim: 31" x 34 3/4" Frame Dim: 37 1/4" x 41".



- 1 -

Louis Bonsib - titled "Eternal Hills of Brown County" This is a beautiful landscape painting from a view point of the tree covered hills of Brown County in Indiana. Bonsib is a master at impressionist landscapes and he has chosen the perfect location to create this masterpiece.
SLR, Art Dim: 35 1/4" X 29 1/2" Frame Dim: 39 1/2 x 33 1/2".

- 2 -

Louis Bonsib of a landscape in Brown County, Indiana. This impressionist painting depicts a farmed corn field with bundles of corn stocks lined up for gathering. This newly bare field is hedged by sparse trees and a cloud covered sky. The season is expressed with soft fall colors and course textures.
SLR, Art Dim: 24 1/2" x 34 1/4" Frame Dim: 28 1/2" x 38 1/2".

- 3 -

Murano hand blown art glass - From the Oggetti Studio In Italy. This glass sculpture is a unique take on the human body with elegant lines and beautiful coloring seen through the front and back. It is signed D. Rozin on the black oval shaped base along with a Oggetti sticker on the left leg. It is in very good condition and very heavy. It stands 28" tall.



4



2



3

Vintage Stelhorn Hardware

Advertising Items and Antiques/Collectibles

- 1 -

Antique revolving hardware cabinet - 96 drawers. Hardware cabinet, one of the nicest we have ever seen! M: 40" H x 20.5"

- 2 -

Pittsburgh Paints porcelain Metal Products Co. Sign - 3 separate sections, all sections combined. M: 12' 7" L x 2' W

- 3 -

Case XX Cutlery display case designed for a store countertop. M: 41" L x 20" W x 41.5"

- 4 -

C.R. Kirk & Co. stand still coin operated scale - vintage penny carnival weight guessing scale. M: 71" H x 20" W x 27" deep.

- 5 -

1940's Vietnam Era Randall Fighter knife. Blade incised with soldier's name and Randall made in Orlando, Fla. Stacked leather, brass hand guard, original Randall leather sheath, sharpening stone & manual. RARE PIECE!

- 6 -

1851 US Springfield trap door long gun

- 7 -

Vintage Allen Dairy clock with neon light around the inner circumference. M: 20" diameter.

- 8 -

1940's Coca-Cola double sided "Take home a Carton", 25¢ advertising sign. M: 13" diameter.

- 9 -

RARE Weller Tools electric bulb advertising clock by Pam Clock Co. M: 15.25" X 4" deep

- 10 -

Stanley No. 55 combination universal plow plane w/ 52 cutters - a universal tool, used as a plow, dado, rabbet, filletster, match plane, beading and center beading plane, sash and slitting plane and moulding plane.

- 11 -

1990 metal Lawn-Boy sign advertisnig outdoor power equipment. M: 22" x 14".



2



9



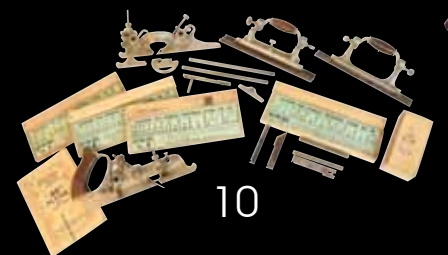
3



6



11



10



8



7



1

13

Stelhorn Hardware - Oldest Hardware in Fort Wayne, Indiana



Albert Schroder - oil on canvas - titled "Blythe Spirit" This is a painting of the hotel in Port Merion, North Whales that sits upon the Irish Sea. The painting is intense with detail. Simply amazing and so lifelike.
SLR, Art Dim: 15" x 39" Frame Dim: 23 1/2" x 47 1/2".



Rosemary Sarah Welch - oil on canvas - titled "Cornish Farm" This stunning painting is alive with Welch's talent as she portrays a man on a farm with his Clydesdale horse. The image is timeless and beautiful with exquisite detail.
SLR, Art Dim: 17" x 25" Frame Dim: 21 3/4" x 28".



John Charles Terelak - oil on canvas - titled "Pont Neuf" which is the oldest standing bridge across the Seine River in Paris, France.
SLL, Art Dim: 15 3/4" x 19 3/4" Frame Dim: 25" x 29".



Maximo Cortina - oil on canvas - titled "Cadaques Gerona" (Girona)-Spain. Following with his rich tradition of architectural painting this image is absolutely authentic.
SLR, Art Dim: 27 1/2" x 21 1/2" Frame Dim: 34 1/2" x 28 1/2".



Jean Pierre Dubord - oil on canvas - titled "La-Ferme-en Hiver" meaning The Shut in Winter. This highly regarded artist has most likely portrayed the Normandy countryside in this winter scene.
SLR, Art Dim: 12 1/4" x 15 1/4" Frame Dim: 19 1/2" x 22 1/2"



Dietrich - oil on canvas - titled "California Shoreline" The contrast of primary colors used in the piece are delightful, clean and thoughtfully used to create the vastness portrayed.
SLR, Art Dim: 15 1/2" x 11 1/2" Frame Dim: 22" x 18 1/2".



Dominic Thoming Cheng - acrylic on silver foil This painting illustrates two birds perched on the stem of a lotus pod surrounded by foliage and a simple flower blossom. Chinese characters on the right side that may be his signature.
Art Dim: 29 1/2" x 11 1/2" Frame Dim: 20 1/2" x 38 1/2".



Jean-Francois Bourgeat - oil on canvas - titled "Bord de Seine a Samois" This 20th century painting is signed by the artist (ll) with title and studio stamp on the reverse side. It is a beautifully balanced painting of a river water scene with reflective trees, tied off boats and cottages surrounded by flowers and foliage's.
SLL, Art Dim: 21 1/2" x 18" Frame Dim: 30" x 26 1/4"



E.J. Cygne - oil on canvas - titled "Marchand Des Fleurs" (Flower Merchant). This lovely painting most likely takes place on the busy streets of France as a woman sells her beautiful pink flowers to the patrons passing by.
SLL, Art Dim: 29 1/2" x 39 1/2" Frame Dim: 39 1/2" x 49 1/2"



Gustav Weiss - oil on canvas - Titled "Tegernsee" This magnificent and breathtaking image is of the Tegernsee Village in Bavaria, Germany. Once a war painter in the 1940's Weiss' paintings are simply flawless as he seems to capture each detail with the perfect color, light and technique.
SLR, Art Dim: 23" x 31" Frame Dim: 31"x 39".

- 1 -

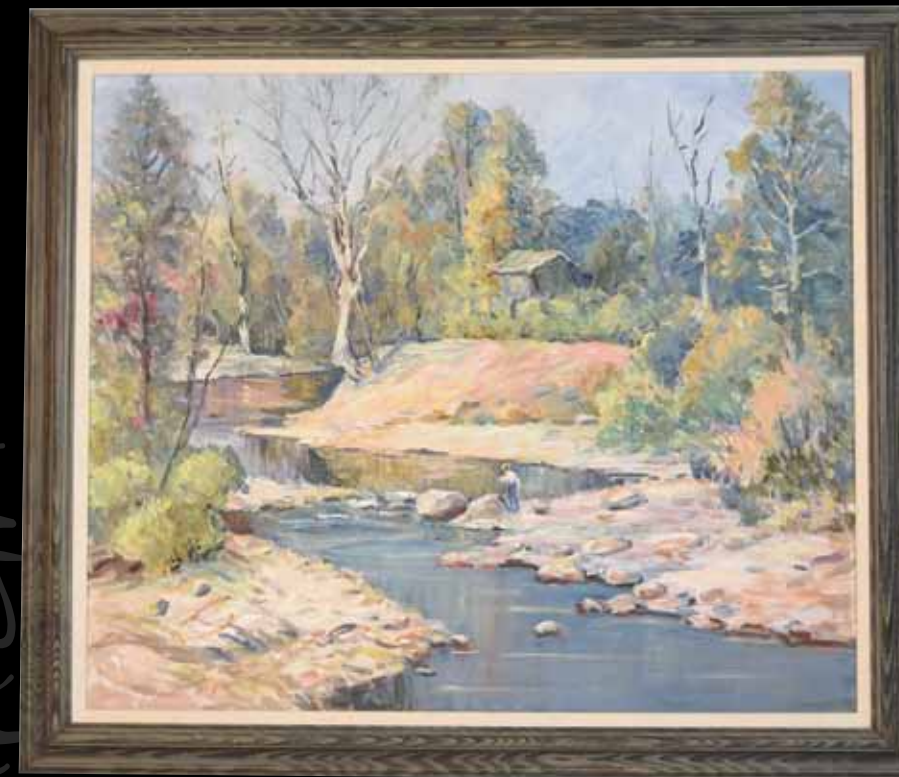
Louis Bonsib - titled "On Little Pigeon River" It was painted in Tennessee and depicts a young boy fishing along the river surrounded by the beauty of nature. This impressionist painting is truly surprising with Bonsib's awareness to detail and sensibility to the peacefulness of nature through color. A gallery favorite.
SLL, Art Dim: 24 3/4" x 29 1/2" Frame Dim: 30" x 35".

- 2 -

Samuel Edward Oppenheim - oil on canvas - titled "Interior With Geisha Girl" Oppenheim's work has been described as gracious mellow poetry and this painting is a prime example with the perfect amount of color and subtle imagery.
SUL, Art Dim: 21 1/2" x 27 1/2" Frame Dim: 29" x 35".

- 3 -

Emile Gruppe - titled "Andros Islands" Here we have a beautiful impressionist painting of a platform overlooking the aqua blue waters at sunset on the island. The last boat is just about to depart under a pink sky that make every other color more vibrant. These are the techniques of an experienced and masterful painter.
SLR, Art Dim: 29 1/2" x 35 1/2" Frame Dim: 38" x 44".



1



2



3

5

12



3



1



2

- 1 -
Samuel Edmund Oppenheim - oil on canvas - titled "White Ballroom Gown" This painting, by whom some call the Foremost American Portraitist, captures the beauty of a woman in a white ballroom gown within a Victorian interior. The soft colors and edges by Oppenheim are the captivating technics that has driven his popularity.
SUL, Art Dim: 11 1/2" x 8 1/2" Frame Dim: 25" x 21"

- 2 -
French artist Louis Fabien's (b. 1924) - oil on canvas - titled "Billiard au Cafe des Arts a St Tropez" (Billiards at the Café of Arts on Tropez Street). Here Fabien has captured yet another moment in time as patrons mingle while playing billiards and cards at a local café in France. It has great detail, brilliant colors and vibrant lighting. This painting has a message written by Fabien on the back addressed to the original owner. It says ...for the museum Bob Wilson; very friendly. It is also dated 5/6/1984.
SLL, Art Dim: 31 1/2" x 45" Frame Dim: 38" x 52".

- 3 -
Spanish carved wood statue of a semi-nude young boy playing a horn while standing upon a seashell. There is a considerable amount of detail incised into this statue unfortunately the artist is unknown. It stands 5' tall.

Leonard C Lane - oil on canvas - titled "Peace" This painting is so realistic you'll feel like jumping right in the water for an afternoon swim to the boats anchored among the rocky landscape and boat houses. The water appears to be sparkling as Lane captured an image so many people dream about.
SLL, Art Dim: 11 1/2" x 15 1/2" Frame Dim: 20 1/2" x 24 1/2".

Louis Fabien - oil on canvas - titled "Le bel ite en Provine" (The Beautiful Site in Provence). Here we have a family in their backyard on a sunny summer day. The colors are true and the lighting is extraordinary as it shines through the trees.
SLR, Art Dim: 31 1/2" x 39" Frame Dim: 39 1/2" x 47".

Louis Fabien - titled "Terrasse sur les Boulevards" (Terrace on the Boulevards). This fun painting depicts the night life of at a busy restaurant as a waiter serves spirits to the well dressed young patrons. It is very bright and colorful with a great amount of detail.
SLL, Art Dim: 36" x 28 1/4" Frame Dim: 44" x 36".

Louis Fabien - oil on canvas - titled "Les Collette's-Hommage a Renoir" Known as an Impressionist Pointillist Fabien has captured the home Renoir purchased in 1907 Les Collette in this painting.
SLL, Art Dim: 39" x 39" Frame Dim: 47" x 47"

Albert Leslie Buell - oil on canvas - titled "Gulf Gulls" This painting is a beautiful woman standing in the oceans breeze in a long white sundress with hat in hand gazing at the endless waters. Above are six sea gulls keeping her company in the sun.
SLR, Art Dim: 35 1/2" x 27 1/2" Frame Dim: 37 1/2" x 45 1/2"



Samuel Edmund Oppenheim - oil on canvas - titled "Vase With Bouquet" Typically known as the Foremost American Portraitist this still life is equally beautiful as we can see red and white flowers with green foliage arranged in a plain blue vase.
SLL, Art Dim: 11 1/2" x 8 1/2" Frame Dim: 19" x 16".

Andre' Gisson - oil on canvas - titled "Night Landscape" Said to be a master impressionist Gisson studied the world over to create a mood of serenity in his works and this is a perfect example. With the limited color palette of bluish greens and hints of yellow there is certainly serenity between the women walking among the trees.
SLL, Art Dim: 11 1/2" x 15 1/2" Frame Dim: 22" x 25"

Louis Bonsib - oil on canvas - Impressionist Painting of a Tennessee Landscape. This painting is presented in muted earth tones and depicts a country road leading to a small cabin among the vast Tennessee mountain range and tree line.
SLR, Frame Dim: 22 1/2" x 26 1/2".

Louis Bonsib - watercolor - This nautical painting is of a lone sailboat reflecting in the peaceful water under a greyish blue sky with a boat dock and light house off in the distance. It is said to be one of his earlier works.
SLR, Art Dim: 14" x 11" Frame Dim: 20" x 24".

Louis Bonsib - watercolor - This landscape painting captures a winter's day in the mid-west. You can almost feel the chill in the air and the sound of the distant train as the snow covered ground and small pond reflect the shadows of the overhead tree. Also said to be an earlier work in his career.
SLR, Art Dim: 11" x 14" Frame Dim: 20" x 24".



11

6



Louis Bonsib - oil on board - Still life of various fruits accompanied by a green pitcher with a dark maroon background.
SLR, Art Dim: 15 1/2" x 19 1/2" Frame Dim: 20 1/2" x 24 1/2".



Louis Bonsib - oil on board - rolling hills and mountain ranges covered in trees along a curved dirt road with two small houses hidden among the thriving foliage.
SLR, Art Dim: 23 1/2" x 29 1/2" Frame Dim: 34" x 38".



Louis Bonsib - oil on board - Bow River Glacier in Alberta, Canada. This is a wonderful painting with great detail and color that gives the image movement and a sense of vastness for such a small piece.
SLL, Art Dim: 15 1/2" x 19 1/2" Frame Dim: 18 1/2" x 22 1/2".



Louis Bonsib - oil on board - titled "Green Man" This classic Bonsib impressionist landscape is quiet yet tender as two bare trees stand tall in the winters unforgiving impact.
SLR, Art Dim: 7 1/2" x 9 1/2" Frame Dim: 9 1/4" x 11".



Louis Bonsib - watercolor - of a home that sits along a river surrounded by trees and foliage with a mountain range in the distance. Most likely from his travels to the Smokey Mountains.
SLL, Art Dim: 14 1/2" x 20" Frame Dim: 20 1/2" x 26 1/2".



Louis Bonsib - watercolor - Here we have coastal sand dunes surrounded by grasses, foliage and a grove of tall trees. Bonsib uses warm hues of peach, gray, greens and white for a very soothing feel.
SLR, Art Dim: 19" x 25" Frame Dim: 29 1/2" x 34 1/2".



Louis Bonsib - watercolor - titled "Spring Bouquet" This painting hung in the Hoosier Salon Exhibition in the 1960.
SLL, Art Dim: 17 1/4" x 11 1/2" Frame Dim: 25 1/2" x 21 1/2".



Louis Bonsib - watercolor - titled "Mill In The Gorge" This painting came to fruition as Bonsib traveled the hills of Tennessee and stumbled upon this local mill along the river gorge. It sits deep in the mountains and tree covered hills of the area.
SLL, Art Dim: 28 1/4" x 20 1/2" Frame Dim: 36 1/4" x 28 1/2".



Louis Bonsib - watercolor - of a typical Mid-west scene. Here we have a small barn surrounded by trees in a field of gold with a rickety picket fence and grey autumn sky.
SLR, Art Dim: 13 1/4" x 9 1/2" Frame Dim: 15" x 19".



Louis Bonsib - Original landscape watercolor of Bow Lake and Glacier.
SLR, Art Dim: 8 3/4" x 11 1/2" Frame Dim: 17 1/2" x 20 1/2".

- 1 -

Stunning original oil painting by Artist Leonard C. Lane (1910-1978) titled "Gulf Tranquility" A perfect title for such a masterpiece. The tranquility captured in this painting is amazing. It feels as if your right there watching the clouds shade the sun for a brief moment in time.
SLL, Art Dim: 23 1/2" x 35 1/2" Frame Dim: 32 1/2" x 44 1/2".

- 2 -

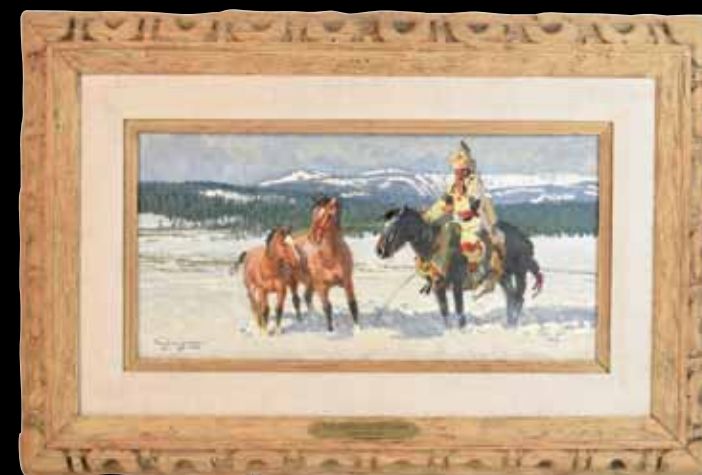
Robert Loughheed - oil on board - titled "The Country of the Crows" This oil painting of a Native American Indian rounding up a couple of mustangs in a snowy meadow.
SLL, Art Dim: 9 3/4" x 19 1/2" Frame Dim: 20" x 30".

- 3 -

Handmade Italian art glass flamingo from Ultima Crystal Art with alternating ribbons of maroon and orange throughout the body, gilt legs and a long black beak. Measures 24" H.



1



2

3

7



Leonard C Lane - titled "Battle Of Wings" Here, under the bright blue sky and puffy clouds the seagulls flock over the motionless sail boats stranded in the sands off the sparkling ocean.
SLL, Art Dim: 19 1/2" x 25 1/2" Frame Dim: 29" x 35".



Darrel Austin - titled "Watchful Beast" This duo of droopy green eyed tigers appear a little less ferocious as they peacefully keep watch on a full moon's night. This piece displays a thick texture and gloss that is unique to Austin
SLL, Art Dim: 19 1/2" x 23 1/2" Frame Dim: 29" x 33".



Emile Albert Gruppe - oil on canvas - Impressionist serene coastal beach home anchored by gorgeous palm trees.
SLR, Art Dim: 23.5" x 20" Frame Dim: 33.25" x 29.5".



Frederick McDuff - titled "Long Shadows" This painting is most likely the French coast line of Brittany as many of his famous beach scenes were captured.
SLL, Art Dim: 8 1/2" x 17 1/2" Frame Dim: 14" x 22".



Leonard Lane - titled "Hacket's Cove" This original oil on canvas is alive with color and texture as Lane depicts two boats anchored in the blue waters of the cove. On the rocky shoreline there is a row boat awaiting the next adventure under the floating clouds. Absolutely stunning.
SLL, Art Dim: 11 1/2" x 15 1/2" Frame Dim: 20 1/2" x 24 1/2".

Bernard Simon - pink onyx carved statue of a beautiful female body. The combination of polished and rough cut onyx only adds to the depth, texture and beauty of this piece. It is signed B. Simon and it is one solid piece. It measures roughly 27" x 15" x 9 1/2".
- BELOW -



Frederick McDuff - titled "October Fields" Depicting a mother and child in an open meadow surround by shade trees.
SLL, Art Dim: 13 1/2" x 17 1/2" Frame Dim: 20" x 24".
- BELOW -



Louis Bonsib - oil on canvas - portraying a winter's day at a farm house in the Mid-west. The brilliant use of cool pastel colors are illuminated by the snow covered ground and roof tops of this painting.
SLR, Art Dim: 19 1/2" x 23 1/2" Frame Dim: 22 1/4 x 26 1/4".

Louis Bonsib - oil on board - of a small home off a desolate dirt road with a mountain range in the distance and overcast blue sky. This impressionist painting delivers the beauty in barren lands.
SLR, Art Dim: 19 1/2" x 23 1/4" Frame Dim: 26" x 30".

Louis Bonsib - oil on canvas - depicting a harbor scene with several boats anchored beside a dock house. This impressionist painting by Fort Wayne, IN native is presented in deep rich colors. You can almost sense the movement in the water.
SLR, Art Dim: 19 1/2" x 21 1/4" Frame Dim: 24 1/4" x 26".

Louis Bonsib - oil on canvas - This painting has a great amount of detail and depth as Bonsib illustrates the actions of folks doing their daily chores amid the distant home of their neighbor and towering tree covered mountain range.
SLR, Art Dim: 19 1/2" x 23 1/2" Frame Dim: 26" x 30".

Louis Bonsib - oil on canvas - Illustrating two exposed trees on the snowy banks of the river with gray skies overhead, a snow covered field and a thick tree line in the distance.
SLR, Art Dim: 23 1/4" x 19 1/4" Frame Dim: 28" x 24".

