



Pallet on Pallet

This program allows you to add a sub-pallet to a pallet or better described as if you record Items inside of cases you can add the packs to master packs and master packs to cases and cases to pallet to form a 4-level pallet which has a top-level pallet ID and 3 sub level pallet IDs.

Contents

Sales.Scanco.com Portal Settings.....	2
Accessing the Application	3
Create New Pallet vs. Add to Existing Pallet.....	4
Create New Pallet + Multibin Pallet Type Entry	4
Pallet ID prompt	5
Description Prompt	6
Warehouse Prompt	6
Bin Prompts.....	7
Pallet on Pallet Entry	8
Add to Existing Pallet + Pallet ID prompt	9
Pallet on Pallet Entry	10
Sage Unattended Barcode Transaction Import	11
Where the goes in Sage	11

Scanco Support Email - support@scanco.com
Scanco Support Phone number - 330-645-9959 Opt. 3



Sales.Scanco.com Portal Settings

The 'Pallets' tab options:

Allow Pallet Activities: must be enabled.

Allow Assembling Pallet on Pallets: to allow access the program.

- Allow Pallet Activities
- Allow Create New Pallets
- Allow Pallet Transfers
- Allow Disassembly of Pallets
- Allow Assembling Pallets on Pallets



Accessing the Application

For Companies that have Multibin License Plating, press the Advanced icon.



The 'Pallet on Pallet' icon will start the program.

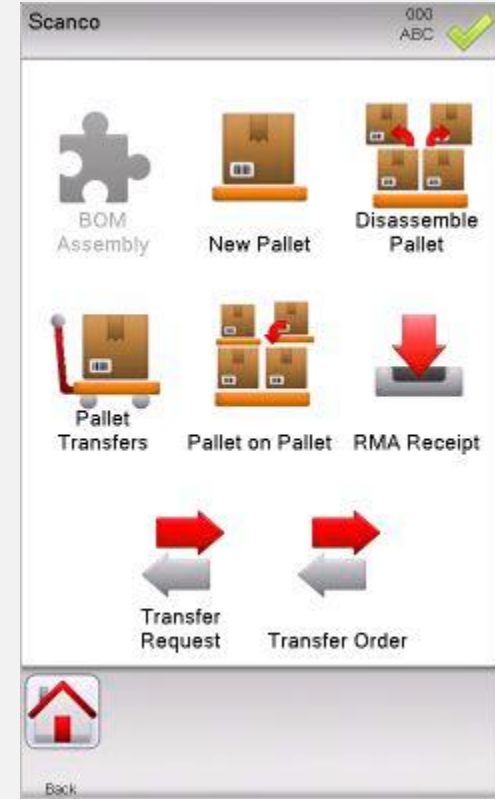
Buttons at bottom:

Exit: to exit Scanco Warehouse.

Send: to send all data collected in all applications.

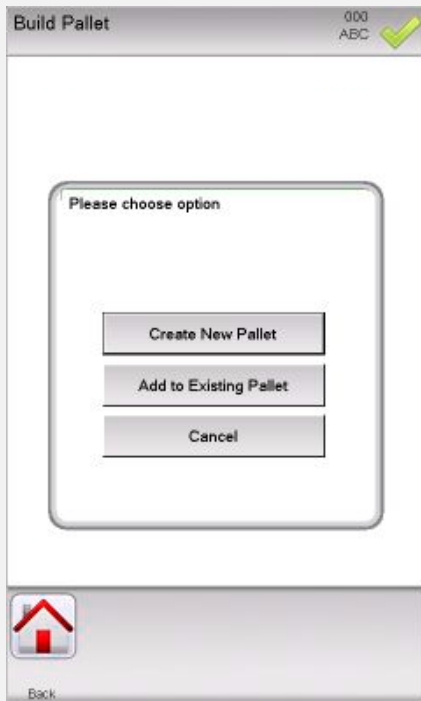
Setting: to adjust settings.

Logout: to change users or companies.





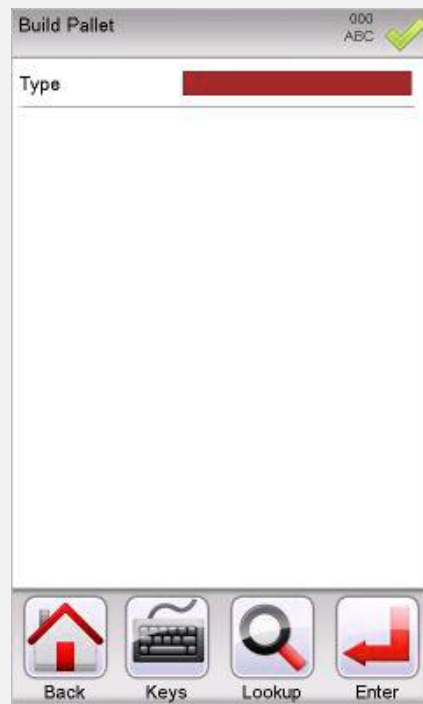
Create New Pallet vs. Add to Existing Pallet



Before we can start the data entry process we must choose between:

Create New Pallet: this option allows you to create a new pallet ID for the top-level pallet and then add the sub-pallets. This helpful for adding Cases to a Pallet.

Add to Existing Pallet: Allows you to add sub-pallets to an existing pallet. This helpful for adding Packs to Master Packs and Master Packs to Cases.



Create New Pallet + Multibin Pallet Type Entry

If your company has **ACS License Plating** enabled, after pressing the 'Pallet' button at the item prompt you will be prompted for Pallet Type.

Pallet Type Lookup

Types can be chosen from the lookup.





Pallet ID prompt

The Next button is helpful for creating the next available Pallet ID, or you can Scan, key in or lookup Pallet ID to advance.

Buttons at bottom:

Back: to move back to Main Applications screen.

Keys: for on-screen keyboard.

Next: to use the next available pallet number.

Lookup: for seeing all available Pallet IDs.

Send: to send all data collected.

Enter: press after keying in data at Batch prompt.



Description Prompt

If you wish to enter in a Description for your new pallet it can be entered here.

Build Pallet 000 ABC ✓

Type KRC

Pallet No KRC00000012

Description [Redacted]

Back Keys Enter

Warehouse Prompt

Scan or Key in any valid warehouse code, or use lookup button to select one from a list.

Build Pallet 000 ABC ✓

Type KRC

Pallet No KRC00000012

Description 2017-01-06

Warehouse 000 [Redacted]

Back Keys Lookup Enter

Buttons at bottom:

Back: move to Main screen.

Keys: for on-screen keyboard.

Lookup: for seeing Warehouses.

Enter: press after keying in data prompt.

Warehouse	Details
000	CENTRAL WAREHOUSE
001	EAST WAREHOUSE
002	WEST WAREHOUSE
002	WEST WAREHOUSE
003	003
003	003
004	004
005	005
006	006
007	007
008	008
009	009
010	010
011	011
012	012
097	RETURNS WAREHOUSE
098	SCRAP WAREHOUSE
099	REPAIR WAREHOUSE
IPI	IPI
PER	

OK Cancel [Down Arrow]



Bin Prompts

If your company has Multi-bin, then the bin collection prompts are required.

For Standard Sage non-multi-bin companies, the Bin field will be a display only field.

Build Pallet 000 ABC

Type KRC

Pallet No KRC00000012

Description 2017-01-06

Warehouse 000 | (MB) CENTRAL W/

Bin To

Back Keys Lookup Enter

Bin Lookup

If the item you are scanning has a Primary bin assigned, it will be displayed in the lookup.

Buttons at bottom:

Back: to move back to Main Applications screen.

Keys: for on-screen keyboard.

Lookup: for seeing all available Bin.

Enter: press after keying in data at Bin prompt.

Bin

6655

A10L

A10M

A10U

A20L

A20M

A20U

A30L

A30M

A30U

A40L

A40M

A40U

A50L

B10L

B10M

B10U

B20L

B20M

B20U

OK Cancel



Pallet on Pallet Entry

At the “Add Pallet” prompt, scan key or lookup in any valid Pallet ID at this prompt.

After you finish entry at this prompt the data collected is save and you be ready to enter another pallet for this same top-level pallet ID.

Build Pallet 000 ABC ✓

Type KRC

Pallet No KRC00000012

Description 2017-01-06

Warehouse 000 | (MB) CENTRAL W/

Bin To A10L

Add Pallet

Back Keys Print Send Lookup Enter

Buttons

Back: to move back to Main Applications screen.

Keys: for on-screen keyboard.

Print: Requires SkyPrint.

Send: to send all data collected in Build Pallet to Sage.

Lookup: for seeing all available Pallets.

Enter: press after keying in data at Pallet prompt.

PAL000000000104	Type: PAL Bin: PO0010102
PAL000000000105	Type: PAL Bin: PO0010102
PAL000000000106	Type: PAL Bin: PO0010103
PAL000000000107	Type: PAL Bin: RECEIVING
PAL000000000109	Type: PAL Bin: RECEIVING
PAL000000000110	Type: PAL Bin: PO0010104
PAL000000000111	Type: PAL Bin: PO0010105
PAL000000000112	Type: PAL Bin: PO0010105
PAL000000000113	Type: PAL Bin: PO0010105
PAL000000000114	Type: PAL Bin: PO0010106
PAL000000000115	Type: PAL Bin: RECEIVING
PAL000000000116	Type: PAL Bin: RECEIVING
PAL000000000117	Type: PAL Bin: RECEIVING
PAL000000000118	Type: PAL Bin: RECEIVING
PAL000000000119	Type: PAL Bin: RECEIVING

Back OK Cancel Enter



Add to Existing Pallet + Pallet ID prompt

Scan, key in or lookup Pallet ID to advance.

Buttons at bottom:

Back: to move back to Main

Applications screen.

Keys: for on-screen keyboard.

Next: to use the next available pallet number.

Lookup: for seeing all available Pallet IDs.

Send: to send all data collected.

Enter: press after keying in data at Batch prompt.

PAL000000000006	Type: PAL Bin: PD0010089
PAL000000000099	Type: PAL Bin: PD0010102
PAL000000000100	Type: PAL Bin: PD0010102
PAL000000000101	Type: PAL Bin: PD0010102
PAL000000000102	Type: PAL Bin: PD0010102
PAL000000000103	Type: PAL Bin: PD0010102
PAL000000000104	Type: PAL Bin: PD0010102
PAL000000000105	Type: PAL Bin: PD0010102
PAL000000000106	Type: PAL Bin: PD0010103
PAL000000000107	Type: PAL Bin: RECEIVING
PAL000000000108	Type: PAL Bin:
PAL000000000109	Type: PAL Bin: RECEIVING
PAL000000000110	Type: PAL Bin: PD0010104
PAL000000000111	Type: PAL Bin: PD0010105
PAL000000000112	Type: PAL Bin: PD0010105

At the bottom of the table are four buttons: a red arrow pointing up, a green 'OK' button, a red 'Cancel' button, and a red arrow pointing down.



Pallet on Pallet Entry

At the “Add Pallet” prompt, scan key or lookup in any valid Pallet ID at this prompt.

After you finish entry at this prompt the data collected is save and you be ready to enter another pallet for this same top-level pallet ID.

Build Pallet 000 ABC

Pallet To PAL000000000099

Warehouse 000 | (MB) CENTRAL W/

Add Pallet

1 2 3 4 5 6 7 8 9 0

ABC Bksp . - ▲ Enter

Back Keys Print Send Lookup Enter

Buttons

Back: to move back to Main Applications screen.

Keys: for on-screen keyboard.

Print: Requires SkyPrint.

Send: to send all data collected in Build Pallet to Sage.

Lookup: for seeing all available Pallets.

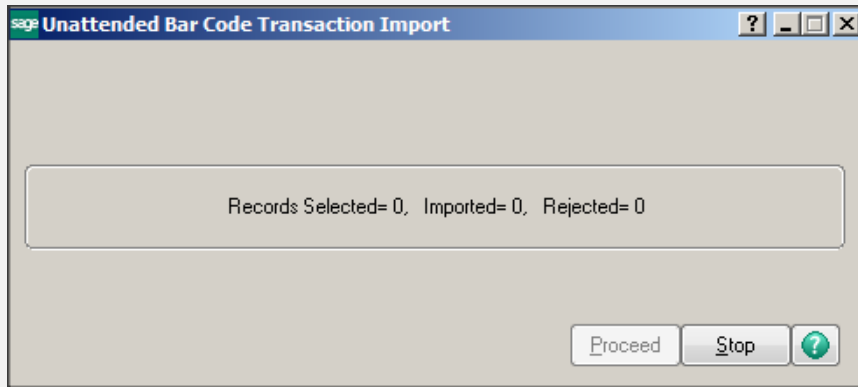
Enter: press after keying in data at Pallet prompt.

Pallet ID	Type	Warehouse	Bin
PAL000000000112	PAL	Warehouse	Bin: P00010105
PAL000000000113	PAL	Warehouse	Bin: P00010105
PAL000000000114	PAL	Warehouse	Bin: P00010106
PAL000000000115	PAL	Warehouse	Bin: RECEIVING
PAL000000000116	PAL	Warehouse	Bin: RECEIVING
PAL000000000117	PAL	Warehouse	Bin: RECEIVING
PAL000000000118	PAL	Warehouse	Bin: RECEIVING
PAL000000000119	PAL	Warehouse	Bin: RECEIVING
PAL000000000121	PAL	Warehouse	Bin: RECEIVING
PAL000000000123	PAL	Warehouse	Bin: RECEIVING

Back OK Cancel



Sage Unattended Barcode Transaction Import: must be running for real time entries to be created in Sage Inventory Management module > Main > Pallet ID Inquiry



Where the goes in Sage

