



Pallet Transfers – Bin to Bin and Warehouse to Warehouse

Contents

Sales.Scanco.com Portal Settings.....	2
Accessing the Application	3
Pallet ID prompt	4
Warehouse Prompt	5
Bin Prompts.....	6
Send data collected	7
Send Completed	7
Send Completed – warning about Barcode Import	7
Sage Unattended Barcode Transaction Import	8
Where the goes in Sage	8

Scanco Support Email - support@scanco.com
Scanco Support Phone number - 330-645-9959 Opt. 3



Sales.Scanco.com Portal Settings

The 'Pallets' tab options:

Allow Pallet Activities: must be enabled.

Allow Pallet Transfers: to allow access the program.

- Allow Pallet Activities
- Allow Create New Pallets
- Allow Pallet Transfers
- Allow Disassembly of Pallets
- Allow Assembling Pallets on Pallets



Accessing the Application

For Companies that have Multibin License Plating, press the Advanced icon.

The 'Pallet Transfers' icon will start the program.



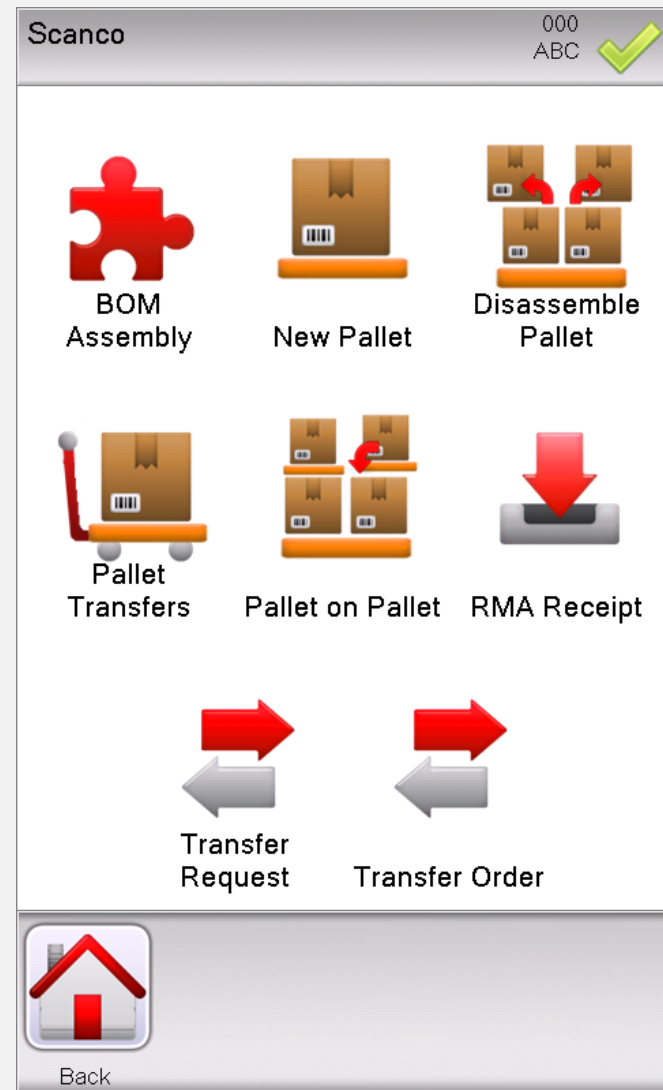
Buttons at bottom:

Exit: to exit Scanco Warehouse.

Send: to send all data collected in all applications.

Setting: to adjust settings.

Logout: to change users or companies.





Pallet ID prompt

Scan, key in or lookup Pallet ID to advance.

Pallet Transfers 000
ABC

Pallet No

Review

Back Keys Lookup Send Enter

Buttons at bottom:
Back: to move back to Main Applications screen.

Keys: for on-screen keyboard.

Lookup: for seeing all available Pallet IDs.

Send: to send all data collected.

Enter: press after keying in data at Batch prompt.

Pallet

CAS000000000047
CAS000000000048
CAS000000000049
CAS000000000051
CAS000000000052
CAS000000000053
CAS000000000054
CAS000000000055
CAS000000000056
CAS000000000057
CAS000000000058
CAS000000000059
CAS000000000060
CAS000000000061
CAS000000000062
CAS000000000063
CAS000000000064
CAS000000000065
CAS000000000066
CAS000000000067

OK **Cancel**



Warehouse Prompt

Scan or Key in any valid warehouse code, or use lookup button to select one from a list.

Pallet Transfers 000
ABC

Pallet No CAS0000000000047

Warehouse 000 | (MB) CENTRAL WA

Bin From O2

Whse To ████████████████████

1 2 3 4 5 6 7 8 9 0

ABC Bksp . - ▲ Enter

Back Keys Lookup Enter

Buttons at bottom:

Back: to move back to Main Applications screen.

Keys: for on-screen keyboard.

Lookup: for seeing all available Warehouses accessible for use.

Enter: press after keying in data at Warehouse prompt.

Warehouse	Details
000	CENTRAL WAREHOUSE
001	EAST WAREHOUSE
002	WEST WAREHOUSE
002	WEST WAREHOUSE
003	003
003	003
004	004
005	005
006	006
007	007
008	008
009	009
010	010
011	011
012	012
097	RETURNS WAREHOUSE
098	SCRAP WAREHOUSE
099	REPAIR WAREHOUSE
RTL	RTL MP2

OK Cancel



Bin Prompts

If your company has Multi-bin, then the bin collection prompts are required.

For Standard Sage non-multi-bin companies, the Bin field will be a display only field.

Pallet Transfers 000
ABC

Pallet No	CAS0000000000047
Warehouse	000 (MB) CENTRAL W/
Bin From	02
Whse To	000 (MB) CENTRAL W/
Bin To	<div style="background-color: red; width: 100px; height: 15px;"></div>

1	2	3	4	5	6	7	8	9	0
ABC	Bksp	.	-	▲	Enter				

Back

Keys

Lookup

Enter

Bin Lookup

If the item you are scanning has a Primary bin assigned, it will be displayed in the lookup.

Buttons at bottom:

Back: to move back to Main Applications screen.

Keys: for on-screen keyboard.

Lookup: for seeing all available Bin.

Enter: press after keying in data at Bin prompt.

Bin

A10L
A10M
A20L
A20M
A20U
A30L
A30M
A30U
A40L
A40M
A40U
A50L
B10L
B10M
B10U
B20L
B20M
B20U
B30L
B30M

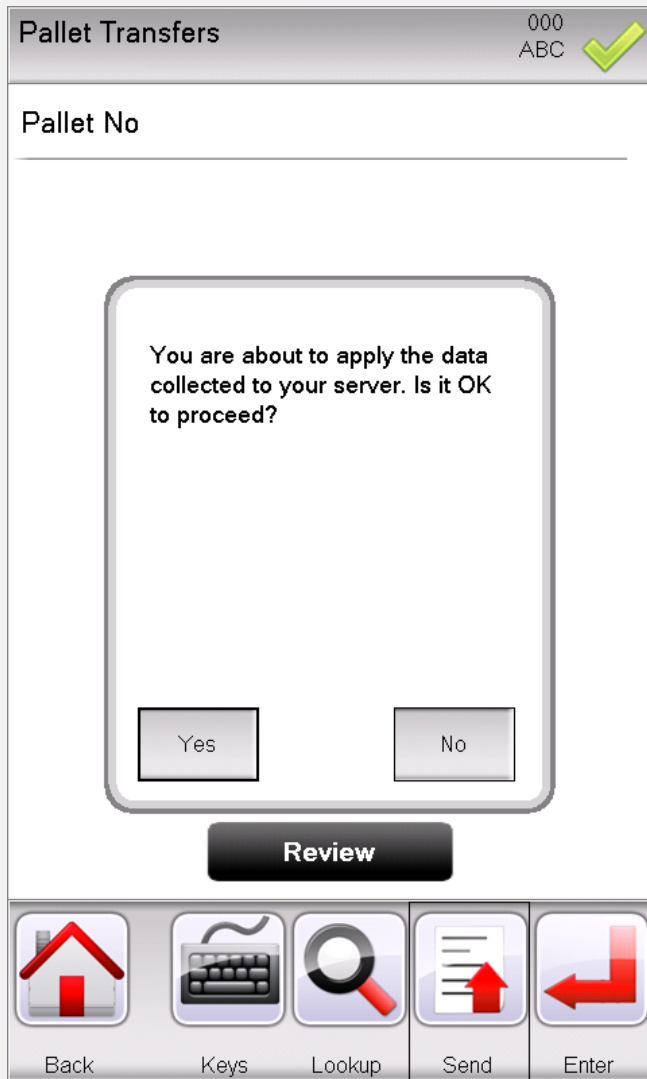
OK

Cancel



Send data collected

The 'Send' button at the Pallet ID prompt should be pressed periodically.



Buttons on Send confirmation pop-up:

Yes: will send data collected to Sage to be imported.

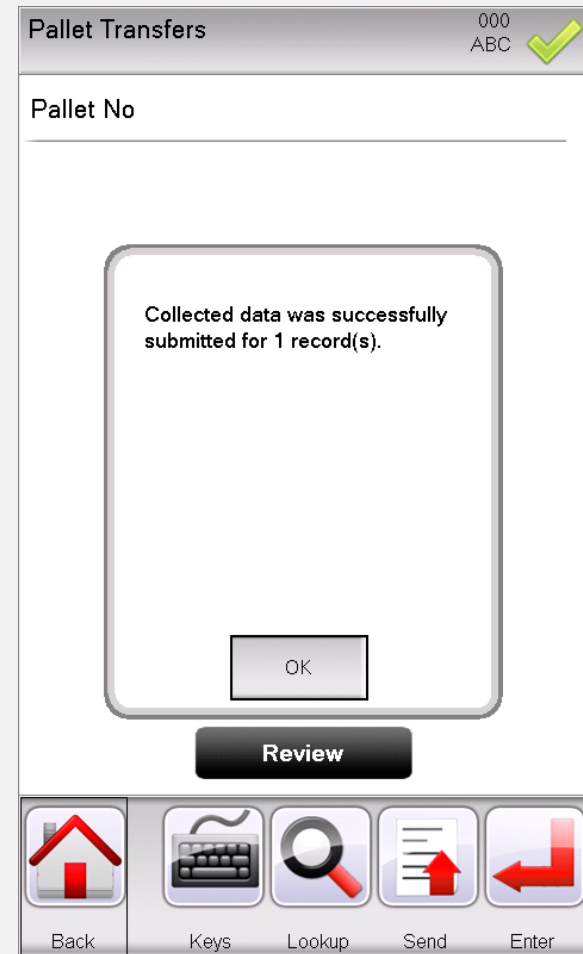
No: to cancel send.

Send Completed

Press 'Ok' on the confirmation message to continue.

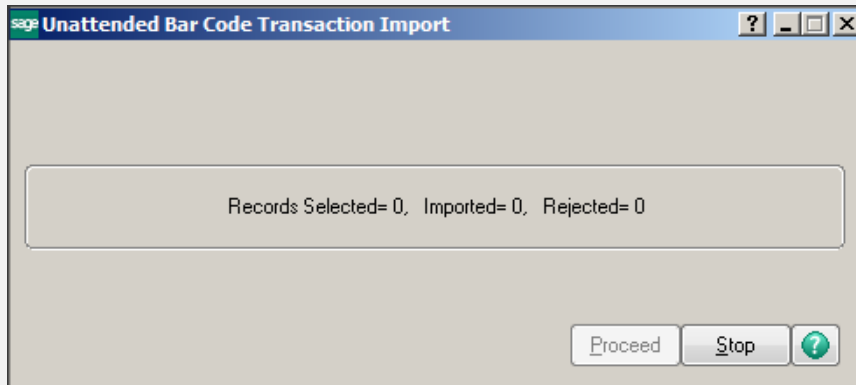
Send Completed - warning about Barcode Import

After confirming "Yes" to sending collected data you may receive a warning message that the Sage Unattended Barcode Transaction Import is not running. Check with your warehouse manager to see if this has accidentally been stopped or not started for a valid reason.





Sage Unattended Barcode Transaction Import: must be running for real time entries to be created in Sage Inventory Management module > Main > Pallet ID Inquiry



Where the goes in Sage

