



Disassemble Pallets

Contents

Sales.Scanco.com Portal Settings.....	2
Accessing the Application	3
Pallet ID prompt	4
Send data collected	5
Send Completed	5
Sage Unattended Barcode Transaction Import	6
Where the goes in Sage	6

Scanco Support Email - support@scanco.com
Scanco Support Phone number - 330-645-9959 Opt. 3



Sales.Scanco.com Portal Settings

The 'Pallets' tab options:

Allow Pallet Activities: must be enabled.

Allow Disassembly of Pallets: to allow access the program.

- Allow Pallet Activities
- Allow Create New Pallets
- Allow Pallet Transfers
- Allow Disassembly of Pallets
- Allow Assembling Pallets on Pallets



Accessing the Application

For Companies that have Multibin License Plating, press the Advanced icon.

The 'Disassemble Pallet' icon will start the program.



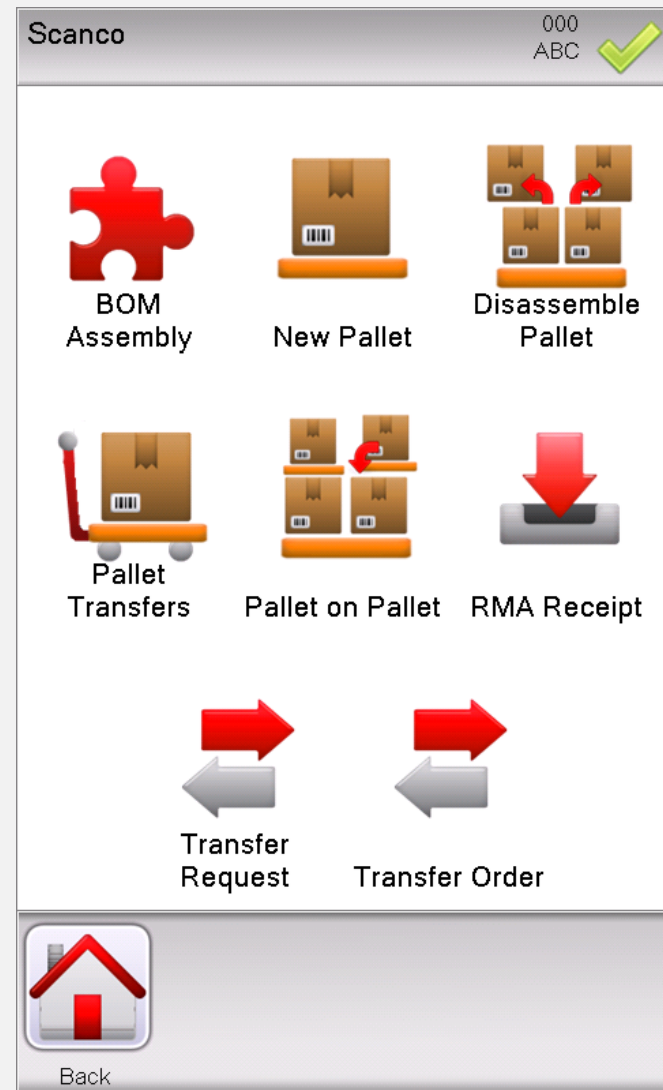
Buttons at bottom:

Exit: to exit Scanco Warehouse.

Send: to send all data collected in all applications.

Setting: to adjust settings.

Logout: to change users or companies.





Pallet ID prompt

Scan, key in or lookup Pallet ID to advance.

Disassemble Pallet 000
ABC

Pallet No

Review

Back

Keys

Lookup

Enter

Buttons at bottom:
Back: to move back to Main Applications screen.
Keys: for on-screen keyboard.
Lookup: for seeing all available Pallet IDs.
Send: to send all data collected.
Enter: press after keying in data at Batch prompt.

Pallet	Details
4S0000000000002	Type: 4S Warehouse: 000
4S0000000000003	Type: 4S Warehouse: 000
4S0000000000004	Type: 4S Warehouse: 000
4S0000000000005	Type: 4S Warehouse: 000
4S0000000000006	Type: 4S Warehouse: 000
4S0000000000007	Type: 4S Warehouse: 000
4S0000000000008	Type: 4S Warehouse: 000
CAS0000000000043	Type: CASE Warehouse: 001
CAS0000000000046	Type: CASE Warehouse: 000
CAS0000000000047	Type: CASE Warehouse: 000
CAS0000000000048	Type: CASE Warehouse: 000
CAS0000000000049	Type: CASE Warehouse: 000
CAS0000000000051	Type: CASE Warehouse: 000
CAS0000000000052	Type: CASE Warehouse: 000

OK

Cancel



Send data collected

The 'Send' button at the Pallet ID prompt should be pressed periodically.

Disassemble Pallet 000 ABC ✓

Pallet No 4S0000000000002

Break Pallet
'4S4S0000000000002' down?
NOTE: All items will be added
back into the bin where the Pallet
was located.

Yes No

Review

Back Keys Lookup Enter

Buttons on Send confirmation pop-up:

Yes: will send data collected to Sage to be imported.

No: to cancel send.

Send Completed

Press 'Ok' on the confirmation message to continue.

Disassemble Pallet 000 ABC ✓

Pallet No

Collected data was successfully
submitted for 1 record(s).

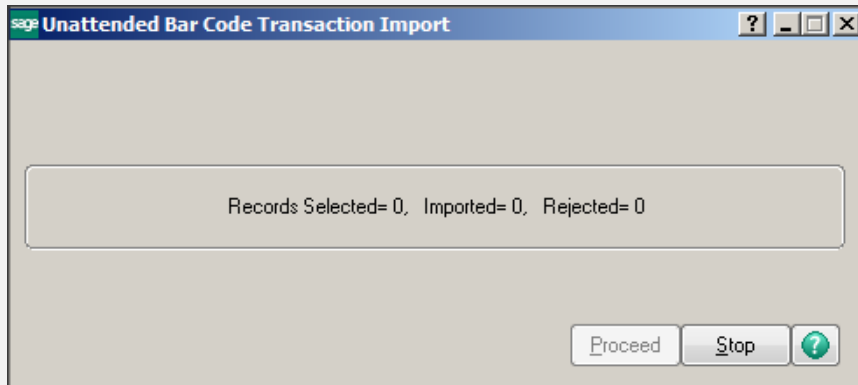
OK

Review

Back Keys Lookup Enter



Sage Unattended Barcode Transaction Import: must be running for real time entries to be created in Sage Inventory Management module > Main > Pallet ID Inquiry



Where the goes in Sage

The pallet will not include any items after this process is completed.

