

Scanco



...the power of intelligent scanning

Page - 1 -

Scanco MP2 Installation & Setup Guide

OVERVIEW

System Requirements:

Software: Microsoft .NET Framework 4.5, Scanco ConnectIt must be installed on the server.

Installation:

Run the Windows Installer obtained from Scanco.

Support Information:

Contact:

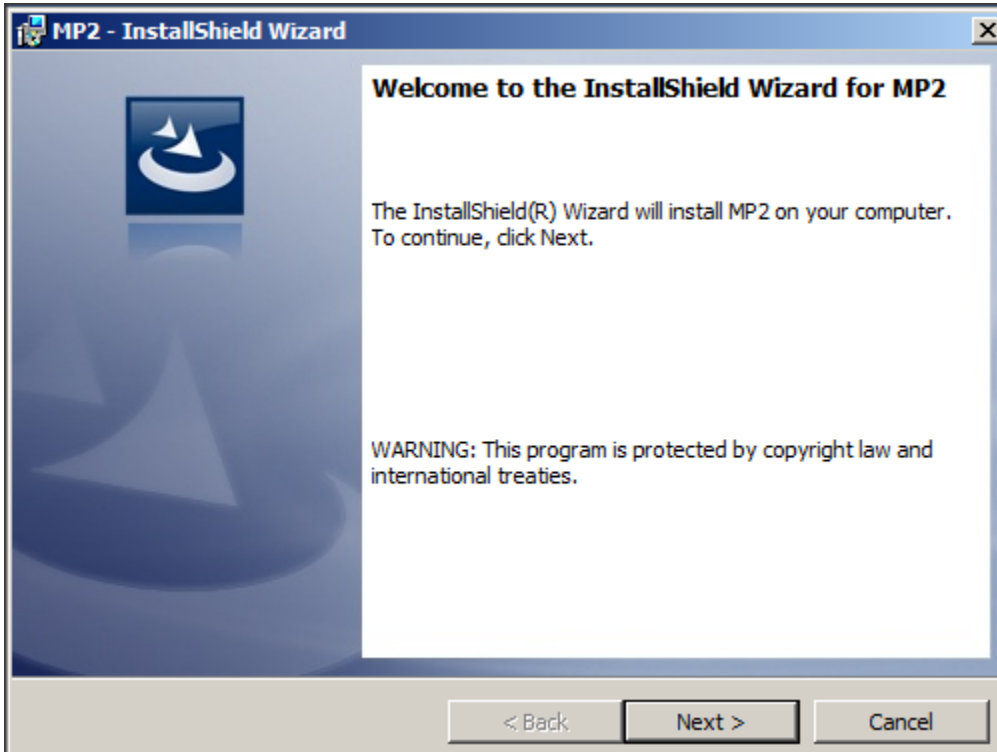
Email: techsupport@scanco.com

Phone: (330) 645-9969

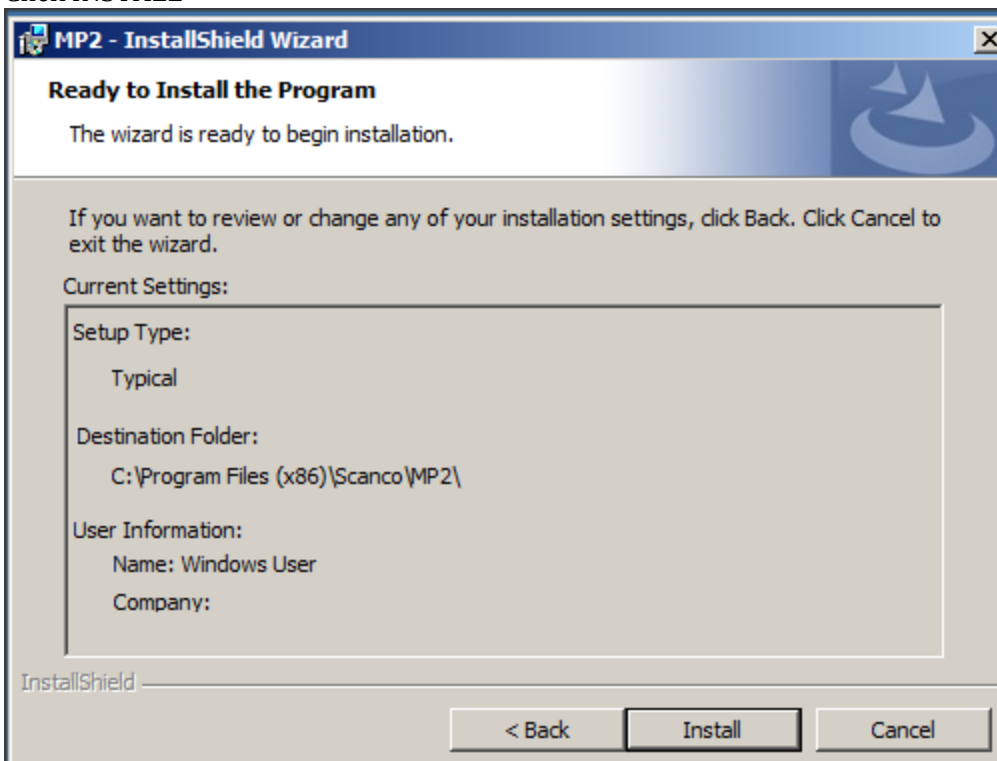
INSTALLING MP2

Run the Windows Installer obtained from Scanco.

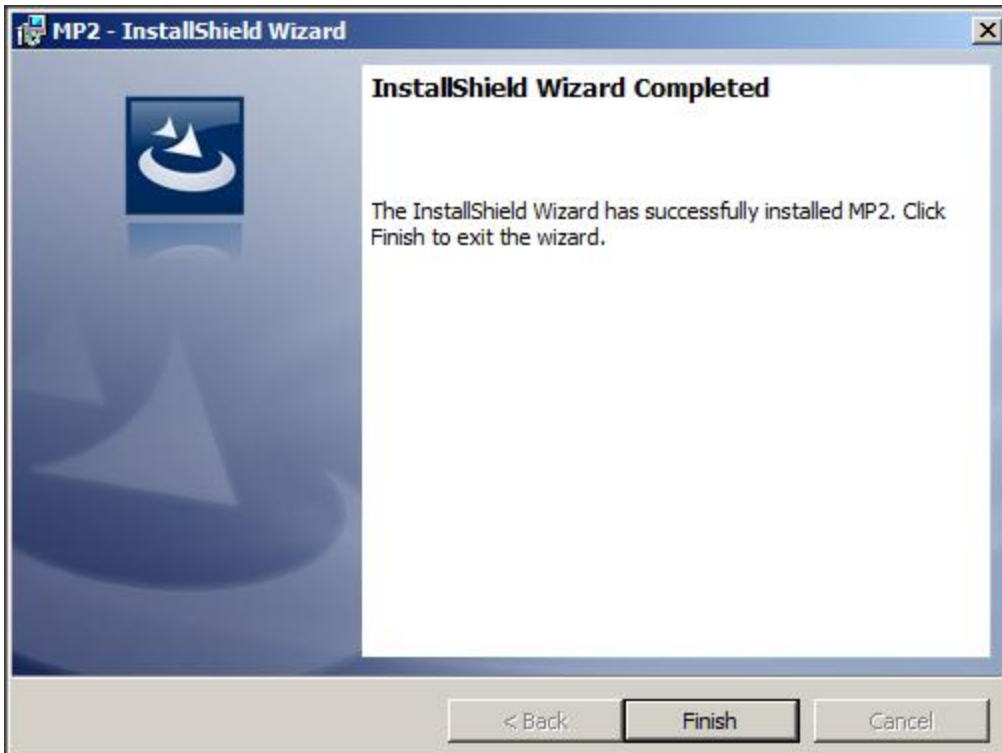
Click NEXT



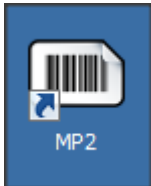
Click INSTALL



Click FINISH



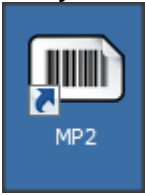
An icon will be placed on the Desktop, and, a Scanco Programs folder will be added to the Start Menu:



Continued on next page.

MP2 SETUP

Run your Desktop Icon



You will be prompted by the setup screen

A screenshot of the 'MP2 Setup' dialog box. The window title is 'Setup'. The main title is 'MP2 Setup:'. There are four tabs: 'Required', 'Keyboard Prompts', 'UDF's', and 'Other'. The 'Required' tab is selected. The dialog contains several input fields and buttons. 'Default Printer:' is a dropdown menu with 'Report1' selected. 'ConnectIt Address:' is a text box with '192.168.1.140'. 'Label Path:' is a text box with 'C:\Program Files (x86)\Scanco\MP2\Labels' and a 'Browse' button. 'Unlocking Code:' is a text box with '70057000547' and a 'Validate' button. At the bottom right are 'Cancel' and 'Accept' buttons. An 'Info' button is at the bottom left.

- Select a default printer to be used for Printing (the one created in the previous step).
- ConnectIt address: your Sage server.
- Port: will be the port that ConnectIt is listening on.
- Optional: Change the Label Path where the Label Designs reside. If multiple PC's require access to the same labels, a Network Path is preferred. Note: The folder requires full permissions to read/write/delete.
- Input the Unlocking Code to License the program. Contact Scanco for the Unlocking Code. The Validate button is not necessary, however, it will verify if the Unlocking Code is correct.

Keyboard Prompt fields

Keyboard Prompt fields are for adding 'on-demand information' to the labels as they are printed. Users are 'prompted' for additional information when printing labels if the 'Prompt Me' for Print Quantity option is selected. The information collected is made available to the Labels.

Example: UPS TRACKING NUMBER might be a prompt. This gives the user an opportunity to input the tracking number and have it printed on the Label.

The screenshot shows a Windows-style dialog box titled "Setup" with a sub-title "MP2 Setup:". It has four tabs: "Required", "Keyboard Prompts", "UDFs", and "Other". The "Keyboard Prompts" tab is active. The dialog is divided into two columns: "Global Prompt: For Entire Printjob" and "Line Prompts: For Each Item".

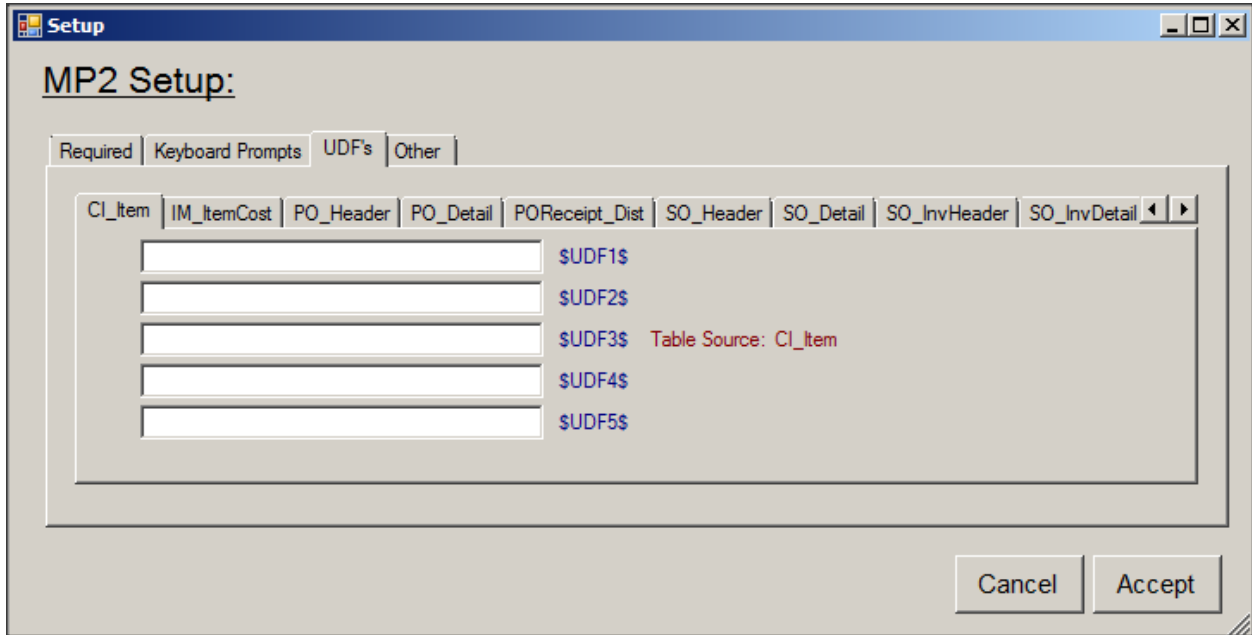
Global Prompt: For Entire Printjob		Line Prompts: For Each Item	
1:	<input type="text"/> \$GLOBAL1\$	1:	<input type="text"/> \$LABDES1\$
2:	<input type="text"/> \$GLOBAL2\$	2:	<input type="text"/> \$LABDES2\$
3:	<input type="text"/> \$GLOBAL3\$	3:	<input type="text"/> \$LABDES3\$
4:	<input type="text"/> \$GLOBAL4\$	4:	<input type="text"/> \$LABDES4\$
5:	<input type="text"/> \$GLOBAL5\$	5:	<input type="text"/> \$LABDES5\$

At the bottom right of the dialog are "Cancel" and "Accept" buttons.

Continued on next page.

UDF's

UDF's are accessible from MP2. Up to 5 fields in the CI_Item table are supported. Input the EXACT fieldname from the CI_Item table. Ex: UDF_COLOR



The screenshot shows a window titled "Setup" with a sub-header "MP2 Setup:". Below the sub-header are four tabs: "Required", "Keyboard Prompts", "UDF's", and "Other". The "UDF's" tab is selected. Inside this tab, there is a list of tables: "CI_Item", "IM_ItemCost", "PO_Header", "PO_Detail", "POReceipt_Dist", "SO_Header", "SO_Detail", "SO_InvHeader", and "SO_InvDetail". The "CI_Item" table is selected. Below the table list, there are five input fields, each followed by a label: "SUDF1\$", "SUDF2\$", "SUDF3\$", "SUDF4\$", and "SUDF5\$". The "SUDF3\$" label has a red text annotation "Table Source: CI_Item" next to it. At the bottom right of the dialog box are "Cancel" and "Accept" buttons.

Continued on next page.

MP2 Label Subs

Use the codes below to change the information that prints on your labels.

Not all subs work on all Tabs. Example: \$QTY_REC\$ would not work for SO printing.

<u>Description</u>		<u>Data to Print</u>
Print Qty	-	\$NO_LBLS\$
Item #	-	\$ITEM_NO\$
Item Desc	-	\$ITEM_DESC\$
Lot or Serial	-	\$SER_NUM\$
Bin	-	\$BIN_LOC\$
Warehouse	-	\$WARECOD\$
Date	-	\$SYSDATE\$
Maximum OH Qty:	-	\$MAX_OH_QTY\$
Global KB Prompt 1	-	\$GLOBAL1\$
Global KB Prompt 2	-	\$GLOBAL2\$
Global KB Prompt 3	-	\$GLOBAL3\$
Global KB Prompt 4	-	\$GLOBAL4\$
Global KB Prompt 5	-	\$GLOBAL5\$
Detail KB Prompt 1	-	\$LABDES1\$
Detail KB Prompt 2	-	\$LABDES2\$
Detail KB Prompt 3	-	\$LABDES3\$
Detail KB Prompt 4	-	\$LABDES4\$
Detail KB Prompt 5	-	\$LABDES5\$
CI Item UDF1	-	\$UDF1\$
CI Item UDF2	-	\$UDF2\$
CI Item UDF3	-	\$UDF3\$
CI Item UDF4	-	\$UDF4\$
CI Item UDF5	-	\$UDF5\$
IM Cost UDF1	-	\$UDF_ITEMCOST1\$
IM Cost UDF2	-	\$UDF_ITEMCOST2\$
IM Cost UDF3	-	\$UDF_ITEMCOST3\$
IM Cost UDF4	-	\$UDF_ITEMCOST4\$
IM Cost UDF5	-	\$UDF_ITEMCOST5\$
PO Header UDF 1	-	\$UDF_PO_HEADER1\$
PO Header UDF 2	-	\$UDF_PO_HEADER2\$
PO Header UDF 3	-	\$UDF_PO_HEADER3\$
PO Header UDF 4	-	\$UDF_PO_HEADER4\$
PO Header UDF 5	-	\$UDF_PO_HEADER5\$
PO Detail UDF 1	-	\$UDF_PO_DETAIL1\$
PO Detail UDF 2	-	\$UDF_PO_DETAIL2\$
PO DETAIL UDF 3	-	\$UDF_PO_DETAIL3\$
PO DETAIL UDF 4	-	\$UDF_PO_DETAIL4\$
PO DETAIL UDF 5	-	\$UDF_PO_DETAIL5\$
PO DIST UDF 1	-	\$UDF_PO_DIST1\$
PO DIST UDF 2	-	\$UDF_PO_DIST2\$
PO DIST UDF 3	-	\$UDF_PO_DIST3\$
PO DIST UDF 4	-	\$UDF_PO_DIST4\$
PO DIST UDF 5	-	\$UDF_PO_DIST5\$
SO_HEADER1	-	\$UDF_SO_HEADER1\$
SO_HEADER2	-	\$UDF_SO_HEADER2\$
SO_HEADER3	-	\$UDF_SO_HEADER3\$

SO_HEADER4	-	\$UDF_SO_HEADER4\$
SO_HEADER5	-	\$UDF_SO_HEADER5\$
SO_DETAIL1	-	\$UDF_SO_DETAIL1\$
SO_DETAIL2	-	\$UDF_SO_DETAIL2\$
SO_DETAIL3	-	\$UDF_SO_DETAIL3\$
SO_DETAIL4	-	\$UDF_SO_DETAIL4\$
SO_DETAIL5	-	\$UDF_SO_DETAIL5\$
WO_MASTER1	-	\$UDF_WO_MASTER1\$
WO_MASTER2	-	\$UDF_WO_MASTER2\$
WO_MASTER3	-	\$UDF_WO_MASTER3\$
WO_MASTER4	-	\$UDF_WO_MASTER4\$
WO_MASTER5	-	\$UDF_WO_MASTER5\$
WO_MATERIAL1	-	\$UDF_WO_MATERIAL1\$
WO_MATERIAL2	-	\$UDF_WO_MATERIAL2\$
WO_MATERIAL3	-	\$UDF_WO_MATERIAL3\$
WO_MATERIAL4	-	\$UDF_WO_MATERIAL4\$
WO_MATERIAL5	-	\$UDF_WO_MATERIAL5\$
INV_HEADER1	-	\$UDF_INV_HEADER1\$
INV_HEADER2	-	\$UDF_INV_HEADER2\$
INV_HEADER3	-	\$UDF_INV_HEADER3\$
INV_HEADER4	-	\$UDF_INV_HEADER4\$
INV_HEADERS5	-	\$UDF_INV_HEADERS5\$
INV_DETAIL1	-	\$UDF_INV_DETAIL1\$
INV_DETAIL2	-	\$UDF_INV_DETAIL2\$
INV_DETAIL3	-	\$UDF_INV_DETAIL3\$
INV_DETAIL4	-	\$UDF_INV_DETAIL4\$
INV_DETAIL5	-	\$UDF_INV_DETAIL5\$
YYMMDD	-	\$YYMMDD\$
QTY ORD	-	\$QTY_ORD\$
Receipts	-	\$QTY_REC\$
Time	-	\$SYSTIME\$
Customer Alias_DESC	-	\$C_ALIAS_DESC\$
EXT DESC1	-	\$ITEM_DESC_EXT1\$
EXT DESC2	-	\$ITEM_DESC_EXT2\$
EXT DESC3	-	\$ITEM_DESC_EXT3\$
EXT DESC4	-	\$ITEM_DESC_EXT4\$
EXT DESC5	-	\$ITEM_DESC_EXT5\$
EXT DESC6	-	\$ITEM_DESC_EXT6\$
EXT DESC7	-	\$ITEM_DESC_EXT7\$
EXT DESC8	-	\$ITEM_DESC_EXT8\$
EXT DESC9	-	\$ITEM_DESC_EXT9\$
EXT DESC10	-	\$ITEM_DESC_EXT10\$
EXT DESC11	-	\$ITEM_DESC_EXT11\$
EXT DESC12	-	\$ITEM_DESC_EXT12\$
EXT DESC13	-	\$ITEM_DESC_EXT13\$
EXT DESC14	-	\$ITEM_DESC_EXT14\$
EXT DESC15	-	\$ITEM_DESC_EXT15\$
Sales UOM	-	\$SLS_UOM\$
Purchase UOM	-	\$PUR_UOM\$
Standard UOM	-	\$STD_UOM\$
Category 1	-	\$USERDF1\$
Category 2	-	\$USERDF2\$
Category 3	-	\$USERDF3\$

Category 4	-	\$USERDF4\$
Standard Price	-	\$STD_PRICE\$
Vendor Alias	-	\$V_ALIAS\$
General Alias	-	\$G_ALIAS\$
Customer Alias	-	\$C_ALIAS\$
PO #	-	\$PURCHNO\$
Receipt #	-	\$RECPTNO\$
Job #	-	\$JOB_NUM\$
Qty Received	-	\$QTY_REC\$
Order #	-	\$ORDERNO\$
Customer PO#	-	\$CUST_PO\$
Qty Ordered	-	\$QTY_ORD\$
AR Division	-	\$ARDIVISIONNO\$
Bill To Name	-	\$BILLTONAME\$
Bill To Address1	-	\$BILLTOADDRESS1\$
Bill To Address2	-	\$BILLTOADDRESS2\$
Bill To Address3	-	\$BILLTOADDRESS3\$
Bill To City	-	\$BILLTOCITY\$
Bill To State	-	\$BILLTOSTATE\$
Bill To Zip	-	\$BILLTOZIPCODE\$
Bill To Country	-	\$BILLTOCOUNTRYCODE\$
Ship To Name	-	\$SHIPTONAME\$
Ship To Addr1	-	\$SHIPTOADDRESS1\$
Ship To Addr2	-	\$SHIPTOADDRESS2\$
Ship To Addr3	-	\$SHIPTOADDRESS3\$
Ship To City	-	\$SHIPTOCITY\$
Ship To State	-	\$SHIPTOSTATE\$
Ship To Zip	-	\$SHIPTOZIPCODE\$
Ship To Country	-	\$SHIPTOCOUNTRYCODE\$
Ship Via	-	\$SHIPVIA\$
Invoice #	-	\$INVOICE\$
Qty Shipped	-	\$QTY_SHP\$
BOX	-	\$BOX\$
BOX_TOTAL	-	\$BOX_TOTAL\$
Bill Number	-	\$BILL\$
Bill Revision	-	\$REVISION\$
Bill Description	-	\$BILL_DESC\$
Bill Component	-	\$COMPONENT\$
Bill Comp. Desc	-	\$COMPONENT_DESC\$
Bill Comp. Qty	-	\$QTY_PER_BILL\$