



Contents

Sales.Scanco.com Portal Settings.....	2
Accessing the Application	3
Batch number prompt - Optional.....	4
Warehouse Prompt	5
Issues to Jobs.....	6
Cost Code	7
GL Prompt	8
Item Entry Prompt.....	9
Quantity Prompt.....	10
Lot Prompt.....	11
Lot Quantity Prompt.....	11
Serial Prompt.....	12
Serial Prompt "Qty Scanned" Display	12
Send data collected	13
Send Completed	13
Sage Unattended Barcode Transaction Import	14
Sage Transaction Entry:	14

Scanco Support Email - support@scanco.com
Scanco Support Phone number - 330-645-9959 Opt. 3



Sales.Scanco.com Portal Settings

The Job Issues tab options:

Allow Job Issues Activities: Enabling this option would allow access to the Job Issues application.

Allow Batches: enables the batch prompt.

Default GL Account: This option is for Issues to Jobs [Jobs Cost module required] Fill this prompt with the GL account you want to fill in on the scanner. Leave this prompt empty to fill in the GL prompt on the scanner with the Item's Product line 'Cost of Goods' account.

Allow Inventory Issues Activities

Allow Batches Scan Each

Allow Job Issues

Default GL Account For Job Cost

Scan Each

- “No scan each” will remove the ‘Each’ button shown at the item prompt.
- “Allow Scan Each” will display the button and the user can turn it on/off.
- “Scan Each Always Enabled” will enable the button and the user cannot turn it off.

Scan Each

- No Scan Each
- Allow Scan Each
- Scan Each Always Enabled



Accessing the Application

Press 'Inventory' icon at the main applications screen to move to the Inventory applications screen.

Press 'Job Issues' icon in the Inventory applications screen to begin the program.



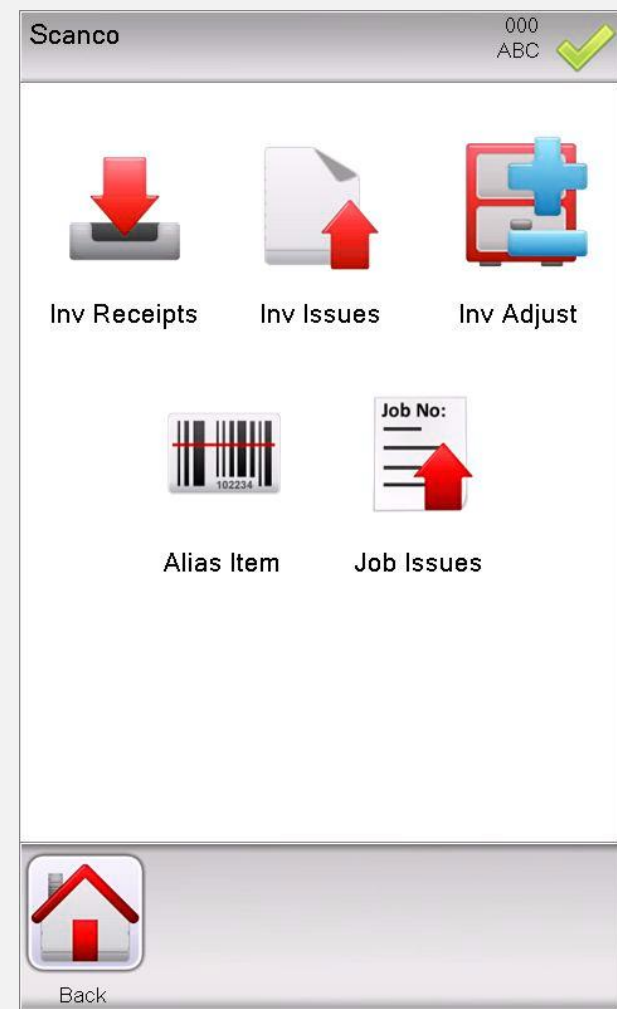
Buttons

Exit: to exit Scanco Warehouse.

Send: to send all data collected in all applications.

Setting: to adjust settings.

Logout: to change users or companies.





Batch number prompt - Optional

The batch prompt all entry of up to 5 alpha number.

Examples: A12, 12345

The screenshot shows a mobile application interface titled "Job Issues". In the top right corner, there is a status indicator "000 ABC" and a green checkmark icon. Below the title bar is a text input field labeled "Batch #" with a red background. At the bottom of the screen, there is a navigation bar with four icons: a red house icon labeled "Back", a keyboard icon labeled "Keys", a magnifying glass icon labeled "Lookup", and a red arrow icon labeled "Enter".

Buttons

Back: to move back to Main Applications screen.

Keys: for on-screen keyboard.

Lookup: for seeing all available Batch number in use in Sage.

Enter: press after keying in data at Batch prompt.

Batch	Description
00001	
00004	

The screenshot shows a table with two columns: "Batch" and "Description". The table contains two rows of data: "00001" and "00004". Below the table, there are two buttons: a green "OK" button and a red "Cancel" button.



Warehouse Prompt

Scan or Key in any valid warehouse code, or use lookup button to select one from a list. This prompt will pre-fill with your default warehouse that is setup in the Scanco portal.

Default Warehouse
000 - ABC CENTRAL WAREHOUSE ▾

Job Issues 000
ABC ✓

Batch # 00010

Warehouse 000

Back Keys Lookup Enter

Buttons

Back: to move back to Main Applications screen.

Keys: for on-screen keyboard.

Lookup: for seeing all available Warehouses accessible for use.

Enter: press after keying in data at Warehouse prompt.


Warehouse	Details
000	CENTRAL WAREHOUSE
001	EAST WAREHOUSE
002	WEST WAREHOUSE
002	WEST WAREHOUSE
003	003
003	003
004	004
005	005
006	006
007	007
008	008
009	009
010	010
011	011
012	012
097	RETURNS WAREHOUSE
098	SCRAP WAREHOUSE
099	REPAIR WAREHOUSE
RTL	RTL MP2




OK Cancel



Issues to Jobs [Jobs Cost module required]

Scan or Key in any valid Job code, or use lookup button to select one from a list.

Job Issues		000 ABC 
Batch #	00010	
Warehouse	000 CENTRAL WAREH	
Job	<input type="text"/>	



Back Keys Lookup Enter

Buttons

Back: to move back to Main Applications screen.

Keys: for on-screen keyboard.

Lookup: for seeing all available Jobs.

Enter: press after keying in data at Warehouse prompt.

Job	Details
0000001	JOB DESC HERE
0000465	



OK Cancel



Cost Code [Jobs Cost module required]

Scan or Key in any valid warehouse code, or use lookup button to select one from a list.

Job Issues		000 ABC	✓
Batch #	00010		
Warehouse	000 CENTRAL WAREH		
Job	0000001		
Cost Code			

Back	Keys	Lookup	Enter

Buttons

Back: to move back to Main Applications screen.

Keys: for on-screen keyboard.

Lookup: for seeing all available Cost Codes.

Enter: press after keying in data at Warehouse prompt.

Cost	Details
001000000	Billing Rate: 0 Unit Cost: 0 Unit of Meas: AND
002000000	Billing Rate: 0 Unit Cost: 0 Unit of Meas: AND
003000000	Billing Rate: 0 Unit Cost: 0 Unit of Meas: AND
500050000	Billing Rate: 0 Unit Cost: 1230 Unit of Meas: AND

OK	Cancel
----	--------



GL Prompt [Jobs Cost module required]
Scan or Key in any valid General Ledger Account, or
use lookup button to select one from a list.

Job Issues		000 ABC	✓
Batch #	00010		
Warehouse	000 CENTRAL WAREH		
Job	0000001		
Cost Code	500050000		
GL	101-03-00		

Back Keys Lookup Enter

GLAccount
100-00-00
100-00-A
101-01-00
101-02-00
101-03-00
105-00-01
105-00-02
110-01-00
111-00-00
115-00-01
115-00-02
115-00-03
115-01-00
116-00-00
117-00-00
118-00-00
120-00-00
125-00-00
130-00-00
150-00-00

OK Cancel

sage* Item Maintenance (ABC) 4/30/2016

Item Code #3

Description PRINTER STA

1. Main 2. Ad

Product Line PS&A

Product Type Finished

Valuation Average

Procurement Buy

Price Code

Default Whse 000

sage Product Line Maintenance (ABC) 4/30/2016

Product Line PS&A

Description PRINTER SUPPLIES & ACCESS

1. Main 2. Accounts

Account	G/L Account No.
Inventory	115-00-03
Cost of Goods Sold	450-01-00
Sales/Income	400-01-00



Item Entry Prompt

Scan, key in or lookup Items codes.

Job Issues		000 ABC	
Batch #	00010		
Warehouse	000 CENTRAL WAREH		
Job	0000001		
Cost Code	500050000		
GL	100-00-00		
Item	<div style="background-color: red; width: 100px; height: 15px;"></div>		

Review

Back

Each

Keys

Print

Submit

Lookup

Enter

Buttons

Review: to enter review mode.

Back: to move back to Main Applications screen.

Each: available if 'Scan Each' is enabled in the Scanco Portal.

Keys: for on-screen keyboard.

Print: Requires SkyPrint

Send: to send all data collected.

Lookup: for seeing all available Item for use.

Enter: press after keying in data at Item prompt.

Item Lookup

The Item lookup will show all Items in you warehouse.

Item	Details
1001-HON-H252	HON 2 DRAWER LETTER FLE W/O LK
1001-HON-H252LK	HON 2 DRAWER LETTER FLE W/ LCK
1001-HON-H254	HON 4 DRAWER LETTER FLE W/O LK
1001-HON-H254LK	HON 4 DRAWER LETTER FLE W/ LCK
2480-8-50	DESK FILE 8" CAP 50
2481-5-50	DESK FILE 5 1/4" CAP 50
2551-3-50	DESK FILE 3 1/2" CAP 50
2568-3-25	DESK FILE 3 1/2" CAP 25
4886-18-14-3	PAPER CADDY 18"W 14"D 3"H
6650-26-16-11	SOUND CVR 26"W 16"D 11"H DM
6652-28-24-15	SOUND CVR 28"W 24"D 15"H LQ
6655	PRINTER STAND W/ BASKET
6657-24-20-12	SOUND CVR 24.5"W 20"D 12"H LQ
8953	UNIVERSAL 3 1/2" SSDD FLEX DSK
8971	UNIVERSAL 5 1/4" SSDD FLEX DSK
8972	UNIVERSAL 5 1/4" DSDD FLEX DSK
8973	UNIVERSAL 5 1/4" DSHD FLEX

OK

Cancel



Quantity Prompt

Scan or key in positive numeric quantity are accepted at the quantity prompt.

Buttons

Back: to move back to Main Applications screen.


Keys: for on-screen keyboard.


Enter: press after keying in data at Quantity prompt.


Job Issues		000 ABC	✓
Batch #	00010		
Warehouse	000 CENTRAL WAREH		
Job	0000001		
Cost Code	500050000		
GL	100-00-00		
Item	000-6655		
<i>STAR TREK - LOST PHOTOGRAP</i>			
UOM	EACH		
Quantity	<input type="text"/>		

1 2 3 4 5 6 7 8 9 0

ABC Bksp . - ▲ Enter


Back


Keys


Enter



Lot Prompt

Scan or key in lot numbers for lot controlled valuation product.

Job Issues		000 ABC	✓
Batch #	00010		
Warehouse	000 CENTRAL WAREH		
Job	0000001		
Cost Code	500050000		
GL	100-00-00		
Item	2551-3-50		
<i>DESK FILE 3 1/2" CAP 50</i>			
UOM	EACH		
Lot	<input type="text"/>		

Back Keys Print Lookup Enter

Buttons

Back: to move back to Main Applications screen.

Keys: for on-screen keyboard.

Enter: press after keying in data at Lot prompt.

Lot Quantity Prompt

Scan or key in positive numeric quantity.

Buttons

Back: to move back to Main Applications screen.

Keys: for on-screen keyboard.

Enter: press after keying in data at Lot prompt.

Job Issues		000 ABC	✓
warehouse	000 CENTRAL WAREH		
Job	0000001		
Cost Code	500050000		
GL	100-00-00		
Item	2551-3-50		
<i>DESK FILE 3 1/2" CAP 50</i>			
UOM	EACH		
Lot	JAN10		
Quantity	<input type="text"/>		

Back Keys Enter



Serial Prompt

Scan or key in serial numbers for serialized valuation product. As serials numbers are collected the “Qty Scanned” field will accumulate +1 for each serials number collected.

Job Issues		000 ABC	✓
Batch #	00010		
Warehouse	000 CENTRAL WAREH		
Job	0000001		
Cost Code	500050000		
GL	100-00-00		
Item	GB-MD788		
<i>MODEM 300 (AUTO-ANSWER)</i>			
UOM	EACH		
Qty Scanned			
Serial			

Back Keys Print Submit Lookup Enter

Buttons

Back: to move back to Main Applications screen.

Keys: for on-screen keyboard.

Send: to send all data collected.

Enter: press after keying in data at Item prompt.

Serial Prompt “Qty Scanned” Display

As shown on the right after the first serials number is collected, the “Qty Scanned” field has accumulated +1.

Job Issues		000 ABC	✓
Batch #	00010		
Warehouse	000 CENTRAL WAREH		
Job	0000001		
Cost Code	500050000		
GL	100-00-00		
Item	GB-MD788		
<i>MODEM 300 (AUTO-ANSWER)</i>			
UOM	EACH		
Qty Scanned	1		
Serial			

Back Keys Print Submit Lookup Enter



Send data collected

The 'Send' button at the item prompt should be pressed when all items have been collected.

Job Issues 000
ABC

Batch # 00010

Warehouse 000 | CENTRAL WAREH

Job 0000001

Cost C

GL

Item

UOM

Qty Sc

Serial

Do you want to submit the items you have issued to the server?

Back Keys Print Submit Lookup Enter

Buttons

Yes: will remove the data display.

No: to move to data collection mode.

Send Completed

Press 'Ok' on this confirmation message to continue.

Job Issues 000
ABC

Batch # 00010

Warehouse 000 | CENTRAL WAREH

Job 0000001

Cost C

GL

Item

UOM

Qty Sc

Serial

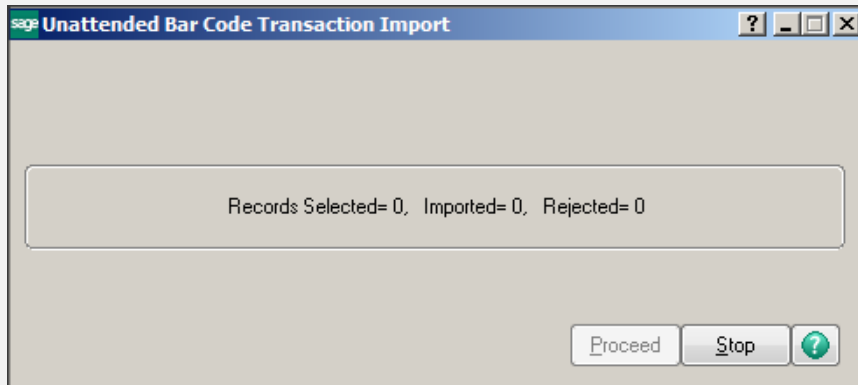
Collected data was successfully submitted for 2 record(s).

WARNING! The Unattended Import does not appear to be running and any records submitted will not get imported into MAS until it is started.

Back Keys Print Submit Lookup Enter



Sage Unattended Barcode Transaction Import: must be running for real time entries to be created in Sage Inventory Management module > Main > Transaction Entry



Sage Transaction Entry: Results of scanner entries will be found in Sage Sales Order module > Main > Invoice Data Entry.

