

# PROMPT ALCHEMY

665 Secrets to Stunning AI Art

The Ultimate Visual Reference for Image Generation

---

## SAMPLE CHAPTER

Preview Edition

---

*Bennix XU*

2024 Edition

# Contents

About This Sample	3
1 Sample Gallery	4
Delivery Person Portrait . . . . .	4
Style . . . . .	5
3D Character Landscape . . . . .	6
3D Architecture Cartoon . . . . .	8
Portrait . . . . .	9
Character Fashion Nature . . . . .	10
Portrait . . . . .	11
3X3 Style . . . . .	12
Cartoon Fantasy Fashion . . . . .	14
Character Fashion Photography . . . . .	16

# About This Sample

This sample chapter showcases 10 carefully selected prompts from the complete collection of 665 AI art prompts. Each page features:

- **Visual Result:** The actual image generated from the prompt
- **Complete Prompt:** The full text used to create the image
- **Analysis:** Explanation of why the prompt techniques work
- **Tags:** Categories for easy reference

The full book contains all 665 prompts organized into 7 gallery chapters, complete with a comprehensive index for quick navigation.

---

## Chapter 1

# Sample Gallery

### Delivery Person Portrait



#### Prompt

Half-length portrait taken in a bright studio. The beautiful East Asian girl, with flawless skin like a porcelain doll and big twinkling eyes, is tilting her head playfully and gently touching the yellow bunny ears on her helmet with her hand. She was wearing a yellow takeout uniform with the Meituan logo. Use soft and even commercial studio lighting to create a fresh and energetic atmosphere. The background is dark and dark to highlight the subject. On the far right side of the picture, add a column of text "My life can be opened in another way." The font is similar to the photo style.

#### Why This Works

Style keywords create visual coherence by establishing a consistent artistic direction throughout the image. Lighting specifications define the mood: soft light for warmth, harsh shadows for drama, neon for futurism. Environment specification contextualizes the subject and adds narrative depth to the composition. Photographic terminology anchors the output in real-world visual expectations and physical accuracy.

**Tags:** *logo, photography, typography*

## Style



### Prompt

Please help me draw a diagram of the Mediterranean diet using the style of these three pictures.

### Why This Works

Style keywords create visual coherence by establishing a consistent artistic direction throughout the image.

**Tags:** *food*

## 3D Character Landscape



### Prompt

I wanted a photo that was super real, but the content was a little bit surreal. It felt like a child secretly saw a magical scene through the crack of the classroom door after school: Doraemon was actually in the empty classroom, like a little teacher, carefully preparing for chemistry class. The whole picture should be very realistic, but also full of fairy tale warmth and surprise.

Screen content

Subject: Doraemon himself, standing in front of the classroom podium, rather than drawn on the blackboard. He looks three-dimensional and has a smooth texture, like something out of an anime, but blends perfectly into the real environment. Character details: Doraemon is standing next to the podium, his body slightly sideways, his expression serious and friendly, as if he is thinking about how to teach Nobita and the others. He held a small pointer in one hand and pointed it at the blackboard behind him. His yellow bells reflected slightly in the classroom light, and the four-dimensional pocket on his belly looked bulging. Background detail (blackboard): On the blackboard behind him is a periodic table of chemical elements handwritten in various colors of chalk. This periodic table looks like it was just painted by Doraemon himself, with rich colors and a little cute style. You can use different colors of chalk (such as yellow, blue, pink) to distinguish different element areas to make the entire picture more colorful.

Text: On the top or in the corner of the blackboard, write the title: "Doraemon's Science Classroom" in cute chalk font. environment and composition Scene: An ordinary Japanese classroom, with tables and chairs neatly arranged, and the afterglow of the setting sun shining in through the windows, creating a quiet and warm atmosphere. Composition: The aspect ratio is 4:3. Viewed from the student's seat, Doraemon and the podium are in the center of the screen. Foreground: One or two students' desks and chairs can be brought to the front of the picture to make the perspective more immersive. A box of colored chalks and a blackboard eraser can be placed on the podium. Style and technical requirements Style: Photorealism. The key lies in the wonderful combination of the real environment, light and shadow, and the anime character Doraemon.

Light: Warm afternoon natural light slants in from the window. The light should naturally hit Doraemon, forming soft shadows and highlights on his round body, making him look voluminous, and casting a faint shadow around his feet, which can make him look more real. Focus: The focus should be clearly on Doraemon, and the content on the blackboard is also clear, but the desk in the foreground can be slightly blurry. Don't show up! Don't make Doraemon look like a plastic toy or model, he needs to be alive.

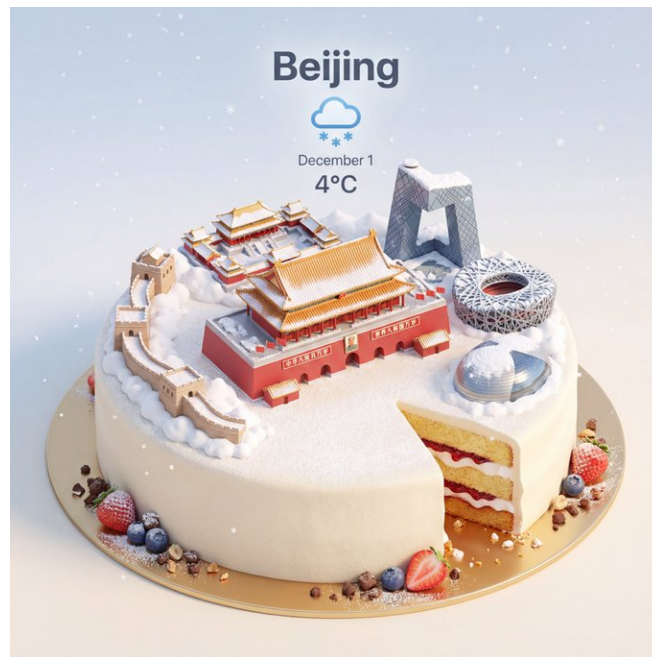
Don't have any other characters, especially Nobita and Shizuka. Don't turn the painting style into animation screenshots or pure CG, it must be like a photo. The composition should be stable and don't use weird low angles or fisheye lenses. The colors should not be too bright, but should match the colors under real light.

### Why This Works

3D terminology guides the AI toward depth, perspective, and volumetric rendering rather than flat illustration. Style keywords create visual coherence by establishing a consistent artistic direction throughout the image. Lighting specifications define the mood: soft light for warmth, harsh shadows for drama, neon for futurism. Color direction ensures visual harmony and emotional resonance through deliberate palette choices.

**Tags:** *3d, character, landscape, nature, portrait, toy, typography*

## 3D Architecture Cartoon



### Prompt

On top of a delicate round cream cake, a miniature 3D cartoon city scene of [city name] is presented with a clear 45° top-down isometric view, as if the city is a three-dimensional decoration placed on the cake. The cake is fully visible, including the top, edges and parts of the sides, with a golden round cake tray at the bottom. Place the [Core Landmark Name] in the center of the picture. It is significantly larger than other buildings and becomes the visual focus of the entire picture. The other city landmarks are arranged in a ring around it with a slightly lower height, forming a sense of hierarchy from the center outward. Must include [list of other representative buildings in the city, just write 3–5], drawn in a cute but easily identifiable miniature style. The surface of the cake serves as a city ground, surrounded by fruits (strawberries, blueberries, orange slices, etc.), chocolate chips and nut chips. You can cut a piece off one side of the cake to expose the internal layered structure and enhance the "deliciousness". The entire scene is in [weather type, for example: snowy winter day, rainy night, hot sunny day, seaside breeze]. The sky and light clearly represent this weather, while allowing the weather to act on the cake in the form of dessert: [Weather Effect 1: For example "Snow covers the roof and cake like icing"] [Weather Effect 2: For example "Rain resembles syrup and sugar beads, creating a shiny and flowing texture"] [Weather Effect 3: e.g. "The sun melts the cream slightly and creates soft highlights"] 3D isometric and rich in detail using soft yet delicate textures, realistic PBR materials, and soft, realistic light and shadow effects. In the top center of the screen, use a large bold English title "[CityName]", place a clear weather icon below it, and below it are the date (small text) and temperature (medium text). All text must be centered and spaced uniformly so that it overlaps slightly with the top of the central landmark but does not obscure the main outline. The overall composition is clean and minimalist, with a background of soft solid colors or slight gradients. Square image 1080x1080, high resolution, ultra-detail, soft lighting, global illumination, cinematic.

### Why This Works

Resolution keywords (8K, HD) signal the AI to produce maximum detail and clarity in the output. Cinematic references invoke professional film aesthetics: careful composition, dramatic lighting, and narrative depth. 3D terminology guides the AI toward depth, perspective, and volumetric rendering rather than flat illustration. Style keywords create visual coherence by establishing a consistent artistic direction throughout the image.

**Tags:** 3d, architecture, cartoon, landscape, minimalist



## Portrait



### Prompt

Creates an aerial image that blends into the sky above your location at latitudes 35.658807120369914, 139.74540071108495. Makes the specified person appear to blend into the image as if they have fallen from that location. A smiling, happy-looking man. A common, everyday photo taken with a low-resolution disposable camera. A grainy photo taken by a Japanese high school student.

### Why This Works

Resolution keywords (8K, HD) signal the AI to produce maximum detail and clarity in the output. Environment specification contextualizes the subject and adds narrative depth to the composition. Photographic terminology anchors the output in real-world visual expectations and physical accuracy. Subject specification ensures the AI focuses on the intended focal point with appropriate emphasis.

**Tags:** *portrait*

## Character Fashion Nature



### Prompt

```
{ "objective": "Generate an image based on a detailed character portrait description.", "image_generation_prompt": { "subject": { "gender": "female", "portrait_type": "close-up", "angle": "side angle", "aesthetic": "edgy, modern, mysterious, confident, slightly provocative" }, "appearance": { "hair": { "color": "light gray", "length": "short", "texture": "wavy", "style": "modern, slightly messy, partially covering forehead" }, "face": { "skin_tone": "fair", "features": "sharp", "eyebrows": "straight, neat, dark", "lips": "naturally pink with a slight sheen" }, "expression": "calm but intense" }, "clothing_and_accessories": { "headwear": "black bandana with white swirl patterns", "outfit": { "jacket": "black zip-up jacket, left open", "inner_shirt": "black T-shirt with green and red graphic art on the chest" }, "jewelry": { "neck": "thin silver chain", "ear": "small silver earring" } }, "lighting_and_background": { "lighting": "front light highlighting facial features and outfit", "background": "bright blue sky" }, "style": { "vibe": "striking and stylish", "focus": "expression and trendy fashion details", "mood": "modern and edgy" }, "aspect_ratio": "3:4" }, "response_format": "Use this JSON object as the structure for an image generation model prompt." }
```

### Why This Works

Style keywords create visual coherence by establishing a consistent artistic direction throughout the image. Lighting specifications define the mood: soft light for warmth, harsh shadows for drama, neon for futurism. Color direction ensures visual harmony and emotional resonance through deliberate palette choices. Close framing emphasizes texture, expression, and fine details that wider shots would miss.

**Tags:** *character, fashion, nature, portrait*

## Portrait



### Prompt

```
{ "prompt": "Ultra-close-up portrait of a stunning young East Asian woman with flawless porcelain skin, large sparkling dark brown eyes with long lashes, subtle pink blush, glossy red-tinted lips, long straight silky dark brown hair with subtle highlights, making a playful finger-frame gesture around one eye with both hands, extremely detailed long almond-shaped nails with glossy purple-marble and silver chrome galaxy nail art with tiny rhinestones, wearing black-and-white horizontal striped oversized knit sweater with ribbed cuffs, layered delicate silver necklaces with crystal pendants and small pink gems, soft studio lighting with bright white seamless background, high-fashion beauty editorial style, razor-sharp details, perfect skin texture with natural glow, shallow depth of field, shot on 85mm lens f/1.4, ultra-realistic photorealism, 8k, masterpiece, best quality", "negative_prompt": "blurry, low resolution, deformed hands, extra fingers, missing fingers, bad anatomy, ugly nails, cheap makeup, overexposed, underexposed, text, watermark, logo, cartoon, 3d render, plastic skin, doll face, cross-eyed, distorted proportions, old, child", "steps": 60, "cfg_scale": 7.5, "sampler": "DPM++ 2M Karras", "width": 832, "height": 1216, "seed": -1 }
```

### Why This Works

Resolution keywords (8K, HD) signal the AI to produce maximum detail and clarity in the output. 3D terminology guides the AI toward depth, perspective, and volumetric rendering rather than flat illustration. Style keywords create visual coherence by establishing a consistent artistic direction throughout the image. Lighting specifications define the mood: soft light for warmth, harsh shadows for drama, neon for futurism.

**Tags:** 3d, cartoon, fashion, logo, nature, photography, portrait, vehicle

## 3X3 Style



### Prompt

Subject and form: High-resolution modern Japanese photo-style collage created by two young female friends. Layout: A single image (9 frames total) consisting of a 3x3 grid. Theme: Christmas Style: Vivid, full-color, bright and dynamic reproduction of modern Japanese photo sticker lighting effects. Background: A simple solid color or theme color background (with delicate decorations such as small hearts). Photographic features: Each frame has a thin white or decorative border. Shallow depth of field (blurred). Themes and poses: Two young female friends, wearing matching outfits that fit the theme. Vivid, lively and bright expression. These nine images clearly depict nine different popular photo sticker poses from the list below.

9 different poses (3x3 grid): First line: "Hair-grabbing heart" gesture: one person playfully grabs the hair, and the other person gestures with both hands to make a small heart. Both were smiling. "Hands Heart" pose: Two partners use their hands to form a large heart shape in the center. A bright and happy smile was on his face. "Arm pinch" position: Two people cross their arms and one or both of them gently pinches the other person's cheek or arm. The expression is lively and full of joy. A close-up of the other person's face.

Second row: 4. "Arms crossed with a big heart" posture: The two people cross their arms and use their free hand to make a big heart. Smile bright and energetic. 5. "Heart of Commitment" gesture: One person makes a "finger oath" gesture, and the other person makes a small heart gesture with their hands. The smile is playful and warm. 6. "Hand in hand and love" posture: Two people hold hands and each use their free hand to express half a love to form a complete love. The smile is gentle and sweet.

Third row: 7. "Arms crossed and pout" posture: The two people cross their arms with a slightly exaggerated pout or a "smug" (or serious) expression, as if they are suppressing a smile. 8. "Hands together, cheeks close to each other" pose: Two people hold hands, place their hands on their cheeks, and draw a heart shape around their cheeks. The smile is cute and charming. 9. "Arms crossed, palms touching" posture: Two people cross their arms, and each person uses one hand to draw a small heart shape. Smile confidently and stylishly. Close-ups show their faces.

Other decorations: Multiple glowing neon hearts overlay. On each frame, letters related to the theme are written in neon style along the outer contour of the face. Add multiple different neon line art doodles to each panel that fit the theme (e.g. stars, arrows, saturated lines, flowers, animal ears, etc.). Major restrictions: All 9 photos must maintain strict consistency of subject, clothing, background style and lighting. Shallow depth of field is a typical feature of photo stickers. DO NOT: Add any text, logos, tags, watermarks, symbols, numbers or other text elements of any kind (other than the text elements and neon line art graffiti specified above).

### Why This Works

Resolution keywords (8K, HD) signal the AI to produce maximum detail and clarity in the output. Style keywords create visual coherence by establishing a consistent artistic direction throughout the image. Lighting specifications define the mood: soft light for warmth, harsh shadows for drama, neon for futurism. Color direction ensures visual harmony and emotional resonance through deliberate palette choices.

**Tags:** *animal, fashion, nature, neon, photography*



## Cartoon Fantasy Fashion



### Prompt

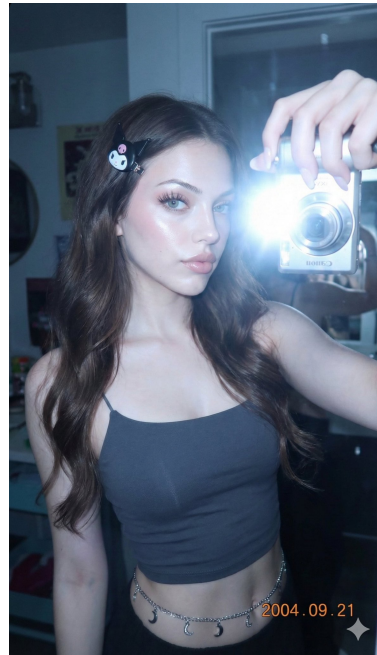
```
{ "title": "Hyper-Realistic Portrait: Suited Woman in Mugshot Pose", "description": "A high-resolution hyper-realistic 8K HD portrait photograph captured with a professional DSLR camera using a 50mm lens for natural depth of field and razor-sharp focus. Full-body composition mimicking an old-fashioned mugshot/police booking photo.", "subject": { "type": "woman", "features": { "likeness_reference": "attached image", "height": "tall", "build": "elegant", "facial_features": { "jawline": "sharp", "eyes": "intense", "expression": "confident, slightly smug smirk" }, "pose": "leaning against wall, one knee bent" }, "hair": { "style": "neat, straight, wavy or elegant updo", "appearance": "natural and well-groomed" }, "clothing": { "jacket": "vintage-style tailored dark pinstripe suit jacket", "inner_garment": "none", "tie": "slightly loosened, dark shade matching jacket", "accessories": [ { "type": "mugshot board", "text": { "name": "MIRA", "date": "17/5/62" } }, { "type": "shoe", "description": "single shiny dark-colored high-heeled shoe in right hand", "material": "patent leather" } ] }, "background": { "style": "naturally blurred bokeh", "texture": "slightly gritty studio wall", "details": { "height_chart": "vertical lines with numerical markings 2'0\" to 6'6\""}, "color_tone": "desaturated, slightly sepia-toned archival photograph aesthetic" }, "lighting": { "type": "clean, soft, balanced", "shadow": "accurate shadows and highlights", "direction": "strong overhead or frontal lighting emphasizing dramatic shadows and height chart lines" }, "framing": { "resolution": "1080x1350px (4:5)", "focus": "sharp subject focus", "composition": "full figure and mugshot details", "color_accuracy": "professional, natural tones" }, "style": "Hyper-realistic photography, 8K clarity, DSLR quality, accurate color grading, natural lens blur, vintage photo aesthetic, true-to-life detail", "watermark": "© xmiiru", "negative_prompt": [ "No anime", "No cartoon", "No digital painting", "No illustration", "No 3D render", "No CGI", "No stylized features", "No plastic/doll-like skin", "No fantasy glow", "No cinematic effects", "No airbrushed smoothing", "No overexposure", "No unnatural blur", "No video-game/Unreal Engine style", "No sketch", "No artificial lighting effects", "No unrealistic proportions/textures", "No multiple shoes", "No modern background elements" ] }
```

### Why This Works

Resolution keywords (8K, HD) signal the AI to produce maximum detail and clarity in the output. Cinematic references invoke professional film aesthetics: careful composition, dramatic lighting, and narrative depth. 3D terminology guides the AI toward depth, perspective, and volumetric rendering rather than flat illustration. Style keywords create visual coherence by establishing a consistent artistic direction throughout the image.

**Tags:** *cartoon, fantasy, fashion, gaming, illustration, interior, nature, photography, pixel, portrait, retro, vehicle*

## Character Fashion Photography



### Prompt

```
{ "image_generation_request": { "constraints": { "preservation_instruction": "Please keep my face 100% the same, do not change any facial details.", "strictness": "Critical" }, "technical_specifications": { "camera_device": "Canon IXY/IXUS digital camera", "aesthetic_style": [ "Y2K Digital Aesthetic", "Cyber Ulzzang", "Retro Japan-Korea look", "Early 2000s digital photograph" ], "lighting": { "source": "Strong front flash", "target": "Directly on face", "characteristics": "Bright white", "effect_on_skin": [ "Radiant", "Shiny", "Bright" ] }, "visual_grading": { "contrast": "High", "color_tone": "Slight cool blue", "atmosphere": [ "Mysterious", "Sharp" ] }, "composition": { "type": "Portrait", "meta_scene_element": "A reflection in the mirror shows another woman's hand taking the photo of the model" }, "subject_details": { "demographics": "Teenage girl", "physical_appearance": { "hair": { "color": "Dark brown", "texture": [ "Long", "Soft", "Wavy" ] }, "accessory": "Sanrio Kuromi hair clip", "eyes": { "description": "Bright", "contacts": "Blue-grey contact lenses" }, "skin": { "base_tone": "Fair", "undertone": "Slightly pink toned", "complexion": [ "Rosy glow", "Smooth" ] }, "body_features": "Clear, shapely waistline", "attire_and_accessories": { "top": "Dark grey spaghetti strap crop top", "belt": { "style": "Waist belt", "material": "Silver chain", "details": "Dangling moon charms" } }, "makeup": { "general_style": "Light pink makeup", "lashes": "Long eyelashes", "additional_descriptors": "thin and" } } } }
```

### Why This Works

Style keywords create visual coherence by establishing a consistent artistic direction throughout the image. Lighting specifications define the mood: soft light for warmth, harsh shadows for drama, neon for futurism. Color direction ensures visual harmony and emotional resonance through deliberate palette choices. Composition guidance creates visual balance and directs the viewer's eye through the image.

**Tags:** *character, fashion, photography, portrait, retro, sci-fi*



## **Get the Full Book**

665 Prompts • 720 Pages • Comprehensive Index

*Master the art of AI image generation*