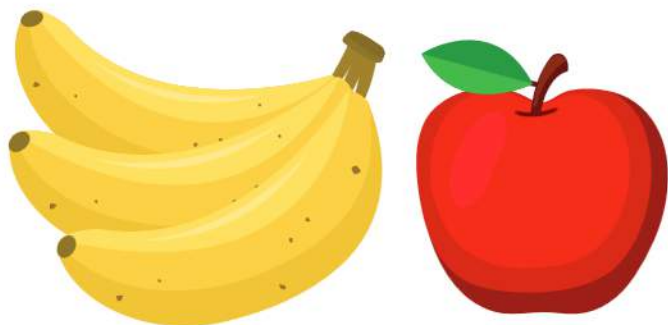
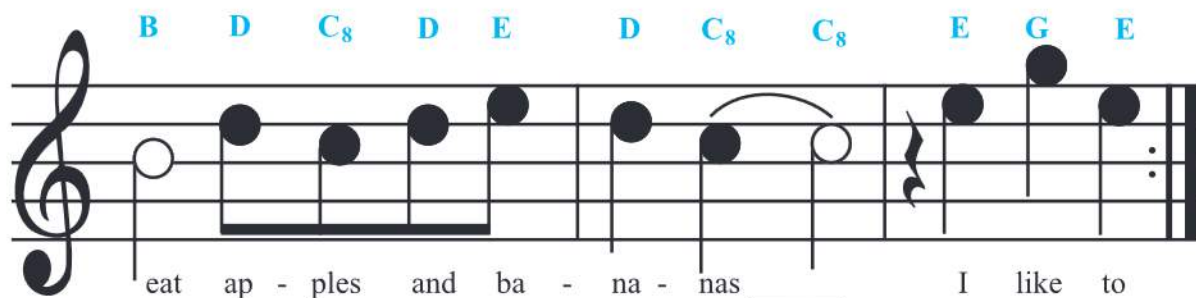
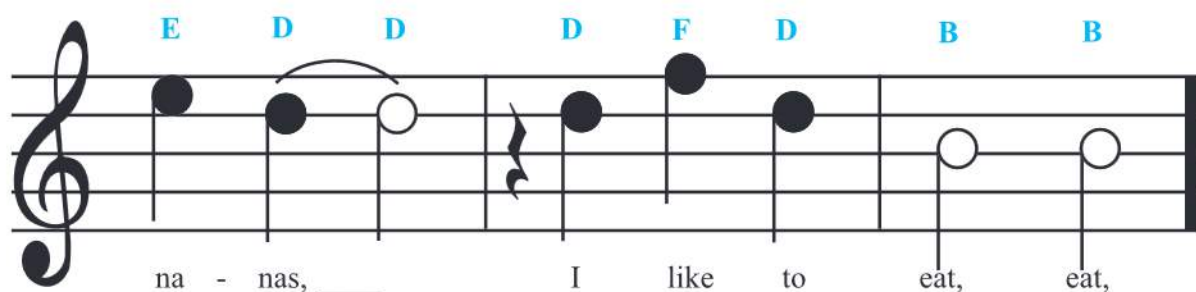
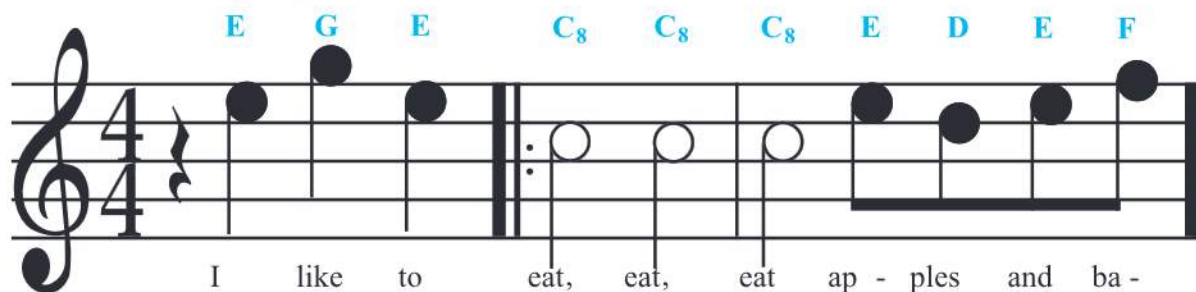
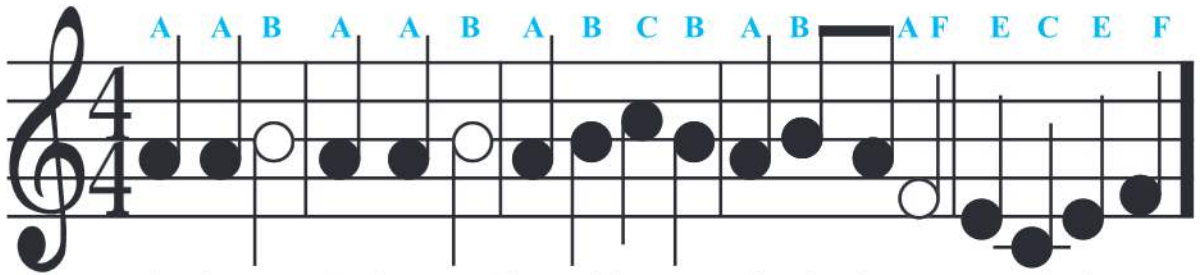


I Like to Eat Apples and Bananas

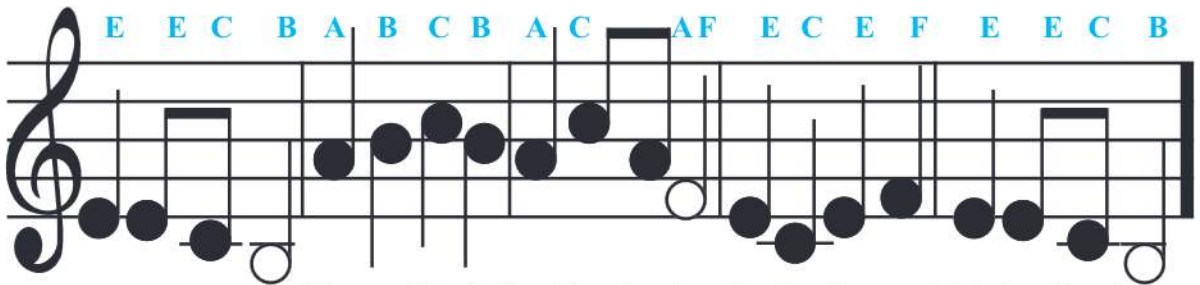


Japanese folk song

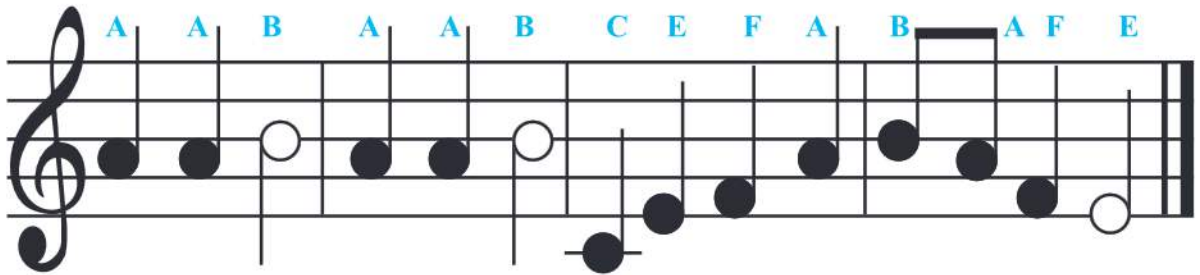
Cherry Blossom



Sa - ku - ra, Sa - ku - ra, Cher-ry blos-soms in the sky, Near and far as



eye can see. Like a mist of float-ing clouds, In the fra-grant blush of spring.



Come, oh come, come, oh come, Come and see the cher - ry trees.



Twinkle, Twinkle, Little Star

C C G G A A G F F E E
 Twin - kle, twin - kle, lit - tle star. How I won - der
 D D C G G F F E E D
 what you are. Up a - bove the world so high.
 G G F F E E D C C G G
 Like a dia - mond in the sky. Twin - kle, twin - kle
 A A G F F E E D D C
 lit - tle star. How I won - der what you are.

