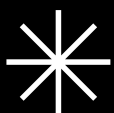
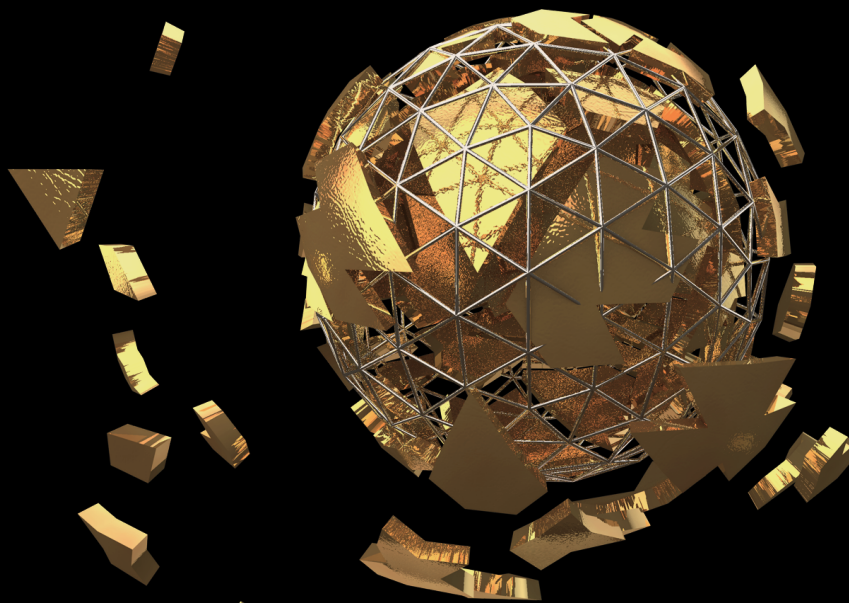


INTRODUCTION TO CHATGPT: AN OVERVIEW OF OPENAI'S CUTTING-  
EDGE LANGUAGE MODEL

CHAPTER N.1

# OpenAI & ChatGPT



AI and Robotics ... are you ready for it

# AI, ChatGPT1 ... 2 ... 3 ...

## 1. INTRODUCTION

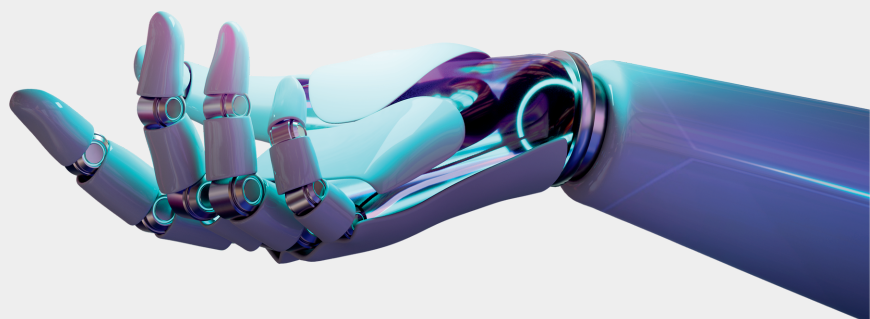
In recent years, Artificial Intelligence (AI) has emerged as one of the fastest-growing and most exciting areas of computer science and technology. Rapid progress in AI has made it evident that this technology can transform many facets of human life, from medicine and education to business and the arts. One of the most significant and well-publicized AI breakthroughs of recent years is the development of cutting-edge language models like OpenAI's ChatGPT.

## 2. WHAT IS CHATGPT?

OpenAI, a pioneer in artificial intelligence research, created ChatGPT, a language model that uses a generative pre-training technique. This model is meant to carry out numerous linguistic duties, such as text generation, question answering, and more. ChatGPT's ability to learn from massive volumes of text data and then use that information to age fresh, human-like content is one of its most distinguishing qualities.

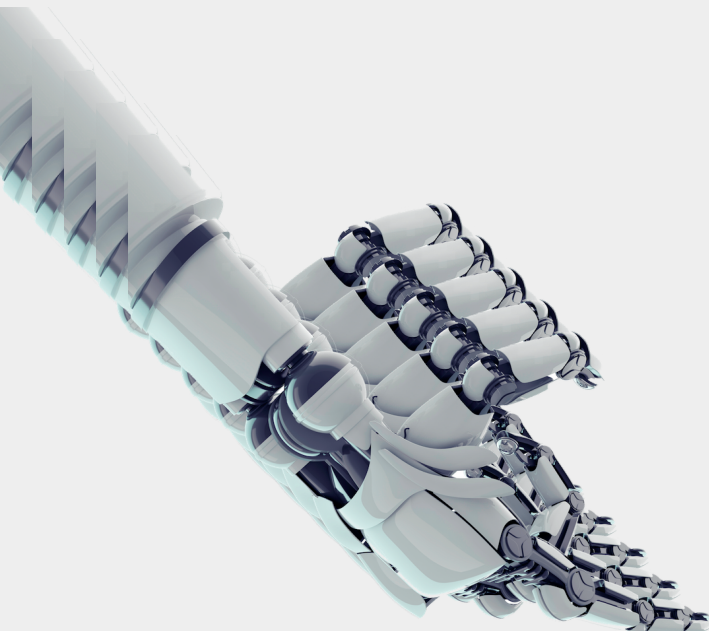
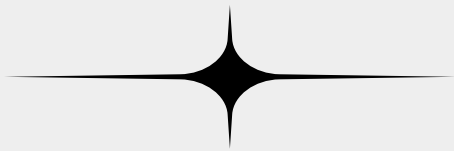
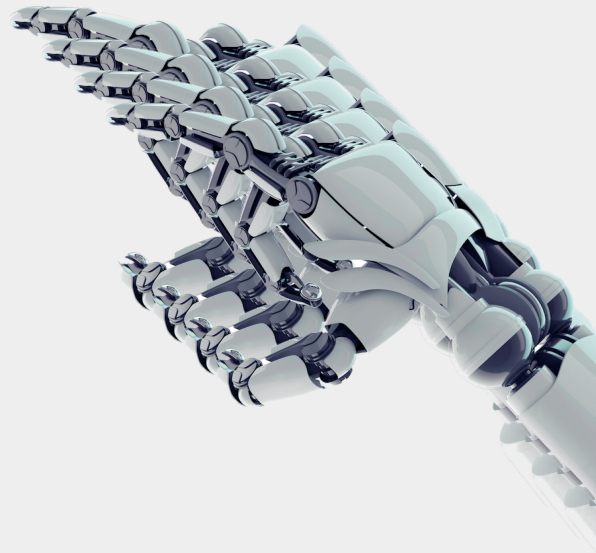
## 3. THE IMPORTANCE OF LANGUAGE MODELS

There are many factors that contribute to the significance of language models such as ChatGPT. To begin, they have the potential to assist in enhancing the precision and performance of a variety of AI-based systems. applications, such as chatbots, voice assistants, and more, that are powered by artificial intelligence. Additionally, language models can be used to evaluate and comprehend enormous amounts of text data, which can be beneficial in industries such as marketing and customer service.



# 4. Key Features of ChatGPT

Many factors contribute to the significance of language models, such as ChatGPT. They have the potential to assist in enhancing the precision and performance of a variety of AI-based systems—applications, such as chatbots, voice assistants, and more that are powered by artificial intelligence. Additionally, language models can be used to evaluate and comprehend enormous amounts of text data, which can be beneficial in industries such as marketing and customer service.



## HERE'S HOW IT WORKS

Finally, ChatGPT is a cutting-edge language model that could transform AI and language processing. Whether you're an AI researcher, a developer, or simply someone interested in AI's future, understanding the basics of ChatGPT is essential. The next chapter will delve deeper into the underlying technologies that make ChatGPT.

Possible, including transformer architecture and pre-training.