

ZTR Series: **ZTR6200 and ZTR6203**

Top-Mounted, Battery-Powered Sensor Flush Valve



ZTR6200
Water Closet



ZTR6203
Urinal

Features

- Sensor flush valve with smart sensor technology
- Solenoid activated
- Piston operated
- Adjustable sensor range
- Clog-resistant, filtered bypass piston kit
- All metal chrome-plated housing
- Dezincification-resistant brass alloy
- Chloramine-resistant internal seals
- Mechanical override button
- Battery-powered, 4 AA's, with 3-year battery life, standard
- Long-Life battery-powered, 4 AA's, with 10-year battery life
- 3-year warranty

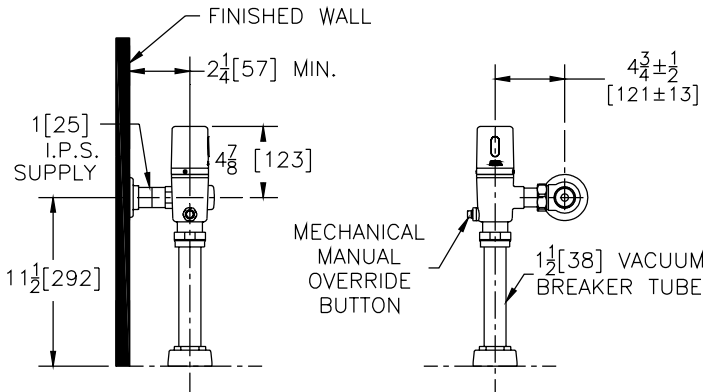
Performance

- The most reliable and dependable sensor
- ZTR's piston performance produces precise and consistent gallons per flush
- Operating pressure ranges from 25-80 psi
- When matched with Zurn fixtures, ZTR offers a flushing system with repeatable evacuation and paired performance

□ Top-Mounted, Battery-Powered Sensor Flush Valve

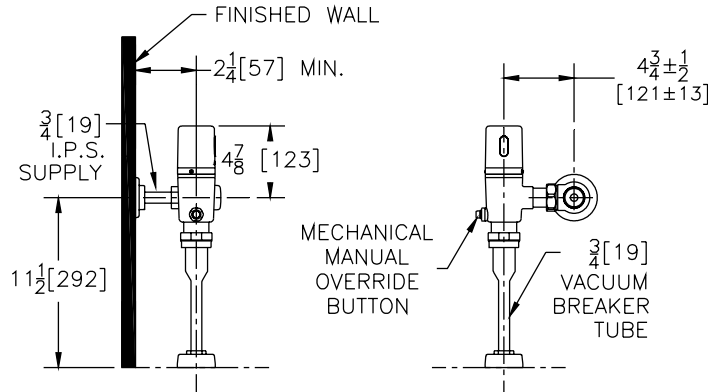
Water Closets

ZTR6200-WS1 – 1.6 GPF
ZTR6200EV – 1.28 GPF
ZTR6200-WS1-LL – 1.6 GPF
ZTR6200EV-LL – 1.28 GPF



Urinals

ZTR6203-WS1 – 1.0 GPF
ZTR6203-EWS – 0.5 GPF
ZTR6203-WS1-LL – 1.0 GPF
ZTR6203-EWS-LL – 0.5 GPF



ZTR Sensor Flush Valve Suite for water closets and urinals is performance engineered with sensor activation and piston operation technology. The ZTR is equipped with state-of-the-art chloramine resistant internal seals which reduce maintenance costs and add to the longevity of the valve. When matched with Zurn fixtures, the ZTR paired performance delivers a repeatable flushing system with unsurpassed water savings. This complete suite includes the Long-Life option with an extended 10-year battery life for advanced performance.

ZTR Options

ACCESSORIES

- LL 10-year Long-Life
- YJ Split Ring Pipe Support
- YK Solid Ring Pipe Support
- YO Bumper on Angle Stop
- Other

Engineering Specifications:

Exposed chrome-plated flushometer valve with a polished exterior.

- Filtered piston kit
- True manual override button
- Proprietary DR resistant brass alloy
- Power source
 - Sensor powered by 4 "AA" batteries
 - 3-year battery life, standard
 - 10-year battery, Long-Life -LL Option
- Control stop
 - Internal siphon-guard protection
 - Vandal-resistant stop cap
 - Sweat solder kit
 - Cast wall flange with setscrew
- High pressure vacuum breaker
- One piece hex coupling nut
- Internal seals and gaskets
 - Chloramine resistant
- Adjustable tailpiece
- Spud coupling and flange for top spud connection

NOTE: Performance guaranteed with Zurn EcoVantage® fixtures. Please consult Zurn Technical Services at 1-800-997-3876 to discuss the paired performance of this valve with other manufacturers' fixtures.



ZURN INDUSTRIES, LLC COMMERCIAL BRASS OPERATION

5900 ELWIN BUCHANAN DRIVE, SANFORD NC 27330, PHONE: 855-ONE ZURN (855-663-9876), FAX: 919-775-3541 www.zurn.com

In Canada: **ZURN INDUSTRIES LIMITED**

3544 NASHUA DRIVE, MISSISSAUGA, ONTARIO L4V 1L2, PHONE: 905-405-8272, FAX: 905-405-1292

Form No. ZMKTG240-02, Rev. 4/13