



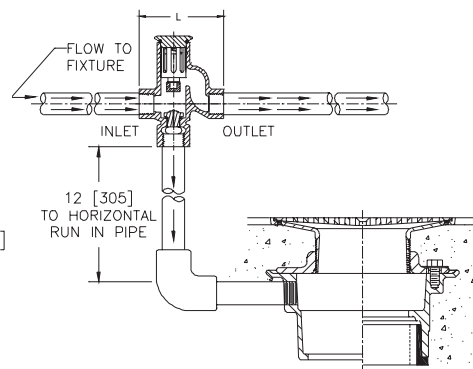
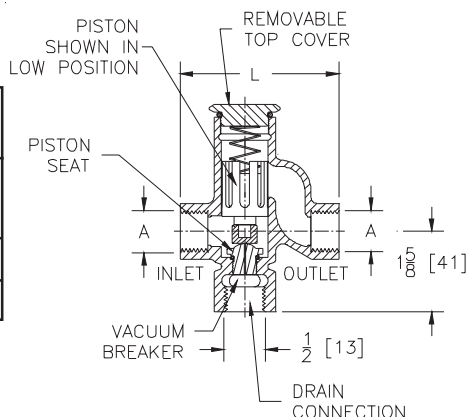
Z1022 AUTOMATIC TRAP PRIMER

The ZURN "SANI-GUARD"® automatic trap primer is a necessity in areas where drains are infrequently used and provides positive protection to maintain trap seals. The trap primer is installed in the supply line to any fixture which requires flows corresponding to the charts below.

The Zurn Z1022 automatic trap primer, properly installed in the supply line to a fixture, will automatically supply water to the deep seal "P" trap of a drain each time the fixture is used. When the fixture is used, water is delivered to the trap of the floor drain which is serviced by the trap primer. The piston inside the trap primer raises when water flows through the supply line, thus allowing water to flow into the trap.

Zurn trap primers are designed to comply with ANSI/ASSE Standard 1018.

A Pipe Size/Connection	L
1/2[13] Solder Female	3 1/4 [83]
1/2[13] IP Female	
1/2[13] Solder Female Union	5 11/16 [144]
1/2[13] IP Female Union	5 3/8 [137]



INSTALLATION

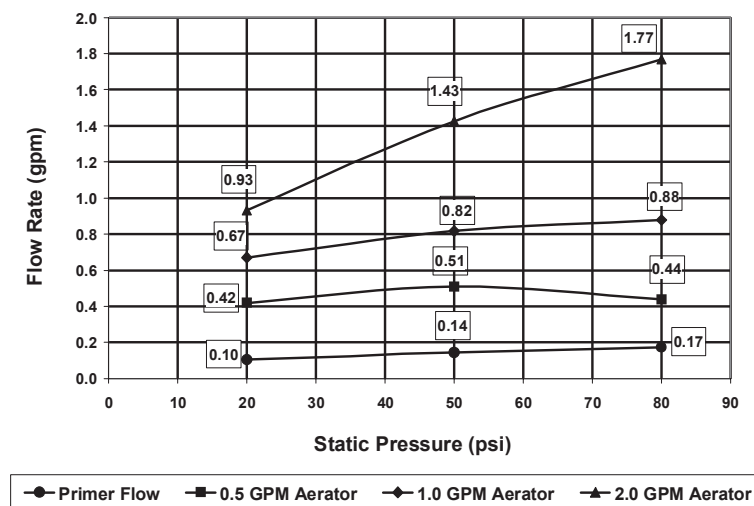
Water supply lines should be flushed clear of chips and debris, when possible, before installing the Zurn automatic trap primer.

Install in a frequently used horizontal cold water line above the trap to be protected. The trap primer valve should be installed vertically at least twelve (12) inches above the grid of a floor drain, or the flood rim of the equipment which the trap is to serve.

Note: Remove the piston during the soldering process. Replace the piston once the soldering is completed.

After the unit is installed, check through the vacuum breaker ports to see that water flows to the drain trap when the cold water line is flowing, and that the valve shuts off when the water line is closed.

Flow Rate through a 0.5 to 2.0 GPM Faucet Aerator



NOTE:

In order to operate the trap primer at static pressures between 20 and 80 psi, a pressure drop of 2 to 3 psi is required.

MAINTENANCE

The Zurn Z1022 trap primer requires little maintenance. A periodic visual inspection through the air gap vacuum ports of the Z1022 or drain trap will insure proper operation.

Form # T1 Date: 8/4/03

C.N. No. 91148

Rev. F

ZURN INDUSTRIES, INC. ♦ SPECIFICATION DRAINAGE OPERATION ♦ 1801 Pittsburgh Ave. ♦ Erie, PA 16514

Phone: 814/455-0921 ♦ Fax: 814/454-7929 ♦ World Wide Web: www.zurn.com

In Canada: ZURN INDUSTRIES LIMITED ♦ 3544 Nashua Drive ♦ Mississauga, Ontario L4V1L2 ♦ Phone: 905/405-8272 Fax: 905/405-1292