



# Model 75

## Sump Pump

### Features:

- Energy saving product
- 2-year warranty
- Reliable integrated vertical switch
- 1/2 HP 115 V sump pump
- Performance up to 25' (7.6 m) TDH
- Flows up to 50 GPM (189 LPM)
- Rugged cast iron motor housing
- Engineered plastic base
- Corrosion-resistant, powder coated epoxy paint

**100% factory tested**



**ZOELLER**®  
PUMP COMPANY

Trusted. Tested. Tough.®

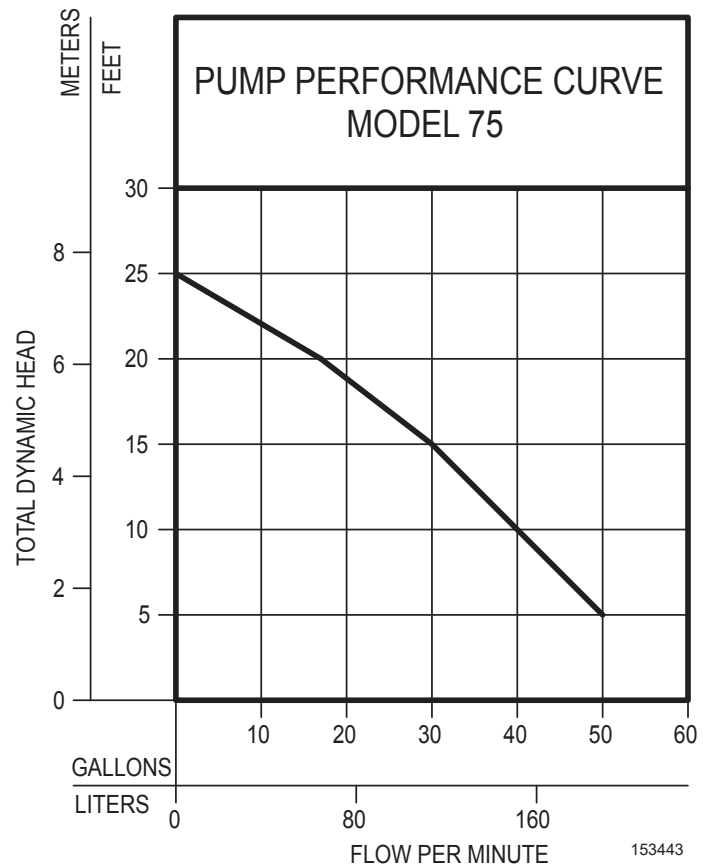
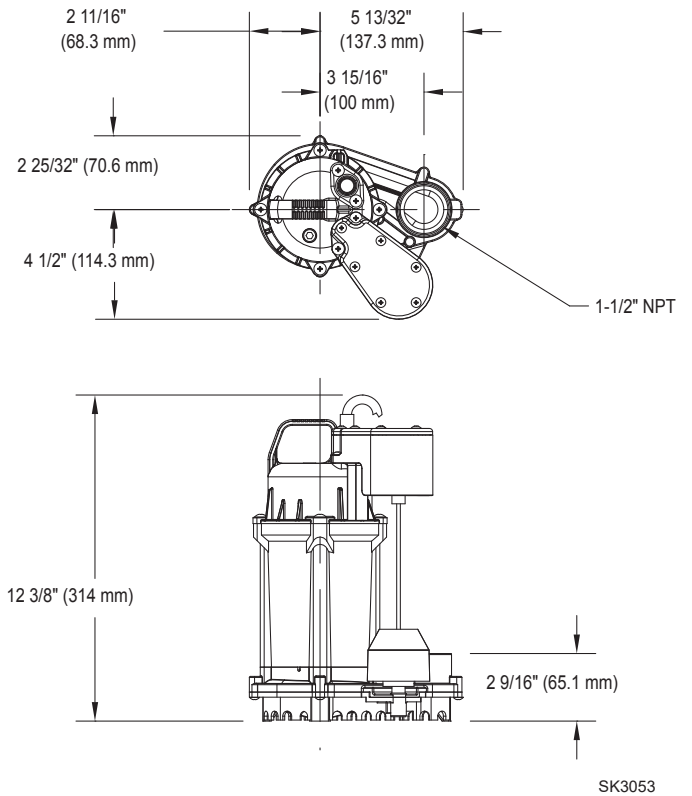
zoellerpumps.com 800-928-7867  
3649 Cane Run Road, Louisville, KY 40211 USA

FM2961  
0720  
Supersedes  
0420

## PRODUCT SPECIFICATIONS

<b>MOTOR</b>	Horse Power	1/2
	Voltage	115
	Phase	1 Ph
	Hertz	60 Hz
	RPM	3450
	Type	Permanent split capacitor
	Insulation	Class B
	Amps	5.6
<b>PUMP</b>	Operation	Automatic
	Auto On/Off Points	8-1/4" (21 cm) / 2-1/2" (7 cm)
	Discharge Size	1-1/2" NPT
	Solids Handling	3/8" (9 mm) spherical solids
	Cord Length	10' (3 m) standard
	Cord Type	UL listed, 3-wire, grounded plug
	Max. Head	25' (7.6-m)
	Max. Flow Rate	50 GPM (189 LPM)
	Max. Operating Temp.	104 °F (40 °C)
	Cooling	Oil filled
	Motor Protection	Auto reset thermal overload
	<b>MATERIALS</b>	Motor Housing
Pump Housing		Engineered plastic
Base		Engineered plastic
Upper Bearing		Ball bearing
Lower Bearing		Ball bearing
Mechanical Seals		Carbon and ceramic
Impeller Type		Non-clogging vortex
Impeller		Engineered plastic
Hardware		Stainless steel
Motor Shaft		SUS420J2 stainless steel
Gasket		NBR

NOTE: See model comparison chart for specific details.



**CAUTION**

All installation of controls, protection devices and wiring should be done by a qualified licensed electrician. All electrical and safety codes should be followed including the most recent National Electrical Code (NEC) and the Occupational Safety and Health Act (OSHA).