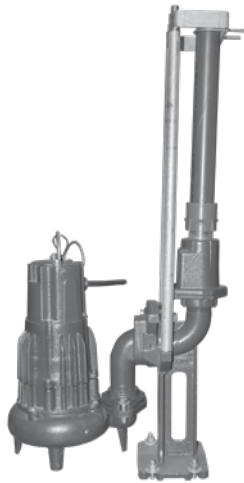


Product information presented here reflects conditions at time of publication. Consult factory regarding discrepancies or inconsistencies.



**MAIL TO:** P.O. BOX 16347 • Louisville, KY 40256-0347  
**SHIP TO:** 3649 Cane Run Road • Louisville, KY 40211-1961  
 (502) 778-2731 • 1 (800) 928-PUMP • **FAX** (502) 774-3624

**Visit our web site:**  
**zoellerengineered.com**



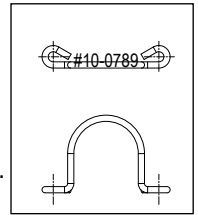
Z-Rail® Disconnect System shown

## Z-RAIL® DISCONNECT SYSTEMS

### THREADED DISCHARGE PUMPS 1-1/4" THRU 3" NPT

#### FEATURES

- Sewage, storm water and effluent pump systems
- For concrete, steel, or fiberglass tanks
- Allows for removal of pumps from ground level
- Coupling base with positive machine fit and o-ring seal provides a reliable seal.
- Guide rails direct the pump to and from the base discharge elbow. Systems are supplied complete with coupling base, sealing plate, pump discharge elbow, and upper rail support bracket.
- All systems use 3/4" schedule 40 pipe rails (not included).
- Refer to Z-Rail® installation instructions ZM2821.



SK2486

#10-0789 lifting bails are required on 6160, 6180, 6280, 6290, 7008/7009/7010, and 7020/7021 models to balance pump and rail plate evenly. Other models already include proper lifting device.

SPECIFICATIONS					
Rail System	Pump Discharge	Rail System Discharge	Materials of Construction*	Weight	Type
39-0134	1-1/4" V	2" V	Powder coated, ductile iron	41	Z-Rail®
39-0135	1-1/4" V	2" V	Powder coated, ductile iron w/ SS upper rail support bracket	43	Z-Rail®
39-0136	1-1/4" V	2" V	Powder coated, ductile iron / brass for non-sparking	44	Z-Rail®
39-0143	1-1/4" V	2" V	Powder coated, ductile iron w/ SS upper rail support / brass for non-sparking	43	Z-Rail®
39-0137	1-1/4" H	1-1/4" V	Powder coated, ductile iron (models 7020, 7021 only)	41	Z-Rail®
39-0138	1-1/4" H	1-1/4" V	Powder coated, ductile iron w/ SS upper rail support bracket (models 7020, 7021 only)	43	Z-Rail®
39-0131	1-1/2" V	2" V	Powder coated, ductile iron	41	Z-Rail®
39-0132	1-1/2" V	2" V	Powder coated, ductile iron w/ SS upper rail support bracket	43	Z-Rail®
39-0133	1-1/2" V	2" V	Powder coated, ductile iron / brass for non-sparking	44	Z-Rail®
39-0142	1-1/2" V	2" V	Powder coated, ductile iron w/ SS upper rail support / brass for non-sparking	43	Z-Rail®
39-0128	2" V	2" V	Powder coated, ductile iron	42	Z-Rail®
39-0129	2" V	2" V	Powder coated, ductile iron w/ SS upper rail support bracket	43	Z-Rail®
39-0130	2" V	2" V	Powder coated, ductile iron / brass for non-sparking	45	Z-Rail®
39-0141	2" V	2" V	Powder coated, ductile iron w/ SS upper rail support / brass for non-sparking	44	Z-Rail®
39-0146	2" V	2" V	71 Series Grinder - Powder coated, ductile iron	43	Z-Rail®
39-0148	2" V	2" V	71 Series Grinder - Powder coated, ductile iron w/ SS upper rail support bracket	45	Z-Rail®
39-0147	2" V	2" V	71 Series Grinder - Powder coated, ductile iron / brass for non-sparking	43	Z-Rail®
39-0149	2" V	2" V	71 Series Grinder - Powder coated, D.I. w/ SS upper rail support / brass for non-sparking	44	Z-Rail®
39-0122	3" V	3" V	Powder coated, ductile iron	47	Z-Rail®
39-0123	3" V	3" V	Powder coated, ductile iron w/ SS upper rail support bracket	47	Z-Rail®
39-0124	3" V	3" V	Powder coated, ductile iron / brass for non-sparking	47	Z-Rail®
39-0125	3" V	3" V	Powder coated, ductile iron w/ SS upper rail support / brass for non-sparking	47	Z-Rail®
ACCESSORIES - Intermediate rail brackets are required for each 12' of basin depth					
39-0139	Intermediate rail bracket 1-1/4", 1-1/2" and 2" discharge - stainless steel			4	Z-Rail®
39-0140	Intermediate stabilizer, SS, for 3" system			4	Z-Rail®
10-0789**	SS lifting bail for 6160, 6180, 6280, 6290, 7008/7009/7010 and 7020/7021 series (Pictured above)			1	Both

\* Coupling base / sealing plate / upper support / bracket and rail guide.

\*\* Lifting bails are required on the following models to balance pump and rail plate evenly. Other models already include proper lifting device.

# SQUARE GUIDE RAIL SYSTEMS (1-1/4", 1-1/2" & 2" Discharge) FIELD ASSEMBLED

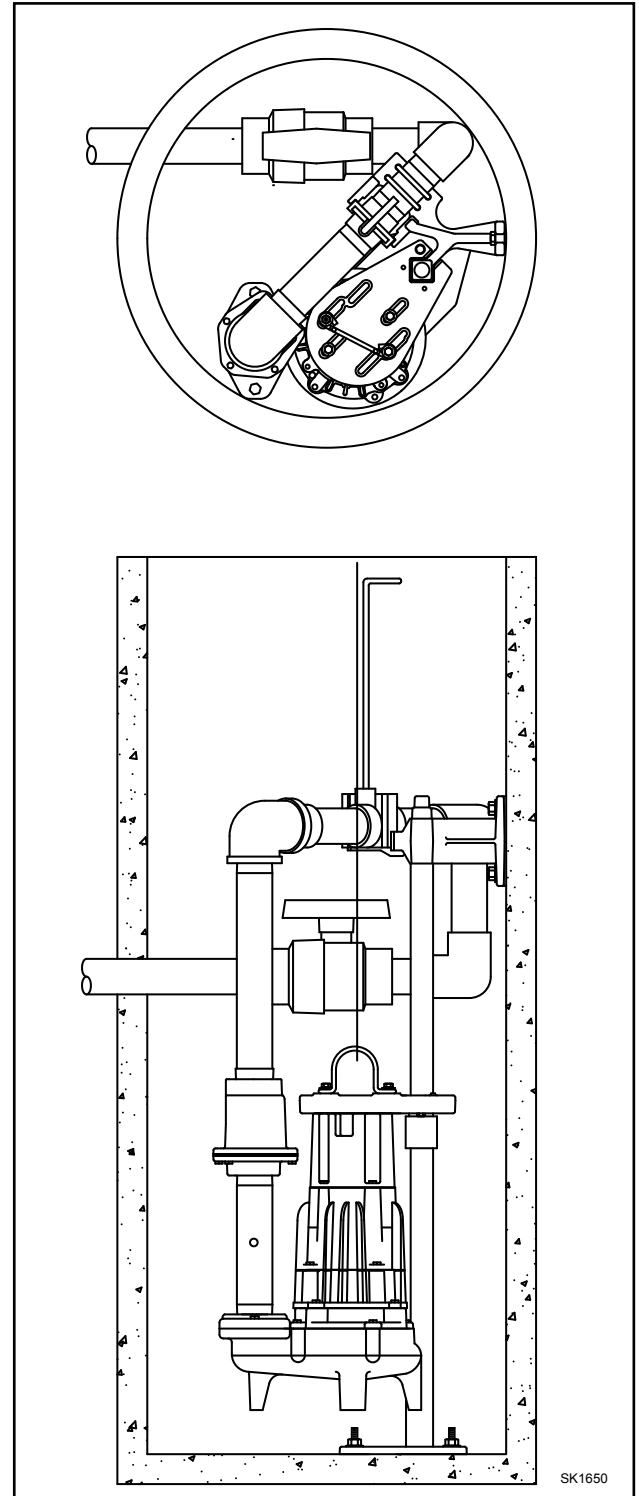
- Economical: reduces time & cost of removing pump.
- Safety: keeps personnel out of pits & out of contact with contaminants.
- Inspections made fast & easy.

## FEATURES

- Single, rigid, stainless steel square rail design
- Stainless steel rail, nuts, bolts, fasteners and lifting bail
- Cast iron angle arm bracket and pump guide bracket
- Galvanized piping or stainless steel - optional
- Red brass disconnect fittings with Teflon®-coated Buna O-ring seal
- PVC ball valve
- Cast iron check valve
- Optional stainless steel pull rods and lifting cable available
- Also available in prepackaged fiberglass basins

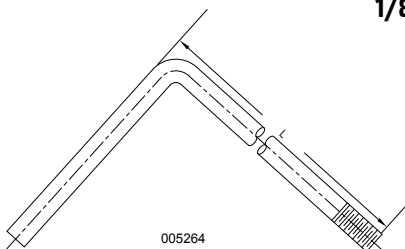
\* For tanks deeper than 72" a second angle arm bracket P/N 39-0070 is required. Sch. 40 galvanized or stainless steel pipe is used for extending the rail length.

Rail System	*Tank Depth	Discharge Pipe Size	Pump Series
39-0054	48"	1-1/4"	7011 grinders
39-0055	60"	1-1/4"	7011 grinders
39-0056	72"	1-1/4"	7011 grinders
39-0057	48"	1-1/4"	7010 grinders
39-0058	60"	1-1/4"	7010 grinders
39-0059	72"	1-1/4"	7010 grinders
39-0060	48"	1-1/2"	6160-6180 effluent pumps
39-0061	60"	1-1/2"	6160-6180 effluent pumps
39-0062	72"	1-1/2"	6160-6180 effluent pumps
39-0063	48"	2"	6160-6180-6290 effluent & sewage pumps
39-0064	60"	2"	6160-6180-6290 effluent & sewage pumps
39-0065	75"	2"	6160-6180-6290 effluent & sewage pumps
39-0066	48"	2"	6280 sewage pumps
39-0067	60"	2"	6280 sewage pumps
39-0068	72"	2"	6280 sewage pumps



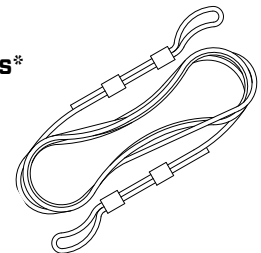
## Stainless Steel Pull Rods

3/8"-16 UNC	
Part Number	Length
39-0069	1'
39-0006	2-1/2'
39-0007	3-1/2'
39-0008	4-1/2'
39-0009	5-1/2'



## 1/8" Stainless Steel Lifting Cables\*

Part Number	Length
39-0031	8'
39-0032	12'
39-0033	16'
39-0034	20'
39-0035	24'

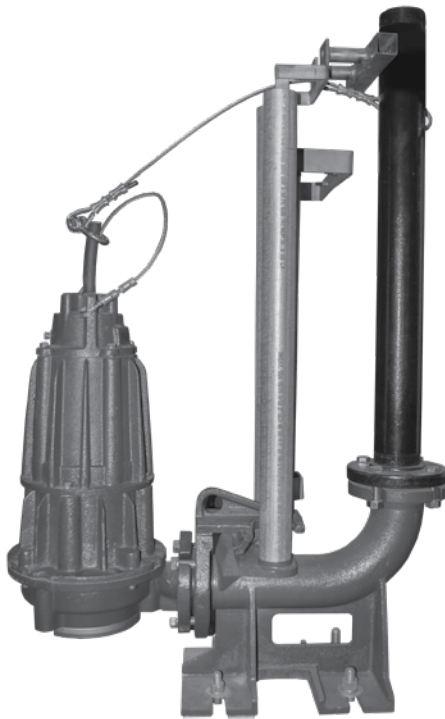


\* Cable recommended for commercial duty pumps and 2HP Grinder Pumps.

SKA1335

# FLANGED RAIL SYSTEMS (2-1/2" TO 6" Discharge) FIELD ASSEMBLED

Guide rail system for removal and installation of flanged, horizontal discharge pumps without getting in or removing fluid from pit.



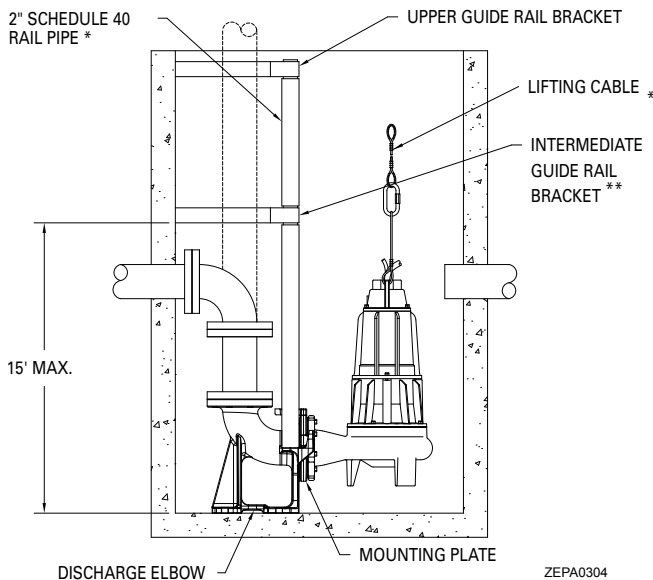
**2-1/2" & 3" Horizontal Flanged**



**4" System**



**6" System**



ZEPA0304

\* 1/4" lifting cable not included. See ZM1328 for correct cable.

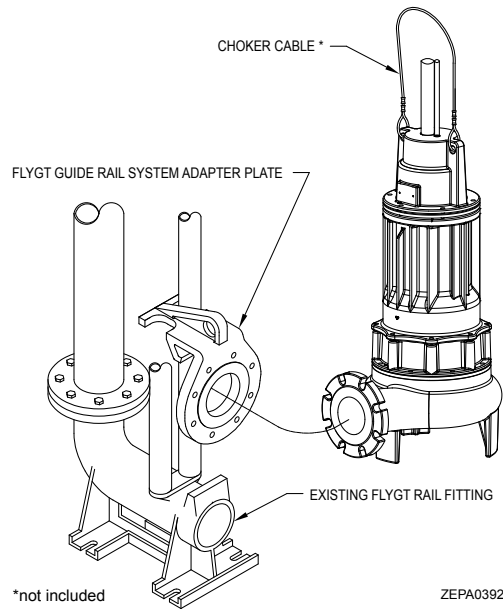
\*\*One intermediate guide rail bracket is required for every 20 ft. for 3" system or 15 ft. for 4" or 6" system, of basin depth. See chart for part number.

## SPECIFICATIONS

Part Number	Description	Pump Discharge	Rail System Discharge	Guide Rails*
39-0094	2-1/2" / 3" guide rail system SS	2-1/2" or 3" horizontal flange	3" Flange	2" SS or galv.
39-0154	4" guide rail system SS flange	4" horizontal	4" Flange	2" SS or galv.
6039-0072	6" guide rail system SS flange	6" horizontal	6" Flange	2" SS or galv.
39-0095	2-1/2" / 3" guide rail system SS non-sparking for Class I Group C and/or Group D Division 1 installation	2-1/2" or 3" horizontal flange	3" Flange	2" SS or galv.
39-0155	4" guide rail system SS non-sparking for Class I Group C and/or Group D Division 1 installation	4" horizontal flange	4" Flange	2" SS or galv.
6039-0073	6" guide rail system SS non-sparking for Class I Group C and/or Group D Division 1 installation	6" horizontal flange	6" Flange	2" SS or galv.
39-0096	Intermediate bracket for 2-1/2" / 3" rail systems			
6039-0014	Intermediate bracket for 4" rail systems			
6039-0021	Intermediate bracket for 6" rail systems			

## 3", 4" & 6" FLYGT GUIDE RAIL SYSTEM ADAPTERS

Adapter plates for retrofitting 3", 4" & 6" horizontal discharge pumps to existing Flygt rail systems.



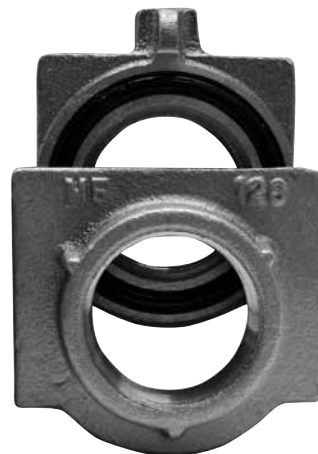
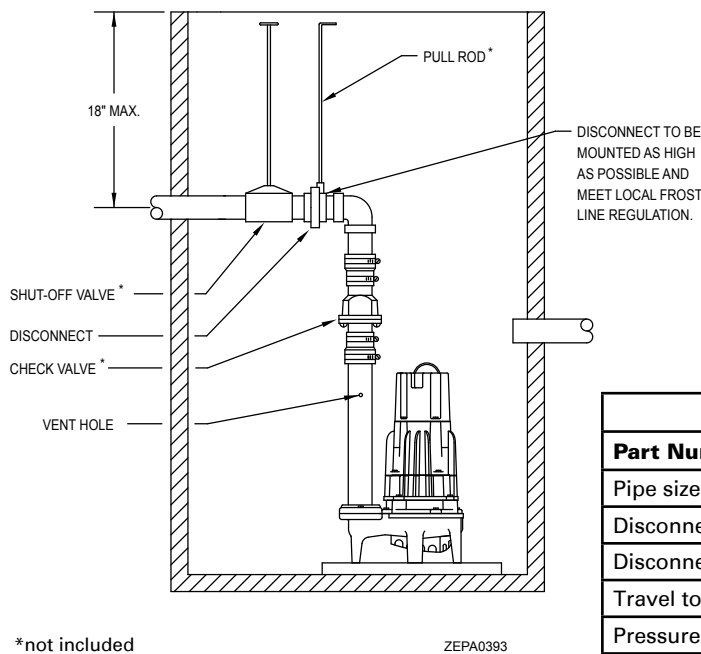
### DESIGN FEATURES

- Cast iron construction
- Flange conforms to ANSI B16.10 fully flat/MSS SP-6.
- For use with all 6400, 61 HD and 62 HD series pumps with 3", 4" or 6" discharges and 2" NPT rail pipe.
- Flange gasket and stainless steel bolts included.

Pump Discharge	Part Number
3"	6039-0070
4"	6039-0048
6"	6039-0053

## DISCONNECT ONLY (1-1/4", 1-1/2" & 2" Discharge)

Disconnect fitting; used for shallow systems where guide rails are not necessary. (pull rod not included)



39-0053, 1-1/4" NPT  
39-0001, 1-1/2" NPT  
39-0002, 2" NPT

SPECIFICATIONS			
Part Number	39-0053	39-0001	39-0002
Pipe size	1-1/4"	1-1/2" NPT	2" NPT
Disconnect material	brass	brass	brass
Disconnect weight	1.6 lb.	2.0 lbs.	2.5 lbs.
Travel to disengage	3-3/4"	3"	3-1/2"
Pressure rating	150 PSI	150 PSI	150 PSI
Pull rods thread size	3/8" - 16 UNC	3/8" - 16 UNC	3/8" - 16 UNC

NOTE: All pumps should be supported underneath with concrete blocks or basin floor.