

Product information presented here reflects conditions at time of publication. Consult factory regarding discrepancies or inconsistencies.



MAIL TO: P.O. BOX 16347 • Louisville, KY 40256-0347  
SHIP TO: 3649 Cane Run Road • Louisville, KY 40211-1961  
TEL: (502) 778-2731 • 1 (800) 928-PUMP • FAX: (502) 774-3624

Visit our website:  
zoellerpumps.com

## REPLACEMENT PARTS LIST FOR MODELS:

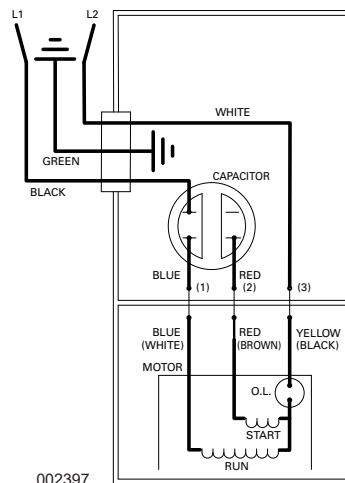
SCREW IN STATOR MOTOR DESIGN  
FOR GLUE IN STATOR MOTOR DESIGN  
(SEE PAGE 5)

**N270 NONAUTOMATIC 115V**  
**E270 NONAUTOMATIC 230V**  
**N4270 NONAUTOMATIC 115V**  
**E4270 NONAUTOMATIC 230V**

### TO ORDER REPLACEMENT PARTS

PLEASE FURNISH THE FOLLOWING INFORMATION:

- Model number
- Part number of pump
- Part number and description of part



WIRING DIAGRAM FOR MODELS  
"N270-F, E270-F, N4270-F, E4270-F"  
1/20 thru Current

**REPLACEMENT PARTS LIST FOR SINGLE SEAL MODELS "N270" AND "E270"**

See page 4 for illustration.

REF NO.	QTY	Kit	DESCRIPTION	NOTES	N270-F 01/20 thru CURRENT.	E270-F 01/20 thru CURRENT.
1	1		HANDLE		267032	267032
2	1		CASE ASSEMBLY		267051	267051
3	1	*	CASE GASKET		267007	267007
4	1		POWER CORD - 115V	3	011551	N/A
			POWER CORD - 230V		N/A	003618
5	1	*	CORD SEAL ASSEMBLY		156778	156778
6	1		MOTOR HOUSING ASSEMBLY		156811	156811
7	1		STATOR ASSEMBLY - 115V	3	156808	N/A
			STATOR ASSEMBLY - 230V		N/A	156812
8	1		ROTOR & BEARING ASSEMBLY		156777	156777
9	1	*	ROTOR BEARING		009540	009540
10	1	*	21.5 Oz OIL CAN		010330	010330
11	1	*	SHAFT SEAL ASSEMBLY		011681	011681
12	1	*	MOTOR HOUSING SEAL		034007	034007
13	1		BASE		010973	010973
14	2		HANDLE RETAINERS		267053	267053
15	1	*	WIRE PACK		011548	011548
16	1		CAPACITOR ASSEMBLY		156807	156807
17	1		PUMP HOUSING		155321	155321
18	1		IMPELLER		011690	011690
19	2	*	TEST PLUG		034090	034090
20	4	*	SCREW - CASE (1/4-20X3/4)		001916	001916
21	2	*	SCREW - RETAINER (10-24 X3/8)		001883	001883
22	2	*	SCREW - GROUND & CAPACITOR (6-32X1/4)		001877	001877
23	3	*	THRU WALL TERMINAL		003402	003402
24	1		BASE O-RING SEAL		005701	005701
25	10		SCREW - BASE (10-10X1)		005326	005326
26	4	*	SCREW - MOTOR HOUSING (1/4-20X7/8)		012491	012491
27	2	*	SCREW - STATOR (8-32 X 4-9/32)		155319	155319
<input type="checkbox"/>	1		REBUILD KIT		156775	156775

\* Items included in rebuild kit.       Not shown in illustration.

**Service parts notes:**

- 1) If an "X" follows model no., or date mfg. on brass ID tag, consult factory for ordering any parts.
- 2) See FM0160 Parts Price Sheet for listing of parts prices.
- 3) "N/A" indicates not applicable.

# REPLACEMENT PARTS LIST FOR DOUBLE SEAL MODELS "N4270" AND "E4270"

See page 4 for illustration.

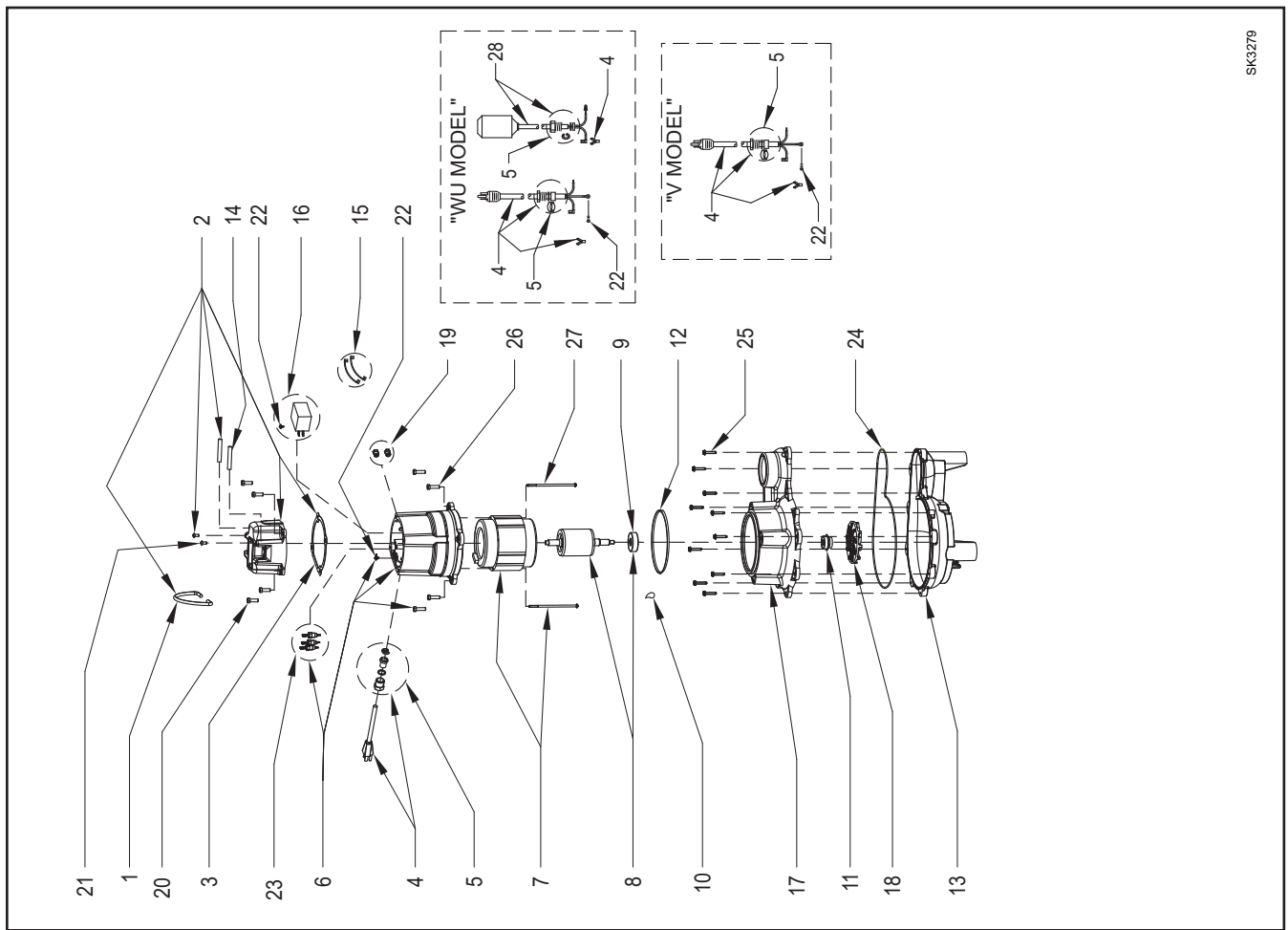
REF NO.	QTY	Kit	DESCRIPTION	NOTES	N4270-F 01/20 thru CURRENT.	E4270-F 01/20 thru CURRENT.
1	1		HANDLE		267032	267032
2	1		CASE ASSEMBLY		267051	267051
3	1	*	CASE GASKET		267007	267007
4	1		POWER CORD - 115V	3	011551	N/A
			POWER CORD - 230V		N/A	003618
5	1	*	CORD SEAL ASSEMBLY		156778	156778
6	1		MOTOR HOUSING ASSEMBLY		156811	156811
7	1		STATOR ASSEMBLY - 115V	3	156808	N/A
			STATOR ASSEMBLY - 230V		N/A	156812
8	1		ROTOR & BEARING ASSEMBLY		156814	156814
9	1	*	ROTOR BEARING		009540	009540
10	1	*	28 Oz OIL CAN		010331	010331
11	1	*	12 Oz OIL CAN		010158	010158
12	2	*	SHAFT SEAL ASSEMBLY		011681	011681
13	2	*	MOTOR HOUSING & ADAPTER SEAL		034007	034007
14	1		BASE		008646	008646
15	2		HANDLE RETAINERS		267053	267053
16	1	*	WIRE PACK		011548	011548
17	1		CAPACITOR ASSEMBLY		156807	156807
18	1		ADAPTER		156813	156813
19	1		PUMP HOUSING		155742	155742
20	1		IMPELLER		011690	011690
21	3	*	TEST PLUG		034090	034090
22	9	*	SCREW - CASE & BASE (1/4-20X3/4)		001916	001916
23	3	*	SCREW - RETAINER & BASE (10-24 X3/8)		001883	001883
24	2	*	SCREW - GROUND & CAPACITOR (6-32X1/4)		001877	001877
25	5	*	THRU WALL TERMINAL		003402	003402
26	1	*	SNAP RING & WASHER		010167	010167
27	8	*	SCREW - MOTOR HOUSING & ADAPTER (1/4-20X7/8)		012491	012491
28	2	*	SCREW - STATOR (8-32 X 4-9/32)		155319	155319
☐	1		REBUILD KIT		156776	156776

\* Items included in rebuild kit. ☐ Not shown in illustration.

## Service parts notes:

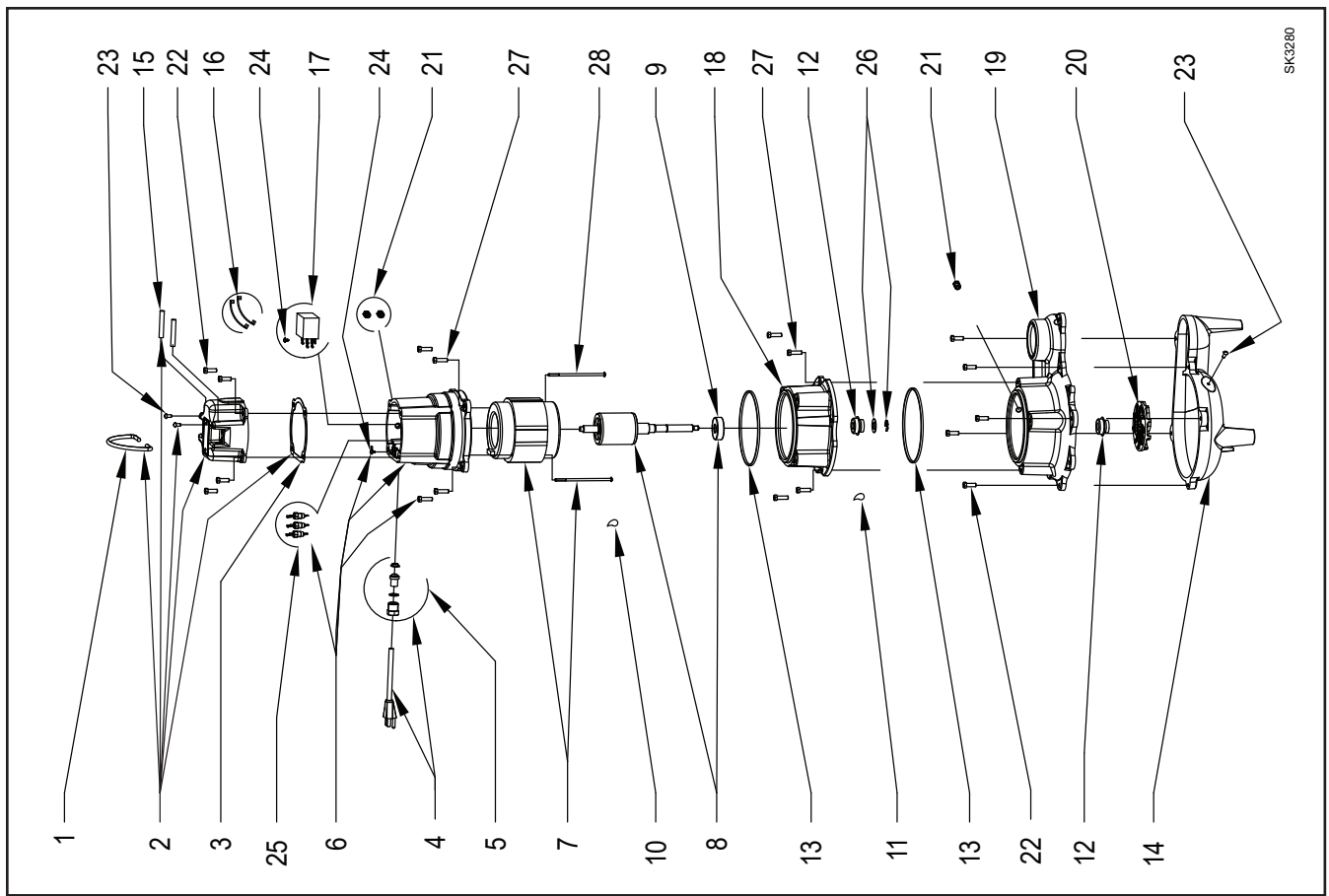
- 1) If an "X" follows model no., or date mfg. on brass ID tag, consult factory for ordering any parts.
- 2) See FM0160 Parts Price Sheet for listing of parts prices.
- 3) "N/A" indicates not applicable.

REPLACEMENT PARTS ILLUSTRATION FOR MODELS "N270" AND "E270"



SK3279

REPLACEMENT PARTS ILLUSTRATION FOR MODELS "N4270" AND "E4270"



SK3280

# REPLACEMENT PARTS LIST FOR MODELS:

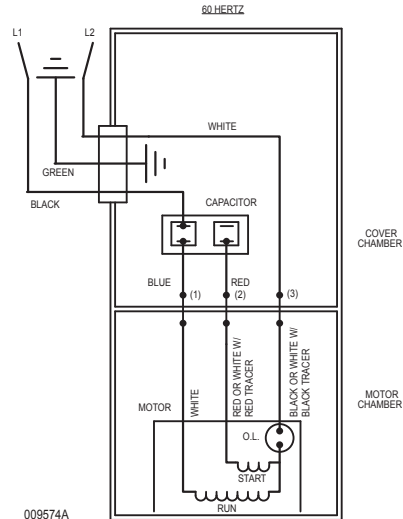
**N270 NONAUTOMATIC 115V**  
**E270 NONAUTOMATIC 230V**  
**N4270 NONAUTOMATIC 115V**  
**E4270 NONAUTOMATIC 230V**

Consult factory for all other models

## ***TO ORDER REPLACEMENT PARTS***

**PLEASE FURNISH THE FOLLOWING INFORMATION:**

- Model number
- Part number of pump
- Part number and description of part

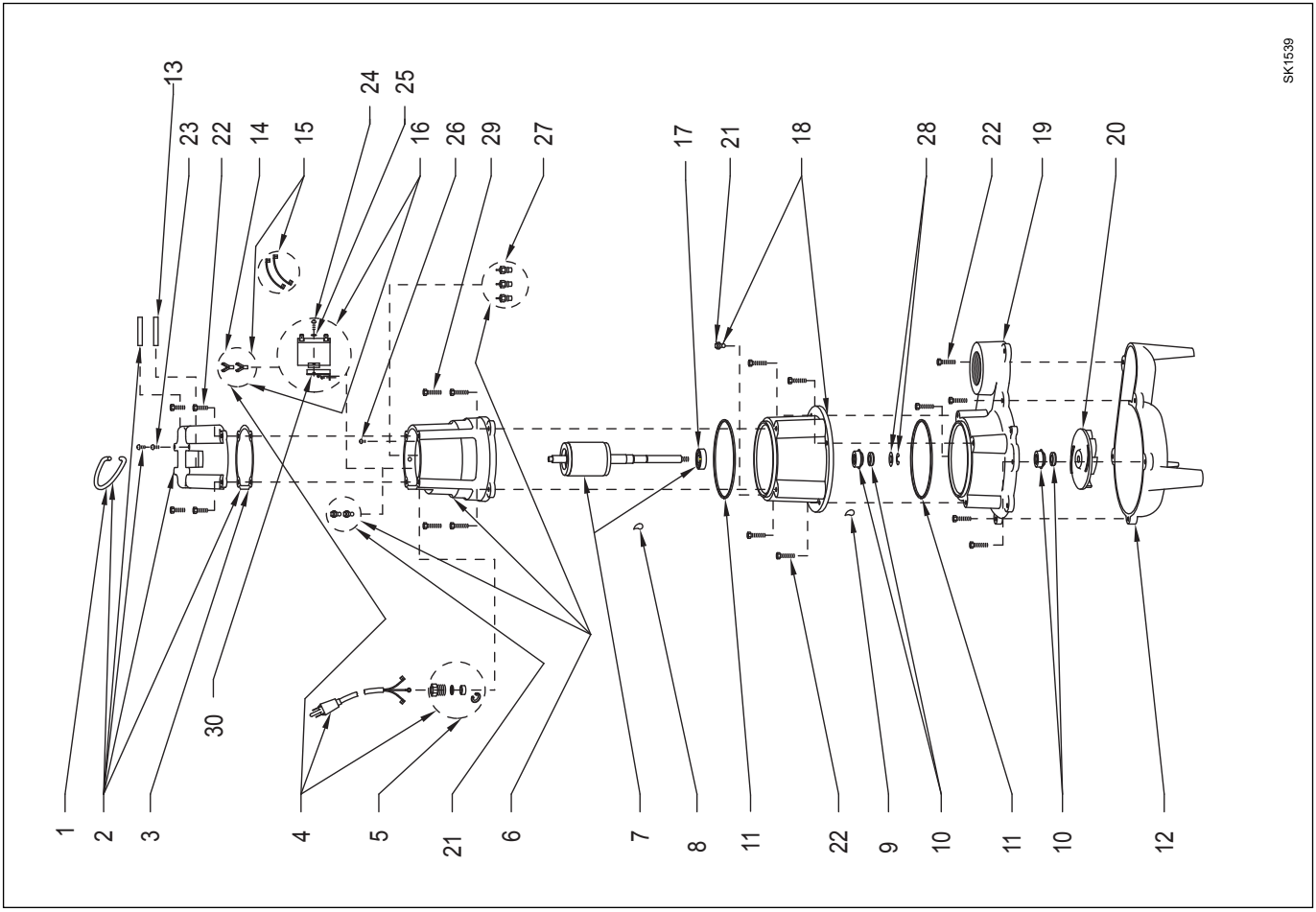


WIRING DIAGRAM FOR MODELS  
"N270-F, E270-F, N4270-F, E4270-F"  
6/95 thru 12/19



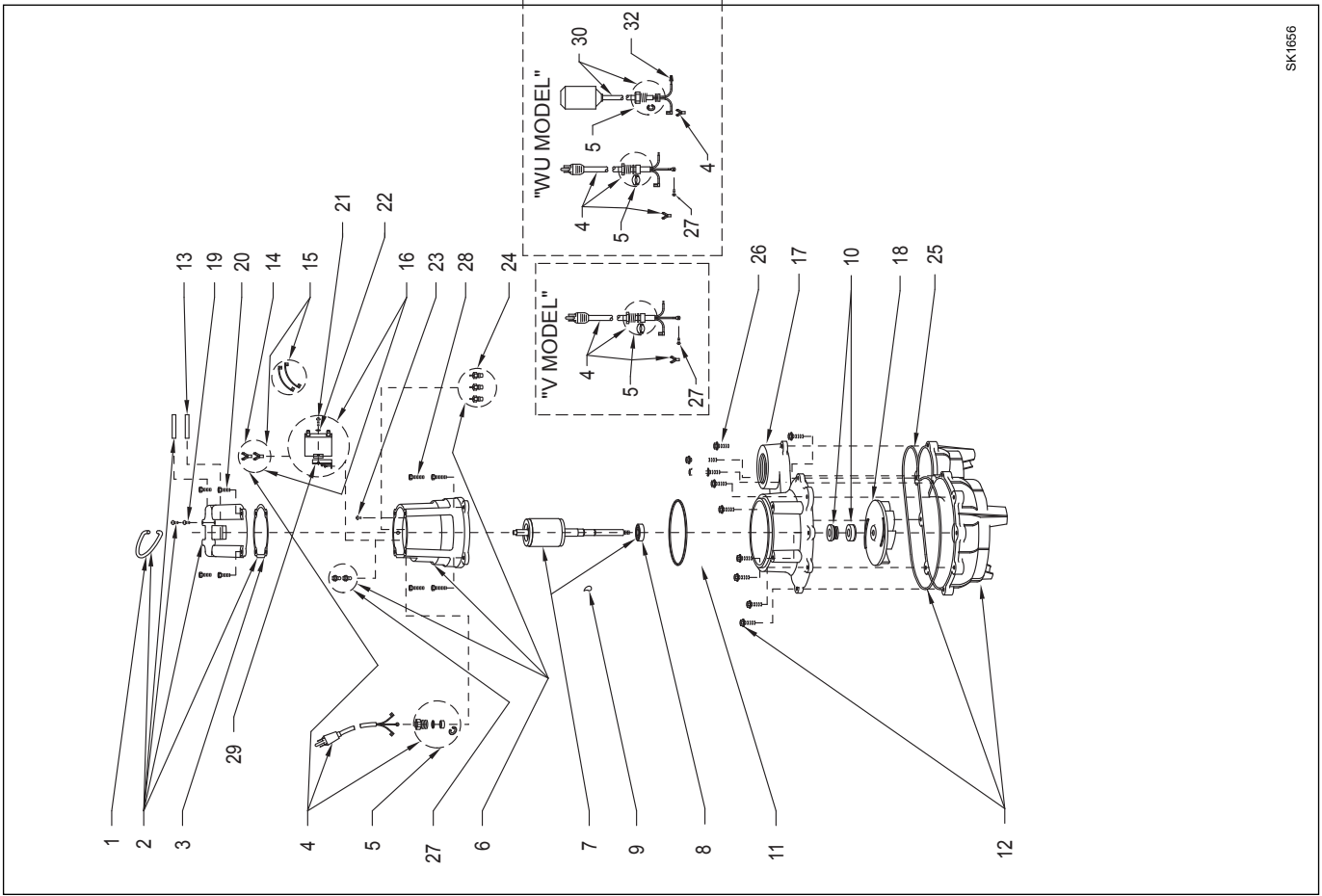


REPLACEMENT PARTS ILLUSTRATION FOR MODELS "N4270" AND "E4270"



SK1539

REPLACEMENT PARTS ILLUSTRATION FOR MODELS "N270" AND "E270"



SK1656