

## 8004 A Zyklop Metal Ratchet with switch lever and 1/4" drive, 1/4" x 141 mm

### The Zyklop Metal Ratchet Switch, 1/4"



<b>EAN:</b>	4013288174024	<b>Size:</b>	214x50x25 mm
<b>Part number:</b>	05004004001	<b>Weight:</b>	120 g
<b>Article number:</b>	8004 A	<b>Country of origin:</b>	CZ
		<b>Customs tariff number:</b>	82041100

- Convenient direction change thanks to switchover lever
- Extremely slim ratchet with long lever
- Return angle of only 5°
- Secure socket locking
- For 1/4" square sockets with ball lock

Zyklop Metal ratchet with switchover lever. Slim design for work in even very confined spaces. The 72 fine-pitched teeth allow a small return angle of 5°. Comes with a switchover lever for convenient direction change and secure socket locking function. Forged, full metal ratchet (chrome-molybdenum steel) for particularly high robustness and long service life.



#### Web link

[https://products.wera.de/en/zyklop\\_ratchets\\_and\\_accessories\\_the\\_zyklop\\_ratchets\\_the\\_zyklop\\_ratchets\\_1\\_4\\_the\\_zyklop\\_metal\\_ratchet\\_switch\\_1\\_4\\_8004\\_a.html](https://products.wera.de/en/zyklop_ratchets_and_accessories_the_zyklop_ratchets_the_zyklop_ratchets_1_4_the_zyklop_metal_ratchet_switch_1_4_8004_a.html)

Wera - 8004 A  
05004004001 - 4013288174024

Wera Werkzeuge GmbH  
Korzerter Straße 21-25  
D-42349 Wuppertal  
Tel: +49 (0)2 02 / 40 45-0  
E-Mail: [info@wera.de](mailto:info@wera.de)

The Zyklop Metal Ratchet Switch, 1/4"

**Zyklop Metal Switch**



Due to the ever-more confined working environment, space is becoming more and more an issue for the application of ratchets. Our product developers therefore intensively occupied themselves with the issue of confined working spaces, and Wera has now solved this problem. The extremely slim and robust Zyklop Metal ratchet with a long lever was what emerged. When the change in direction needs to be quick, the Zyklop Metal Switch ratchet is the right tool. When the socket must not get lost and a coincidental change of direction has to be avoided at all cost, the Zyklop Metal Push is the correct choice.



Due to the ever-more confined working environment, space is becoming more and more an issue for the application of ratchets. Our product developers therefore intensively occupied themselves with the issue of confined working spaces, and Wera has now solved this problem. The extremely slim and robust Zyklop Metal ratchet with a long lever was what emerged. When the change in direction needs to be quick, the Zyklop Metal Switch ratchet is the right tool. When the socket must not get lost and a coincidental change of direction has to be avoided at all cost, the Zyklop Metal Push is the correct choice.

**Slim design**



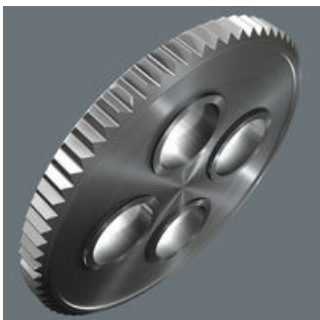
Forged, full metal ratchet (chrome-molybdenum) that is extremely robust with a long service life; slim design to enable work in very confined spaces.

**Reversible**



Switch lever for convenient change of direction.

**Small return angle**



Fine-pitched with 72 teeth for a return angle of only 5°

**Ball lock**



The ball lock ensures sockets and accessories are securely fitted, providing increased safety during operation. A short press on the release button allows the tool to be changed quickly.

**Web link**

[https://products.wera.de/en/zyklop\\_ratchets\\_and\\_accessories\\_the\\_zyklop\\_ratchets\\_the\\_zyklop\\_ratchets\\_1\\_4\\_the\\_zyklop\\_metal\\_ratchet\\_switch\\_1\\_4\\_8004\\_a.html](https://products.wera.de/en/zyklop_ratchets_and_accessories_the_zyklop_ratchets_the_zyklop_ratchets_1_4_the_zyklop_metal_ratchet_switch_1_4_8004_a.html)

Wera - 8004 A  
05004004001 - 4013288174024





Wera Werkzeuge GmbH  
Korzerter Straße 21-25  
D-42349 Wuppertal  
Tel: +49 (0)2 02 / 40 45-0  
E-Mail: [info@wera.de](mailto:info@wera.de)

8004 A Zyklus Metal Ratchet with switch lever and 1/4" drive, 1/4" x 141 mm



The Zyklus Metal Ratchet Switch, 1/4"

Further versions in this product family:

	 inch	 mm	 mm	 mm
05004004001	1/4"	141	19	22

Web link  
[https://products.wera.de/en/zyklus\\_ratchets\\_and\\_accessories\\_the\\_zyklus\\_ratchets\\_the\\_zyklus\\_ratchets\\_1\\_4\\_the\\_zyklus\\_metal\\_ratchet\\_switch\\_1\\_4\\_8004\\_a.html](https://products.wera.de/en/zyklus_ratchets_and_accessories_the_zyklus_ratchets_the_zyklus_ratchets_1_4_the_zyklus_metal_ratchet_switch_1_4_8004_a.html)

Wera - 8004 A  
05004004001 - 4013288174024

Wera Werkzeuge GmbH  
Korzerter Straße 21-25  
D-42349 Wuppertal  
Tel: +49 (0)2 02 / 40 45-0  
E-Mail: [info@wera.de](mailto:info@wera.de)