



EAN:	4013288144607	Size:	422x77x45 mm
Part number:	05003692001	Weight:	1160 g
Article number:	8002 C Set	Country of origin:	CZ
		Customs tariff number:	82041100

- For loads of at least 600 Newton metres
- Push-through square drive for right/left switchover
- Including hammer function
- Multi-component Kraftform handle optimised to withstand pressure, impact and tensile loads
- Comes in a set with practical holster for e.g. belt attachment

The ratchet that can also be safely and officially used as a hammer. The KOLOSS is a reversible, heavy-duty ratchet that can be used with a load of at least 600 Newton metres. The dual ratchet teeth and the minimum return angle of only 6° ensure rapid and precise screwdriving even in confined situations. And the best thing: absolutely no impact on the hammer faces, however hard, can destroy the ratchet mechanism. Multi-component Kraftform handle optimised to withstand pressure, impact and tensile loads; take-up for KOLOSS extension 8780 C and KOLOSS centring pin 8781 C at end of handle. Comes in a set with practical holster for e.g. belt attachment or to a machine with the aid of the snap hook as well as a pad to protect materials and the surface of the workpiece.

Web link

https://products.wera.de/en/zyklop_ratchets_and_accessories_koloss_8002_c_set.html

Wera - 8002 C Set
 05003692001 - 4013288144607

Wera Werkzeuge GmbH
 Korzelter Straße 21-25
 D-42349 Wuppertal
 Tel: +49 (0)2 02 / 40 45-0
 E-Mail: info@wera.de

Set contents:



8782 C
05003697001 1 x # 2 x 50 mm

Typical fields of application



The heavy-duty ratchet that can also be safely used as a hammer.



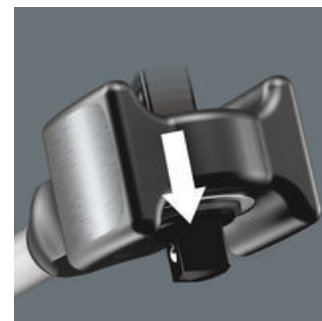
Typical fields of application are mechanical engineering, boatbuilding, mining, aircraft construction, bridge building, commercial vehicle construction and maintenance, railway and road construction and maintenance, industrial plant and equipment construction, high-bay warehouse construction, petroleum industry and many more.

Square drive



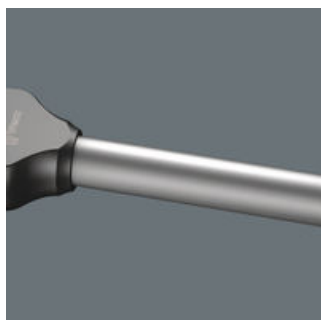
Non-removable sealed and hardened square drive for tough jobs.

Changing ratchet direction



Changing the ratchet direction using a hardened push-through square drive ensures great resilience, since there is no susceptible switching mechanism that could be damaged by hammer blows. This is far more robust than a forward/reverse switch.

Tubular shaft



Tubular shaft minimises impact vibrations.

Dry-fined hammer face



Used with rubber pad attachments to protect materials and surfaces.

Drop-forged hammer head



The drop-forged hammer head is permanently pinned to the shaft in a form-fit joint. This guarantees an almost non-detachable positioning of the hammer head on the handle.

Dual ratchet teeth



Gives the robust 30 saw teeth the precision engineering effect of 60 fine teeth with a 6° return angle.

Web link

https://products.wera.de/en/zyklop_ratchets_and_accessories_koloss_8002_c_set.html

Wera - 8002 C Set
05003692001 - 4013288144607

Wera Werkzeuge GmbH
Korzerter Straße 21-25
D-42349 Wuppertal
Tel: +49 (0)2 02 / 40 45-0
E-Mail: info@wera.de