



SECTION 7 Parts

Parts

Replacement Parts

⚠ WARNING

- Replacement parts must be purchased through a local Weil-McLain distributor. When ordering, specify boiler model and size and include description and part number of replacement part. Results from using modified or other manufactured parts will not be covered by warranty and may damage boiler or impair operation.
- The boiler contains ceramic fiber and fiberglass materials. Use care when handling these materials per instructions on [page 77](#) of this manual. Failure to comply could result in severe personal injury.

NOTICE

Weil-McLain part numbers are found in this **Replacement parts section**.

Gas Conversion Kits

not shown	Conversion Kit Propane to Natural Gas	CGa 25 - 6	510-812-000
		CGa 7, 8	510-812-001
not shown	Conversion Kit Natural Gas to Propane	CGa 25-7	510-811-998
		CGa 8	510-811-999

High Altitude Conversion Kits - Natural Gas

not shown	CGa 25 4,500 to 6,999 Feet	381-359-296
	CGa 25 7,000 to 10,000 Feet	381-359-297
not shown	CGa 3-8 4,500 to 6,999 Feet	381-354-535
	CGa 3-8 7,000 to 10,000 Feet	381-354-359

High Altitude Conversion Kits - Propane

not shown	CGa 25 4,500 to 6,999 Feet	381-359-298
	CGa 25 7,000 to 10,000 Feet	381-359-299
not shown	CGa 3-8 4,500 to 6,999 Feet	381-354-537
	CGa 3-8 7,000 to 10,000 Feet	381-354-541

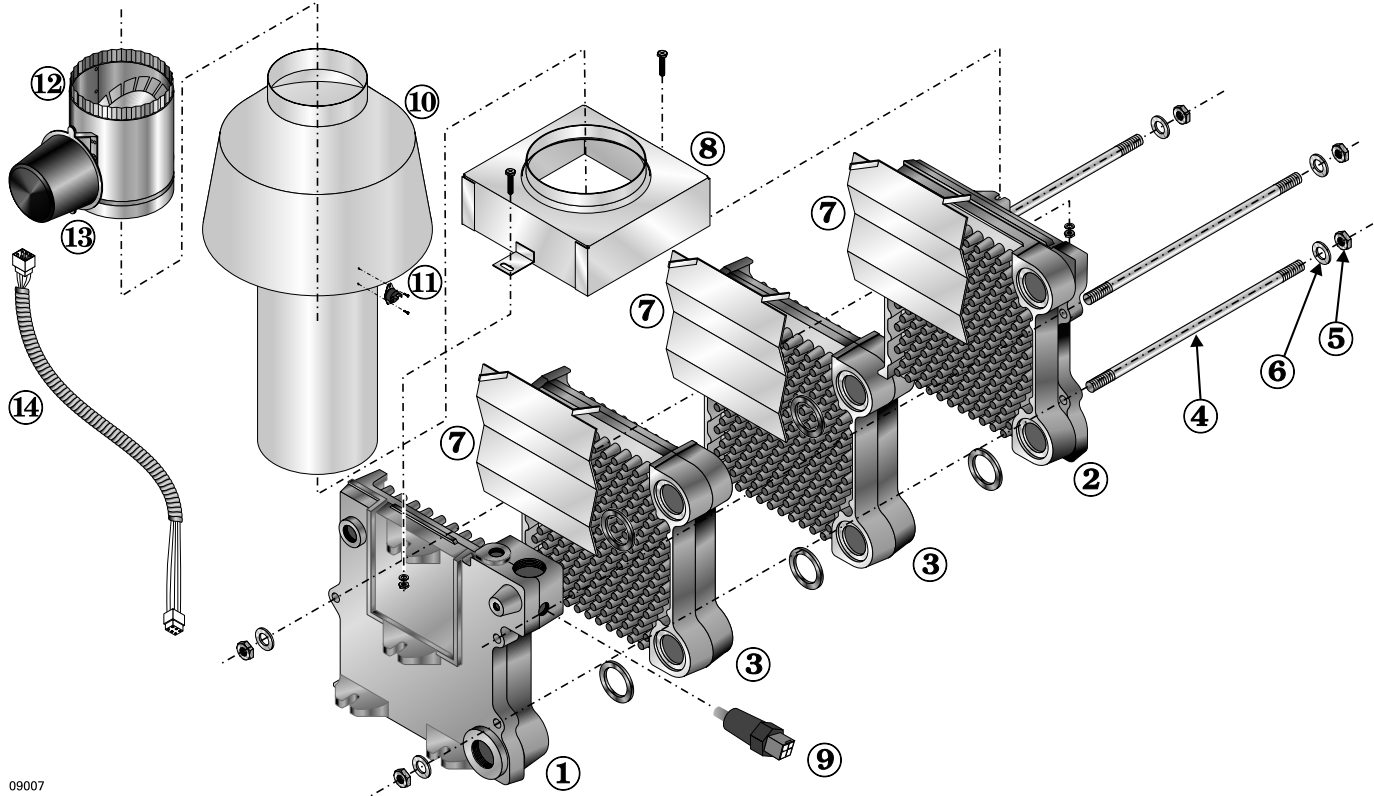




Parts (continued)

Section Assembly

Figure 32 Section assembly, flue collector, draft hood and vent damper



09007

Item Number	Description	Part Number
1	End section, left hand 51124	311-103-851
2	End section, right hand 51128	311-103-821
3	Intermediate section 51127	311-103-845
not shown	Replacement section assembly	CGa-25 & CGa-3 321-114-360 CGa-4 321-114-361 CGa-5 321-114-362 CGa-6 321-114-363 CGa-7 321-114-364 CGa-8 321-114-365
not shown	Section replacement kit, includes seals and sealant for 1 joint	381-354-527
4	Tie rod, 7/16" without nut (3 per boiler):	CGa-25 & CGa-3 560-234-500 CGa-4 560-234-501 CGa-5 560-234-502 CGa-6 560-234-503 CGa-7 560-234-504 CGa-8 560-234-505
5	Nut, 7/16" (2 per tie rod)	561-928-235
6	Washer, 7/16" (1 per tie rod)	562-248-684
7	Radiation plate (1 per joint)	CGa 25 & 3 460-003-018 CGa 4-8 460-003-017
8	Collector hood	CGa-25 381-354-625 CGa-3 381-354-626 CGa-4 381-354-627 CGa-5 381-354-628 CGa-6 381-354-926 CGa-7 381-354-630 CGa-8 381-354-631

Item Number	Description	Part Number
9	Temperature/LWCO sensor	381-356-589
10	Draft hood	CGa-25 450-021-240 CGa-3 450-021-241 CGa-4 450-021-242 CGa-5 450-021-243 CGa-6 450-021-244 CGa-7 450-021-245 CGa-8 450-021-246
11	Spill switch (210°F)	CGa-25 - 8 510-300-013
12	Vent Damper	CGa 25 & 3 . . 4" 381-800-863 CGa-4 5" 381-800-864 CGa-5 & 6 . . 6" 381-800-865 CGa-7 & 8 . . 7" 381-800-866
13	Vent Damper Actuator	510-512-337
14	Vent Damper Harness	381-359-436

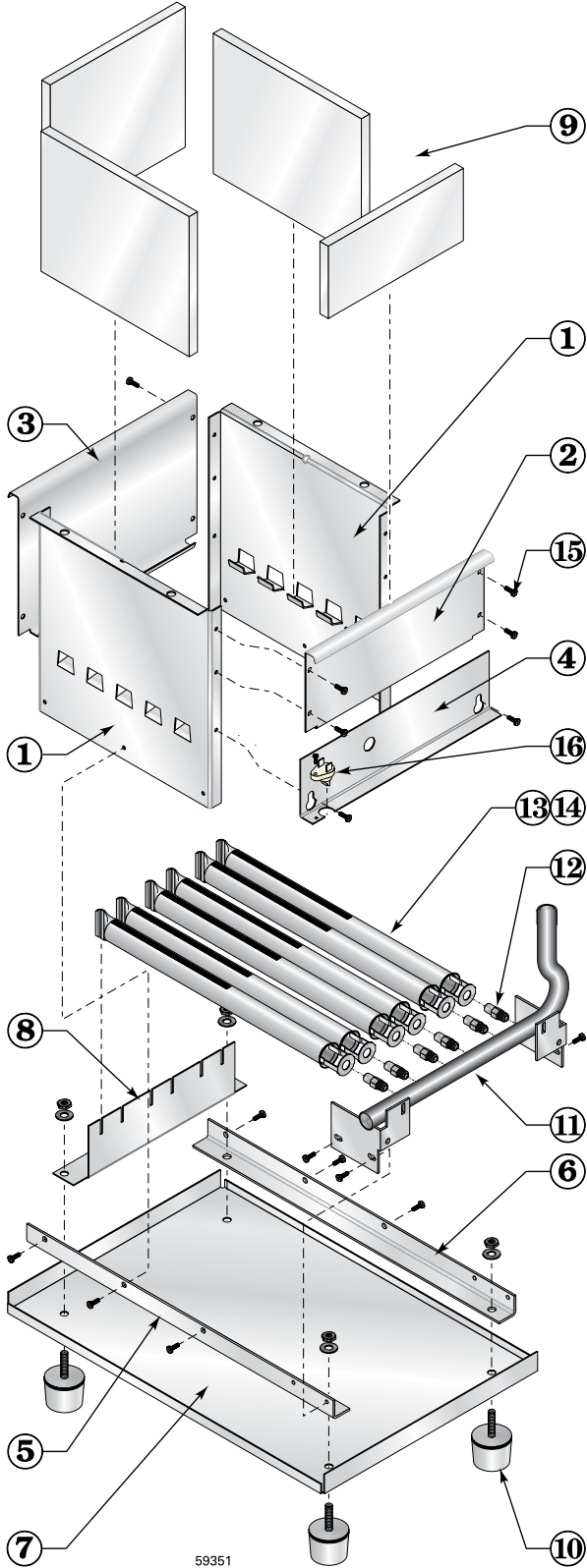
7



Parts (continued)

Base

Figure 33 Base assembly, manifold, orifices and burners



Item Number	Description	Part Number
	Base assembly kit (includes base panels items 1, 2, 3, 4, 5, 6 and 7, plus insulation, air box gaskets, and hardware)	CGa-25 . . . 381-354-362 CGa-3 . . . 381-354-356 CGa-4 . . . 381-354-357 CGa-5 . . . 381-354-358 CGa-6 . . . 381-354-359 CGa-7 . . . 381-354-360 CGa-8 . . . 381-354-361
1	Base side panel (in Base assembly)	
2	Base front cross-tie assembly (in Base assembly)	
3	Base back cross-tie assembly (in Base assembly)	
4	Access panel (in Base assembly)	
5	Base pan angle, left side (in Base assembly)	
6	Base pan angle, right side (in Base assembly)	
7	Base pan (in Base assembly)	
8	Burner rest	CGa-25 . . . 450-003-742 CGa-3 . . . 450-003-736 CGa-4 . . . 450-003-737 CGa-5 . . . 450-003-738 CGa-6 . . . 450-003-739 CGa-7 . . . 450-003-740 CGa-8 . . . 450-003-741
9	Base insulation kit (included insulation for all base parts above plus gasket material needed between block assembly and base)	CGa-25 . . . 381-354-518 CGa-3 . . . 381-354-518 CGa-4 . . . 381-354-518 CGa-5 . . . 381-354-518 CGa-6 . . . 381-354-519 CGa-7 . . . 381-354-519 CGa-8 . . . 381-354-519
10	Boiler leg kit, Qty:4 550-320-219	
11	Manifold	CGa-25 . . . 591-126-615 CGa-3 . . . 591-126-616 CGa-4 . . . 591-126-617 CGa-5 . . . 591-126-618 CGa-6 . . . 591-126-619 CGa-7 . . . 591-126-556 CGa-8 . . . 591-126-557
12	Main Burner orifice - Natural gas Main Burner orifice - Propane	CGa 25 . . . 560-529-118 CGa-3-8 . . 560-528-997 CGa 25 . . . 560-529-115 CGa-3-8 . . 560-529-120
13	Burner, stainless steel 512-200-077	
14	Burner with pilot 512-200-078	
15	Screw, 10-32 x 0.38 STP type D hex, washer head slot available at local supply house	
16	Rollout thermal fuse element 512-050-230	

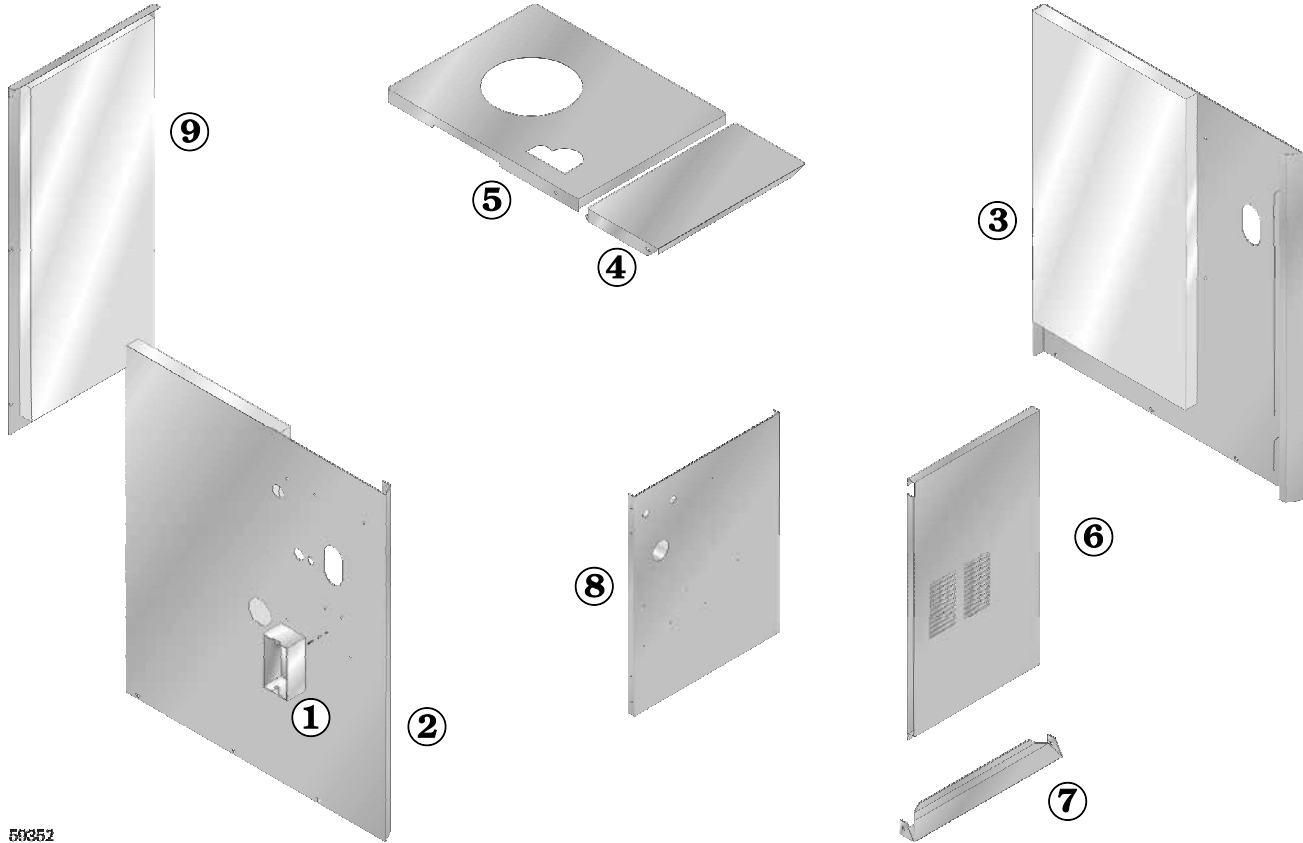




Parts (continued)

Jacket

Figure 34 Jacket assembly



58352

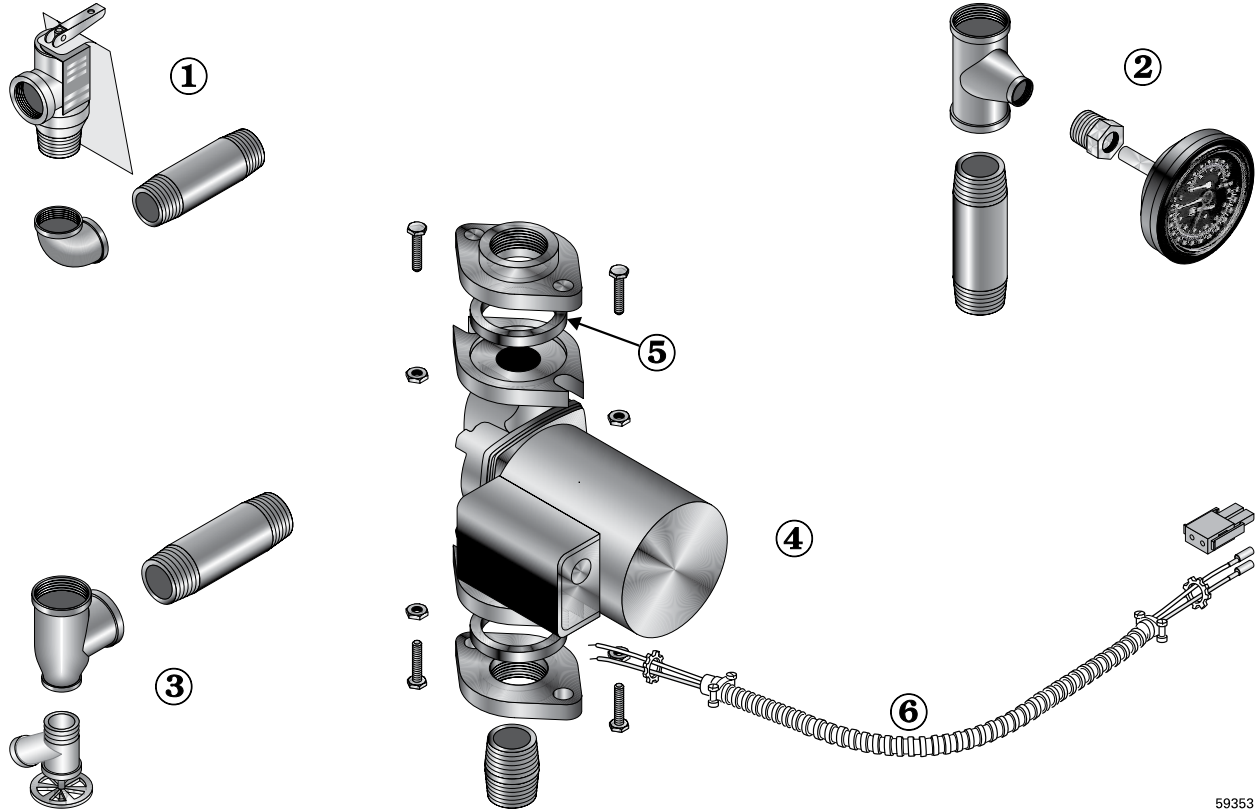
Boiler Model	1	2		3	4	5	Boiler Model
	Junction box, 2 x 4	Jacket panel, left side, with insulation		Jacket panel, right side, with insulation	Jacket panel, top front	Jacket panel, top rear	
		Natural Gas Spark Pilot	Propane Gas Spark Pilot				
Part numbers							
CGa-25		381-359-449	381-359-456	381-359-484	381-359-230	381-359-491	CGa-25
CGa-3		381-359-450	381-359-457	381-359-485	381-359-230	381-359-492	CGa-3
CGa-4	(Available at local supply house)	381-359-451	381-359-458	381-359-486	381-359-231	381-359-493	CGa-4
CGa-5		381-359-452	381-359-459	381-359-487	381-359-232	381-359-494	CGa-5
CGa-6		381-359-453	381-359-460	381-359-488	381-359-233	381-359-495	CGa-6
CGa-7		381-359-454	381-359-461	381-359-489	381-359-234	381-359-496	CGa-7
CGa-8		381-359-455	381-359-462	381-359-490	381-359-235	381-359-497	CGa-8
Boiler Model		6	7	8	9	10	
	Jacket panel, door	Jacket cross tie, bottom front	Jacket panel, interior, with insulation	Jacket panel, rear, with insulation	Not shown — touch-up paint		
Part numbers							
CGa-25	381-359-248	381-359-260	381-359-266	381-359-272			CGa-25
CGa-3	381-359-248	381-359-260	381-359-266	381-359-272			CGa-3
CGa-4	381-359-249	381-359-261	381-359-267	381-359-273	381-359-278 Cloud		CGa-4
CGa-5	381-359-250	381-359-262	381-359-268	381-359-274	384-000-141 Slate		CGa-5
CGa-6	381-359-251	381-359-263	381-359-269	381-359-275			CGa-6
CGa-7	381-35-9252	381-359-264	381-359-270	381-359-276			CGa-7
CGa-8	381-359-253	381-359-265	381-359-271	381-359-277			CGa-8



Parts (continued)

Trim

Figure 35 Trim assembly



59353

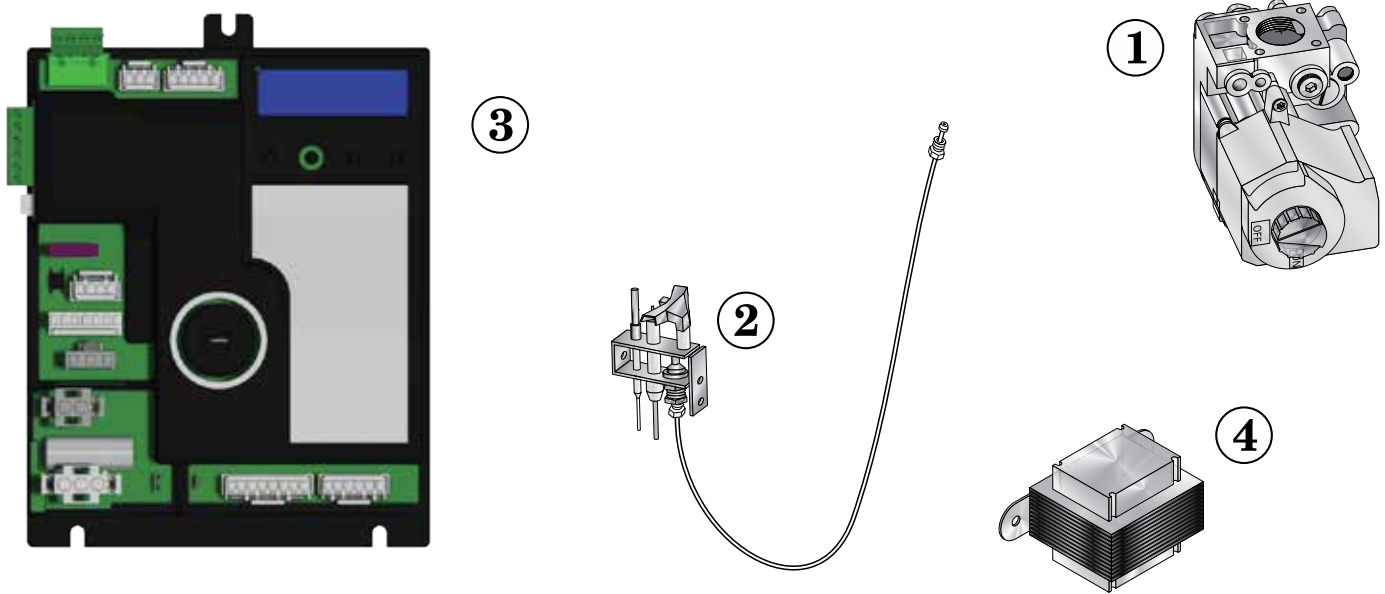
Item Number	Description	Part Number
1	Pressure relief valve, ASME, 30PSIG, 3/4" <i>(Fittings shown are factory-installed on boiler.)</i>	383-500-095
2	Combination pressure-temperature gauge, 3 1/8," diameter, short shank <i>(Fittings shown are shipped loose with boiler.)</i>	380-000-000
3	Drain valve, 3/4" <i>(Fittings shown are included with boiler.)</i>	511-210-423
4	Circulator <i>(Fittings shown are shipped loose with boiler.)</i>	CGa 25 - 5 511-405-153 CGa 6 - 8 511-405-113
5	Circulator gasket, universal (2 per boiler)	590-317-535
not shown	Circulator hardware kit, includes: 1 flange, 2 nuts, 2 screws, 1 gasket — 3/4" NPT — CGa-25 381-354-530 1" NPT — CGa-3 through CGa-5 381-354-525 1 1/4" NPT — CGa-6 and CGa-7 381-354-526 1 1/2" NPT — CGa-8 381-354-531	
6	Circulator wiring harness kit, spark-ignited with Molex (loose)	381-356-528



Parts (continued)

Spark Ignited Controls

Figure 36 Gas control components



Item Number	Description	Part Number
Natural gas components		
1	Gas Valve, 1/2" x 1/2" Gas valve, 3/4" x 3/4"	CGa-25 through CGa-6 CGa-7 & CGa-8
511-044-381		
511-044-382		
2	Pilot kit w/orifice & aluminum pilot gas tubing	511-330-218
Propane gas components		
1	Gas Valve, 3/4" x 3/4" Gas Valve, 3/4" x 3/4"	CGa-25 through CGa-7 CGa-8
511-044-356		
511-044-366		
2	Pilot kit w/orifice & aluminum pilot gas tubing	511-330-273
Natural gas and Propane gas components		
3	Control Module - Natural gas - Propane gas	383-301-211 381-330-046
not shown	Wiring Harness, Controls to Control Module (Natural Gas). Wiring Harness, Controls to Control (Propane)	381-359-431 381-359-435
not shown	Wiring Harness, Control to Junction Box	381-359-447
not shown	Terminal Block, Thermostat Wiring	381-359-430
not shown	Wiring Harness, Water Temperature/LWCO Sensor	381-359-438
4	Control Transformer	383-500-628
Miscellaneous Optional Kits		
not shown	Outdoor Temperature Sensor - Wired	381-356-586
not shown	Outdoor Temperature Sensor - Wireless	384-000-325
not shown	Antifreeze, Sentinel X500, 1 Gallon	592-900-029
not shown	Antifreeze, Sentinel X500, 5 Gallon	592-900-006
not shown	Corrosion Inhibitor, Sentinel X100	592-900-002
not shown	Cleaner, Sentinel X400 (1 gallon)	592-900-028
not shown	Sentinel X100 Quick Test Kit	592-900-005