

Data Sheet | Item Number: 811-310

2-conductor fuse holder ; for cylindrical fuses 10 x 38 mm; 13/32" x 11/2"; 1-pole; without blown fuse indication; 750 VAC/ 1000 VDC; for DIN-rail 35 x 15 and 35 x 7.5; 16 mm²; CAGE CLAMP®; 16,00 mm²; light gray



<https://www.wago.com/811-310>



Color: light gray



Notes

Safety information 1

The fuse holder must not be opened under load.

Electrical data

Ratings per IEC/EN

Ratings per	IEC/HD 60269-2
Ratings (note)	Electrical ratings are specified in the technical data of both fuse terminal block and fuse. When selecting glass cartridge fuses, make sure that the listed power loss is not exceeded.
Nominal voltage (III/3)	690 V
Rated current	32 A

Ratings per IEC/EN 2

Rated voltage (III/3) 2	1000 V
-------------------------	--------

Ratings per UL 1059

Approvals per	UL 4248-1
Rated voltage (UL)	750 V 1000 V
Rated current (UL)	30 A

Ratings per CSA

Approvals per	CSA 22.2
Rated current (CSA)	30 A
Rated voltage (CSA)	600 V 1000 V

Power loss

Power loss P_1 max. overload and short-circuit protection (individual arrangement)	3 W
Power loss P_1 max. overload and short-circuit protection (group arrangement)	3 W
Power loss P_1 max. short-circuit protection (individual arrangement)	3 W
Power loss P_1 max. short-circuit protection (group arrangement)	3 W

General

Voltage type 1	AC
Voltage type 2	DC
Fuse receptacle	pluggable
Fuse type	Cylindrical fuse; 10 x 38 mm

Connection data

Connection points	2
Total number of potentials	1
Number of levels	1

Connection 1

Connection technology	CAGE CLAMP®
Actuation type	Operating tool
Connectable conductor materials	Copper
Solid conductor	2.5 ... 16 mm² / 14 ... 6 AWG
Fine-stranded conductor	2.5 ... 16 mm² / 16 ... 6 AWG
Strip length	12 ... 13 mm / 0.47 ... 0.51 inches
Pole number	1
Wiring direction	Side-entry wiring

Physical data

Width	17.5 mm / 0.689 inches
Height	105 mm / 4.134 inches
Depth from upper-edge of DIN-rail	55 mm / 2.165 inches

Mechanical Data

Mounting type	DIN-35 rail
Mounting (note)	The fixed foot of the fuse terminal block must face upwards so that the fuse cannot fall out.

Material Data

Note (material data)	Information on material specifications can be found here
Color	light gray
Material group	I
Insulation material	Polyamide (PA66)
Flammability class per UL94	V0
Fire load	0 MJ
Weight	1.1 g

Environmental requirements

Processing temperature	-35 ... +85 °C
Continuous operating temperature	-35 ... +85 °C

Commercial data

Product Group	1 (Rail Mounted Terminal Blocks)
eCl@ss 10.0	27-14-11-16
eCl@ss 9.0	27-14-11-16
ETIM 8.0	EC002705
ETIM 7.0	EC002705
PU (SPU)	12 pcs
Packaging type	Box
GTIN	4050821498889

Downloads

Environmental Product Compliance

Compliance Search

Environmental Product Compliance 811-310



Documentation

Additional Information

Technical Section

pdf
2142.18 KB



Bid Text

811-310

19.02.2019

xml
3.81 KB



811-310

14.03.2017

doc
25.50 KB



CAD/CAE-Data

CAD data

2D/3D Models 811-310



CAE data

EPLAN Data Portal
811-310



WSCAD Universe
811-310



ZUKEN Portal 811-310

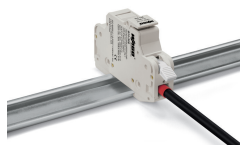
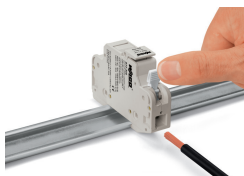
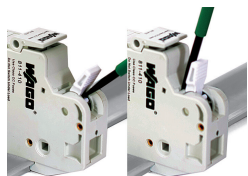


Installation Notes

Installation



Conductor termination



Commoning



Marking

