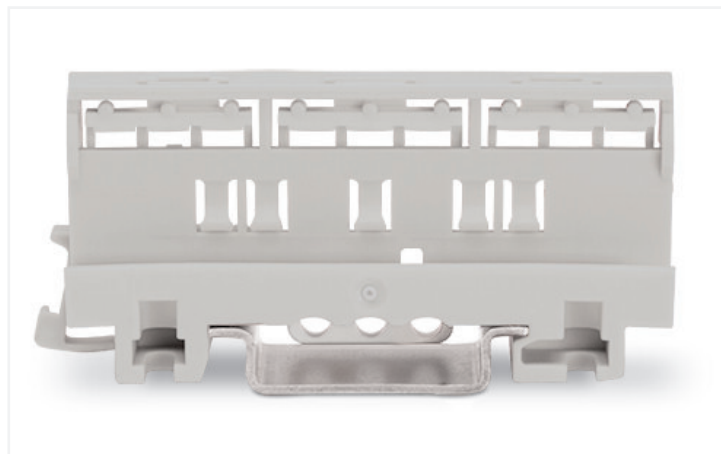
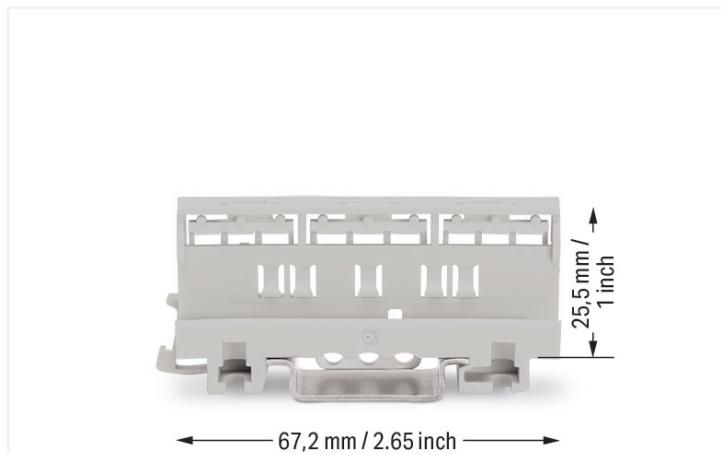


Data Sheet | Item Number: 221-501

Mounting carrier; for Ex applications; 221 Series - 4 mm²; for DIN-35 rail mounting/
screw mounting; light gray

<https://www.wago.com/221-501>



Color:  light gray

Physical data

Width 17.5 mm / 0.689 inches

Mechanical Data

Mounting type DIN-35 rail
Screw mount

Suitable for 2-, 3- and 5-conductor 221 Series Ex Splicing Connectors (4 mm²)

Material Data

Note (material data) [Information on material specifications can be found here](#)

Color light gray

Material group I

Insulation material Polyamide (PA66)

Flammability class per UL94 V0

Fire load 0 MJ

Weight 9.6 g

Commercial data

eCl@ss 10.0 27-14-11-92

eCl@ss 9.0 27-14-11-92

ETIM 8.0 EC002848

ETIM 7.0 EC002848

PU (SPU) 50 (10) pcs

Packaging type Box

Country of origin CN

GTIN 4055143753449

Customs tariff number 39269097900

Approvals / Certificates

Approvals for hazardous areas



Approval	Standard	Certificate Name
AEx Underwriters Laboratories Inc.	UL 60079	E185892 (AEx eb IIC resp. Ex eb IIC)
IECEX Physikalisch Technische Bundesanstalt	IEC 60079	IECEX PTB 18.0045U (Ex eb IIC Gb, Ex eb I Mb)
INMETRO TÜV Rheinland do Brasil Ltda.	IEC 60079	TÜV 19.1781 U

Downloads

Environmental Product Compliance

Compliance Search
Environmental Product Compliance 221-501

Documentation

Bid Text			
221-501	21.05.2019	xml 2.81 KB	
221-501	21.05.2019	docx 14.44 KB	
ausschreiben.de 221-501			

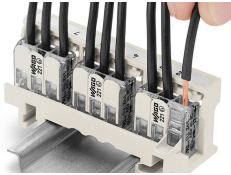
CAD/CAE-Data

CAD data
2D/3D Models 221-501

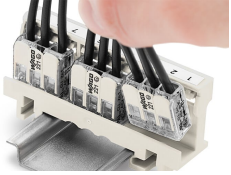
CAE data
EPLAN Data Portal 221-501
ZUKEN Portal 221-501

Installation Notes

Conductor termination



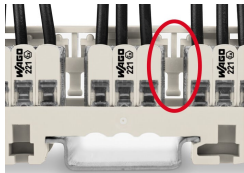
Removing a conductor.



Inserting a connector into the mounting carrier.



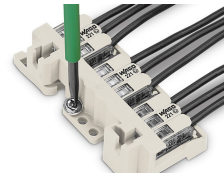
Removing a connector from the mounting carrier.



Mounting type (440 V)
Using spacers between the connectors.



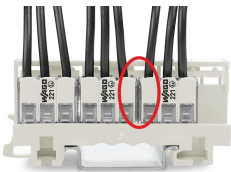
Mounting type (440 V)
Vertical mounting on DIN-35 rail



Mounting type (440 V)
Horizontal screw mounting on a flat surface



Mounting type (440 V)
Mounting the carrier via non-conductive screws.

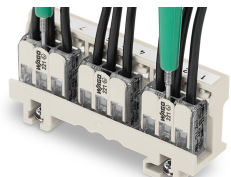


Mounting type (275 V)
No spacers are used between the connectors.



Mounting type (275 V)
Mounting the carrier using conductive screws.

Testing



Easily test inserted connectors in the carrier – however they are mounted.