

For Residential and Commercial Applications

| | | | |
|----------------|--|----------------------|--|
| Job Name | | Engineer / Architect | |
| Job Location | | Wholesaler | |
| Submittal Date | | Contractor | |

WRJ Thick Rubber Washer for Copper Water Heater Connectors

Use: For use with BrassCraft braided water heater connectors or copper water heater connectors with internal dielectric sleeves, manufactured after 1990

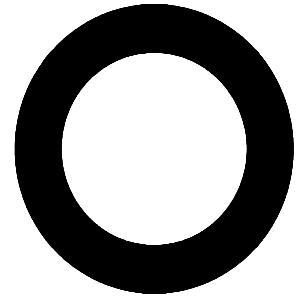
Design Features:

- **Less torque required to seal** especially on rough nipple surfaces

Operating Specifications:

Temperature: 40° to 180° F (NSF61 maximum 82° C)

Pressure: water pressures up to 125 psi maximum

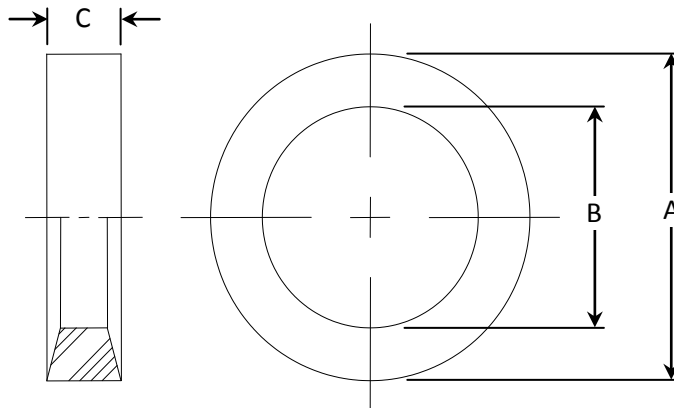


| MATERIAL SPECIFICATIONS | |
|-------------------------|----------------|
| Washer | Nitrile rubber |

| PART DIMENSIONS (Inches) | | | |
|--------------------------|--------|--------|--------|
| Model | DIA. A | DIA. B | DIM. C |
| WRJ | 1.020 | .687 | .240 |

Part Listing:

- WRJ Thick Rubber Washer for Copper or Braided Water Heater Connections



Listings & Certifications:

- For use with IAPMO & CSA listed ASME A112.18.6 / CSA B125.6 flexible connectors

This specification and all information contained herein is the confidential and exclusive property of BrassCraft Manufacturing, and shall not be disclosed to others without the written consent of BrassCraft. This specification must be returned to BrassCraft if requested.

