

Tech Data

Viega ProPress® Valves and Accessories by Model

Zero Lead Bronze Ball Valve - P x P Model 2971.1ZL



Part No.	Size (in)
79920	1/2
79925	3/4
79930	1
79935	1 1/4
79940	1 1/2
79950	2

- Smart Connect technology
- 250 CWP
- Body: Two Piece Zero Lead Bronze
- Ball: Full Port 316 Stainless Steel
- Stem: Blowout-Proof Eco Brass
- Sealing Element: EPDM
- Listings: APMO/ANSI Z1157, NSF®-61-372, NSF®-U.P. Code, Listed by NSF to Commercial Hot
- Conforms to: MSS SP-110
- Parameters:
250 psi Maximum Working Pressure
0°F to 250°F Operating Temperature

Zero Lead Brass Ball Valve - P x P Model 2971.1XL



Part No.	Size (in)
78300	2 1/2
78305	3
78310	4

- Smart Connect technology
- 250 CWP
- Body: Two Piece Zero Lead Brass
- Ball: Chromium-Plated Brass
- Locking Handle
- Sealing Element: EPDM
- Listings: APMO/ANSI Z1157, NSF®-61-372, NSF®-U.P. Code, Listed by NSF to Commercial Hot
- Conforms to: MSS SP-110
- Parameters:
250 psi Maximum Working Pressure
0°F to 250°F Operating Temperature

Zero Lead Bronze Ball Valve - P x P Model 2971.3ZL



Part No.	Size (in)
79923	1/2
79928	3/4
79933	1
79938	1 1/4
79943	1 1/2
79948	2

- Smart Connect technology
- 250 CWP
- Body: Two Piece Zero Lead Bronze
- Ball: Full Port 316 Stainless Steel
- Stem: Blowout-Proof 316 Stainless Steel
- Sealing Element: EPDM
- Listings: APMO/ANSI Z1157, NSF®-61-372, NSF®-U.P. Code, Listed by NSF to Commercial Hot
- Conforms to: MSS SP-110
- Parameters:
250 psi Maximum Working Pressure
0°F to 250°F Operating Temperature

Zero Lead Bronze Ball Valve - P x FPT Model 2971.4ZL



Part No.	Size (in)
79970	1/2
79975	3/4
79980	1

- Smart Connect technology
- 250 CWP
- Body: Two Piece Zero Lead Bronze
- Ball: Full Port 316 Stainless Steel
- Stem: Blowout-Proof Eco Brass
- Sealing Element: EPDM
- Listings: APMO/ANSI Z1157, NSF®-61-372, NSF®-U.P. Code, Listed by NSF to Commercial Hot
- Conforms to: MSS SP-110
- Parameters:
250 psi Maximum Working Pressure
0°F to 250°F Operating Temperature



Viega products are designed to be installed by licensed and trained plumbing and mechanical professionals who are familiar with Viega products and their installation. **Installation by non-professionals may void Viega LLC's warranty.**



This document is subject to updates. For the most current Viega technical literature, please visit www.viega.us.



Zero Lead identifies Viega products meeting the lead free requirements of NSF/ANSI/CAN 61 through testing under NSF/ANSI/CAN 372 (0.25% or less maximum weighted average lead content).

Zero Lead Bronze Ball Valve - P x Hose Model 2971.6ZL



Part No.	Size (in)
79875	1/2
79876	3/4

- Smart Connect technology
- 250 CWP
- Body: Two Piece Zero Lead Bronze
- Ball: Full Port 316 Stainless Steel
- Stem: Blowout-Proof Eco Brass
- Sealing Element: EPDM
- Listings: APMO/ANSI Z1157, NSF®-61-372, NSF®-U.P. Code, Listed by NSF to Commercial Hot
- Conforms to: MSS SP-110
- Parameters: 250 psi Maximum Working Pressure 0°F to 250°F Operating Temperature

Bronze Ball Valve - P x P - Model 2973



Part No.	Size (in)
24000	1/2
24005	3/4
24010	1
24015	1 1/4
24020	1 1/2
24025	2

- Smart Connect technology
- 250 CWP
- Body: Brass Body with Bronze Connections
- Ball: Full Port Chrome Plated Brass
- Stem: Blowout-Proof Brass
- Sealing Element: EPDM
- Listings: NSF®-U.P. Code, IAPMO/ANSI Z1157
- Conforms to: MSS SP-110
- Parameters: 250 psi Maximum Working Pressure 0°F to 200°F Operating Temperature

Bronze Ball Valve - P x FPT Model 2973.1



Part No.	Size (in)
24030	1/2
24035	3/4
24040	1

- Smart Connect technology
- 250 CWP
- Body: Brass Body with Bronze Connections
- Ball: Full Port Chrome Plated Brass
- Stem: Blowout-Proof Brass
- Sealing Element: EPDM
- Listings: NSF®-U.P. Code, IAPMO/ANSI Z1157
- Conforms to: MSS SP-110
- Parameters: 250 psi Maximum Working Pressure 0°F to 200°F Operating Temperature

Bronze Ball Valve - P x Hose Model 2973.3



Part No.	Size (in)
24090	1/2
24095	3/4

- Smart Connect technology
- 250 CWP
- Body: Brass Body with Bronze Connections
- Ball: Full Port Chrome Plated Brass
- Stem: Blowout-Proof Brass
- Sealing Element: EPDM
- Listings: NSF®-U.P. Code, IAPMO/ANSI Z1157
- Conforms to: MSS SP-110
- Parameters: 250 psi Maximum Working Pressure 0°F to 200°F Operating Temperature

316 Stainless Steel Ball Valve - P x P Model 4070



Part No.	Size (in)
81080	1/2
81085	3/4
81090	1
81095	1 1/4
81100	1 1/2
81105	2

- Smart Connect technology
- Body: 316 Stainless Steel
- Ball: 316 Stainless Steel Fullport
- Stem: Blow-out Proof 316 Stainless Steel
- Sealing Element: EPDM
- Listings: NSF®-61-372
- Conforms to: MSS SP-110
- Parameters: 200 psi Maximum Working Pressure 0°F to 250°F Operating Temperature

316 Stainless Steel Three Piece Ball Valve P x P - Model 4370.8



Part No.	Size (in)
85132	1/2
85133	3/4
85134	1
85136	1 1/4
85137	1 1/2
85138	2

- Smart Connect technology
- Body: Three Piece 316 Stainless Steel
- Ball: 316 Stainless Steel Fullport
- Stem: Blow-out Proof 316 Stainless Steel
- Sealing Element: FKM
- Conforms to: MSS SP-110
- Parameters: 200 psi Maximum Working Pressure 0°F to 250°F Operating Temperature

Shower Valve - Model 2842.5



- ½" copper stub outs
- DZR brass construction
- Pre-installed flush plug
- Plaster guard
- Can test and flush without valve cartridge
- Flat back for flush mounting
- Back-to-back capability so hot and cold can be reversed easily

Part No.	Size (in)
93516	½

Shower Valve - Model 2842.6



- ½" copper stub outs
- DZR brass construction
- Pre-installed flush plug
- Plaster guard
- Can test and flush without valve cartridge
- Flat back for flush mounting
- Back-to-back capability so hot and cold can be reversed easily
- With screwdriver stops

Part No.	Size (in)
93517	½

Semi Lug Butterfly Valve - Model 2873.81



- Body: Semi-Lug Spheroidal Cast Iron
- Disc: 316 Stainless Steel
- Stem: 316 Stainless Steel
- Handle: 10 Position Spring Locking Handle
- Mounting Flange: ISO 5211
- Liner: EPDM
- Conforms to: MSS SP 67, AWWA C504-6
- Parameters: 250 psi Maximum Working Pressure 0°F to 200°F Operating Temperature

Part No.	Size (in)
22074	2½
22075	3
22076	4

Inline Check Valve - Model 2974ZL



- Smart Connect technology
- Body: Zero Lead Bronze
- Check Valve Insert: POM Bubble Tight
- Cracking Pressure: 0.5 PSIG
- Sealing Element: EPDM
- Listings: NSF®-61-372, NSF®-U.P. Code
- Parameters: 200 psi Maximum Working Pressure 0°F to 180°F Operating Temperature

Part No.	Size (in)
79035	½
79040	¾
79045	1
79050	1¼
79055	1 ½
79060	2

Automatic Recirculation Regulating Valve Zero Lead - Model 2981.3ZL



- Automatic, thermostatic balancing
- Zero lead body
- Integrated isolation (ball) valve
- Adjustable temperature setpoint
- 1" BSP male threads
- NSF®-61-372

Part No.	Size (in)
79901	1 x 1

Zero Lead Manual Balancing Valve - Model 2980ZL



- DZR lead-free brass
- PT ports
- ProPress press-ends with Smart Connect technology
- Positive shut-off with memory stop
- NSF®-61-372

Part No.	Size (in)
82100	U-½
82105	L-½
82110	½
82115	¾
82120	1
82125	1¼
82130	1½
82135	2

Ball Valve Lockable Metal Handle - Model 2970.8

Use with ProPress Stainless Model 4070



Part No.	Size (in)
22143	1/2, 3/4, 1
22163	1 1/4, 1 1/2, 2

Ball Valve Lockable Metal Handle - Model 2971.8

Use with ProPress Models 2971.1ZL, 2971.3ZL, 2971.4ZL and 2971.6ZL



Part No.	Size (in)
22170	1/2, 3/4
22172	1, 1 1/4
22174	1 1/2, 2

XL Replacement Handle - Model 2971.8XL

Use with ProPress Model 2971.1XL



Part No.	Size (in)
78311	2 1/2 to 4

Ball Valve Metal Handle - Model 2973.8

Use with ProPress Models 2973, 2973.1, and 2973.3



Part No.	Size (in)
22176	1/2
22178	3/4, 1
22180	1 1/4, 1 1/2, 2

Replacement Handle - Model 4070.8

Use with ProPress Models 2971.1ZL, 2971.3ZL, 2971.4ZL, 2971.6ZL, 2870ZL; and MegaPress® Models 4170, 4870, 5170, 5970



Part No.	Size (in)
22425	1/2, 3/4
22430	1, 1 1/4,
22435	1 1/2, 2

Flange Bolt Set - Model 2959.7

Use with ProPress Model 2873.81



Part No.	Size (in)
19748	1, 1 1/4, 1 1/2
19758	2, 2 1/2, 3
19763	4

Ball Valve Stem Extension Kit - Model 2970.96

Use with ProPress Stainless Model 4070



Part No.	Size (in)
23442	1/2, 3/4, 1
23444	1 1/4, 1 1/2, 2

Ball Valve Stem Extension Kit - Model 2971.96

Use with ProPress Models 2971.1ZL, 2971.3ZL, 2971.4ZL and 2971.6ZL and PureFlow® Model 2870ZL



Part No.	Size (in)
23443	1/2, 3/4
23445	1, 1 1/4
23447	1 1/2, 2

Ball Valve Stem Extension Kit - Model 2973.96

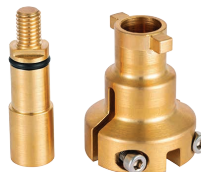
Use with ProPress Models 2973, 2973.1, and 2973.3



Part No.	Size (in)
23449	1/2
23451	3/4, 1
23453	1 1/4 to 2

Lockable Stem Extension - Model 2971.66

Use with ProPress Models 2971.1ZL (only with 2971.8), 2971.3ZL, 2971.4ZL, 2971.6ZL, 2870ZL; MegaPress Models 4170, 4870, 5170, 5970; and MegaPressG Models 6675, 6675.1, 6675.2, 6675.3



Part No.	Size (in)
23500	1/2, 3/4
23505	1, 1 1/4,
23510	1 1/2, 2

Lockable Stem Extension - Model 2971.9XL

Use with ProPress Model 2971.1XL



Part No.	Size (in)
78312	2 1/2 to 4

Lockable Stem Extension - Model 4070.96

Use with ProPress Models 2971.1ZL (only with 2971.8), 2971.3ZL, 2971.4ZL, 2971.6ZL, 2870ZL; MegaPress Models 4170, 4870, 5170, 5970; and MegaPressG Models 6675, 6675.1, 6675.2, 6675.3



Part No.	Size (in)
23515	1/2, 3/4
23520	1, 1 1/4
23525	1 1/2, 2

Wing Style Handle - Model 2971.26

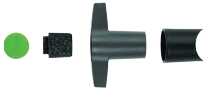
Use with ProPress Models 2971.1ZL, 2971.3ZL, 2971.4ZL, 2971.6ZL, 2870ZL; MegaPress Models 4170, 4870, 5170, 5970; and MegaPressG Models 6675, 6675.1, 6675.2, 6675.3



Part No.	Size (in)
22400	1/2, 3/4
22405	1, 1 1/4
22410	1 1/2, 2

Thermal Insulated Handle - Model 2971.46

Use with ProPress Models 2971.1ZL, 2971.3ZL, 2971.4ZL, 2971.6ZL, 2870ZL; and MegaPress Models 4170, 4870, 5170, 5970



Part No.	Size (in)
23530	1/2, 3/4
23535	1, 1 1/4
23540	1 1/2, 2

Insulated Handle Replacement Cap - Model 2971.47

Spare part for Model 2971.46



Part No.	Size (in)
22415	1/2, 3/4, 1
22420	1 1/4, 1 1/2, 2