

VP522A & B SEQUENCING WATER VALVE

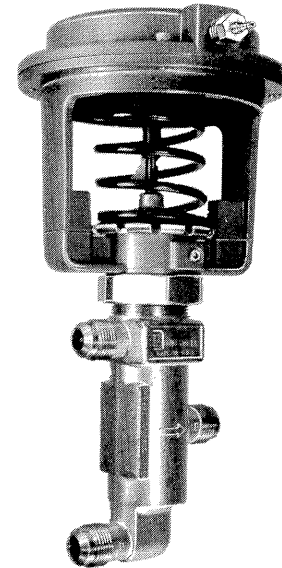
Installation Instructions

BEFORE INSTALLING, NOTE

Plumb the valve so water flow direction agrees with the arrow on the body.

When installing the valve, allow space for actuator removal and service.

It may be necessary, due to space limitations, to remove the actuator before installing the valve body. Follow the procedures shown in Figure 3. Reverse this procedure to replace the actuator.



R1020

INSTALLATION

1. Mounting bracket No. 313827A (ordered separately) may be used for internal mounting of the 3/8-inch (nominal) valve as shown in Figure 1.
2. Mount the valves directly into the water line using 45-degree SAE flare nuts (not furnished), as shown in Figure 2.
3. To facilitate connection of air lines, back off the two setscrews in the base of the actuator to permit actuator rotation.

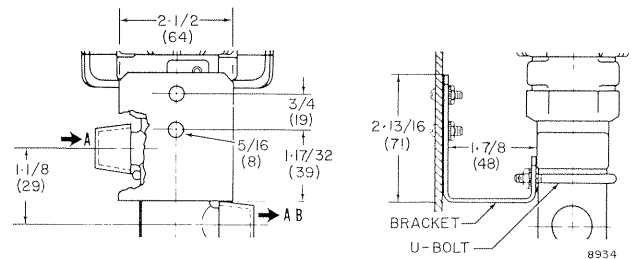


Fig. 1. Bracket No. 313827A Dimensions in Inches (Millimeters).

Table 1. VP522A & B Approximate Dimensions in Inches (Millimeters). See Fig. 3.

Nominal Valve Size	Copper Tubing Size		A	B	C	D	E	F	G	H
	Nominal	OD								
3/8	3/8	1/2	9-13/16 (249)	1-3/16 (30)	3-5/8 (92)	13/32 (10)	1-11/16 (43)	3-3/8 (86)	1-5/8 (41)	5-1/8 (130)
1/2	1/2	5/8	9-15/16 (252)	1-1/2 (38)	3-5/32 (80)	11/16 (17)	2-1/4 (57)	4-1/2 (114)	1-19/32 (40)	5-1/8 (130)
3/4	3/4	7/8	9-15/16 (252)	1-1/2 (38)	3-5/32 (80)	11/16 (17)	2-1/4 (57)	4-1/2 (114)	1-19/32 (40)	5-1/8 (130)

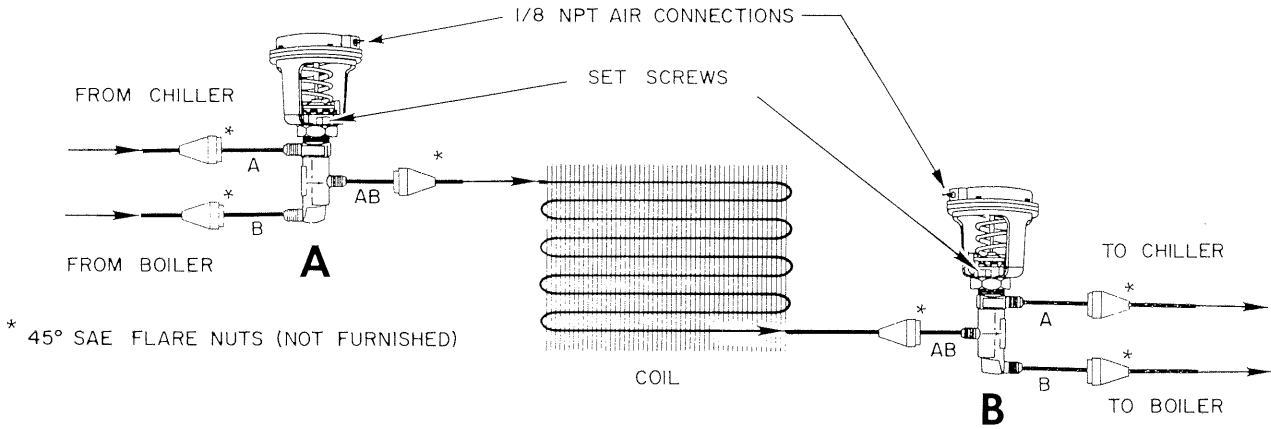


Fig. 2. Typical VP522A & B Valve Installation.

8932

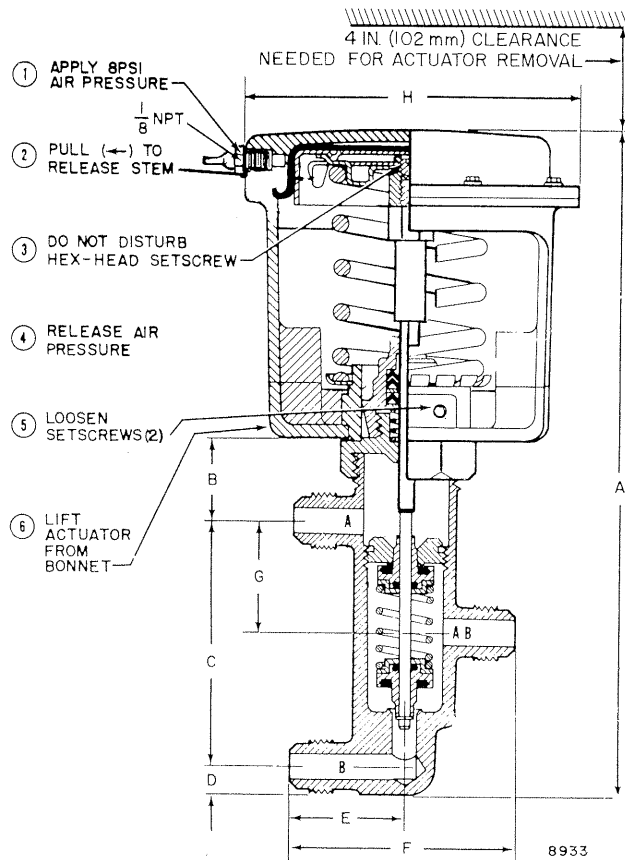


Fig. 3. VP522 Approximate Dimensions in Inches (Millimeters). See Table 1.

CHECKOUT AND TESTING

Be sure the circulator pump is running before attempting valve adjustment.

1. Vary the branch line pressure to the inlet valve on VP522A units. Note the pressure range at which no movement (dwell) occurs.
2. Repeat above procedure for the VP522B.

3. Using a screwdriver or spring adjustment wrench, adjust the tension of the spring on the VP522B by turning the spring retainer ring.

Adjust the VP522B so that it switches during the VP522A dwell for increasing *and* decreasing branch line pressure.