



HIGH EFFICIENCY CONDENSING WATER BOILERS

DEPENDABLE COMFORT
SUPERIOR DESIGN



The Comfortable Choice
For Your Home Heating Needs

Wall Mounted and Floor Standing
Combi and Heating Appliances (MAC/MAH)



ECO Friendly



Assembled in the USA

There are some things you can always depend on...



www.utica boilers.com
PN 240011407 Rev. [03/08/22]

Industry Leading Innovation For Your Home Heating Needs.

- **State-of-the-art** technology is continually tested and improved by our experienced team of Engineers right here in the USA.
- **Advanced materials and engineering** ensure years of worry-free performance, quiet operation, a sleek appearance and small wall-mounted or floor-standing footprint to save space.
- **Combination (COMBI) models** also offer domestic hot water and home heating in one appliance, eliminating the need for a traditional tank-style water heater.



Wall Mounted
MAC/MAH

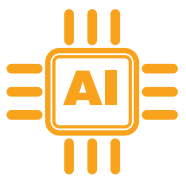


Floor Standing
MACF/MAHF

Advanced [AI] Control Technology



The advanced control with Artificial Intelligence [AI] continuously calibrates to ensure safe, reliable, and highly efficient operation.



*ADVANCED
[AI] CONTROL*



*PERFORMANCE
MONITORING*



*HIGH
EFFICIENCY*

- **Save Energy and Money!** The [AI] control automatically modulates the gas input, using more gas when needed to provide heat or domestic hot water (dishwasher, washer, and shower running simultaneously) and less gas when use is low; reducing energy use and utility costs.
- **Save Space!** The combination (COMBI) models provide both your home heating and your domestic hot water needs in one compact, super-efficient on-demand appliance. Our range of models provide 2.5 - 5 gallons per minute of domestic hot water.
- **ECO Friendly!** Less CO₂ emissions and ENERGY STAR® certified with up to 95% AFUE.



The Right Heating Solution For Your Home & Family

- **Enjoy Modern Comfort** when paired with radiant floor heating.
- **Additional Safety Features** ensure worry free operation.
- **Gas Adaptive Technology** automatically detects the type of gas being used, LP or Natural.
- **Heat Only models** pair with our optional H2O indirect hot water heaters available in 30 - 115 Gallon sizes.
- **Preheat Function** of the exchanger ensures immediate domestic hot water at the set temperature.



PRODUCT SPECIFICATIONS

MODELS			INPUT MBH ⁽¹⁾				DHW	AHRI CERTIFIED RATINGS		
Type	Wall Mounted	Floor Standing	CH Mode MAX	CH Mode MIN	DHW Mode MAX	DHW Mode MIN	Flow Rate GPM ⁽⁴⁾	Heating Capacity MBH ⁽¹⁾⁽²⁾	Net Water MBH ⁽¹⁾⁽³⁾	Efficiency AFUE ⁽²⁾
COMBI	MAC-115	MACF-115	93.5	16.6	115.5	16.6	2.5	85.4	74	95%
	MAC-150	MACF-150	125	22.0	153	22.0	3.5	113	98	95%
	MAC-205	MACF-205	164	29.5	205	29.5	5.0	153	133	95%
HEAT ONLY	MAH-75	MAHF-75	75	16.6				68.2	60	92%
	MAH-100	MAHF-100	93.5	16.6				85.4	74	95%
	MAH-125	MAHF-125	125	22.0				113	98	95%
	MAH-165	MAHF-165	164	29.5				153	133	95%

(1) 1000 Btu/h (British Thermal Units Per Hour)

(2) Heating capacity and AFUE (Annual Fuel Utilization Efficiency) are based on DOE (Department of Energy) test procedures.

(3) Net AHRI Ratings based on piping and pickup allowance of 1.15. Consult manufacturer before selecting boiler for installations having unusual piping and pickup requirements, such as intermittent system operation, extensive piping systems, etc.

(4) DHW (Domestic Hot Water) Flow Rate based on 70°F temperature rise.

TAKE ADVANTAGE OF
REBATES
with **95% AFUE**

DIMENSIONS	WALL MOUNTED	FLOOR STANDING
Height	30"	43 3/4" (Bottom of boiler to top of safety valve)
Width	17 3/4"	24 3/4" (Overall with manifold)
Depth	13 9/16" (75/100/115/125/150) 21 1/2" (165/205)	17 1/2" (75/100/115/125/150) 23 1/2" (165/205)

EXCEPTIONAL SUPPORT

When it comes to **support**, Utica Boilers offers service that's **beyond compare**.

Our **US-based** support team is here for you!

Visit uticaboilers.com to read product **testimonials** and find a Utica Boilers dealer in your area with our **FIND A DEALER** tool.



Warranty

- FREE 2-Year Parts & Labor Limited Warranty*
- 10 Year Limited Heat Exchanger Warranty

*Unit must be registered within 60 days from the date of original installation. All terms of Trinity Extended Service Agreement apply.



ECR International, Inc. 2201 Dwyer Avenue, Utica, NY 13501
Tel. 800 253 7900
www.ecrinternational.com

www.uticaboilers.com



All specifications subject to change without notice.
©2022 ECR International, Inc.
PN 240011407 Rev. [03/08/22]