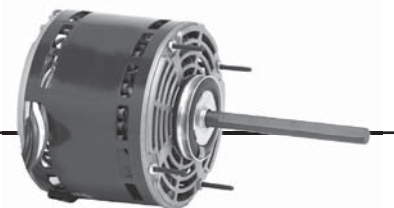


Permanent Split Capacitor Direct Drive Fan & Blower

5.6" Diameter, Open, Air Over

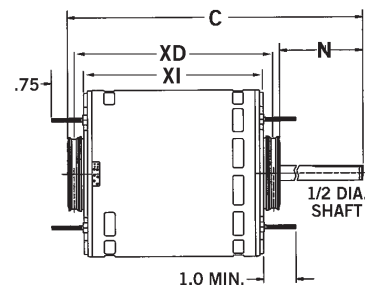


APPLICATIONS:

Residential and commercial direct drive fans and blowers.

FEATURES:

- Stud Extensions On Popular Models
- Designed for use with 370V Capacitors
- Class B Insulation
- 24" Leads
- Continuous Duty, Air Over
- Bearings Have All Angle Thrust System
- Reversible Rotation
- For Flex Mount, Order Catalog # 44; See Page 63
- Automatic Reset Thermal Overload Protector
- Connection and Capacitor Information Furnished in the Nameplate Data
- 2.5" Dia. Hub Rings Included
- All Angle Mount



Hub Ring Mount (2.5") except as noted, Without Capacitor

HP	RPM/ Spds.	Voltage	Catalog Number	Cap. MFD	Amps	Shaft N	Base XD	Shell XI	Total C	Ship Wt.	Notes	OEM
1/4	1075/3	115	1863	7.5	3.5	5.0	4.9	4.3	10.4	12		
	1625/3	115	1690	10.0	2.7	6.0	4.7	4.3	10.4	13		
	1075/3	208-230	1971	7.5	1.5	5.0	4.9	4.3	10.4	11		
	1075/3	277	600	4.0	1.6	5.0	5.1	4.6	10.7	14	69	
1/3	1075/3	115	1864	7.5	5.0	5.0	5.1	4.6	10.7	12		
	1625/3	115	1692	15.0	3.7	6.0	5.1	4.6	10.7	13		
	1075/3	208-230	1972	7.5	1.9	5.0	4.9	4.3	10.4	13		
	1075/3	277	601	4.0	2.2	6.0	5.2	4.7	10.7	14	69	
	1625/3	208-230	1693	5.0	2.1	4.5	5.1	4.6	10.7	13		
1/3-1/8	825/2	208-230	5469	7.5	2.4	4.5	-	5.3	9.8	17	72	
1/2	825/2	208-230	8064	20.0	4.4	2.5	5.6	6.1	9.0	21	69	LE
	1075/3	115	1865	10.0	6.5	5.0	6.0	5.4	10.4	19		
	1625/3	115	1694	20.0	5.5	5.0	5.9	5.3	11.4	17	A	
	1075/3	208-230	1973	10.0	2.9	5.0	5.9	5.3	11.4	19		
	1075/3	277	602	6.0	3.4	6.0	5.5	4.9	10.9	16	69	
	1075/3	115	1323	15	5.0	3.5	-	4.8	8.3	12	H11	RH
1/2-1/6	1075/4	115	5460	10.0/7.5	7.3	5.0	5.4	4.8	9.8	15	72	
	1075/4	208-230	5461	10/5	3.6	5.0	5.4	4.8	9.8	15	72	
3/4	1625/3	115	1696	15.0	8.6	6.0	6.1	5.6	11.7	20		
	1625/3	208-230	1697	10.0	4.4-4.2	6.0	6.1	5.6	11.7	18	A	
	1075/3	115	8904	15.0	9.5	5.0	6.0	5.4	10.4	19	69	
	1075/3	208-230	8905	15.0	4.0	5.0	6.0	5.4	10.4	19	69	
	1075/3	277	5847	15.0	4.1	6.0	6.7	5.6	13.2	19		
	1075/4	115	3340	7.5	12.1	6.0	4.8	5.3	12.4	18		CA
3/4	1075/5	208-230	8065	20	5.0	2.5	-	8.0	11.4	18		
	1075/4	115	6452	15.0	11.2	5.0	-	5.8	10.8	18	69, H11	
	1075/2	208-230	5471	20/10	4.1	5.0	6.6	6.1	11.6	21	72	
3/4-1/5	1075/2	115	5470	20/10	8.1	5.0	6.6	6.1	11.6	22	72	
1	1075/3	115	8906	20.0	12.1	5.0	6.6	6.1	12.2	20	H17	
	1075/3	208-230	8907	20.0	5.6	5.0	6.6	6.1	12.2	21	H17	
	1625/3	115	1699	25.0	11.1	6.0	6.4	5.9	12.9	21	H7	
	1625/3	208-230	1700		5.1	6.0	5.9	6.4	12.4	20		

CA = Carrier LE = Lennox

Note 69: No Stud Extension

Note A: Class A Insulation

Note H7: 36" Leads, 2.25" Dia. Hubs With 2.5" Dia. Kit Included.

Note H11: Band Mount

Note H17: Class B Insulation, Studs Shaft Side Only, Ball Bearings

Note 72: Includes 4 Holes In Shell For Rheem Mount

† All marks shown within this document are properties of their respective owners.

