

True RMS Advanced HVAC Clamp Meter w/ wireless to smartphone / tablet

True RMS - Designed for HVAC



Functions

- True RMS
- 600A AC
- μ A DC 0.1~2000
- 1000V DC
- 750V AC
- Resistance
- Capacitance
- Differential Temperature
-22°~752°F (-30°~400°C)
- Frequency
- Duty Cycle

Features

- Direct function button access
- Dual display
- Differential temperature
- LRA Inrush measurement
- Min / Max / Hold
- Backlit display
- Worklight
- Magnetic mount
- Wireless to App
- iOS® and Android™ compatible
- Input jack lockout
- Low battery lockout
- Visible high-voltage alert
- 6' drop durability
- 2 Year limited warranty

Standards

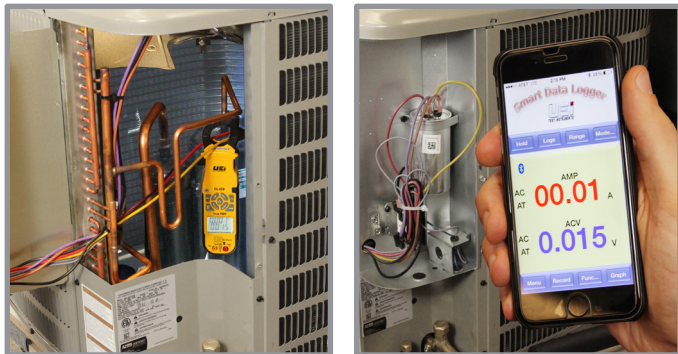
- cETLus Listed, FCC and RoHS
- Conforms to IEC61010-2-032
- Rated: CAT III 600V



RoHS
Compliant



Applications



Includes



- DL429 True RMS Clamp Meter
- 2 Silicon Test leads
- 2 Alligator clips
- 2 Thermocouples
- 6 AAA batteries
- Zippered case
- Instruction manual

Specifications

AC Amps Measurement - Jaw input

Range	Resolution	Accuracy	Overload Protection
60A	0.01A	± (2.9% + 15 digits)	600V RMS
600A	0.1A	± (1.9% + 8 digits)	

True RMS: 45Hz to 400Hz

* Minimum Current for Clamp Measurement: 0.2A

DC Low Amps Measurement - Test lead input

Range	Resolution	Accuracy	Overload Protection
600µA	0.1µA	± (1.2% + 3 digits)	2000µA / 600V RMS
2000µA	1µA		

DC Voltage Measurement

Range	Resolution	Accuracy	Overload Protection
600mV	0.1mV	± (0.5% + 4 digits)	1000V
6V	1mV		
60V	10mV		
600V	100mV		
1000V	1V		

AC Voltage Measurement

Range	Resolution	Accuracy	Overload Protection
600mV	0.1mV	± (2.0% + 5 digits)	750V RMS
6V	1mV		
60V	10mV		
600V	100mV		
750V	1V		

True RMS: 45Hz to 400Hz

Frequency Measurement

Range	Resolution	Accuracy	Overload Protection
99.99Hz	0.01Hz	± (1.0% + 4 digits)	600V RMS
999.9Hz	0.1Hz		
9.999kHz	1Hz		
99.99kHz	10Hz		

Sensitivity: 1.8V RMS

Duty Cycle Measurement

Range	Test Current	Overload Protection
1.0 ~ 99.0%	±(0.2% per kHz + 0.1% + 5 digits)	600V RMS

Audible Continuity

Overload Protection	Open Circuit Voltage
600V RMS	< 0.44V

Threshold Approx : < 40Ω

Resistance

Range	Resolution	Accuracy	Overload Protection
600Ω	0.1Ω	± (1.0% + 4 digits)	600V RMS
6kΩ	1Ω		
60kΩ	10Ω		
600kΩ	100Ω		
6MΩ	1kΩ	± (2.0% + 4 digits)	
60MΩ	10kΩ		

Capacitance

Range	Resolution	Accuracy	Overload Protection
60.00nF	0.01nF	± (3.5% + 6 digits)	600V RMS
600.0nF	0.1nF		
6.000µF	0.001µF		
60.00µF	0.01µF		
600.0µF	0.1µF		
2000µF	1µF		

Diode Test

Range	Open Circuit Voltage	Test Current (Typical)	Overload Protection
2.0V	< 1.6V DC	0.25mA	600V RMS

Temperature

Range	Resolution	Accuracy	Overload Protection
-22°F ~ 14°F (-30°C ~ -10°C)	0.1°F (0.1°C)	± (1.0% + 5.4°F) ± (1.0% + 3.0°C)	300V RMS
15°F ~ 752°F (-9°C ~ 400°C)	0.1°F (0.1°C)	± (1.0% + 3.6°F) ± (1.0% + 2.0°C)	

Sensor: K-Type Thermocouple, sensor accuracy not included

WWW.UEITEST.COM

PORTLAND, OR

Headquarters & Recertification Center
1-800-547-5740 • info@ueitest.com

INDIANAPOLIS, IN

Recertification Center
1-800-547-5740 • info@ueitest.com

VANCOUVER, BC

Recertification Center
ISO/IEC 17025:2005 • NIST Certification
1-877-475-0648 • infocanada@ueitest.com