

Split System Submittal Data

Ceiling Suspended Air Conditioner

System: 26PST1U6 Indoor/Outdoor: S-26PT1U6/U-26PS1U6



Job Name: _____
 Location: _____
 Engineer: _____
 Submitted to: _____
 Submitted by: _____
 Reference: _____

Approval: _____
 Date: _____
 Construction: _____
 Unit #: _____
 Drawing #: _____



General Data (at 230V)

Power V/PH/Hz 230/208/1/60
 Circuit Ampacity (A) 15-30 Indoor-Outdoor
 Fuse Size, Max. (A) 15-30 Indoor-Outdoor

Compressor DC Rotary Inverter
 No. used 1
 R.L. Amps - L.R. (A) 12.9-17.5
 Crankcase Heater (W) -

Outdoor Unit
 Fan type Propeller
 Dia. (in.) - No. Speeds 18-7/64-1
 Type Drive - No. Speeds Direct Inverter
 No. Poles (RPM) 8 - 800
 No. Motors (W) 1-90
 CFM (High) 1765
 F.L. Amps (A) 13.8

Coil Type Aluminum Fin & Copper Pipe
 Fin Type - Pipe Type Slit Plate - Inner Rifled
 Rows - F.P.I. 1-15.9
 Face Area (sq.ft.) 7.25
 Tube Size (in.) 3/8"

Indoor Unit
 Fan type Centrifugal
 Dia. & Length (in.) - No. Speeds 5-1/8 - 4
 No. Speeds 3 & Auto
 No. Poles (RPM, High) 4-1179
 No. Motors (W) 1-31
 CFM (Hi/Med/Lo) 550/490/460
 Indoor Sound Rating (Hi) (dB-A) 39
 F.L. Amps (A) 0.5

Coil Type Aluminum Fin & Copper Tube
 Fin Type - Pipe Type Slit Plate - Inner Rifled
 Rows - F.P.I. 3-14.9
 Face Area (sq.ft.) 1.81
 Tube Size (in.) 9/32"
 Drain Connection Size (in.) (1-1/4)

Refrigerant R410A
 Lbs. - R410a (outdoor unit) 4.19
 Control Electric Expansion Valve
 Connection Flare
 Line Length, Max 165
 Lift Difference, Max 50 (Outdoor lower), 100 (Outdoor higher)
 Line Size (in. O.D. Discharge) 3/8"
 Line Size (in. O.D. Suction) 5/8"

Dimensions (in.) H x W x D
 Indoor Unit (Uncrated) 7-17/32 x 51-3/16 x 26-3/8
 (Crated) 9-7/16 x 54-19/32 x 31-1/16
 Outdoor Unit (Uncrated) 30-23/32 x 37 x 13-3/8
 (Crated) 34-31/32 x 39-31/32 x 16-3/32

Weight Indoor Outdoor
 Net (lbs.) 57 128
 Shipping (lbs.) 68 148

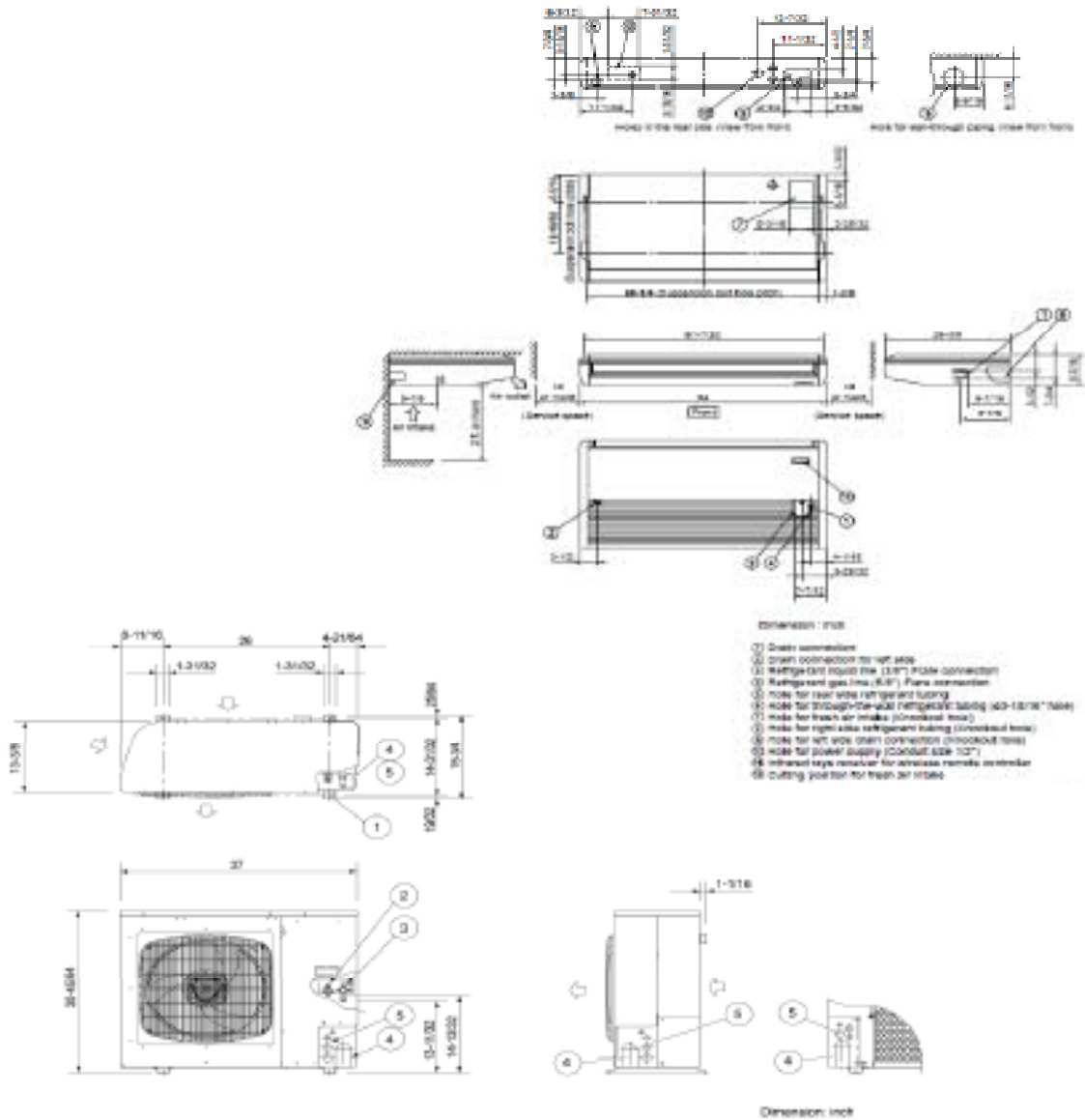
Shipping Volume Indoor Outdoor
 (cu.ft.) 8.9 13

Performance Data @ ARI Standard Conditions (230/208V)

Cooling
 Total Capacity (BTU/H) 24,000 (9,500-24,400)
 Sensible Capacity (BTU/H) 14,330
 Latent Capacity (BTU/H) 10,070
 SEER 14.5
 Dehumidification (Pints/H) 7.7
 Amps (A) 15.6/17.3
 Power Inputs (W) 2,880/2,880
 Outdoor Sound Rating (dB-A) 49

Dimensions

Feature		Option		
Controls		Microprocessor	Refrigerant Line Set	Available
Remote Controller	LCD Wired Type, Temp. Sensor Built In	IC Thermostat	Fresh Air Intake	Knock-Out
Temperature Control		72HR, ON/OFF	Condensate Drain Pump	Available
Timer		Built-In	Wireless Remote Controller	Available
Night Setback		Manual	Non-Removeable Remo-con Bracket	Available
Air Louver	(Horizontal) (Vertical)	Automatic		
Power Failure Automatic Restart		Built-In	Operating Range	
Self-Diagnosis		Built-In		
Air Filter	Washable, Anti-Mold		Cooling	Indoor Air Intake Temp. Outdoor Air Intake Temp.
			Maximum	95F DB/71F WB 115F DB
			Minimum	67F DB/57F WB 0F DB



Panasonic ideas for life
Panasonic North America
Air Conditioning Division
1690 Roberts Blvd., NW, Suite 110
Kennesaw, GA. 30144
<http://www.panasonic.com/aircon>

