

# **THERMO**™

*The Original Manufacturer of Thermopan*



*FAST TURNAROUND*



*FAST SHIPPING*



*CUSTOMER SERVICE*

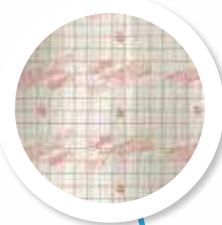


*QUALITY PRODUCTS*

2018 Product Catalog



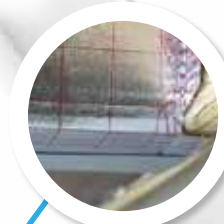
# **THERMO**<sup>TM</sup> *SOLUTIONS*



**THERMOPAN**  
Page 2



**ADHESIVE  
TAPE**  
Page 24



**CONNECTORS**  
Page 5



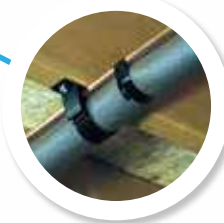
**R-8 DUCT WRAP**  
Page 7



**HEADERS**  
Page 4



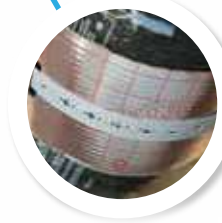
**FOAMS**  
Page 13



**SNAP  
CLAMPS**  
Page 16



**SNAP  
GRILLES**  
Page 20



**SADDLES**  
Page 18



**THERMOMAXBOND HS**  
Page 12



**LEVELERS**  
Page 26



**SEALANTS**  
Page 10



**THIMBLES**  
Page 22



**BUTTON-LOK**  
Page 31



**REFLECTIVE  
INSULATION**  
Page 6



**THERMO  
RUFF PLATES**  
Page 28



**FRAMES**  
Page 14



**BRACKETS**  
Page 30



## The residential panning standard for North America

The product that built our company, and continues to build our homes!

### FIRE-RESISTANT

- No duct noise
- Satisfied homeowners
- Excellent for open web trusses
- Lightweight and easy to install
- Will not sustain combustion
- Airspace created provides R-Value = 5
- No shop fabrication and no cut hands
- Four (4) precision pre-cut header sizes available

Made from Recycled Products :: MADE IN U.S.A. AND CANADA

PRODUCT	ORDER #	SIZE	PC/BOX
FR THERMO-PAN	16048	16"x 47.5"	25
FR THERMO-PAN	19048	19.5"x 47.5"	25
FR THERMO-PAN	22048	22"x 47.5"	25
FR THERMO-PAN	24048	24"x 47.5"	25
FR THERMO-PAN	32036	32"x 35.5"	25
FR THERMO-PAN	32039	39.5"x 32"	25
FR HEADERS-STD.	16012-BOX-75	16"x 12"	75
FR HEADERS-STD.	16012R	16"x 12"	125
FR HEADERS-STD.	16016R	16"x16"	125
FR HEADERS-I-JOIST	16017R	16"x17"	125
FR HEADERS-I-JOIST	16017-BOX-75	16"x 17"	75
FR HEADERS-I-JOIST	16019R	19"x 16"	125

### ULTRA FIRE-RESISTANT

- Performance Tested - **UL723 Test Standard**
- Look for these ETL® test values on every piece of Fire-Resistant Thermo-Pan®
  - Flame Spread 15, Smoke Index 5
- **Class 1 Fire Rating**
- Made from recycled products
- Made in USA and Canada

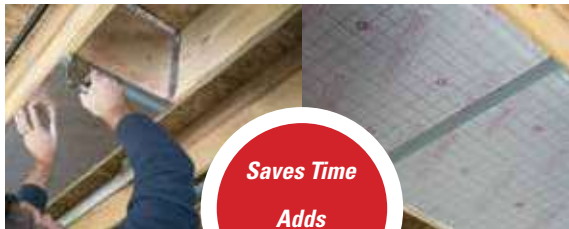
PRODUCT	ORDER #	SIZE	PC/BOX
ULTRA FR THERMO-PAN	16050*	16"x 47.5"	25
ULTRA FR THERMO-PAN	19050*	19.5"x 47.5"	25
ULTRA FR THERMO-PAN	24050*	22"x 47.5"	25
ULTRA FR HEADER	16013-BOX-75	16"x 12"	75
ULTRA FR HEADER	16013	16"x 12"	125
ULTRA FR HEADER	16015	16"x16"	125
ULTRA FR I-JOIST HEADER	16018-BOX-75	16"x17"	75
ULTRA FR I-JOIST HEADER	16018	16"x 17"	125
ULTRA FR I-JOIST HEADER	16020	19"x 16"	125

\* 25 Pc/pkg for the contractor

## THERMO CONNECTORS

### THERMO-PAN PANEL CONNECTORS

THERMO-CONNECTORS™ are molded polypropylene strips which easily connect THERMO-PAN™ panels.



PRODUCT	ORDER #	SIZE	PC/BOX
PANNING CONNECTORS	16348	16"	500
PANNING CONNECTORS	19348	19.5"	250
PANNING CONNECTORS	22348	22"	250
PANNING CONNECTORS	24348	24"	250
PANNING CONNECTORS	32336	32"	250

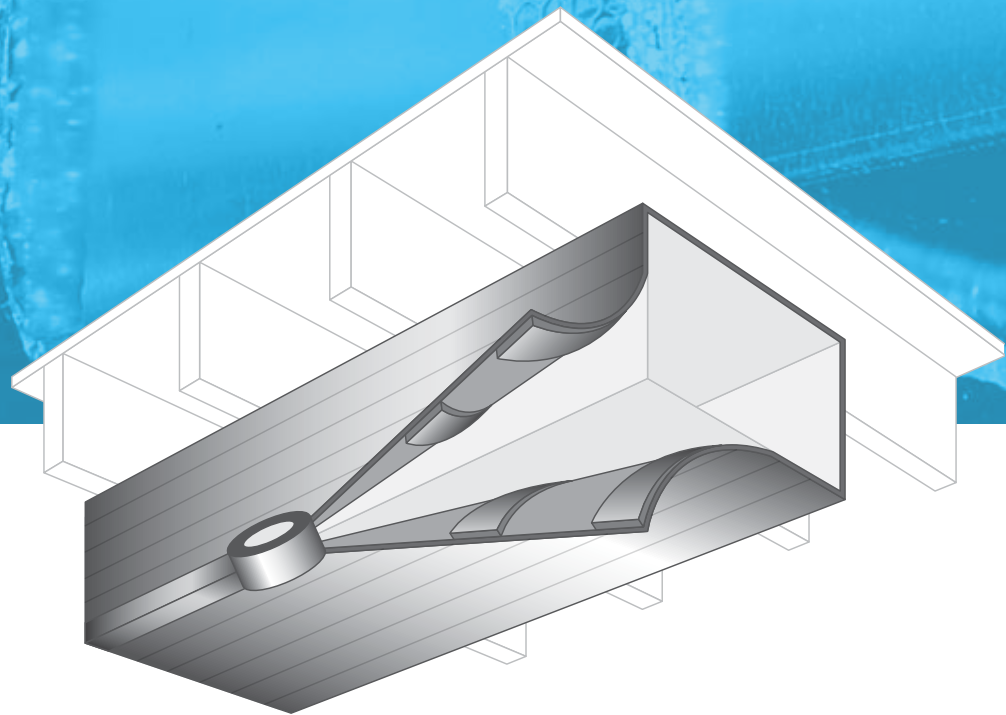


# THERMO REFLECT

PAT. PEND.



The Next Generation of Reflective Insulation



## Duct Insulation

THERMO-REFLECT has an inspector-friendly code certification strip on the product which identifies brand name and testing information... which means no hassles at the job site.

### DUCT INSULATION

- 97% reflectivity
- Easy to install - Fiber free and environmentally friendly
- Impervious to mold, insects, and rodents
- Helps reduce heat loss through your duct surfaces
- Raises your cooling and heating efficiency
- Helps ensure better climate control and comfort
- R-6 with air-space, R-4.3 without air-space
- ASTM E84-Class 1/Class A fire rating approved
- ASTM C411-Passed

ITEM #	DESCRIPTION	SIZE	SQ. FT.
T12290-24-050	Reflective-Double Bubble-Reflective	24"x 50'	100
T12290-36-050	Reflective-Double Bubble-Reflective	36"x 50'	150
T12290-48-050	Reflective-Double Bubble-Reflective	48"x 50'	200
T12290-48-100	Reflective-Double Bubble-Reflective	48"x 100'	400
T12290-48-125	Reflective-Double Bubble-Reflective	48"x 125'	500
T12290-60-100	Reflective-Double Bubble-Reflective	60"x 100'	500
T12290-60-125	Reflective-Double Bubble-Reflective	60"x 125'	625

### REFLECTIVE BUBBLE DUCT INSULATION

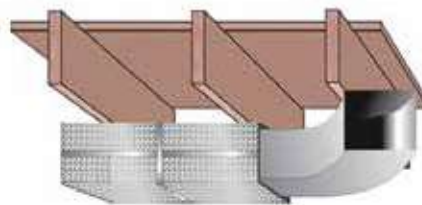


- Meets R6 insulation code requirements
- Minimal space requirements
- Inhibits condensation, mold and fungi growth
- Approved vapor barrier protection
- Quick, safe & easy to install
- **Class 1 Class A Fire Rating - ASTM E84-09**



**R-8 with Air-Space R-6 without Air-Space**  
Reflective duct insulation products make duct systems more energy efficient by 10 - 30%. This increases the overall comfort of a residence and results in significant savings to the homeowner.

- Meets Class 1 / Class A fire rating approval
- Minimal space requirements
- Inhibits condensation, mold and fungi growth
- Approved vapor barrier protection
- Quick, safe & easy to install
- **Flame Spread 10 / Smoke index 10**
- **Performance tested-UL723 Test standard**



ITEM #	DESCRIPTION	SIZE	SQ. FT.
T12260-48-075	Reflective Bubble / Spacer	48"x 75'	300

**When Building Codes Require an R-6 Duct Insulation**  
(Spacer strips pre-attached to material)

When installed correctly these Thermo Reflect products can add a **R-6** to the insulation value of a duct system. With the recent concerns about fiberglass, now is the ideal time for many contractors to make the switch to **BIG 6** and other Reflect Products.

ITEM #	DESCRIPTION	SIZE	SQ. FT.
2280-48-050	Foil-Bubble-Foil / Spacer	48"x 50'	200
2280-48-075	Foil-Bubble-Foil / Spacer	48"x 75'	300

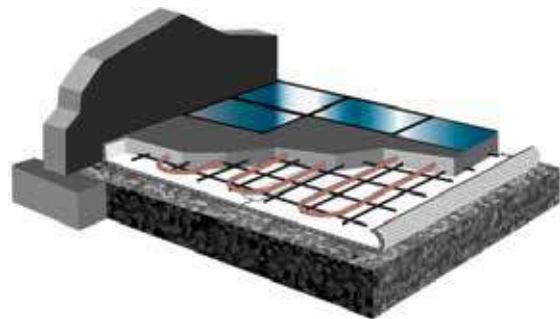
**When Building Codes Require an R-8 Duct Insulation**  
When installed correctly these Thermo Reflect products can add a **R-8** to the insulation value of a duct system. With the recent concerns about fiberglass, now is the ideal time for many contractors to make the switch to **BIG 8** and other Reflect Products.





# THERMO REFLECT

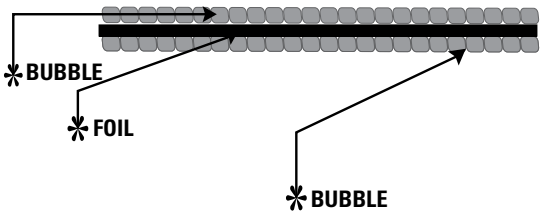
PAT. PEND.



## ULTRA CONCRETE BARRIER FOIL (CBF)

Ultra CONCRETE BARRIER FOIL™ (CBF) is a layer of pure aluminum foil sealed on both sides by industrial-strength polyethylene bubbles. This patented design protects the aluminum from lime in curing concrete, which deteriorates foil on contact.

Can be easily installed over rough grade while significantly reducing slab heat loss.



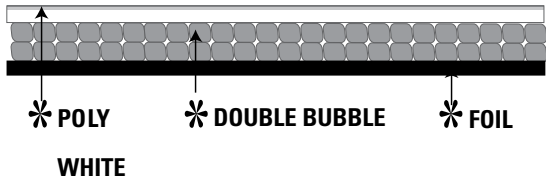
ITEM #	DESCRIPTION	SIZE	SQ. FT.
T11620-16-125	Bubble-Foil-Bubble	16"x 125'	167
T11620-48-125	Bubble-Foil-Bubble	48"x 125'	500



## ULTRA POLY BARRIER

Poly Barrier is a double layer of polyethylene bubbles bonded to a layer of 99% pure aluminum foil on one side and a layer of white polyethylene on the other side. Both Ultra and Standard grade products are approved vapor barriers. The Ultra grade offers a superior product thickness of 10 mil (versus 7 mil). Both Poly Barriers improve slab heat loss efficiency by 50%, directing heat up toward the living space.

ITEM #	DESCRIPTION	SIZE	SQ. FT.
T11320-48-125	Ultra Foil-Double Bubble-Poly	48"x 125'	500
T14320-48-125	Foil-Double Bubble-Poly	48"x 125'	500



## Radiant Heating and Barrier Insulation for In-Home Use.

Relective Duct Insulation

## NT RADIANT BARRIER FOR ATTICS

THERMO REFLECT ATTIC NT - reflects 97% of radiant heat transfer, protects the installed R-Value of attic insulation by controlling moisture and adds an additional R-5.4 to existing insulation. REDUCES ENERGY CONSUMPTION - because THERMO REFLECT ATTIC NT is made of highly reflective metallized aluminum, it creates a low-emissivity (low-e) surface to help reduce heat gain in the summer and heat loss in the winter.

CHANNELS MOISTURE VAPOR AND ALLOWS FOR BREATHABILITY - when vapor enters the attic from the living space, THERMO REFLECT ATTIC NT helps diffuse the vapor through its breathable membrane.

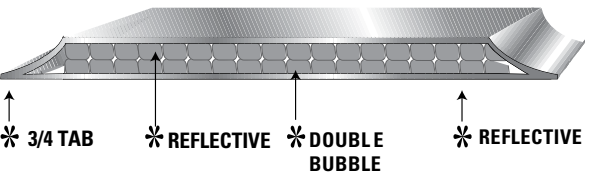


ITEM #	DESCRIPTION	SIZE	SQ. FT.
T14800-48-125S	Reflective-No-Tear Solid	48"x 125'	500
T14800-48-125P	Reflective-No-Tear Perforated	48"x 125'	500

## BETWEEN JOIST INSULATION



When tubing is attached to the underside of the sub-floor, this is known as a below-deck or joist-space dry system. These systems don't affect floor height nor do they disrupt existing floor coverings, making them ideal for retrofit projects.



ITEM #	DESCRIPTION	SIZE	SQ. FT.
T12222-12-125	Reflective-Double Bubble-Reflective	12"x 125'	125
T12222-16-125	Reflective-Double Bubble-Reflective	16"x 125'	167
T12222-18-125	Reflective-Double Bubble-Reflective	18"x 125'	187.5
T12222-24-125	Reflective-Double Bubble-Reflective	24"x 125'	250
T12222-16-075	Reflective-Double Bubble-Reflective	16"x 75'	100
T12222-24-075	Reflective-Double Bubble-Reflective	24"x 75'	150



# THERMOSEALANT



## Professional Sealants



## Professional Sealant Solutions



### RTV SILICONE SEALANT

Thermo's RTV Silicone Sealant is a one component, permanently flexible, RTV (Room Temperature Vulcanizing) mildew resistant silicone sealant that is the industry standard. The products tough chemical resistance makes it a worry-free solution for a wide range of applications. It provides excellent adhesion to sheet metal, aluminum, vinyl, glass, tile and cultured marble without the need for a primer. The product is engineered to cure rapidly when exposed to atmospheric moisture, to form a durable tight bond that contractors and installers count on.

#### Features...

- Weather Resistant
- Excellent Adhesion
- Permanently Flexible
- Easy to Gun, Easy to Tool
- Non-Sag & Slump
- Non Paintable

#### Applications...

- HVAC
- General Construction
- Kitchen & Bath
- Transportation
- Industrial

PRODUCT	ORDER #	COLOR	TUBES/CASE
THERMO RTV SILICONE	15000	CLEAR	12
THERMO RTV SILICONE	15001	WHITE	12
THERMO RTV SILICONE	15002	BLACK	12
THERMO RTV SILICONE	15004	ALUMINUM	12
THERMO RTV SILICONE	15005	ALMOND	12
THERMO RTV SILICONE	15010	TRANSLUCENT	12
THERMO RTV SILICONE	15012	GREY	12

### HIGH-TEMP RTV SILICONE SEALANT

Thermo's High-Temp RTV Silicone Sealant is a one part, easy-to-use, non-slumping paste that cures to a silicone rubber when exposed to atmospheric moisture at room temperature. This product is engineered to provide a durable, watertight bond when exposed to temperatures ranging from -80° to 500°F on a continuous basis – while maintaining its integrity at up to 600°F for intermittent time periods. Its unique formulation acts as both a thermal and electrical insulator as well, so it is ideal for sealing around heating elements.

#### Features...

- Approved in High Temperature Areas
- Non-Sag Red Formula
- Insulates Electrically
- Up to 600° F
- Insulates Thermally
- Non Paintable

#### Applications...

- HVAC
- Fireplaces
- Furnace Vent Pipes
- Sealing Around Heating Elements
- Industrial Ovens
- Smoke Stacks
- Engine Parts

PRODUCT	ORDER #	COLOR	TUBES/CASE
HIGH TEMP RTV SILICONE	60003	RED	12



### NSF SILICONE SEALANT

Thermo NSF Silicone is a 100% acetoxy-based, high-performance silicone engineered for applications that require a 100% silicone solution. The product is formulated as a one component, mildew-resistant sealant that is permanently flexible and offers excellent adhesion.

Thermo NSF Silicone's anti-microbial formula is NSF approved and FDA compliant, so it can be used confidently around food applications. Its resistance to moisture makes it ideal for use in high moisture areas such as marine, baths, and walk-in coolers.

#### Features...

- Consistent Gunability & Tooling
- Approved for Cultured Marble
- Anti-Microbial Formula
- FDA/USDA Compliant
- Excellent Adhesion
- Non-Paintable

PRODUCT	ORDER #	COLOR	TUBES/CASE
THERMO NFS SILICONE	25000	CLEAR	12
THERMO NFS SILICONE	25001	WHITE	12
THERMO NFS SILICONE	25004	ALUMINUM	12



# THERMOSEALANT

## THERMOMAXBOND HS

A high strength advanced polymer sealant that can be applied underwater. The product's unique formula offers excellent adhesion to a wide range of industrial materials, including vinyl, sheet metal, pre-painted metals, wood, glass, aluminum, and plastic. It provides a highly weatherable, paintable surface that allows for a reduction in the number of fasteners required. ThermoMaxBond HS has been engineered for a wide range of uses and applications. The product's fast-curing formula contains no solvents, and very low VOCs, so the product is environmentally friendly.



PRODUCT	ORDER #	COLOR	TUBES/CASE
THERMOMAXBOND	95101	WHITE	12

## NUCO SILICONE FIRE STOP AND DRAFT STOP

### FIRE STOP

- Intumescent means that it swells when heated to a certain temperature
- GG-266 has passed the new aging tests required for intumescent firestops that are mandatory as of May 2006 under UL1479
- Wouldn't you rather use a product that can handle this aging
- GG-266 will fill 3 penetrations as opposed to 1 collar per penetration
- Caulk & Walk = no additional work required

### DRAFT STOP

NuFlex 136 has been tested and meets the American Society for Testing Materials ASTM E-136

- Red in color
- Excellent adhesion to wood substrates
- Will not become brittle or breakdown over time

PRODUCT	ORDER #	COLOR	TUBES/CASE
GG266 INTUMESCENT FIRESTOP	81430	RED	12
NUFLEX 136 DRAFT STOP	81136	ORANGE/RED	12

## TWIST NOZZLE AND RIKA NOZZLE

RIKA SWIVEL 360° NOZZLES FOR SILICONE CARTRIDGE TUBE with cap.

The fantastic patented swivel nozzle is great for all those hard to get to places. Can be a real time saver. Will fit all standard silicone / caulk cartridges.



PRODUCT	ORDER #	COLOR	ITEMS/CASE
TWIST NOZZLE W/CAP	95112	WHITE	12
TWIST NOZZLE W/CAP	95148	WHITE	48
RIKA NOZZLE 360°	36012	WHITE/RED CAP	12
RIKA NOZZLE 360°	36048	WHITE/RED CAP	48

# THERMOFOAM

## One Component Polyurethane Foam Sealants

## FIREBLOCK FOAM SEALANT

### MULTIPURPOSE LOW PRESSURE ONE-COMPONENT FIREBLOCK POLYURETHANE FOAM SEALANT

Thermofoam Fireblock Sealant is a low pressure, one-component, polyurethane foam sealant specifically designed and colored orange to seal annular spaces around ducts, plumbing penetrations, cables, and other penetrations between rooms and floors. A critical advantage of Thermofoam Fireblock Sealant is its ease of use and its effectiveness at blocking smoke and toxic gases. The foam sealant stops air infiltration by blocking air from entering/escaping through gaps which prevent the flames, smoke, and gases from spreading. The product is for use in Type V residential construction. Fireblock Sealants are not intended for use in hourly-rated assemblies.

#### Product Uses...

- Sealing Duct Penetrations
- Sealing Plumbing Penetrations
- Type V Residential Fire Blocking
- Sealing Electrical Outlets
- Sealing Electrical Openings
- Sealing Through Stud Penetrations
- Sealing Baseplates
- Sealing Insulation Board Joints

PRODUCT	ORDER #	DESCRIPTION	TUBES/CASE
THERMOFOAM	30033	12 oz. Fireblock Straw Foam	12
THERMOFOAM	30192	24 oz. Fireblock Straw Foam	12
THERMOFOAM	30181	24 oz. Fireblock Gun Foam	12

## LOW PRESSURE POLYURETHANE FOAM SEALANT

Thermofoam is a low pressure, one-component polyurethane foam sealant that is a moisture-cured, multipurpose sealant designed to seal and fill small cracks and voids, creating a tight barrier against noise, moisture and air infiltration. Compared to standard cartridge type sealants, Thermofoam polyurethane foam sealants have excellent adhesion and expansion characteristics ensuring a complete and permanent air tight seal. Polyurethane foam sealants result in less waste on small jobs while having an economic impact on large jobs.

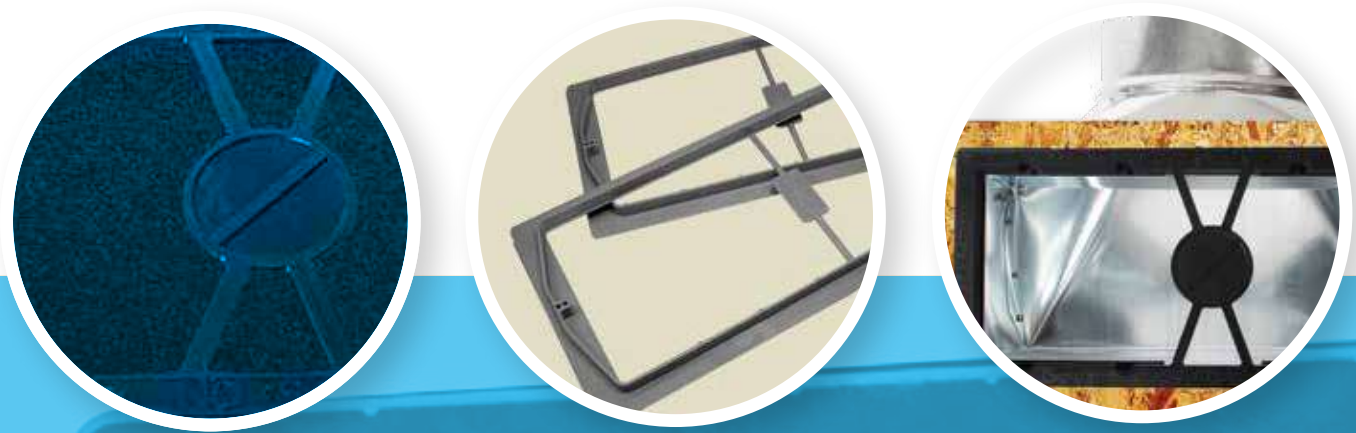
#### Product Uses...

- Sealing around HVAC Vents and Pipes
- Sealing Through-the-Wall Penetrations
- Sealing Insulation Board Joints
- Sealing Electrical Outlets
- Sealing Electrical Openings
- Sealing Plumbing Penetrations
- Sealing Through Stud Penetrations
- Sealing Baseplates
- Sealing Can Lights
- Air Sealing Attic

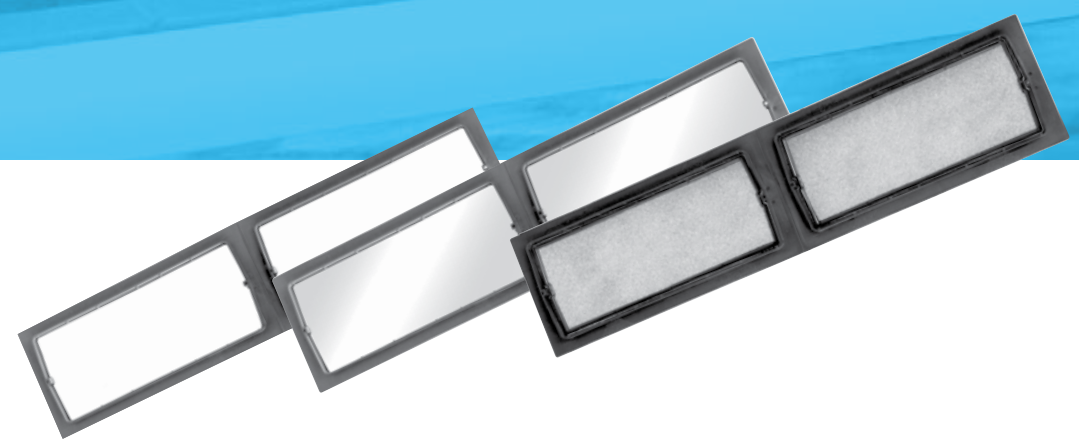
PRODUCT	ORDER #	DESCRIPTION	TUBES/CASE
THERMOFOAM	30002	12 oz. Standard Straw Foam	12
THERMOFOAM	30107	24 oz. Standard Straw Foam	12
THERMOFOAM	30115	24 oz. Standard Gun Foam	12







**Return Air Grille Wall & Floor Frames**



**THERMO-HVAC**

7 Custom Sizes of Precision Molded Frames  
3 Custom Styles to Suit Your Needs



**RETURN AIR GRILLE WALL FRAMES**



**STANDARD**  
Allows Unfiltered Air Flow

Order#	Size	PC/Box
STANDARD MAKES		
14610	12x6 (2) or 30x6 (1)	50
14620	24x6	50
14630	30x6 or 14x6 (2)	50
14830	30x8 or 14x8 (2)	50
HART & COOLEY		
24610	12x6 (2) or 30x6 (1)	50
24620	24x6	50
24630	30x6 or 14x6 (2)	50



**WINDOWED**  
Clear Film Allows No Dirt Or Air

Order#	Size	PC/Box
STANDARD MAKES		
14611	12x6 (2) or 30x6 (1)	50
14621	24x6	50
14631	30x6 or 14x6 (2)	50
14831	30x8 or 14x8 (2)	50
HART & COOLEY		
24611	12x6 (2) or 30x6 (1)	50
24621	24x6	50
24631	30x6 or 14x6 (2)	50



**FILTERED**  
Allows Clean Air Flow

Order#	Size	PC/Box
STANDARD MAKES		
14612	12x6 (2) or 30x6 (1)	50
14622	24x6	50
14632	30x6 or 14x6 (2)	50
14832	30x8 or 14x8 (2)	50
HART & COOLEY		
24612	12x6 (2) or 30x6 (1)	50
24622	24x6	50
24632	30x6 or 14x6 (2)	50

**SUPPLY AIR REGISTER FLOOR FRAMES**



**WINDOWED**  
Clear Film Allows No Dirt Or Air

Order#	Size	PC/Box
21002	2.25x10	50
21202	2.25x12	50
21402	2.25x14	50
41002	4x10	50
41202	4x12	50
41402	4x14	50



**FILTERED**  
Allows Clean Air Flow

Order#	Size	PC/Box
21003	2.25x10	50
21203	2.25x12	50
21403	2.25x14	50
41003	4x10	50
41203	4x12	50
41403	4x14	50



**WINDOWED & FILTERED**

Order#	Size	PC/Box
21004	2.25x10	50
21204	2.25x12	50
21404	2.25x14	50
41004	4x10	50
41204	4x12	50
41404	4x14	50



**STANDARD**

Order#	Size	PC/Box
21001	2.25x10	50
21201	2.25x12	50
21401	2.25x14	50
41001	4x10	50
41201	4x12	50
41401	4x14	50



All sizes are in inches.

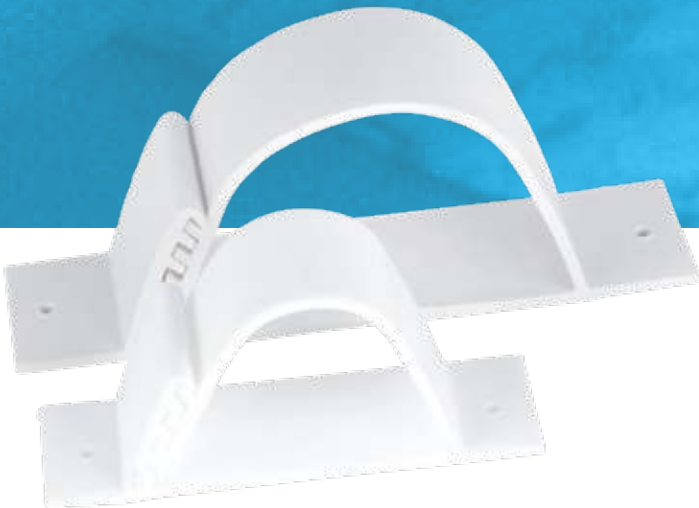
**Features...**

- Add quality, safety and professionalism to your job
- Keeps dirt out of system and basement
- Saves labor costs
- “No Step” safety marked
- Easy to seal duct to floor and system
- Makes installation a snap
- Installation instructions on all bags
- Fits all standard boots
- Precision molded black polypropylene





EZ Installation Supports



## UNIVERSAL MOUNTING BRACKETS

Made from Recycled Products  
Available in both black and white colors

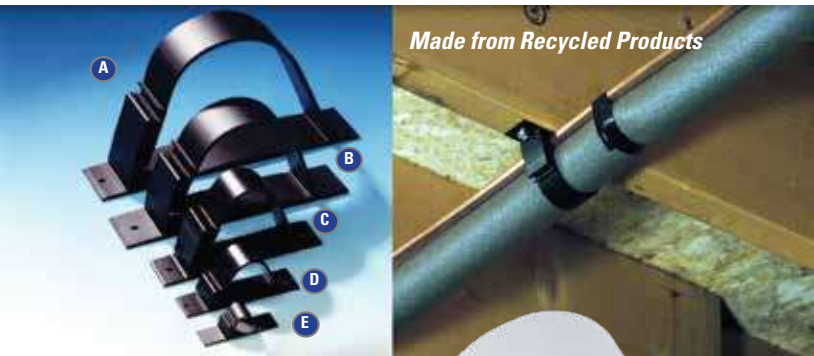
### SNAP-CLAMP

Give the quality, professional look to your job with just half the labor!

THERMO-SNAP CLAMPS™ are the low-cost solution to all your pipe mounting jobs. Pre-mounted brackets provide an easy one-man installation job that is literally a snap!

Multi-use adjustable Snap Clamp:

- A Industrial
- B Commercial
- C Residential
- D Mini
- E Micro



PRODUCT	ORDER #	SIZE	PC/BOX
SNAP CLAMPS	41050	Micro: 7/16" OD	1000
SNAP CLAMPS	41075	Mini: 1" OD	1000
SNAP CLAMPS	41118	Residential: 1 1/2" OD	500
SNAP CLAMPS	41125	Commercial: 2" OD	250
SNAP CLAMPS	41150	Industrial: 3" OD	250
SNAP CLAMPS (White)	51118	Residential: 1 1/2" OD	500
SNAP CLAMPS (White)	51125	Commercial: 2" OD	250

- Multi-use applications including copper, PVC and ABS pipes
- Five heavy-duty sizes
- UV protected
- Maintenance Free - use indoors or out
- Eliminates vibrations and noise call backs
- Easy to re-open for an addition or custom adjustment

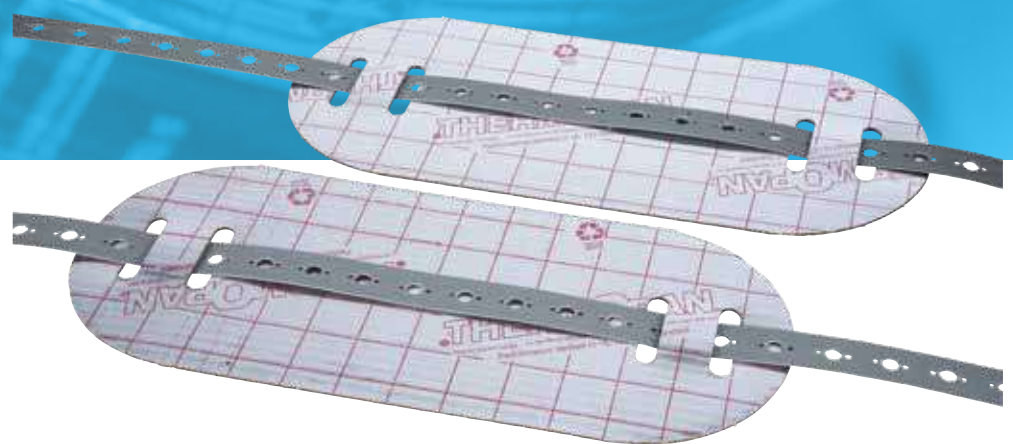




# THERMO-SADDLES™



Hang Round Insulated Flex Duct in Open Ceilings



## UNIVERSAL MOUNTING BRACKETS

Eliminates pinching and compression of insulation  
Greater R-value and increased airflow

## THERMO-SADDLES

### HANG ROUND FLEX DUCT IN OPEN CEILINGS

Thermo-Saddles eliminate pinching and compression of insulation, providing greater R-value and increased airflow.

- One size fits all
- Use individually or link together
- Saddle strap may also be nailed or screwed to joists if duct installation runs under floor

PRODUCT	ORDER #	SIZE	PC/BOX
FLEX DUCT SADDLE	10101	6" to 14"	250



# BUTTON-LOK™ PATENTED

## BUTTON-LOK

### WORLD'S BEST HANGER STRAP

PRODUCT	ORDER #	SIZE	PC/BOX
BUTTON-LOK	10100	1"x 100'	25
BUTTON-LOK	10125	1"x 25'	20
BUTTON-LOK	10200	2"x 100'	10







*EZ Snap Grilles for Return Air Frames*



**FOR RETURN AIR FRAMES**

No Tools or Screws Required  
Simply Snap Into Place!

**SNAP-GRILLES**

These sturdy precision-molded white ABS grilles are designed for use with standard 1/2" or 5/8" drywall. They snap-fit perfectly into our Thermo-Frames™ – whether used as a single (14"x6") or as a double (30"x6") placed side-by-side.

- Competitively priced
- Just depress tabs for easy removal and cleaning
- Dishwasher safe
- Save time, labor and money
- Paint to match any decor
- No rusting, no chipped metal to touch up
- Pre-marked for screws if used with other brand frames

**STANDARD**

Allows Unfiltered Air Flow

Product	Order#	Size	PC/Box
SNAP GRILLE	15146	15 7/8"x 7 7/8"	40
FRAME	14630	30"x 6" (or 2-14"x6")	50



REVERSE SIDE

SNAP  
LOCK PIN



# THERMO-THIMBLE



Through-The-Wall Line Set Kits



## The Professional Way To Run Your A/C Line Set & Wire Projects

New and existing retrofit kits  
Available in both round and rectangular

### THIMBLE KITS

The professional way to run your A/C line set & wire projects.

**ThermoThimble is innovative...**

- Stops line set snagging
- Creates a permanent, air-tight seal through walls
- High-density foam gaskets keep out air, insects & other pests
- No ugly holes to patch

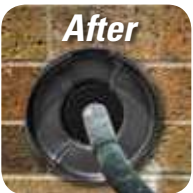
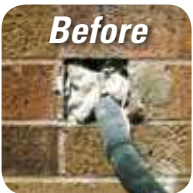
**ThermoThimble is easy to install...**

- Installs easily on siding or masonry walls
- Saves labor costs
- Unit offers custom, professional look
- For new construction or retrofit
- Residential & Commercial

PRODUCT	ORDER #	SIZE	PC/BOX
THIMBLE KIT (Round)	44002	2 7/8" Dia. up to 12" Wall	20
THIMBLE KIT (Round)	44005	4 7/8" Dia. up to 12" Wall	16
THIMBLE KIT (Rectangular)	44008	2 1/4"x 3 1/8" up to 12" Wall	20



Available  
in **ROUND** and  
**RECTANGULAR**  
Styles.



## THERMO RETROFIT-THIMBLE

PRODUCT	ORDER #	SIZE	PC/BOX
RETROFIT-THIMBLE KIT (RD)	44003	2 7/8" Dia. O.D. x 7" Lg.	20
RETROFIT-THIMBLE KIT (RD)	44006	4 7/8" Dia. O.D. x 7" Lg.	16
RETROFIT-THIMBLE KIT (REC)	44009	2 1/4"x 3 1/8" O.D. x 7" Lg.	20



# THERMOTAPE

## Adhesive Tapes



## Quality Tapes

Metalized Poly Tape, White Poly Tape and All-Purpose Duct Tape

## ADHESIVE TAPES

### Premium Metalized BOPP Splicing and Repair Tape

Acrylic pressure-sensitive adhesive combined with conformability of biaxially-oriented polypropylene (BOPP) film provides superior sealing, protection benefits and ease of handling. HVAC (Heating, Ventilation and Air Conditioning) applications, reflective insulation, seaming & splicing.

### UL181 Foil Tape

Uses include general purpose seaming, patching and sealing of rigid fiber air duct and connector closure systems to enhance appearance and maintain vapor barrier integrity.

### ALL Purpose Duct Tape

Uses include HVAC ducts and pipes, packaging, wrapping and sealing, binding and bundling, exterminators, book repair, weather proofing, and general maintenance.



PRODUCT	ORDER #	SIZE	COLOR	ROLLS/BOX
ACRYLIC BASED ADHESIVE	16448	2"x 164'	WHITE	36
ACRYLIC BASED ADHESIVE	16472	3"x 164'	WHITE	24
ACRYLIC BASED ADHESIVE	17948	2"x 179'	METALIZED FOIL	36
ACRYLIC BASED ADHESIVE	17972	3"x 179'	METALIZED FOIL	24
UL181	25181	2.5"x 180'	ALUMINUM FOIL	16
STANDARD DUCT TAPE	17920	2"x 179'	GREY	24



# THERMOLEVELERS



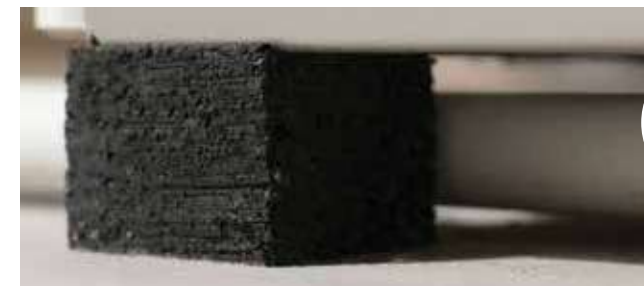
*EZ Installation Better-Than-Bricks Levelers*



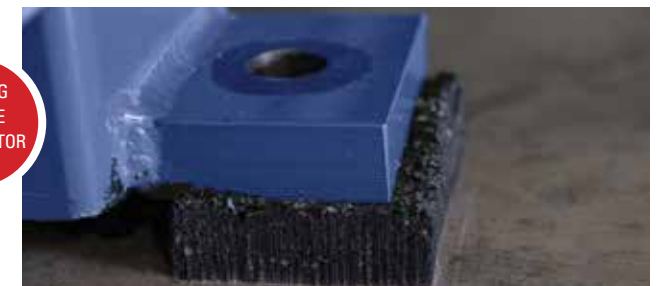
## Better Than Bricks!

Levels furnaces, electric heaters, air conditioners or any other types of home or industrial equipment

## THERMO-LEVELERS



4 PC/PKG  
FOR THE  
CONTRACTOR



### VIBRATION BLOCKS ORDER #17662

- Perfect for commercial or industrial use
- Sawable for a smaller footprint
- Water & insect resistant
- Takes vibration & noise out of equipment
- Will not conduct cold
- Made from recycled materials
- 25,000 pound crushing strength

### VIBRATION PADS ORDER #19525

- Perfect for residential, commercial and industrial use.
- Shim furnaces and condenser units... vibration-free!
- Made from pure polymer. Softer than THERMO-TWIST™ LEVELER BLOCKS

### TWIST BLOCKS ORDER #17525

- THERMO-TWIST™ leveler blocks twist to three different heights to level furnaces, electric heaters, and air conditioners quickly and easily
- Lightweight - better than bricks. Tested crushing strength - 5,000 lbs. per block. Water, weather and insect proof. Won't chip, crack, split or rot



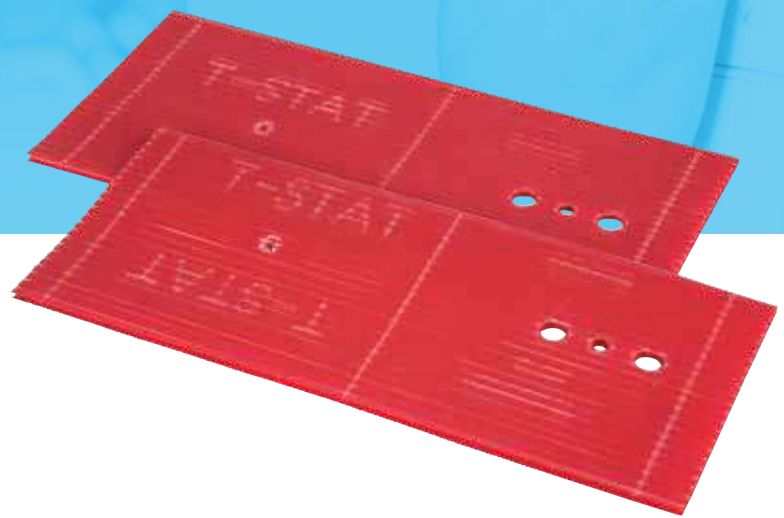
PRODUCT	ORDER #	SIZE	ROLLS/BOX	LBS
LEVELER BLOCKS	17525	1-3/4" x 2" X 2-1/4"	25 PKS/BOX	20,000 lbs./Pack
VIBRATION BLOCKS	17662	6" x 6" x 2"	12 Blocks/BOX	25,000 lbs/Block
VIBRATION PADS	19525	3/4" x 3" x 3"	25 PKS/BOX	5000 lbs./Pack



# THERMOSTAT-RUFF PLATE



Professional Thermostat Mounting



## Finally, a solution to mounting thermostat wires!

Eliminates inaccurate temperature readings  
Provides an airtight seal around wires

### THERMOSTAT-RUFF PLATE

Finally, there's a solution to mounting those unprofessional looking thermostat wires. The ThermoStat-Ruff Plate™ eliminates inaccurate temperature readings and provides an airtight seal around the wires for accurate temperature control. It also provides space for the contractor's logo or business card.

Features...

- 6"x 6" size fits most all makes & models of thermostats
- Residential and commercial application
- For wood or metal studs
- Provides solid support for sub-base screws
- Keeps wire in middle of stud
- Easy right-or left-hand stud mounting



PRODUCT	ORDER #	SIZE	PC/BOX
T-STAT RUFF PLATE	56000	6"x 6"	100

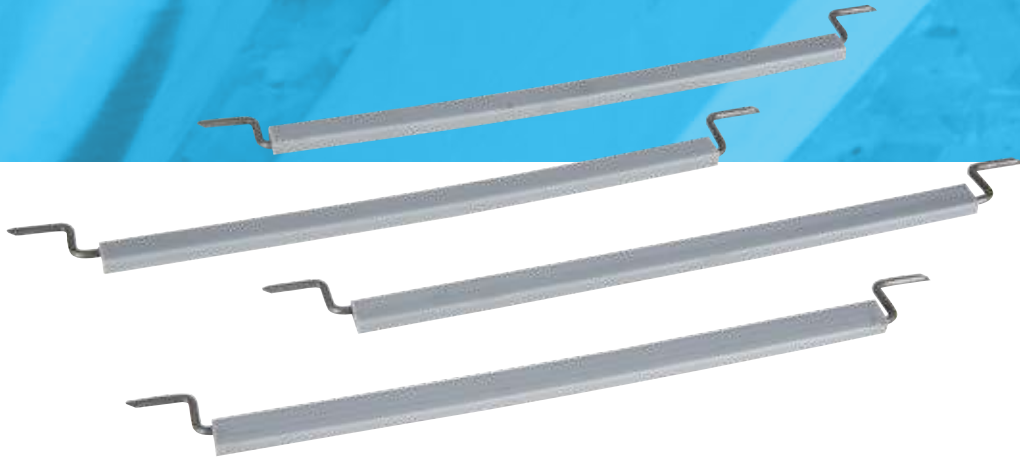


# THERMO-BRACKETS

PATENTED



Quality Pipe Hanger Brackets



## More Products to Save Time and Money

The first and only 2-way adjustable bracket

### THERMO-BRACKETS

#### OUR MOST POPULAR PIPE HANGER

- Adjusts both horizontally and vertically to meet your needs
- PVC bracket body prevents heat and noise transfer from ducts
- No nails, comes ready to use

PRODUCT	ORDER #	SIZE	PC/BOX
THERMO BRACKET	01600	14.25"	250
THERMO BRACKET (Bulk)	01601	14.25"	250

25 PC/PKG  
FOR THE  
CONTRACTOR







# **THERMO**<sup>TM</sup>

*The Original Manufacturer of Thermopan*

## **THERMO MANUFACTURING INC.**

Canton, OH 44705

U.S. & Canada Phone Toll Free: (888) 678-3709

U.S. & Canada Fax Toll Free: (888) 678-8711

**[www.THERMOPAN.com](http://www.THERMOPAN.com)**