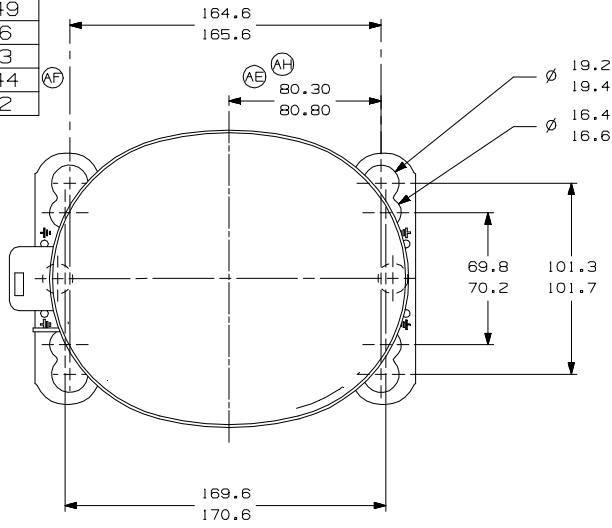
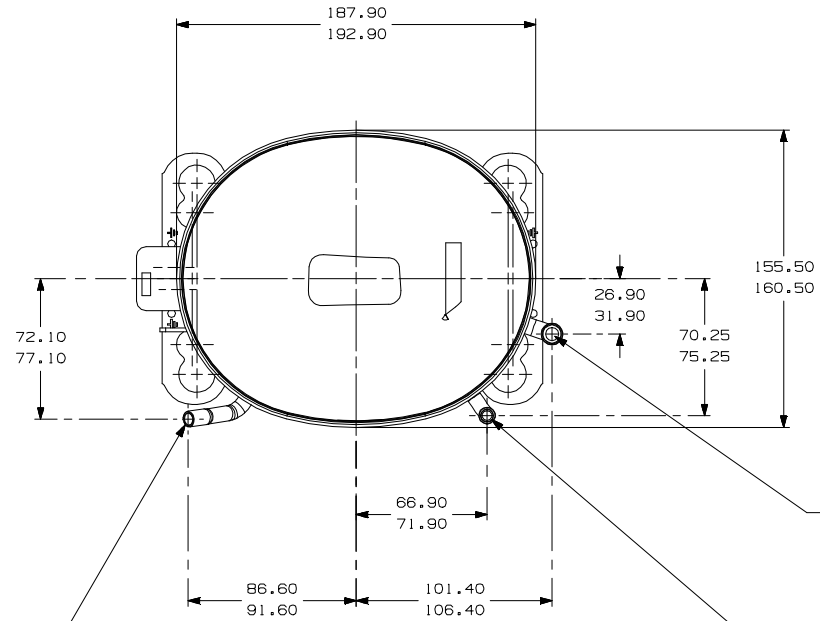


ITEM	PART NUMBER
A	320-10149
B	14963286
C	14963573
D	580-10244
E	14963572



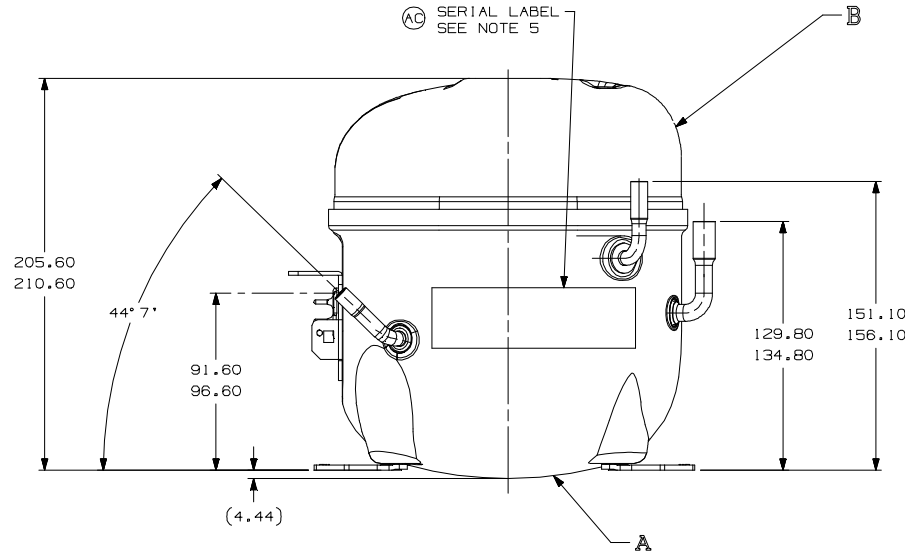
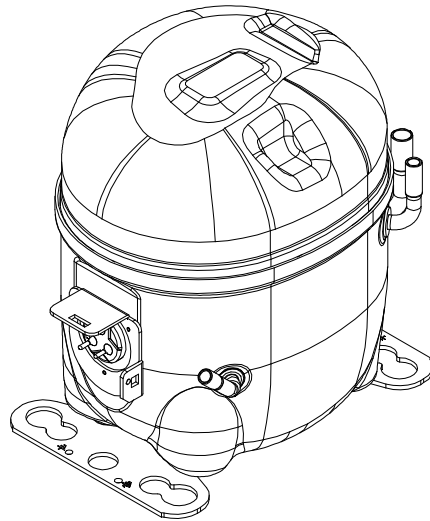
- AUXILIARY VIEW -
FASTENING DIMENSIONS



C - (COPPER) PROCESS TUBE
GAGE I.D. TO 6.45-6.55
x 15.00-17.00 DEEP.

E - (COPPER) SUCTION TUBE
GAGE I.D. TO 9.60-9.70
x 15.00-17.00 DEEP.

D - (COPPER) DISCHARGE TUBE
GAGE I.D. TO 6.45-6.55
x 15.00-17.00 DEEP.



- NOTES:
- 1- IF SPECIFIED IN BM. ASSEMBLE PARTS AS SHOWN.
 - 2- SEE SPEC. "A-B" & A-C FOR PROCESS.
 - 3- THERE CAN BE NO CREASES IN THE TUBES. (CREASES ARE SIGNS OR MARKS THAT ARE IN SOMETHING THAT BENDS)
 - 4- AFTER THE FOLDS IN THE TUBES, CANNOT BE ACCELERATED TO AREA EXCEEDING 30%.
 - 5- THE SERIAL LABEL SHOULD BE ON THE SIDE OPPOSITE THAT SHOWN ABOVE, ONLY FOR MODEL AE104BBR.
 - 6- TUBES OF SUCTION, DISCHARGE AND PROCESS MUST BE FREE OF INK ON 15.8mm (5/8") FROM TOP OF THE TUBES AS SPEC. T.P.Co. A-B4.
 - 7- FOR SUPPLIER ENVIRONMENTAL REGULATORY REQUIREMENTS, SEE TECUMSEH GLOBAL SPEC. 08.

ITEM	DESCRIPTION	DATE	BY	REASON
EC00775	ALTERA MEDIDA ERA: 82.30-82.80 E. ACRESC. NOTA 7	14-02-18	MB	
EC70368	REFINADO DETALHE UREVA (SENTE) DE PINTURA	06-06-18	MC	
EC50607	ALTERADO TUBO D	03-03-15	MB	
EC40180	ALTERADA MEDIDA ERA: 80.30-80.80	31-01-14	MB	
EC52840	ADICIONADO NOTA	13-09-13	MB	
EC48613	ACRESCENTADA ETIQUETA SERIAL	30/11/13	MB	
EC44035	REVISADA NOTAS 3 E 4	20/06/12	A.M	
EC41051	LIBERACAO	29/12/11	J.B / A.M	

THIRD ANGLE PROJECTION	UNITS: mm
	DRAWING SIZE: A2



Tecumseh

SALES COMPRESSOR			PART NO. DCAE214	
DWN. J. BARBAND	CK. A. MARTINEZ	APR. W. CORREA	SCALE 1:2	PAGE 1/1
DATE 29/08/11	REF.	FAMILY AE2		