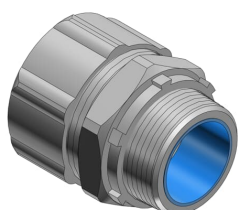


PRODUCT-DETAILS

5334-TB

1 IN INSUL. LIQ.TIGHT CONN STRAIGH



General Information

Extended Product Type	5334-TB
Product ID	7TAD012100R0010
EAN	5414363075653
Catalog Description	1 IN INSUL. LIQ.TIGHT CONN STRAIGH
Long Description	1 Inch Straight Steel Insulated Liquidtight Connector

Ordering

EAN	5414363075653
-----	---------------

Dimensions

Product Net Weight	.375 lb 170.068 g
--------------------	----------------------

Container Information

Package Level 1 Units	10 piece
Package Level 1 Width	5 in 127 mm
Package Level 1 Height	4 in 102 mm
Package Level 1 Depth /	6 in

Length	152 mm
Package Level 2 Units	50 piece
Package Level 2 Width	5.31 in 135 mm
Package Level 2 Height	6.31 in 160 mm
Package Level 2 Depth / Length	22.06 in 560 mm

Additional Information

Application	Used where flexible metal raceway is installed in outdoor or indoor locations where exposed to continuous or intermittent moisture.
Brand / Label	T&B Liquidtight Fittings
Material	Steel
Number of Batteries	0
Product Name	INSULATED FITTING FOR CONDUIT
Product Type	Connectors-Straight
Size	1 Inch
Standards	UL E23018, CSA
Surface Finishing	Electro Zinc Plated/Chromate Coating
UPC	786210053349

Certificates and Declarations (Document Number)

Data Sheet, Technical Information	TDS000122
Declaration of Conformity - CE	9AKK107492A9884
Instructions and Manuals	5334-TB

Classifications

ETIM 6	EC001180 - Screw connection for protective metallic hose
ETIM 7	EC001180 - Screw connection for protective metallic hose
UNSPSC	39121420
WEEE Category	Product Not in WEEE Scope
IDEA Granular Category Code (IGCC)	4585 >> Liquid tight connectors

Categories

Low Voltage Products and Systems → Installation Products → Cable Protection, Explosion Proof and Lighting → Liquidtight Fittings

