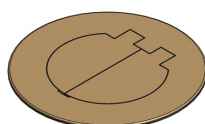


PRODUCT-DETAILS

E97BR2D

DUAL SERVICE BRASS FLOOR BOX COVER



General Information

Extended Product Type	E97BR2D
Product ID	7TAA003630R0002
EAN	0034481178712
Catalog Description	DUAL SERVICE BRASS FLOOR BOX COVER
Long Description	Two Door Cover for Dual Service Round Floor Box, Brass, For use with Duplex Devices and Two Data Ports, Divider Kit Included

Ordering

EAN	0034481178712
UPC	034481178712
Country of Origin	Taiwan, Province Of China (TW)
Customs Tariff Number	7419995050
Selling Unit of Measure	each

Container Information

Package Level 1 Units	5 piece
Package Level 1 Width	6.25 in 159 mm
Package Level 1 Height	6.25 in 159 mm
Package Level 1 Depth / Length	18 in 457 mm

Package Level 2 Units

280 piece

Additional Information

Application	For tile and carpet applications
Brand / Label	Steel City
Color	Brass
Effective Date	20080116
Material	Brass
Number of Knockouts	0
Product Name	BRASS COVER FOR ELEC BOX
Product Type	Round Floor Boxes, Covers & Accessories
Special Functions	Screws concealed under doors.
Standards	UL E11461
Sub Brand / Label	Carlton

Certificates and Declarations (Document Number)

Data Sheet, Technical Information	E97BR2D
Instructions and Manuals	E97BR2D

Classifications

ETIM 6	EC001906 - Mounting cover for underfloor draw-in box
ETIM 7	EC001906 - Mounting cover for underfloor draw-in box
ETIM 8	EC001906 - Mounting cover for underfloor draw-in box
UNSPSC	39121307
WEEE Category	Product Not in WEEE Scope
IDEA Granular Category Code (IGCC)	4432 >> Floor boxes

Categories

Low Voltage Products and Systems → Installation Products → Wire Management and Connectivity → Electrical Boxes

