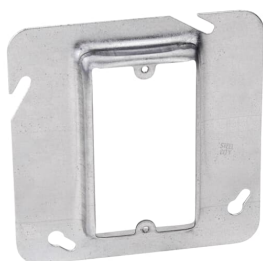


PRODUCT-DETAILS

# 72 C 14 5/8

## 4-11/16 SQUARE BX CVR,STL,4CU,RSD



### General Information

Extended Product Type	72 C 14 5/8
Product ID	7TAA001230R0016
EAN	0785991175585
Catalog Description	4-11/16 SQUARE BX CVR,STL,4CU,RSD
Long Description	Single Gang Device Cover, 4 Cubic Inches, 4-11/16 Inch x 5/8 Inch Raised, Pre-Galvanized Steel

### Ordering

EAN	0785991175585
-----	---------------

### Dimensions

Product Net Weight	.375 lb 170.068 g
--------------------	----------------------

### Container Information

Package Level 2 Units	25 piece
Package Level 2 Width	10 in 254 mm
Package Level 2 Height	4.25 in 108 mm

Package Level 2 Depth / Length	10.25 in 260 mm
--------------------------------	--------------------

### Additional Information

Brand / Label	Steel City
Color	Silver
Material	Steel
Number of Batteries	0
Number of Knockouts	0
Product Name	STEEL CITY BOXES AND ACCESS
Product Type	Outlet Box Covers
Shape	Square
Size	4-11/16 Inches
Standards	UL E2969
Surface Finishing	Pre-Galvanized
UPC	785991175585
Volume	4 in <sup>3</sup>

### Certificates and Declarations (Document Number)

Data Sheet, Technical Information	72 C 14 5/8
Instructions and Manuals	72 C 14 5/8

### Classifications

ETIM 6	EC002655 - Cover for box/housing for surface mounting on the wall/ceiling
ETIM 7	EC002655 - Cover for box/housing for surface mounting on the wall/ceiling
UNSPSC	39121304
WEEE Category	Product Not in WEEE Scope
IDEA Granular Category Code (IGCC)	4426 >> Cover for box/housing for built-in mounting in the wall/ceiling

### Categories

Low Voltage Products and Systems → Installation Products → Wire Management and Connectivity → Electrical Boxes

