



**SPEEDCLEAN®**



MODEL

**CJ-BKPK**

CoilJet® Backpack Portable  
HVAC Coil Cleaning System

OPERATING & MAINTENANCE  
INSTRUCTIONS

Thank you for purchasing this SpeedClean® CJ-BKPK CoilJet® Backpack - a Portable HVAC Coil Cleaning System. We appreciate your business and look forward to serving you in the future. As with all SpeedClean products, you can be assured that the finest quality components and workmanship have gone into this unit. Please take a few minutes to read the following Operating and Maintenance Instructions. Please pay particular attention to the safety instructions and exercise caution when using this product.

## Table of Contents

Warranty _____	2
Important Safety Instructions _____	3
Before First Use _____	4
Parts & Features _____	4-5
Operating Instructions _____	6-7
- Pre-Operation Checklist _____	6
- Charging the Battery _____	6
- Replacing the Battery _____	6
- Coil Cleaning _____	6
General Notes _____	7
Maintenance and Storage _____	7
Exploded Parts View _____	8
Replacement Parts _____	9
Troubleshooting _____	10
Technical Data _____	10

## Limited Warranty

This unit has been carefully tested and inspected at the factory and is warranted to be free from defects in material or workmanship. The company will, under this warranty, replace any parts which prove, upon examination, to be defective. This warranty is valid for one year from date of purchase, from an approved vendor. For a list of approved vendors, please contact us or check our website. This warranty excludes accessories, unusual wear, abuse, damage resulting from accident, or unreasonable use of this machine. For warranty information, call SpeedClean directly at the phone number below. This warranty gives you specific legal rights and you may have other rights, which vary from state to state.



For warranty information, contact SpeedClean Customer Service at (800) 995-2222. Proof of purchase is required for warranty service.




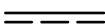


# Important Safety Instructions

Read and understand all instructions before using the unit. Failure to follow all instructions listed below may result in electric shock, fire and/or serious personal injury.

## Save these Instructions!

- Stay alert, watch what you are doing, and use common sense when operating this unit.
- Always check the unit, hoses, fittings, etc. before each use.
- Do not fill with flammable liquid. Do not operate in explosive atmospheres, such as in the presence of flammable liquids, gases or dust.
- Make sure there is adequate ventilation in the work area.
- Keep bystanders and children away while operating this unit.
- Turn unit off and relieve pressure in the spray hose when done.
- Do not use while tired or under the influence of drugs, alcohol, or medication.
- Use only the supplied battery charger. Do not handle the charger with wet hands. Keep charger dry.
- Do not use the unit while plugged into the battery charger.
- Be careful – a fully filled unit is heavy! Avoid any sudden movements when using this unit with the shoulder straps.
- Do not overreach or stand on unstable support. Keep proper footing and balance at all times.
- Wear rubber gloves, rubber boots, goggles or face-shield, etc. Detergents and chemicals may cause injuries to the eyes and skin. Protect yourself from direct skin contact with the chemicals and debris found in the coil cleaning environment.
- Use of any chemicals not recommended by SpeedClean may damage the unit and void the warranty.
- Do not mix chemicals! Mixing incompatible chemicals may damage the unit or cause dangerous, life-threatening chemical reactions.
- Do not use the unit if it does not operate properly or has been damaged. Call SpeedClean for assistance.
- Never point the spray gun at anyone. Do not direct stream at eyes or mouth.
- Always turn machine off after use or when tank is empty. Running a water pump “dry” drains the battery and may cause damage.
- Do not spray the unit with water or chemicals.
- Do not allow the unit to freeze or leave in freezing temperatures.
- Do not use water with a temperature of more than 140°F (60°C).
- Use only SpeedClean-approved accessories and replacement parts.
- Follow maintenance procedures outlined in this manual.

## Guide to Markings

					
Fuse; replace only with fuse of the same type and rating. (This is a 12V battery circuit using a Type F fuse rated 250V)	Read all instructions	Eye protection required	Direct current (DC)	Charging Connector Polarity	High Pressure Output. Direct spray away from persons, pets, equipment, and electrical outlets.

## Before First Use

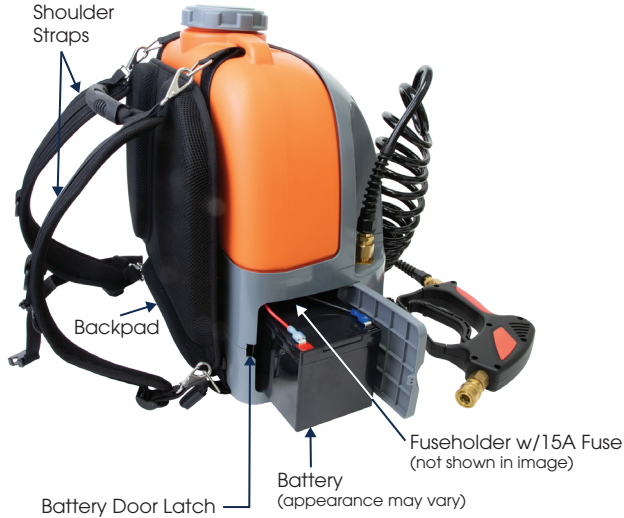
The CoilJet® CJ-125 is shipped fully assembled. However, the battery leads need to be connected before first use. Open the battery door, slide the battery out, and connect the leads – **red wire to the positive (red) terminal and black wire to the negative (black) terminal**.

**NOTE:** The battery should be fully charged before first use. After you unpack the unit and connect the battery, plug the charger into an electrical outlet and connect it to the receptacle on the unit until the light on the charger turns green. **Leave the power switch “OFF” while charging the battery.**

## Parts & Features



# Parts & Features



## SpeedClean® Accessories:

(for the complete offering, see the SpeedClean "Parts & Accessories" booklet)

24" wand extension with 90 degree tip (8945-24)  
36" wand extension with 90 degree tip (8945)  
48" wand extension with 90 degree tip (8945-48)  
60" wand extension with 90 degree tip (8945-60)

18" extension lance assembly (CJ-9655)  
24" extension lance assembly (CJ-9656)  
36" extension lance assembly (CJ-9657)  
48" extension lance assembly (CJ-9658)  
60" extension lance assembly (CJ-9659)

24" long flexible spray wand with 0 degree nozzle (8945-0-DEG-FLEX)  
12" long flexible spray wand with 0 degree nozzle (8945-0-DEG-FW12)  
Flexible spray wand with nozzle (8945-FLEX-24)

45-degree quick disconnect adapter (CJ-QDN-45)  
90-degree quick disconnect adapter (CJ-QDN-90)  
Foaming nozzle assembly (CJ-9619)  
CJ-125 Red 0 Degree Nozzle (CJ-QDN-0004R)  
CJ-125 Yellow 15 Degree Nozzle (CJ-QDN-1504Y)  
CJ-125 Green 25 Degree Nozzle (CJ-QDN-25055G)  
CJ-200 Green 25 Degree Nozzle (CJ-QDN-2508G)  
Mini-Split Cleaning Accessory Kit (CJ-MSB-ACC-KIT)

Battery & Charger Kit (CJ-BKPK-KIT-SB)



# Operating Instructions

## Pre-Operation Checklist

- Check for adequate water and chemical cleaner supply (use only SpeedClean-approved chemicals).
- Make sure the battery has sufficient charge for normal operation (all LEDs illuminated on the Battery Status Indicator).
- Check spray nozzles and suction tips and make sure orifices are not blocked or damaged.
- Check spray hose for damage or kinks.
- Check all connections, fittings, screws and fasteners.

## Charging the Battery

1. The unit is supplied with a 12-volt Lithium Iron Phosphate (LiFePO<sub>4</sub>) battery which, when fully charged and depending on age and condition, will provide up to 1 hour of continuous use or 4-6 hours of intermittent use. While this battery type provides long run time, its power output declines rapidly near the end of its discharge. Accordingly, when the battery status indicator declines rapidly, be prepared to recharge or replace the battery soon.
2. **IMPORTANT BATTERY INFORMATION:** Always charge the battery as soon as possible after use. Leaving a battery discharged for more than a short time may permanently reduce discharge capacity and shorten battery life. Use only the supplied battery charger or SpeedClean-approved alternate.
3. It will take approximately 4 hours to charge a fully discharged battery.
4. Make sure the power switch is "OFF" while charging.
5. An orange or red light means the battery is charging; a green light means the battery is fully charged.
6. The unit can be left plugged in indefinitely - once the battery is fully charged, the battery charger will switch to a "maintain charge" mode.

## Replacing the Battery

1. The battery can be quickly removed and replaced with a fresh one. Spare batteries and chargers are available – contact your local distributor or SpeedClean.
2. To replace the battery:
  - a. Turn power switch "**OFF**".
  - b. Release the latch to open the battery door.
  - c. Carefully slide the battery out and disconnect the wires.
  - d. Connect the wires to the new battery (**CAUTION** - black wire to the negative (black) terminal, red wire to the positive (red) terminal).
  - e. Carefully slide the battery into its compartment and close the door.

## Coil Cleaning

1. Fill the tank with clean water.
2. Install desired chemical bottles into stations 1, 2, and/or 3. Be careful to follow the instructions for each chemical, and **do not over-tighten the bottles**.
3. Set the valve selector to "H<sub>2</sub>O" (water).
4. Turn power switch "ON".
5. To prime the pump: With nozzle removed and the spray gun aimed in a safe direction, squeeze the trigger until a steady stream of water flows. If you have difficulty priming the pump: Make sure the tank is full, elevate the unit, and hold the spray gun below the unit while squeezing the trigger.
6. Set the valve selector to the desired chemical. Squeeze the spray gun trigger until chemical is primed.
7. Attach a nozzle to the spray gun and apply solution evenly to the coils, **following the chemical instructions**.
8. Set the valve selector to "H<sub>2</sub>O" and rinse the coils with clean water. Note: there may be a brief delay for the chemical to pass and clear water to emerge from the spray gun.
9. Turn the power switch "OFF".
10. Relieve the hose pressure by aiming the spray gun in a safe direction and squeezing the trigger.
11. Always engage the spray gun trigger lock while the unit is not in use.

## General Notes

1. This product was developed and tested specifically for use with three SpeedClean chemical products: Speedy 3D Degreaser, Speedy Green Cleaner, and Speedy Fresh Deodorizer. Read and follow the warnings and instructions for each product before use. Using any other chemical products may damage the unit and void the warranty.
2. All three chemical stations are configured to deliver the optimal dilution ratio for the above SpeedClean products.
3. The unit should be kept in an upright position during operation and whenever liquids are in the tank or installed bottles.
4. When the water tank is depleted during use and then refilled, spray pressure may be reduced until the pump attains full prime again. When a chemical bottle is depleted during use, spray pressure will be reduced until the bottle is replaced or refilled, and full prime is attained again through use. In either case, full prime may be hastened by removing the spray nozzle and running the pump for a short time until a steady stream appears. Then replace the nozzle to spray at full pressure.



## WARNINGS



To maximize pump life and battery run-time, the pump is equipped with a pressure switch that automatically disconnects power when the spray gun trigger is released. The unit may appear to be "OFF" (not running), but if the power switch is on or the system pressure is not relieved, the unit will discharge when the spray gun trigger is squeezed. Do not leave the unit in automatic shut-off condition for more than 10 minutes.

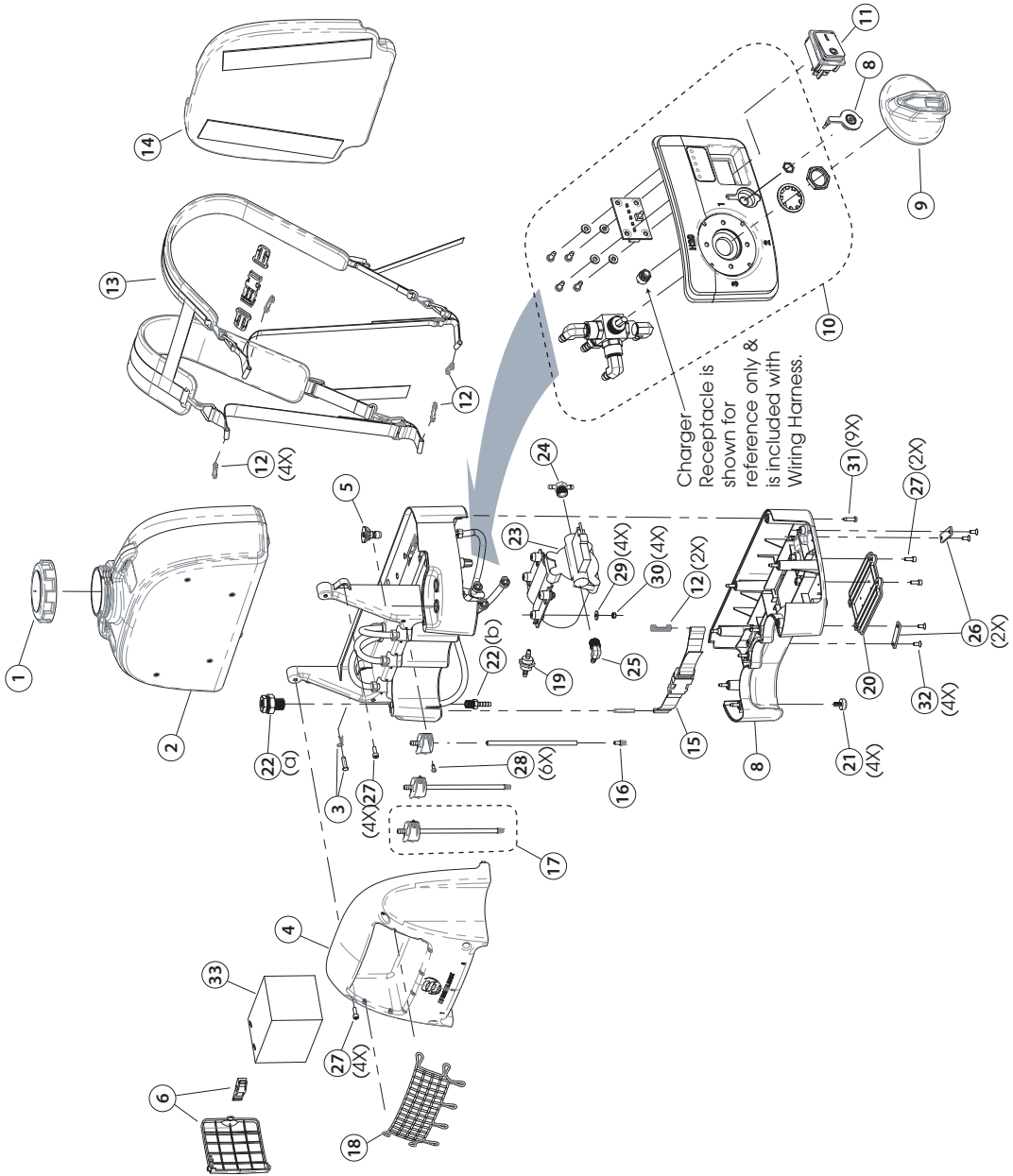


The cords, wires, and/or cables supplied with this product may contain chemicals, including lead or lead compounds, known to the State of California to cause cancer and birth defects or other reproductive harm. Always wash hands after using.

## Maintenance & Storage

1. At the end of each use, flush residual chemicals from the pump: Set valve selector to "H<sub>2</sub>O" and run the pump until clear water flows.
2. For each chemical that will not be used again within 24 hours: Remove that chemical bottle and recap it for later use. Make sure the tank has adequate water, and the valve selector is set to the appropriate station. Fill an empty bottle with clean water, install it, and run at least 1/2 bottle through the unit.
3. Do not store the unit outdoors, and avoid exposing the unit to freezing temperatures.
4. If the unit is to be stored for an extended period of time where it may be exposed to freezing temperatures: Fill the water tank about halfway with RV antifreeze. **IMPORTANT:** Use only RV antifreeze, as regular antifreeze may damage the system. Use a clean chemical bottle at each station to distribute antifreeze throughout the system. Turn unit "OFF", relieve spray hose pressure, and engage trigger lock.
5. Before using the unit again after long-term storage, flush the system by repeating item 4 with clean water.
6. To preserve battery life, charge the unit at least once per month during long periods of storage. The unit may be left connected to the charger indefinitely without damage.

# Exploded Parts View



## Replacement Parts

Ref #	Order Item #	Description
1	9647-1-S	PLASTIC CAP, 3.5" CJ-125 (GREY)
2	CJ-BKPK-02	CJ-BKPK Orange Water Tank
3	CJ2-15	Tank Pin with Retainer
4	CJ-BKPK-04	CJ-BKPK Grey Top
5	CJ-QDN-1504Y 15°	Spray Nozzle, 15-deg, # 040
6	CJ-BKPK-06	CJ-BKPK Battery Door Assembly
7	CJ-BKPK-07	CJ-BKPK Grey Base Lower
8	CJ-BKPK-08	CJ-BKPK Charger Port Cover
9	CJ-BKPK-09	CJ-BKPK Valve Selector
10	CJ-BKPK-10	CJ-BKPK Control Panel Assembly
11	CJ2-22	CJ Power Switch
12	CJ-BKPK-12	CJ-BKPK Strap Retainer
13	CJ-BKPK-13	CJ-BKPK Shoulder Strap Assembly
14	CJ-BKPK-14	CJ-BKPK Back Pad
15	CJ-BKPK-15	CJ-BKPK Bottle Strap
16	CJ-BKPK-16	CJ-BKPK Suction Tip
17	CJ-BKPK-17	CJ-BKPK Bottle Siphon Assembly
18	CJ-BKPK-18	CJ-BKPK Cargo Net
19	CJ2-07-1	CHECK VALVE, 1/4 BARB 1/3 PSI
20	CJ-BKPK-20	CJ-BKPK Maintenance Door
21	CJ-BKPK-21	CJ-BKPK Rubber Foot
22	CJ-BKPK-22	CJ-BKPK Spray Hose Connection
23	CJ2-06-S	CJ125 - PUMP
24	CJ2-11-2	BRASS TEE 3/8 NPT X 1/4 BARB
25	CJ-BKPK-25	CJ-BKPK Pump Outlet Fitting
26	CJ-BKPK-26	CJ-BKPK Strap Cleat
27	Hardware items 27-32 are not offered as replacement parts. Descriptions are provided for user information only.	Socket Head Cap Screw, M5 x 14
28		Thread-Forming Screw, M4 x 8
29		Fender Washer, M5
30		Lock Nut, M5
31		Thread-Forming Screw, M5 x 20
32		Flat Head Machine Screw, M5 x 12
33	CJ-BKPK-BATTERY	CJ-BKPK LiFePO <sub>4</sub> 12v12Ah Battery
<b>Additional Parts</b> (not shown in exploded view)		
34	CJ-BKPK-WH	CJ-BKPK Wiring Harness (includes Fuse)
35	CJ2-17	Fuse, 15A
36	CJ-BKPK-SGA	Spray Gun with 20 ft. Hose, Strain Relief at each Fitting
37	CJ-BKPK-CHARGER	CJ-BKPK LiFePO <sub>4</sub> Battery Charger
38	CJ-BKPK-HRK	CJ-BKPK Internal Hose Rebuild Kit
39	9648	3/8 in., Ear Clamp

## Troubleshooting

PROBLEM	POSSIBLE CAUSES	REMEDIES
Pump does not start or stops abruptly	<ul style="list-style-type: none"> <li>Power switch is OFF</li> <li>Battery wires disconnected</li> <li>Fuse blown</li> <li>Thermal breaker tripped</li> <li>Battery is discharged</li> <li>Excessive pressure buildup</li> <li>Faulty pressure switch or pump</li> <li>Unit not used for extended time</li> </ul>	<ul style="list-style-type: none"> <li>Turn power switch ON</li> <li>Check battery wires</li> <li>Check / replace fuse</li> <li>Turn unit OFF until cool</li> <li>Charge or replace battery</li> <li>Squeeze trigger to relieve pressure</li> <li>Replace pump</li> <li>Contact SpeedClean</li> </ul>
Pump continues to run even when trigger is released	<ul style="list-style-type: none"> <li>Tank &amp;/or chemical bottle(s) empty</li> <li>Air in system</li> <li>Leak(s) in system</li> <li>Faulty pressure switch</li> </ul>	<ul style="list-style-type: none"> <li>Fill tank and/or bottle(s)</li> <li>Prime the pump</li> <li>Check for external and internal leaks</li> <li>Replace pump</li> </ul>
Poor water flow/ pump not priming	<ul style="list-style-type: none"> <li>Water tank hose connection clogged</li> </ul>	<ul style="list-style-type: none"> <li>Remove any sediment or debris accumulated in the hose connection nipple at the bottom of the water tank</li> </ul>
Low or erratic pressure	<ul style="list-style-type: none"> <li>Spray nozzle worn</li> <li>Spray nozzle clogged</li> <li>Water is low</li> <li>Air sucked into system</li> <li>Vacuum lock (cap vent clogged)</li> <li>Water temperature too high</li> <li>Low battery</li> </ul>	<ul style="list-style-type: none"> <li>Replace spray nozzle</li> <li>Clean the nozzle orifice</li> <li>Add water</li> <li>Remove nozzle &amp; prime pump</li> <li>Clean cap air vent</li> <li>Add cool water to reduce temp</li> <li>Charge or replace battery</li> </ul>
Low or no chemical uptake	<ul style="list-style-type: none"> <li>Suction tip clogged or damaged</li> <li>Internal check valve clogged</li> </ul>	<ul style="list-style-type: none"> <li>Ensure chemical is free of debris &amp; use a small paper clip to clear suction tip</li> <li>Clean or replace check valve</li> </ul>
Too much chemical uptake	<ul style="list-style-type: none"> <li>Suction tip is damaged or missing</li> </ul>	<ul style="list-style-type: none"> <li>Replace suction tip</li> </ul>
Pump cycles off and on during use	<ul style="list-style-type: none"> <li>Undersized spray nozzle</li> </ul>	<ul style="list-style-type: none"> <li>Use minimum #040 size nozzle</li> </ul>

## Technical Data

Motor Power	12 VDC (—), 0.2 HP
Battery	12V, 12 Ah rechargeable LiFePO <sub>4</sub>
Battery Charger	Input: 100 - 240 VAC (~), 50/60 Hz, 2.5A. Output: 14.6 VDC (—), 4.0A
Water Requirements	On-Board
Output Water Pressure	125 PSI (8.5 bar)
Output Water Flow	0.7 GPM (2.6 liters) with #040 spray nozzle
Pump	Positive displacement diaphragm
Water Tank	2.5 Gallons (9.5 liters)
Chemicals Capacity	3 Bottles, 16 ounces (473 milliliters) each
Noise Level	66 dBA
Dimensions	17" high x 15-1/2" wide x 10-1/2" deep (43 cm x 39 cm x 27 cm)
Weight	21.4 lbs (9.7 kg) empty, 44.5 lbs (20.2 kg) with full water and chemicals





SpeedyFoam®



CoilJet®



Condenser Needle™



Mini-Split Bib® Kit



**SPEEDCLEAN®**

DiversiTech Corporation  
Duluth, GA 30097  
800.995.2222  
[www.speedclean.com](http://www.speedclean.com)