

# Smart Spout™

▶▶ Replacement Tub Spout for 1/2" Copper Tube

Patent #7,373,674



## Secure Connection

Tightens firm and flush to the finished wall.

## Clean Finish

No need to caulk around the spout after installation.

## Quick Install

Easily slips over copper tube. Optional adapter extension available.

## Reduces Moisture

Free Dry Seal Pipe Collar™ reduces moisture in wall cavity and helps prevent mold.

Supply

Drainage

Support

[www.siouxchief.com](http://www.siouxchief.com)

TAKE THE FIELD.



# Features & Benefits

## Secure Connection

The Smart Spout™ is the last replacement spout you'll ever buy. Uniquely designed and patented, the Smart Spout actually pulls itself towards the wall providing a firm and secure installation. The body of the spout is made from heavy, die-cast zinc material and the internal clamping mechanism and spring are made from corrosion-resistant Type 304 stainless steel. Smart Spout is designed to work only when 1/2" copper tube penetrates through the wall.

## Reduces Moisture

Each spout includes a free, self-adhesive Dry Seal Pipe Collar™. This plastic disc is sized to fit tightly over the copper tube and is tapered to direct water away from the open hole.

## Clean Finish

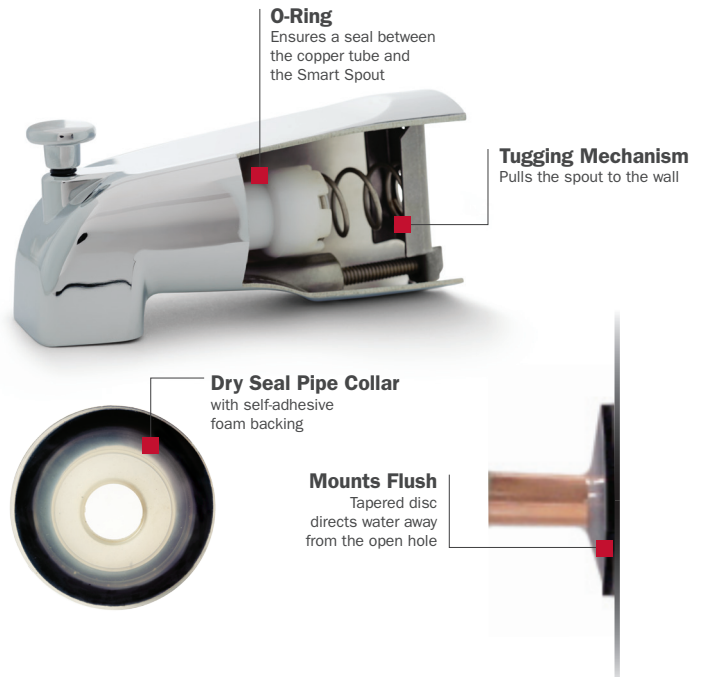
Available in three finishes with or without a shower diverter, the Smart Spout is designed to pull itself towards the wall and therefore eliminates the need for unsightly caulk required with other brands.

## Quick Install

Remove the old spout. Make sure the copper tube penetrating through the wall is at least 2-5/8" long, clean the copper then push the Smart Spout over the tube and tighten. It's that easy.

### Problem ...

Smart Spout eliminates unsightly caulk and messy clean up at the wall



**1.** Remove old spout; clean the copper tube to remove burrs; clean the wall surface around the spout.



**2.** Mark the copper stub out even with the hash mark on the underside of the Smart Spout and cut off excess pipe.



**3.** Thoroughly clean inside and outside of copper tube to remove all burrs.



**4.** Remove backing strip on Dry Seal Pipe Collar. Push Dry Seal Pipe Collar over tube and apply firmly to wall. Push the Smart Spout onto the tube, and against the wall.



**5.** Tighten the screw to secure the Smart Spout snug to the wall. Do NOT over tighten as the wall could become damaged.



**6.** Check for tightness and turn screw until desired amount of rigidity is achieved. Turn on valve and check for leaks.

# Repair Adapter Extension Kit

## Quick Install

If the copper stub out penetrating through the wall is too short once the old spout is removed, extend the copper tube length using the copper nipple adapter. This repair adapter fits inside the 1/2" copper stub out. The repair adapter can be soldered, however if soldering is not an option, it can be glued in place with the specially formulated copper-to-copper, 2-step epoxy provided. Substituting the epoxy provided in the kit voids our warranty.

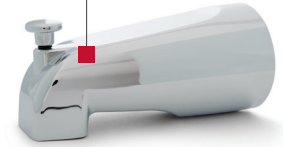
### Repair Adapter Kit

Includes extension nipple, sand cloth, epoxy and applicator stick



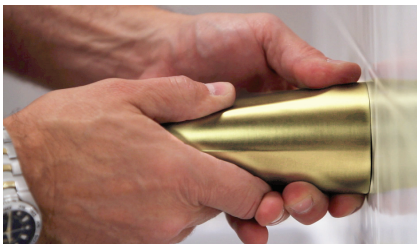
### Smart Spout

Installs on 1/2" copper tube only



### Tools needed

Pencil, hacksaw and screwdriver



**1.** Remove old spout; clean the copper tube to remove burrs; clean the wall surface around the spout.



**2.** Remove any old fittings with hacksaw, making sure to leave at least a 1-1/4" length of copper tube exiting the wall.



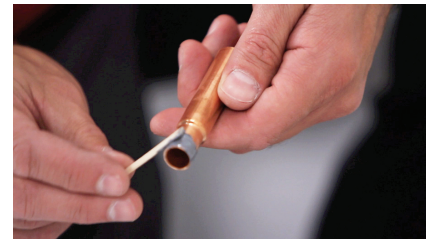
**3.** Thoroughly clean inside and outside of copper tube to remove all burrs.



**4.** Dry fit repair adapter to make sure it fully slips into copper tube in wall.



**5.** Squeeze one side of epoxy pouch to burst the middle seal. Work epoxy to other side and mix thoroughly until gray color appears.



**6.** Working quickly, apply epoxy completely to outside of reduced end of repair adapter.



**7.** Then apply epoxy completely to inside of tube in wall.

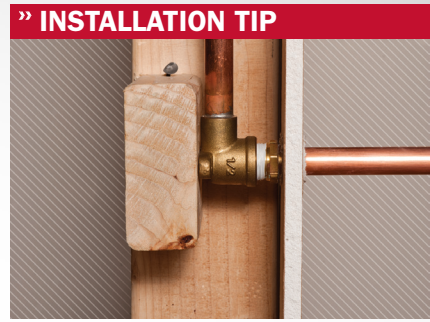


**8.** Insert repair adapter into tube in wall and wipe away excess epoxy on exterior of tube.



**9.** Measure length using hash mark and proceed with Smart Spout installation on [page 1, step 2](#).

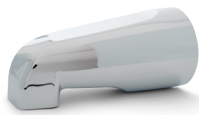
In instances where a threaded nipple is discovered after the old spout is removed, Sioux Chief offers the 614-8L threaded MIP Bullet™ (sold separately) allowing you to stub out with 1/2" copper tube and use the Smart Spout.



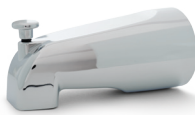
Install 614-8L threaded MIP bullet into drop eared elbow to bring copper tube outside the finished wall prior to installing the Smart Spout.



614-8L



972-32



972-36



972-36RB



972-36SN



972-3RAKIT



972-361PK2

Every Smart Spout includes free Dry Seal Pipe Collar and installation instructions.

### » Buying Information

ITEM NO.	DESCRIPTION	U/M	MIN	CASE	PRICE
<b>SMART SPOUT</b>					
972-32	Without Diverter, Chrome	EA	1	18	\$16.15 EA
972-32RB	Without Diverter, Oil Rubbed Bronze	EA	1	18	\$18.25 EA
972-32SN	Without Diverter, Satin Nickel	EA	1	18	\$18.25 EA
972-36	With Diverter, Chrome	EA	1	18	\$21.10 EA
972-36RB	With Diverter, Oil Rubbed Bronze	EA	1	18	\$23.75 EA
972-36SN	With Diverter, Satin Nickel	EA	1	18	\$23.75 EA
<b>SMART SPOUT WITH ADAPTER KIT</b>					
972-361PK2	With Diverter and Repair Adapter Kit, Chrome, Clamshell pkg	EA	6	6	\$27.67 EA
972-362PK2	With Diverter and Repair Adapter Kit, Satin Nickel, Clamshell pkg	EA	6	6	\$30.25 EA
<b>EXTENSION ADAPTER</b>					
972-3RA	1/2" Copper Extension Adapter Only, 5/bag	BG	1	10	\$11.25 BG
972-3RAKIT	1/2" Copper Extension Adapter Kit, 1/bag	BG	1	10	\$6.90 BG
614-8L	1/2" CTS x 8"L MIP Bullet	EA	50	50	\$6.25 EA

Scan the QR to watch the Smart Spout installation video



24110 South Peculiar Drive  
 Peculiar, Missouri 64078  
**P** 1.800.821.3944  
**F** 1.800.758.5950  
**DISTRIBUTED BY**

