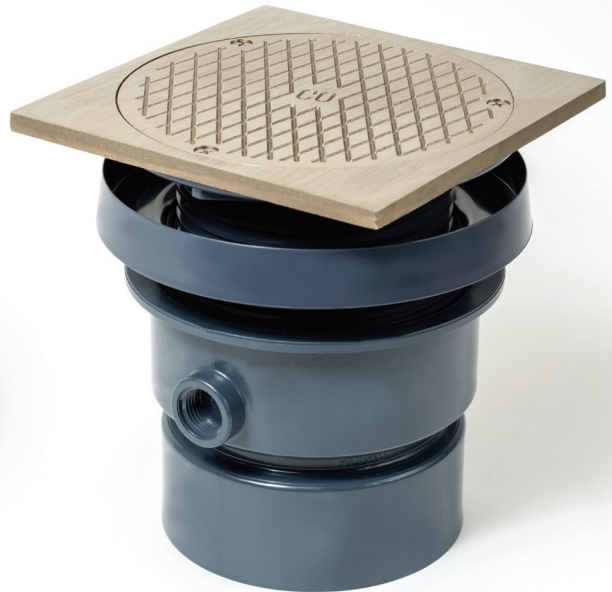


FinishLine™

Adjustable Drainage System



Adjust After the Pour
Finish Fixtures remain adjustable after the concrete pour — right up until flooring installation.

Protect Finish Fixtures

Keep strainers/covers off the job site until rough construction is finished.

Correct for Level

Unique Shims quickly and easily correct tilted fixtures.

Achieve a Perfect Finish

Using the FinishLine allows you to design a perfect finish into every job — every time.





“The FinishLine drains are a great time saver for us. The ability to set our drains without boxing them out has not only saved us countless hours in labor, but it has allowed us the ability to provide a better finished product to our customers. Once the coring plug is removed we install the drain head and adjust to perfect level finish every time.”

R. Carrozza Plumbing
Franklin Park, IL

FinishLine™

»» Adjustable Drainage System

Many Problems

The FinishLine Solution

FinishLine Installation

Product Types

Installation Comparison

Options & Accessories

Packaging Options

Additional Resources

Project Profile

Featured Projects



Many Problems



Boxing Out/Wrapping

Box-outs need to be covered during rough-in and refilled before flooring. Additional time must be spent to wrap heads with foam, or build and set frames around fixtures.



Construction Damage

During rough construction, heavy equipment and building materials can easily damage fixtures specified for foot traffic. Clogs due to job site debris are also a concern.



Duct Tape

While duct tape can prevent concrete and debris from entering the drain line, it offers no protection from load or impact damage. Plus, it is often a time-consuming nuisance to remove.



Fixtures Too Low/Tilted

Changes to the flooring spec or abuse during the pour can lead to fixtures locked in the slab too low, too high or tilted. These problems make the product unsightly and unsanitary.

The FinishLine Solution

Protect Finish Fixtures

- The FinishLine system allows you to protect strainers and covers from abuse the best way possible - by keeping them off the job site until construction is finished.
- The Coring Plug installs at rough-in. No worries about theft or damage to expensive Finish Fixtures during rough construction.



Adjust After the Pour

- After removal of the Coring Plug, the Finish Fixture installs into the perfectly cored hole provided by the Coring Sleeve.
- Adjust the Finish Fixture to any height necessary - up to 1 $\frac{1}{4}$ " without accessories. This means your fixtures can always be set flush with the finished floor.
- Square strainers can finally be set square with walls and tile; easily and precisely. No guesswork needed for angle or direction.



Correct for Level

- Quickly and easily level the Finish Fixture with the FinishLine's unique and exclusive Shim Kit.
- Shims install under the ring/strainer to bring low sides up to floor level.
- No stacking washers, or unsightly trip hazards from tilted fixtures.





Finish Fixture

The Finish Fixture installs into the Coring Sleeve after rough construction is complete. No duct tape, no damage. It easily adjusts after the slab pour to any flooring spec.

ACME Threads

The square, ACME thread design provides strength and easy adjustment, even when debris is present. Threads allow secondary drainage to pass freely.

Rough-In Fixture

The "Rough-in Fixture" is comprised of a Coring Plug, Coring Sleeve and Base Adapter.



Coring Plug

Tough and temporary, the Coring Plug covers the Coring Sleeve and takes the abuse during construction. Keeps the Finish Fixture off the job site and protects the internal threads and piping system from construction damage.

Coring Sleeve

The Coring Sleeve forms a perfectly cored hole in the concrete slab, which ensures complete adjustability of the Finish Fixture. Adjust the Coring Sleeve before the pour to be flush with (or slightly below) the slab level.

Base Adapter

The Base Adapter makes the connection to the drainage system.

Many Options Available

On-grade and above-grade floor drains and cleanouts with no-hub, push-joint and solvent weld connections.

FinishLine Installation

Set Drain

- Connect the rough-in fixture to the pipe and adjust the Coring Sleeve to be flush, or slightly below slab level.
- No need to estimate/anticipate finish floor level at rough-in, no need to wrap threads or cover top with duct tape.
- Apply adhesive (silicone) to the Coring Sleeve threads, if desired, to lock it in place before the slab is poured.



Pour/Finish Concrete Slab

- Pour and finish the slab flush with the Coring Sleeve.
- The flush surface makes it easy for concrete contractors to provide a smooth, flat slab finish.
- No need to be present during the pour to make last-minute corrections/adjustments.



Remove Coring Plug

- After rough construction, and before the finish floor is installed, remove the Coring Plug.
- The Coring Plug has taken all the job site abuse, protected the internal threads and prevented debris from entering the drain lines.
- Coring Plug is recyclable with all #2 (HDPE) materials.



Install/Adjust Finish Fixture

- Install the Finish Fixture into the Coring Sleeve and adjust to floor level - from flush*, to 1¹/₄" above the Coring Sleeve. Extensions are available for additional height.
- No problem if flooring spec changes after rough-in. Flooring contractor can make final adjustments to height and alignment as necessary for a perfect finish.
- Apply adhesive (silicone) to the Finish Fixture threads, if desired, to lock it in place.

*Minimum height with square strainer = 5/16"



Correct for Level

- If the Finish Fixture surface is tilted, remove the ring/strainer and install FinishLine Shims as needed to bring low sides up to floor level.
- Stack multiple Shims if necessary.



Perfect Finish

- The FinishLine allows for a perfect finish, reflecting the professionalism with which it was specified and installed.
- No job site damage to strainers/covers.
- No fixtures too low or too high.
- No tilted fixtures.
- No scraping duct tape.
- No boxing out.



Product Types

On-Grade Drains 832 Series

The 832 Series on-grade floor drains are for use in ground-level applications, or where a waterproofing membrane is not needed.

- Multiple sizes of round or square pattern strainers in nickel-bronze and stainless steel for pedestrian traffic, and ductile iron material for heavy-duty applications.
- Connection sizes/types to fit any application. Cast iron no-hub or push-joint, ABS/PVC Sch. 40 hub, or stainless steel.



Flashing Drains 833 Series

With a clamping collar and flanged Base Adapter, the 833 Series Flashing drains are typically installed when a waterproofing membrane is used to protect finished areas under the drain.

- Multiple sizes of round or square pattern strainers in nickel-bronze and stainless steel for pedestrian traffic, and ductile iron material for heavy-duty applications.
- Mixed-material models, with poly tops and cast iron bases, offer cost-effective alternatives to all cast iron models.
- Connection sizes/types to fit any application - cast iron no-hub, push-joint, and inside-caulk, or ABS/PVC Sch. 40 hub.



Halo Models 822 Series

The unique and versatile 822 Series Halo models (floor drains and cleanouts available) have a 2" wide stainless steel mounting flange. The Halo flange makes installation easy in cored concrete, corrugated decks, wood subfloors, etc.

- Round or square pattern strainers/covers in nickel-bronze and stainless steel.
- Cast iron models with 2" and 3" no-hub connection, or ABS/PVC with 2x3" and 3x4" solvent weld connection.



Cleanouts 834 Series

Floor cleanouts provide access to drain lines for service/maintenance. The 834 Series cleanout bodies are sealed with a plug to block sewer gas and topped with solid covers suitable for various traffic requirements.

- Round or square pattern scoriated covers in nickel-bronze and stainless steel for pedestrian traffic, and ductile iron material for heavy-duty applications.
- Base Adapter includes polypro cleanout plug.
- Connection sizes/types to fit any application - cast iron no-hub or push-joint, ABS/PVC Sch. 40 hub, or stainless steel.



Installation Comparison

Standard Floor Drain

1. Set Drain at Rough-in*

- Connect outlet to pipe and adjust tailpiece to the “anticipated” level of the finished floor.
Note: If using square strainers, set in proper orientation with tile/grout lines.
- Cover strainer with duct tape for protection.
Note: Duct tape will provide reasonable protection from concrete and large debris, but not from load/impact damage.
- Wrap threads on tailpiece with tape or foam-wrap to allow adjustment after the pour.

* This step is skipped if fixtures are boxed out. Drains would be installed after slab pour and small batches of concrete prepared and poured around drains by plumbing contractor after installation.



2. Pour/Finish Concrete Slab

- Contractors are assigned to job sites during slab pour to address any issues with damage, misalignment or necessary last-minute adjustments.
Note: While on-site damage control is not necessary, this stage of construction is notorious for causing issues with drainage fixtures that are difficult to correct once the slab sets.



3. Trim/Flooring Stage

- Remove duct tape and residue from strainers.
Note: Replace any strainers that are missing or have been damaged during construction.
- If possible, make final adjustments to fixtures that were previously foam wrapped.
Note: If wrapping was not used, or failed to provide adjustment, determine the best way to correct low/high fixtures.
Note: If any changes to the flooring spec were made after the slab pour, it may require fixtures to be chipped out.
- Level any tilted strainers (stacked washers, etc.).
Note: In most cases, this will only level the strainer, not the ring around the strainer, which is part of the locked-in-concrete tailpiece.



FinishLine Floor Drain

1. Set Drain at Rough-in

- Connect outlet to pipe and adjust Coring Sleeve to be flush with (or just below) the slab level.

Note: Locating bristles (see Options/Accessories) can be used if the Coring Sleeve is to be installed below slab level.



2. Pour/Finish Concrete Slab

- Setting the FinishLine flush with the slab allows concrete contractors to quickly and easily finish right over the top of the Rough-in Fixture. No hand-finishing around the drain.

Note: Although a contractor can be on site during the pour, the FinishLine allows most issues to be corrected easily afterwards.



3. Trim/Flooring Stage

- Locate the Rough-in Fixture, and remove Coring Plug.

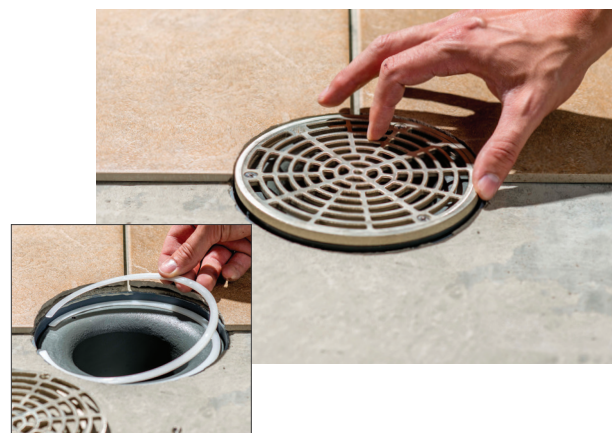
Note: Tap any concrete that's hardened above the Coring Plug with a hammer to knock it loose.

- Install the Finish Fixture and adjust to finished floor level.

Note: The Finish Fixture can be given to the flooring contractor, allowing them to install and adjust as necessary.

- Level any tilted strainers.

Note: The FinishLine Shim Kit (see Options/Accessories) levels both the ring and strainer quickly and easily.



Options & Accessories

Extension Adapters

Threaded ductile iron extension adapters install between the Coring Sleeve and the Finish Fixture. Adapters can be stacked for additional height.



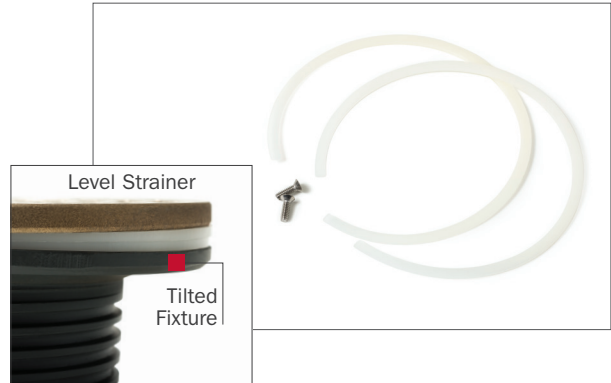
Hub Drain Fixtures

Extended strainer rims and hub drain Finish Fixtures are available for condensate applications where prevention of surface water drainage is important.



Shim Kits

Round, wedge-shaped Shims, install under ring and strainer/cover. Easily correct for level when fixtures are tilted. Kits include two Shims and two (longer) screws.



Locating Bristles

Attach the flexible locating bristles to the recess in the Coring Plug. Bristles flex flat under concrete finishing tools, then stand back up for easy location of Rough-in Fixtures after the slab pour.



Hinged Strainers

Round and square hinged strainers are available in nickel-bronze or stainless steel. Hinged strainers provide access to the drain while helping prevent loss or misplacement of the strainer.



Condensate Funnels

Round and oval pattern condensate funnels attach to the Finish Fixture strainer. Funnels collect waste from condensate lines or other sources above the floor while also allowing surface drainage.



Debris Basket

Stainless steel wire mesh debris baskets install in the Finish Fixture, just under the strainer. Baskets prevent debris from entering the drain line causing build-up and clogs.



Vandal Resistant Screws

Stainless steel spanner screws are available for strainers/covers to help prevent theft or unauthorized removal. Spanner bits for 1/4" socket available for service and maintenance.



Packaging Options

Complete Assemblies

FinishLine complete assemblies offer a convenient way to specify/order/stock a single item number. The complete assembly includes both the Rough-in Fixture and Finish Fixture.

- Complete assemblies are individually boxed and labeled.
- The Finish Fixture is boxed and labeled separately - ready for the job trailer - inside the complete assembly box (see right).



Rough-in and Finish Fixtures

Due to the amount of time between the rough-in and finish stages on a typical job, many contractors prefer to buy the FinishLine Rough-in Fixture and Finish Fixture separately.

Also, because the system is modular, buying a few Finish Fixtures and a few Rough-in Fixtures can provide many popular combinations - which can help reduce stocking and inventory.

- Rough-in Fixtures are packed/shipped per order or carton quantity.
- Finish Fixtures (always individually boxed) are packed/shipped per order or carton quantity.



Additional Resources

Product/Buying Information

Up-to-date item numbers, packaging information and pricing for all FinishLine items is available on our website.

833-3SPNQ 832-3HHD 832-3HNR 863-FA

BUYING INFO SPEC SHEETS VIDEO OPTIONS

Item No.	Ring & Strainer	Dim A	Dim B	Dim C	Pkg	Min Qty	Case Qty	List Price
ROUGH-IN DRAIN								
(lug)	2"			B	1	1		\$31.50 EA
(lug)	2"			B	1	1		\$31.50 EA
(lug)	3"			B	1	1		\$31.50 EA
(lug)	3"			B	1	1		\$31.50 EA
COMPLETE ASSEMBLY								
Bronze	2"	5 1/4"	5 1/8"-1"	B	1	1		\$83.50 EA
Bronze	3"	5 1/4"	5 1/8"-1"	B	1	1		\$83.50 EA

QR Code

siouxchief.com/products

Spec Sheets

Specification sheets for FinishLine and other commercial drainage products provide detailed product information for engineer submittals.

822 Series - Adjustable Floor Drain with Deck Flange - FinishLine Halo - Sch. 40 Conn. [Download](#)

822 Series - Adjustable Floor Drain with Deck Flange - Halo - Sch. 40 Conn. [Download](#)

825 Series - Shower Module Drain - Solvent Weld Conn. [Download](#)

827 and 828 Series - Shower Module Drain - No-Caulk Conn. [Download](#)

832 Series [Download](#)

832 Series [Download](#)

ON-GRADE ADJUSTABLE FLOOR DRAIN

QR Code

siouxchief.com/technical/spec-sheets

Revit/BIM Files

Revit files for FinishLine and other Sioux Chief commercial drainage products are available for download and use in BIM designs.

Porcelain-Coated Cast Iron Floor Sink with Flange & NB Strainer 12" x 12" (861 Series) [Download](#)

FinishLine™ Adjustable Floor Drain On-Grade with Sm [Download](#)

Porcelain-Coated Cast Iron Floor Sink with Flange & S [Download](#)

FinishLine™ Adjustable Floor Drain On-Grade with Ro [Download](#)

FinishLine™ Adjustable Floor Drain On-Grade with Sm [Download](#)

Porcelain-Coated Cast Iron Floor Sink with Flange 12" [Download](#)

Drain On-Grade with Sq [Download](#)

oor Sink with Strainer 8" [Download](#)

with Square Strainer (822 Series) [Download](#)

oor Sink 8" x 8" (861 Series) [Download](#)

oor Sink with NB Strainer 8" x 8" (861 Series) [Download](#)

with Round Strainer (822 Series) [Download](#)

QR Code

siouxchief.com/bim-resources

Product Video

Learn more about the FinishLine system by visiting our YouTube page. The video describes the components of the FinishLine system, explains the features and benefits, and demonstrates how the system works.

Sioux Chief
FinishLine™
Adjustable Floor Drain

QR Code

siouxchief.com/multimedia/videos

Project Profile

MERCY HOSPITAL

» Joplin, Missouri

“ (It's all about labor savings.) One product Sioux Chief has and I've used on my past jobs is the FinishLine drain. The biggest thing about it is the adjustment after the pour - saves time and labor on going back and chipping it. Now that we're using the FinishLine drain, never had a problem with quality - it's always been there. ”

Clint Morgan - Superintendent
US Engineering
Kansas City, MO



» Watch the Video



FinishLine Installations - Featured Projects

Apartments

The Orsini Apartments
Worcester Loomworks Apartments
Camden NoMa Apartments
Frank Scott Lakeside Apartments
3rd & Union Apartments
Metro Lofts
Villas on Rensch
Hitchner Building
Museum Tower
Gables Republic Tower

Location

Los Angeles, CA
Worcester, CT
Washington, D.C.
O'Fallon, IL
Bloomington, IN
St. Louis, MO
Amherst, NY
Pittston, PA
Dallas, TX
Dallas, TX

Assisted Living

Meridian Village
Cedarhurst
Mainstreet Senior Living Communities
Aberdeen Heights
Clermont Nursing Care Center
Westminster Place at Bloomsburg
Windy Hill Villiage
Autumn Leaves Residential Home
Central Utah Veterans Home
Linden Grove

Location

Edwardsville, IL
Shiloh, IL
Indianapolis, IN
Kirkwood, MO
Milford, OH
Bloomsburg, PA
Phillipsburg, PA
San Antonio, TX
Payson, UT
New Berlin, WI

Culture/Religion

Vernon Park Church of God
Heritage Center
Brownsburg Baptist Church
Kenrick-Glennon Seminary
Peabody Opera House
Trinity Episcopal Church

Location

Lynwood, IL
Plainfield, IL
Brownsburg, IN
St. Louis, MO
St. Louis, MO
Galveston, TX

Food/Restaurant

McDonald's
Chick-Fil-A
Chipotle
Starbucks
Traviana Italian Kitchen
Fogo de Chao Brazilian Steak House
The Patio BBQ Restaurant
Clara's Restaurant
Jack's Steakhouse
Mambo Seafood
D'amico's Italian Market & Café

Location

National/Regional
National/Regional
National/Regional
National/Regional
Destin, FL
Chicago, IL
Lombard, IL
Woodridge, IL
Garden City, KS
Houston, TX
Sugarland, TX

Grocery

Kroger Grocery Stores
Meijer Stores
Sendick's Market
Harris Teeter Supermarkets
Woodmen's Market
HyVee
Brothers Market Grocery
Caputo's Italian Village
Mariano's Fresh Market

Location

National/Regional
National/Regional
National/Regional
National/Regional
National/Regional
Lisbon, IA
Carol Stream, IL
Chicagoland, IL

Health Care

St. Joseph's Presbyterian Hospital
Max Planck Institute
Dakota Dialysis Centers
Silver Cross Hospital
Kingman Community Hospital
Via Christi Hospital
Crittenton Hospital Medical Center

Location

Denver, CO
Jupiter, FL
Chicagoland, IL
New Lenox, IL
Kingman, KS
Witchita, KS
Rochester Hills, MI

St. John's Hospital
Mercy Hospital
Margaret Maclean Animal Welfare Center
Ressler Building
Berks Center for Digestive Health
Children's Hospital of Milwaukee
Wheaton Franciscan Health Care

Creve Coeur, MO
Joplin, MO
Great Falls, MT
Coal Township, PA
Wyomissing, PA
Milwaukee, WI
Racine, WI

Hospitality

Viceroy Hotel
Staybridge Hotel
Pear Tree Inn
Alexander Hotel
Grand Victoria Hotel
Greek Town Casino Hotel
Westin Book Cadillac Hotel
Hilton Homewood Suites
Sunburst Hotel
Marriot Towneplace Suites
Hard Rock Hotel & Casino
Osage Hotel & Casino
Holiday Inn Express
Hilton Garden Inn

Location

Snowmass, CO
Atlanta, GA
Champaign, IL
Indianapolis, IN
Rising Sun, IN
Detroit, MI
Detroit, MI
Richmond Heights, MO
Sidney, MT
Buffalo, NY
Catoosa, OK
Ponca City, OK
Dickson City, PA
Chesapeake, VA

Military Base

Tyndall Air Force Base
Lawrence Rediness Training Center
Whiteman Airforce Base
Nellis Air Force Base
Fort Drum Army Base
Fort Bliss Army Base

Location

Panama City, FL
Lawrence, IN
Whiteman, MO
Las Vegas, NV
Fort Drum, NY
El Paso, TX

Mixed Use

1026 Madison Street
Buick Building
Streets of St Charles
Interbake Bulding Renovation

Location

Chicago, IL
Indianapolis, IN
St. Charles, MO
Richmond, VA

Production/Manufacturing

Pikes Peak Winery
Fabwerks
Honeywell FM&T - National Security Campus
Pfizer/Alacer Plant
Victory Brewery
CHR Hansen

Location

Colorado Springs, CO
Crest Hill, IL
Kansas City, MO
Carlisle, PA
Parkesburg, PA
Milwaukee, WI

School/University

Stamford High School - Boyle Stadium
Hapeville Charter Career Academy
Young Harris College
Belle Valley High School
Southern Illinois University
Wesclin High School
Noblesville Elementary School
Westfield High School
Wayne State University
Michigan State University
Alexandria High School
Caldwell Community College
Dickenson College Athletic Facility
West Chester University
The Goddard School
Madison Metro School District
Concordia University
Milwaukee School of Engineering

Location

Stamford, CT
Atlanta, GA
Young Harris, GA
Belleville, IL
Edwardsville, IL
Trenton, IL
Noblesville, IN
Westfield, IN
Detroit, MI
East Lansing, MI
Alexandria, MN
Lenoir, NC
Carlisle, PA
West Chester, PA
Katy, TX
Madison, WI
Mequon, WI
Milwaukee, WI

Engineers Specifying/Approving the FinishLine System

AE Associates
Given & Associates
McGrath Engineering
Matern Professional Engineering
Landmark Facilities Group, Inc.
Jordan Skala Engineers
Perry Crabb & Associates
AHA Consulting Engineers
Matheson-Ball & Associates
dbHMS
W-T Engineering, Inc.
RTM Associates, Inc.
Mussett Nicholas
Vector Consulting
Global Engineering Solutions
Mendoza, Ribas, Farinas & Associates
CTA Architects & Engineers
L'Heureux, Page, Werner Engineering
Allied Consulting Engineers
Little & Associates
Professional Engineering
Saber Engineering
Petersen Engineering
Ashokan Water Services

Greeley, CO
Lakewood, CO
Lakewood, CO
Ft. Myers, FL
Fairfield, CT
Atlanta, GA
Atlanta, GA
Roswell, GA
Roswell, GA
Chicago, IL
Hoffman Estates, IL
South Barrington, IL
Indianapolis, IN
Indianapolis, IN
Rockville, MD
Rockville, MD
Billings, MT
Great Falls, MT
Charlotte, NC
Charlotte, NC
Charlotte, NC
Charlotte, NC
Rockingham, NH
Brooklyn, NY

Edward & Zuck Engineers
Lakhani & Jordan
Berardi & Partners
WD Partners
Lehigh Valley Engineering
Tim Aikman Architecture
Reynolds Consulting Engineers
Keystone Consulting & Associates
Maffett Loftis Engineering
Bedinger Consulting Engineers
Kelso-Regen Associates
CrossRoads Development Services
Smith Seckman & Reid
Black & Veatch
Blum Consulting Engineers
Geotting & Associates
Purdy McGuire Inc.
ID Studio 4
Brandt Engineering
Coppernoll Mechanical Design
Southport Engineering Systems
Shumann & Associates
Lubeon Gobster Dominiak
Thunderbird Engineering

New York, NY
New York, NY
Columbus, OH
Dublin, OH
Bethlehem, PA
Dalton, PA
Harrisburg, PA
Honesdale, PA
Cookville, TN
Knoxville, TN
Knoxville, TN
Mount Juliet, TN
Nashville, TN
Dallas, TX
Dallas, TX
Dallas, TX
Dallas, TX
Irving, TX
Richmond, VA
Ixonnia, WI
Kenosha, WI
La Crosse, WI
Mequon, WI
Milwaukee, WI

TAKE THE FIELD.

24110 South Peculiar Drive
Peculiar, Missouri 64078
P 1.800.821.3944
F 1.800.758.5950

