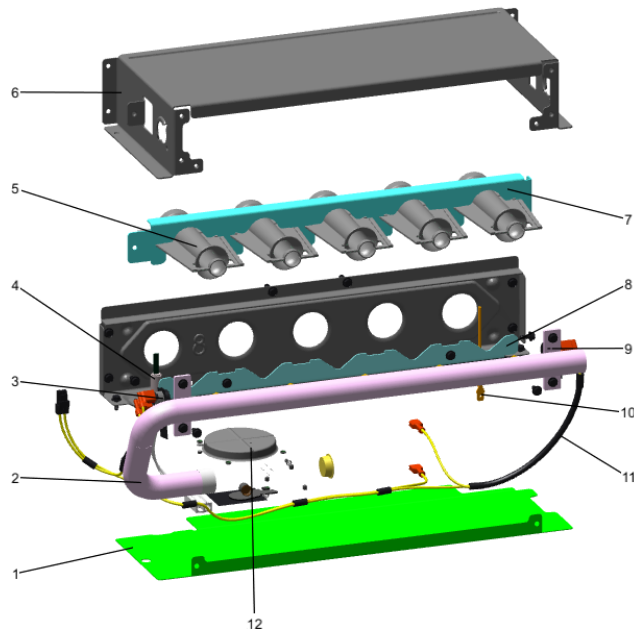


<b>Part No.</b>	<b>Reference No.</b>	<b>Quantity</b>	<b>Description</b>
0000104141~S	*		BLOWER
0000104142~S	*		BURNER & INDUCER
0000104145~S	*		CABINET
0000104144~S	*		CONTROLS
0000104140~S	*		GENERAL ASSEMBLY
0000104143~S	*		HEAT EXCHANGER
0000104146~S	*		MODEL NUMBER DESCRIPTION

Part No.	Reference No.	Quantity	Description
0000052627~P	*		BLOWER PARTS LIST

Part No.	Reference No.	Quantity	Description
BND00917		1	BAND; BELLY BAND ASSEMBLY, INCLUDES BAND, MOTOR LEGS, MOUNTING HARDWARE
SCR01011		3	SCREW; 1/4-20 C HXW 5/8 S N
SCR02624		4	SCREW; 8-18 X 7/8, TYPE AB, HEX CAP
BRK05035	1	2	BRACKET; BLOWER-OFFSET
WIR09218	2	1	WIRE; HARNESS, BLOWER, 12 PIN
SWT04157	3	1	SWITCH-REVERSE FLOW
WHL03718	4	1	WHEEL; BLOWER, 11.95 IN DIA, 11.93 IN WIDTH, 0.50 IN BORE, 54 BLADES, CW
SWT04156	5	1	SWITCH-REVERSE FLOW
MOT19955	6	1	MOTOR; CTM - 1 HP, PROGRAMMED
BND00917	6a	1	BAND; BELLY BAND ASSEMBLY, INCLUDES BAND, MOTOR LEGS, MOUNTING HARDWARE

Part No.	Reference No.	Quantity	Description
0000047668~P	*		BURNER ASSEMBLY

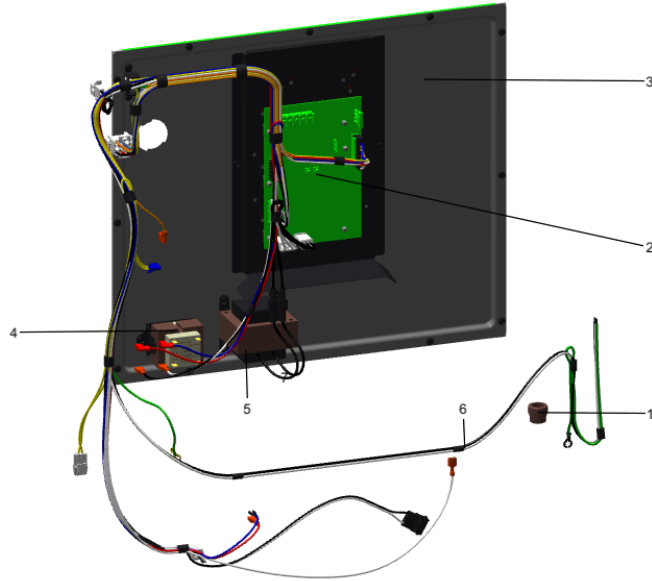


Part No.	Reference No.	Quantity	Description
BRK04580		1	BRACKET; IGNITER, 2.063 X 0.875 X 0.456
BRK04581		1	BRACKET; FLAME SENSOR, 2.063 X 0.875 X 0.456
CMP01468		1	CLAMP; BURNER-5
HLD00628		1	HOLDER; 5 BURNER, 14.875 X 1.531
ORF01427		5	ORIFICE; SPUD, DRILL #45, BRASS
PLT05661	1	1	PLATE; 5 BURNER, 15.33 X 5.61
MFD01445	2	1	MANIFOLD; 5
SWT04162	3	1	SWITCH-FLAME-ROLLOUT
IGN00152	4	1	MIN=12/12 IGNITER; SILICON-NITRIDE, 120V, INCLUDES BRACKET AND SCREWS
BNR01233	5	5	BURNER; 0.50 ID INSHOT BURNER, NATURAL GAS, STAINLESS STEEL, 2.75 X 4.50
BOX02754	6	1	BOX; BURNER, 5.74 X 15.33 X 2.63
SWT04163	9	1	SWITCH-FLAME-ROLLOUT
SEN02662	10	1	SENSOR; FLAME FOR NATURAL GAS AND LP, KANTHAL D
WIR09934	11	1	WIRE; HARNESS-BURN-5-6
VAL09029	12	1	VALVE; GAS, SLOW OPENING 1/2-14 NPT, 24V, 50/60 HZ, "J" SERIES

Part No.	Reference No.	Quantity	Description
0000052647~P	*		CABINET PARTS LIST

Part No.	Reference No.	Quantity	Description
WIR05160	1	1	WIRE; HARNESS, 2 PIN DF, 5 INCH BLACK WIRE
PNL37177	2	1	PANEL; BOTTOM, 20.92 X 21.08
BOX02750	3	2	BOX; ASSEMBLY, JUNCTION, INCLUDES TOP, BASE, SCREWS & BUSHING
PLU01267	4	2	PLUG; GAS CONDENSATE, 2.17 OD, 1.675 ID, BLACK PLASTIC
SUP05943	5	2	SUPPORT; SIDE, 33.74 X 1.07 X 1.07
PNL32371	6	1	PANEL; BOTTOM, 20.92 X 21.08
PLU01272	7	2	PLUG; GAS CONDENSATE, 1.5 INCH, BLACK PLASTIC
PLU01273	8	3	PLUG; ELECTRICAL, 1.0 INCH, BLACK PLASTIC
SUP06473	9	1	SUPPORT; CMEMBER-BOTTOM-80C
SCR00972	10	4	SCREW, 10-24 TR-3 HXW 3/8 S
PLU01268	11	3	PLUG; ELECTRICAL, 1.19 OD, 0.875 ID, BLACK PLASTIC
SUP06397	12	1	SUPPORT; CROSSMEMBER-80-C
VNE01869	13	2	VANE; GUIDE

Part No.	Reference No.	Quantity	Description
0000052628~P	*		CONTROLS PARTS LIST



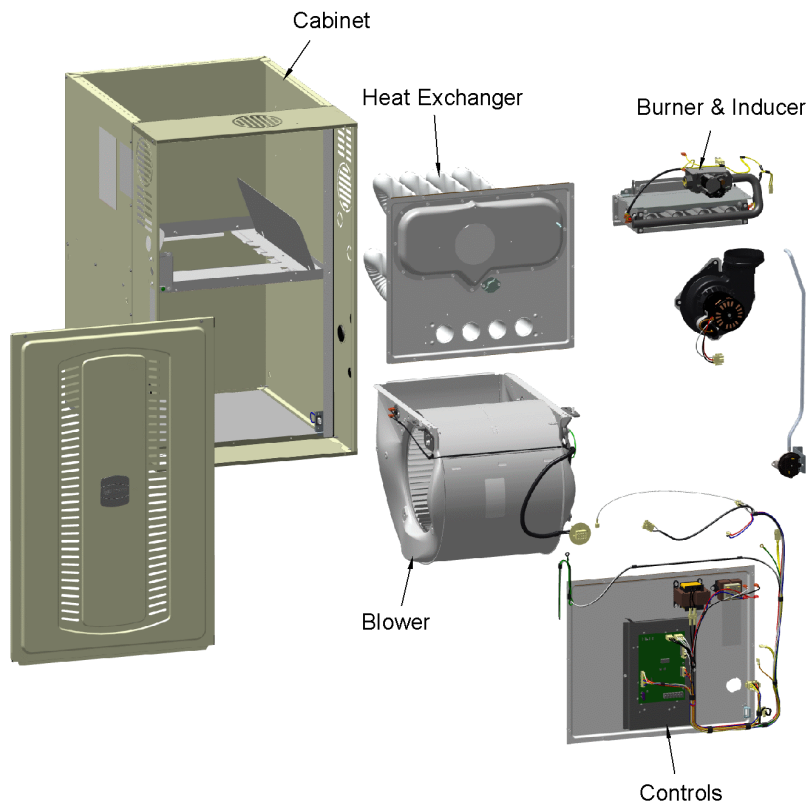
Part No.	Reference No.	Quantity	Description
GKT05000		2	GASKET; VESTIBULE GASKETS, ONE SIZE FITS ALL - TRIM TO FIT
GKT05169		2	GASKET; VEST-TOP-BOT-C-80 (2EA)
SHD00602		1	SHIELD; BRACKET-IFC, SHEET METAL, 5.91 X 9.03
BUS00300	1	1	BUSHING; STRAIN RELIEF
CNT07940	2	1	CONTROL; INTEGRATED FURNACE CONTROL; A801X
PNL37122	3	1	PANEL; VESTIBULE-BOTTOM, C CABINET, 19.59 X 16.75
TRR02736	4	1	TRANSFORMER; 115V-24V, 35VA, 60 HZ, CLASS 2
TRR02737	5	1	TRANSFORMER; CHOKE LINE, 12 AMPS RMS AC, 600V
WIR09220	6	1	WIRE; HARNESS, POWER & CONTROLS, CHOKE

Part No.	Reference No.	Quantity	Description
0000010416~P	*		GENERAL ASSEMBLY GRAPHIC

S-SERIES FURNACE 80%

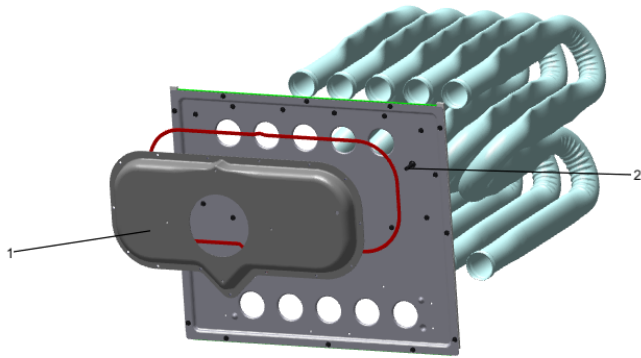
75013348

RP  
A



This is a typical illustration. The unit in the field may not appear exactly as shown.

Part No.	Reference No.	Quantity	Description
0000036612~P	*		HEAT EXCHANGER PARTS LIST



<b>Part No.</b>	<b>Reference No.</b>	<b>Quantity</b>	<b>Description</b>
EXC03223		1	EXCHANGER; C100 HX ASSY
GKT05000		2	GASKET; VESTIBULE GASKETS, ONE SIZE FITS ALL - TRIM TO FIT
GKT05169		2	GASKET; VEST-TOP-BOT-C-80 (2EA)
BOX03708	1	1	BOX; FLUE, INCLUDES TUB08301
TUB08301	2	1	TUBE; PRESSURE SWITCH, STAINLESS STEEL, .025 O.D. .035 WALL THK.

Part No.	Reference No.	Quantity	Description
000005337~P	*		MODEL NUMBER GRAPHIC

MODEL NUMBER DESCRIPTION

75011116

RB  
B

S-SERIES FURNACE

*Example Model Number:*

**S 9 V 2 B 0 8 0 U 3 P S A A A**  
1 - - - - 5 - - - - 10 - - - - 15

**Digit 1 – Level**

S = Series  
L = 14 ng/J Ultra-Low NOx

**Digit 2 – AFUE**

8 = 80%  
9 = 90% or higher

**Digit 3 – Blower Type**

B = Builder Series (May be PSC or CTM)  
P = PSC  
X = CTM  
V = Variable Speed

**Digit 4 – Gas Valve Stages**

1 = SingleStage  
2 = 2 Stage  
M = Modulating

**Digit 5 – Cabinet Width**

A = 14.5 wide  
B = 17.5 wide  
C = 21.0 wide  
D = 24.5 wide

**Digits 6,7,8 – BTU input**

080 = 80,000 BTUH

**Digit 9 – Poise Options**

U = 3 way  
D = Dedicated Downflow  
M = 4 Way Poise

**Digit 10 – Airflow Capacity for Cooling**

2 = 2 Tons  
3 = 3 Tons  
4 = 4 Tons  
5 = 5 Tons

**Digit 11 – Inducer Type**

P = PSC  
X = CTM  
V = Variable Speed

**Digit 12 – Communicating capability**

S = 24 Volt  
C = Communicating System Control  
T = 24 Volt, 40ng/J NOx  
D = Communicating System Control,  
40ng/J NOx

**Digit 13 – Major Design Change**

**Digit 14 – Minor Design Change**

**Digit 15 – Service Digit Change**

