



A CSW Industrials Company

PRODUCT DATA SHEET

EASYBEND®
Lineset Bender

Description

The quickest and easiest way to bend soft copper linesets. EasyBend is designed for use as an internal pipe bender to offer the installer fast, easy and “kink-free” bends in soft copper linesets. No more kinks when bending your linesets, no need for springs and heavy equipment. EasyBend is designed by Castel Engineering specifically for use as an internal pipe bender to offer the installer fast, easy and “kink-free” bends in soft copper linesets

Applications

For use on soft copper only.

Instructions for Use

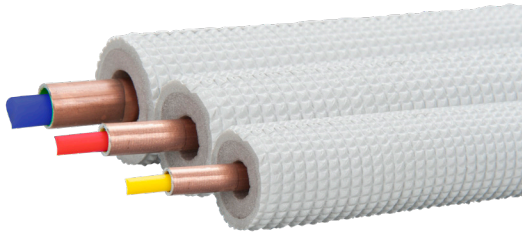
Read all directions, hazard and precautionary statements before using this product.

The EasyBend® mandrels have been designed to make one bend at a time. Make sure the mandrels are inserted at least 30 cm (12 inch) past the point you will start bending the linesets. For every tight bends, bend a little back open the bent lineset to ease the retraction of the EasyBend® mandrel(s).

When installing a complex lineset with many bends, twists or elbows, please respect following recommendations to reduce the cumulative drag on the mandrels and make it easier to withdraw them once all the bends have been done:

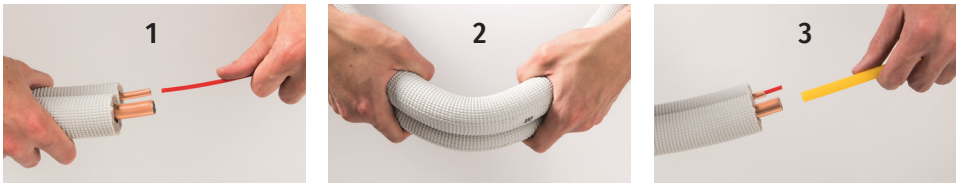
1. Insert the EasyBend mandrel(s) at least 30 cm (12 inch) past the point you will start bending your first bend, which should be furthest away from the condenser (outdoor unit).
2. Withdraw the mandrel(s) until the next bend, ensuring that again at least 30 cm (12 inch) remain *past the bending point of your next bend (namely *closer to the previous bend).
3. Repeat the process until you have made all bends, the last one being closest to the condenser (outdoor unit).

Ignoring above instructions may lead to difficulty in withdrawing the mandrels and could result in deforming them or breaking them off.



Characteristics | Features

- Hassle free- no need for springs or heavy & expensive equipment
- No more kinking
- Bends both lines simultaneously
- Easy retraction
- Very flexible
- No need to remove insulation
- Forms compound bends for tight spaces
- Doesn't damage insulation
- Reusable if clean with resealable straps
- 4 sizes for most minisplit/VRF applications
- For soft copper only
- Lets you reach high to make your first bend out of the wall



Packaging

Code	Size	Qty. per Case	Lbs. per Case	Cubic Ft per Case
84381	5/8", 1/2", 3/8", 1/4" kit	10	29	3.59
84382	5/8" & 1/2" kit	10	29	3.59
84383	3/4" kit	10	29	3.59

Specifications

Shelf Life 2 years

Suggestions and recommendations covering the use of our products are based on our past experience and laboratory findings. However, as we have no control as to the methods and conditions of application, we only assume responsibility for the uniformity of our products within manufacturing tolerances

Important Notes

1. Wipe Easybend mandrels off with a clean cloth before and after each use to prevent any foreign particles from finding their way into the lineset interior.
2. When preparing the mandrels for insertion into the lineset, DO NOT REST THEM ON THE GROUND as they could possibly become contaminated with dirt which could then be transferred to the lineset interior.
3. Before inserting the Easybend® mandrels, ream out the open end of linesets at the mandrels insertion point. This will prevent the plastic mandrels from scraping over any sharp edges during insertion and withdrawal and possibly leaving plastic shavings remaining inside the linesets.

When soft copper pipe is bent, it tends to flatten out slightly and becomes oval in shape, the tighter the bend, the greater the deformation and this will increase the friction inside the tubes when withdrawing the mandrel.

FOR CHEMICAL EMERGENCY, SPILL, LEAK, FIRE, EXPOSURE OR ACCIDENT, CALL CHEMTREC-DAY OR NIGHT 1-800-424-9300.

KEEP OUT OF REACH OF CHILDREN.

For additional information Call Toll Free 1-800-231-3345.

Castel's Limited Supplier Warranty

The goods are intended to be installed, inspected and maintained only by qualified Heating, Ventilation, Air-Conditioning or Refrigeration (hereafter HVAC-R) professionals.

HVAC-R professionals have professional knowledge about compliance with local regulations, safety factors, choice of installation location and product orientation, evaluation of the structure, composition and surface for products installation, adequate choice of fixing material (e.g. sealants, screws, etc) and procedures in respect with the known climatic conditions in use and during installation.

Goods are sold in conformity to Castel standards and are warranted to be faultless within the limits and tolerances of Castel manufacturing technology, with regards to raw materials or manufacturing and packing process-es.

Castel's warranty is valid for 12 months from Castel's date of invoice and is limited to providing replacement goods after Castel's determination of Product Failure.

All other damages, harm, and/or losses are completely beyond the scope of the warranty, which does not cover deterioration, failure in performance, damage, harm or loss resulting from accident, improper storage, unreasonable handling, misuse, transportation or maintenance, negligence, or in the event of war, strikes, riots, fire, epidemic, theft, embargoes or acts of civil or military authorities or Force Majeure.

Castel's 12 month warranty period is extendable on to Rectorseal's original customer with a maximum of another 12 months from the date Rectorseal invoices the customer. The total period of Castel warranty cannot be longer than 24 months from the date Castel has invoiced Rectorseal.

To benefit from the warranty, Products should be stored in their original closed packing, sheltered from climatic conditions, until sold to the HVAC-R professional.

Limited Warranty

RectorSeal, LLC makes the Limited Express Warranty that when the instructions for storage and handling of our products are followed we warrant our products to be free from defects. THIS LIMITED EXPRESS WARRANTY IS EXPRESSLY IN LIEU OF ANY OTHER EXPRESS OR IMPLIED WARRANTIES, INCLUDING ANY IMPLIED WARRANTY OF MERCHANTABILITY OR FITNESS FOR A PARTICULAR PURPOSE, AND OF ANY OTHER OBLIGATION ON THE PART OF RectorSeal, LLC. The sole remedy for breach of the Limited Express Warranty shall be the refund of the purchase price. All other liability is negated and disclaimed, and RectorSeal, LLC shall not be liable for incidental or consequential damages.

MADE IN BELGIUM

Manufactured by **Castel Engineering**

Distributed by **RectorSeal, LLC**

2601 Spenwick Drive • Houston, TX 77055, USA • 800-231-3345 • Fax 800-441-0051 • rectorseal.com

A CSW Industrials Company. RectorSeal, the logos and other trademarks are property of RectorSeal, LLC, its affiliates or its licensor's and are protected by copyright, trademark and other intellectual property laws, and may not be used without permission. RectorSeal reserves the right to change specifications without prior notice. ©2020 RectorSeal. All rights reserved. R50622-0620