



Description

The Ranco® RBV Series Ball Valves are designed for various commercial refrigeration and air conditioner systems, used to open and shut off the inner flow of the refrigerant. They can also be used as a service valve for vacuum pumping and refrigeration charging.

Features and Benefits

- Full port design for low pressure drop and energy consumption
- Welded body and seat construction enhances product reliability
- Rotate ¼ turn from full open to full close
- Bi-directional flow
- Explosion proof valve stem design
- High-performance seals prevent internal and external leakage

Applications

- Walk-in refrigerators
- Cold rooms
- Heat pumps
- Chillers

1 Year
Limited
Warranty



Robertshaw
RANCO • PARAGON • CASTFUTURA

Customer Service
+1 800 304 6563
HVACCustomerService
@robertshaw.com

Technical Service
+1 800 445 8299
TechnicalService
@robertshaw.com

www.robertshaw.com
©2025 Robertshaw
06/25 150-2976

Specifications

Applicable Refrigerants	R410A, R32, R134A, R404A, R507, R407C, and R22
Maximum Operating Pressure	700 PSI
Applicable Ambient Temperature	-40°F to 250°F
Relative Humidity	95%
Certifications	UL

Replacement Information

Robertshaw Part Number	Description	Connection	Ranco Part Numbers	Description
RBVS-014	1/4" w/ access valve	1/4	RBV-014	1/4" w/o access valve
RBVS-038	3/8" w/ access valve	3/8	RBV-038	3/8" w/o access valve
RBVS-012	1/2" w/ access valve	1/2	RBV-012	1/2" w/o access valve
RBVS-058	5/8" w/ access valve	5/8	RBV-058	5/8" w/o access valve
RBVS-034	3/4" w/ access valve	3/4	RBV-034	3/4" w/o access valve
RBVS-078	7/8" w/ access valve	7/8	RBV-078	7/8" w/o access valve
RBVS-118	1-1/8" w/ access valve	1 1/8	RBV-118	1-1/8" w/o access valve
RBVS-138	1-3/8" w/ access valve	1 3/8	RBV-138	1-3/8" w/o access valve
RBVS-158	1-5/8" w/ access valve	1 5/8	RBV-158	1-5/8" w/o access valve
RBVS-218	2-1/8" w/ access valve	2 1/8	RBV-218	2-1/8" w/o access valve
RBVS-258	2-5/8" w/ access valve	2 5/8	RBV-258	2-5/8" w/o access valve
RBVS-318	3-1/8" w/ access valve	3 1/8	RBV-318	3-1/8" w/o access valve

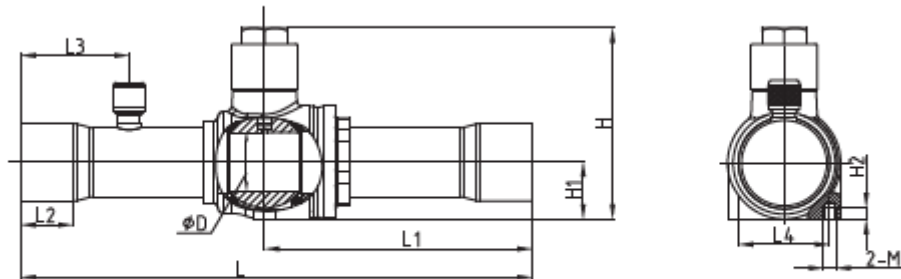
Product Dimensions

Product Dimensions with Access Valve	Product Dimensions with out Access Valve	D(mm)	D (in)	L(mm)	L (in)	L1(mm)	L1(in)	L2(mm)	L2(in)	L3(mm)	L3(in)	L4(mm)	L4(in)	H(mm)	H(in)
RBVS-014	RBV-014	10	0.39	155	6.10	83	3.39	8	0.31	30	1.18	16	0.64	52	2.047
RBVS-038	RBV-038	10	0.39	138.5	5.45	74.5	2.93	10	0.39	29	1.14	16	0.64	52	2.047
RBVS-012	RBV-012	10	0.39	138.5	5.45	74.5	2.93	10	0.39	29	1.14	16	0.64	52	2.047
RBVS-058	RBV-058	12.5	0.49	160	6.30	85	3.35	12.5	0.49	31	1.22	19	0.75	53	2.086
RBVS-034	RBV-034	15	0.59	160.5	6.32	84.5	3.33	17	0.67	34	1.34	23.5	0.93	55	2.165
RBVS-078	RBV-078	19	0.74	184.5	7.26	97	3.82	17	0.67	37	1.46	29.5	1.16	66	2.598
RBVS-118	RBV-118	24	0.94	208	8.19	109	4.29	22	0.87	44	1.73	37	1.46	78	3.07
RBVS-138	RBV-138	32	1.25	251	9.88	133	5.24	25	0.98	52	2.05	43	1.69	91.5	3.602
RBVS-158	RBV-158	38	1.49	280	11.02	146	5.75	28	1.10	57	2.24	58	2.28	105.5	4.153
RBVS-218	RBV-218	50	1.96	305	12.00	157.5	6.20	35	1.38	61	2.40	78	3.07	125	4.921
RBVS-258	RBV-258	63	2.48	343.5	13.52	177.5	6.99	37	1.46	72	2.83	89	3.50	146.5	5.767
RBVS-318	RBV-318	74	2.91	408	16.06	208	8.19	42	1.65	79	3.11	114	4.49	177	6.968

Product Dimensions Continued

H1(mm)	H1(in)	H2(mm)	H2(in)	Thread M
16.5	0.65	5	0.20	M5 X 0.8
16.5	0.65	5	0.20	M5 X 0.8
16.5	0.65	5	0.20	M5 X 0.8
16	0.63	5	0.20	M5 X 0.8
17	0.67	5	0.20	M5 X 0.8
19.5	0.77	5	0.20	M5 X 0.8
23	0.91	5	0.20	M5 X 0.8
30	1.18	5	0.20	M5 X 0.8
35	1.38	10	0.39	M6 X 1.0
45	1.77	10	0.39	M6 X 1.0
55	2.17	15	0.59	M6 X 1.0
67	2.64	15	0.59	M6 X 1.0

Product Drawings



Replacement Information

Ranco Part Numbers	Description	Competitor	Competitor Part Number	Competitor	Competitor Part Number	Competitor	Competitor Part Number	Competitor	Competitor Part Number
RBVS-014	1/4" w/ access valve	Diversitech	BV-2-S-T			Henry	937202	Danfoss	009L6581
RBVS-038	3/8" w/ access valve	Diversitech	BV-3-S-T	Sporlan	502205	Henry	937203	Danfoss	009L6582
RBVS-012	1/2" w/ access valve	Diversitech	BV-4-S-T	Sporlan	502206	Henry	937204	Danfoss	009L6585
RBVS-058	5/8" w/ access valve	Diversitech	BV-5-S-T	Sporlan	502207	Henry	937205	Danfoss	009L6586
RBVS-034	3/4" w/ access valve	Diversitech	BV-6-S-T	Sporlan	502208	Henry	937306	Danfoss	009L6588
RBVS-078	7/8" w/ access valve	Diversitech	BV-7-S-T	Sporlan	502209	Henry	937307	Danfoss	009L6589
RBVS-118	1-1/8" w/ access valve	Diversitech	BV-9-S-T	Sporlan	502210	Henry	937409	Danfoss	009L6451
RBVS-138	1/3/8" w/ access valve	Diversitech	BV-11-S-T			Henry	938511	Danfoss	009L6453
RBVS-158	1-5/8" w/ access valve	Diversitech	BV-13-S-T			Henry	938613	Danfoss	009L6454
RBVS-218	2-1/8" w/ access valve	Diversitech	BV-17-S-T			Henry	937617	Danfoss	009L6456
RBVS-258	2-5/8" w/ access valve	Diversitech	BV-21-S-T			Henry	937721		
RBVS-318	3-1/8" w/ access valve	Diversitech	BV-25-S-T			Henry	937725		
RBV-014	1/4" w/o access valve	Diversitech	BV-2-S			Henry	907202	Danfoss	009L6415
RBV-038	3/8" w/o access valve	Diversitech	BV-3-S	Sporlan	502199	Henry	907203	Danfoss	009L6416
RBV-012	1/2" w/o access valve	Diversitech	BV-4-S	Sporlan	502200	Henry	907204	Danfoss	009L6417
RBV-058	5/8" w/o access valve	Diversitech	BV-5-S	Sporlan	502201	Henry	907205	Danfoss	009L6418
RBV-034	3/4" w/o access valve	Diversitech	BV-6-S	Sporlan	502202	Henry	907306	Danfoss	009L6419
RBV-078	7/8" w/o access valve	Diversitech	BV-7-S	Sporlan	502203	Henry	907307	Danfoss	009L6420
RBV-118	1-1/8" w/o access valve	Diversitech	BV-9-S		502204	Henry	907409	Danfoss	009L6406
RBV-138	1/3/8" w/o access valve	Diversitech	BV-11-S			Henry	908511	Danfoss	009L6410
RBV-158	1-5/8" w/o access valve	Diversitech	BV-13-S			Henry	908613	Danfoss	009L6411
RBV-218	2-1/8" w/o access valve	Diversitech	BV-17-S			Henry	908617	Danfoss	009L6412
RBV-258	2-5/8" w/o access valve	Diversitech	BV-21-S			Henry	907721		
RBV-318	3-1/8" w/o access valve					Henry	907725		